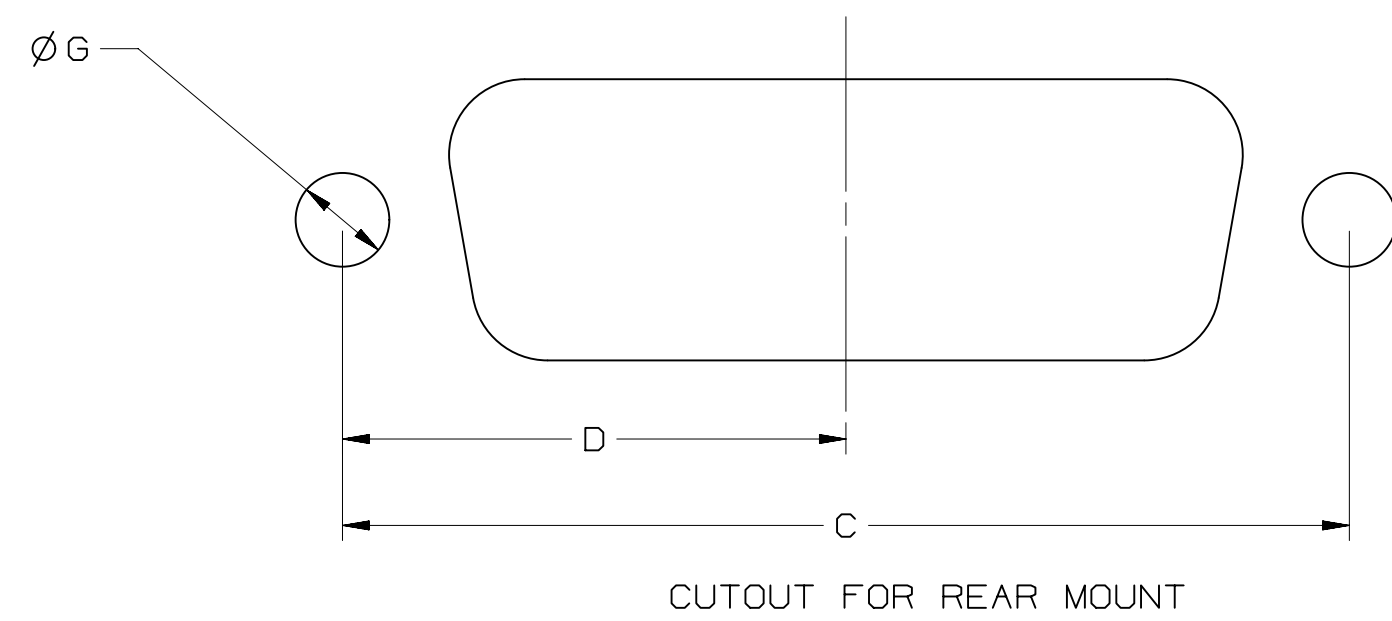
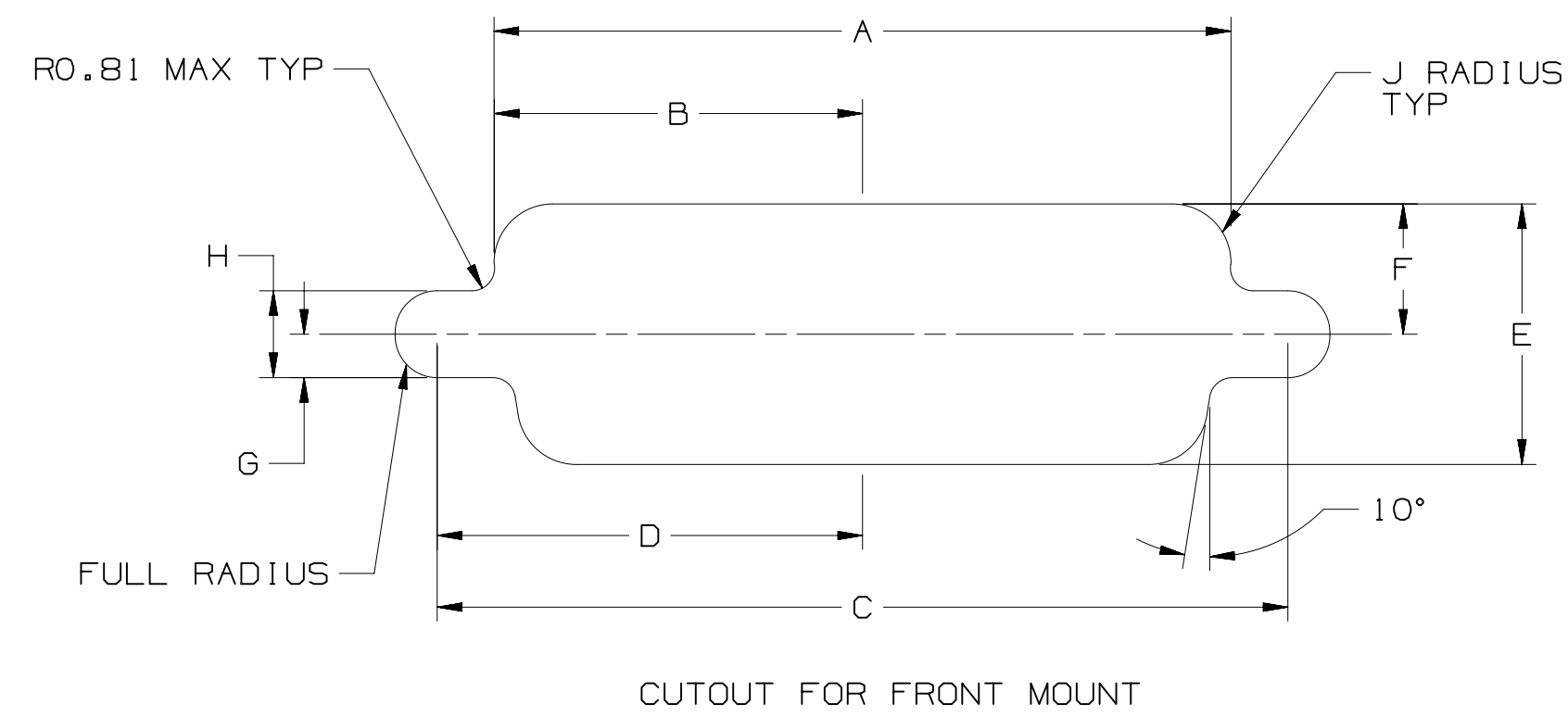


POSITION	MOUNTING METHOD	A	B	C	D	E	F	G	H	J
9	FRONT	.874(22.2)	.437(11.1)	.984(25.0)	.492(12.5)	.513(13.0)	.257(6.5)	.120(3.1)	.060(1.5)	.083(2.1)
	REAR	.806(20.5)	.403(10.2)	.984(25.0)	.492(12.5)	.449(11.4)	.225(5.7)	.120(3.1)	.060(1.5)	.132(3.4)
15	FRONT	1.202(30.5)	.601(15.3)	1.312(33.3)	.656(16.7)	.513(13.0)	.257(6.5)	.120(3.1)	.060(1.5)	.083(2.1)
	REAR	1.134(28.8)	.567(14.4)	1.312(33.3)	.656(16.7)	.449(11.4)	.225(5.7)	.120(3.1)	.060(1.5)	.132(3.4)
25	FRONT	1.743(44.3)	.872(22.2)	1.852(47.0)	.926(23.5)	.513(13.0)	.257(6.5)	.120(3.1)	.060(1.5)	.083(2.1)
	REAR	1.674(42.5)	.837(21.3)	1.852(47.0)	.926(23.5)	.449(11.4)	.225(5.7)	.120(3.1)	.060(1.5)	.132(3.4)
37	FRONT	2.391(60.7)	1.196(30.4)	2.500(63.5)	1.250(31.8)	.513(13.0)	.257(6.5)	.120(3.1)	.060(1.5)	.083(2.1)
	REAR	2.326(59.1)	1.163(29.5)	2.500(63.5)	1.250(31.8)	.449(11.4)	.225(5.7)	.120(3.1)	.060(1.5)	.132(3.4)
50	FRONT	2.297(58.3)	1.149(29.2)	2.406(61.1)	1.203(30.6)	.623(15.8)	.312(7.9)	.120(3.1)	.060(1.5)	.083(2.1)
	REAR	2.218(56.3)	1.109(28.2)	2.406(61.1)	1.203(30.6)	.555(14.1)	.278(7.1)	.120(3.1)	.060(1.5)	.132(3.4)



REV	ECO	ISSUE DATE AND DESCRIPTION	DRFT	CHKD
C	46292	MAR 28, 2013 CORRECT SHELL MATL	SJS	ARM
B	35416	AUG 29, 2011 CHANGE MOHMS TO mOHMS, UPDATE ROHS	SJS	ARM
A	34511	MAY 17, 2011 MAY 17, 2011	SJS	ARM

DESIGN REFERENCE	NEXT ASSEMBLY	REV	ECO	ISSUE DATE AND DESCRIPTION	DRFT	CHKD
		SJS		MAY 17, 2011		
		ARM		MAY 17, 2011		
DIVISION	DIVISION CODE	© 3M COPYR[IGHT] 2013 This document and the information it contains are 3M property and may not be reproduced or further distributed without 3M permission, or used or disclosed other than for 3M authorized purposes. All rights reserved.				
DO NOT SCALE DRAWING	SCALE 1/1	3M Center St. Paul, MN 55144				
THIRD ANGLE PROJECTION	TOLERANCES EXCEPT AS NOTED	TITILE 8PXX-X00X D-SUB SOLDER CUP PLUG TS-2357				
INTERPRET PER ASME Y14.5 - 1994	MILLIMETERS ± 1	CAGE NUMBER D78-5100-2357-1				
MAX SURFACE ROUGHNESS 125 / ALL SURFACES ✓ MARKED ONLY	INCHES .00 ± .000 ± .0000 ±	DRAWING NO. D78-5100-2357-1				
	MILLIMETERS 0 ± 1 .0 ± .5 .00 ± .05 .000 ± .005	MODEL BP				
	ANGLES ± 1°	REV. C				
		DET. <input type="checkbox"/> YES <input checked="" type="checkbox"/> NO				
		SHT 2 OF 2				

DRAWING NUMBER 78-5100-2357-1