

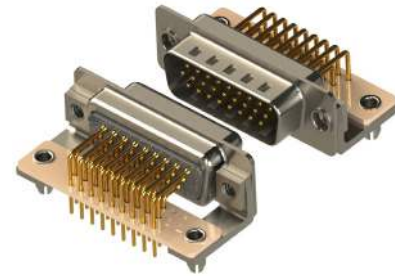
633M/634M SERIES



Machined D-Sub Connectors: Right Angle, High Density, 0.350" (8.89mm) Footprint

Features:

- High density three contact rows with 0.350"(8.89mm) footprint, right angle bend with machined contacts
- 0.090"(2.29mm) contact spacing, 0.078"(1.98mm) row spacing
- Plug and receptacle in 15, 26, 44 or 62 contact sizes
- Pin and socket contact mating design with P.C. tail termination
- Metal shell provides EMI/RFI shielding, plug shell indents provide grounding and additional mating retention
- Grounding features include brackets and four prong boardlock for exceptional retention to P.C. board
- Mounting options for panel mount or connector mating include through hole, threaded inserts and threaded standoffs
- D-shaped connector mating outline provides polarization



Specifications:

| | |
|---------------------------------|--|
| Insulator Material | PA9T, UL 94V-0, Color: Black or White (PA6T, UL 94V-0 for 62 Contacts) |
| Contact Material | Copper Alloy |
| Contact Plating | Gold Plating over Nickel All Over |
| Shell Material | Nickel Plated Steel |
| Current Rating | 5 amps |
| Contact Resistance | 10 Milliohms maximum |
| Dielectric Withstanding Voltage | 5000 megaohms minimum |
| Insulation Resistance | 1000 V AC rms at Sea Level |
| Operating Temperature | -55°C To +125°C |

Ordering Code:

634-M15-263-BN1

SERIES: _____
633: PLUG (PIN)
634: RECEPTACLE (SOCKET)

MACHINED CONTACTS _____

NO. OF CONTACTS: _____
15 - 15 CONTACTS 26 - 26 CONTACTS
44 - 44 CONTACTS 62 - 62 CONTACTS

CONTACT FINISH CODE: _____
2 - GOLD FLASH PLATING
3 - 15 MICROINCHES OF GOLD PLATING
6 - 30 MICROINCHES OF GOLD PLATING

CONTACT CODE: _____
63 - STANDARD CONTACT TAIL LENGTH(3.50 ±0.40)

MOUNTING & GROUNDING OPTIONS:

- 1 - Ø3.05 THRU HOLE
- 2 - 4-40 UNC INSERT
- 3 - 4-40 UNC INSERT + STABILIZER PCB + 4 PRONG BOARD LOCK
- 4 - 4-40 UNC INSERT + STABILIZER PCB + Ø3.20 DIA HOLE
- 5 - 4-40 UNC STANDOFF + STABILIZER PCB + 4 PRONG BOARD LOCK
- 6 - 4-40 UNC STANDOFF + STABILIZER PCB + Ø3.20 DIA HOLE

SHELL PLATING CODE:

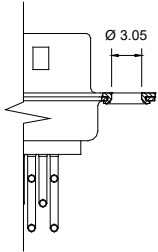
N - NICKEL
T - TIN

MATERIAL CODE:

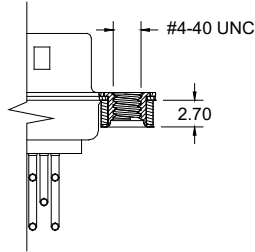
B - BLACK
W - WHITE

MOUNTING & GROUNDING OPTIONS

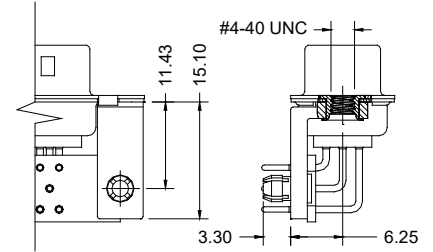
CODE - 1
THRU HOLE



CODE - 2
4-40 UNC INSERT

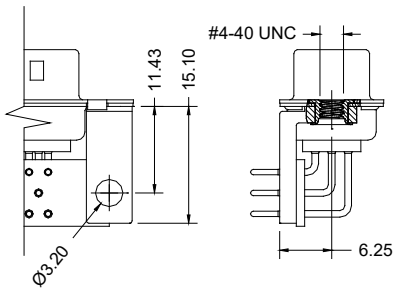


CODE - 3
4-40 UNC INSERT+PCB + BOARDLOCK



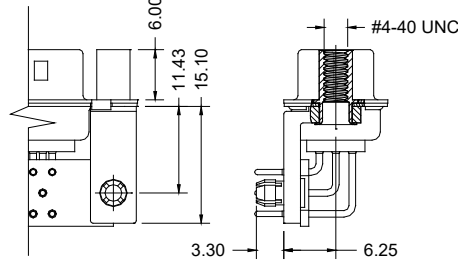
CODE - 4

4-40 UNC INSERT+PCB + THRU HOLE



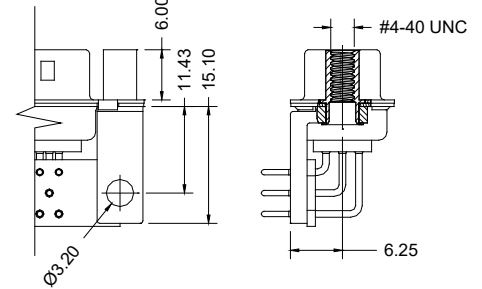
CODE - 5

4-40 UNC STANDOFF+PCB + BOARDLOCK

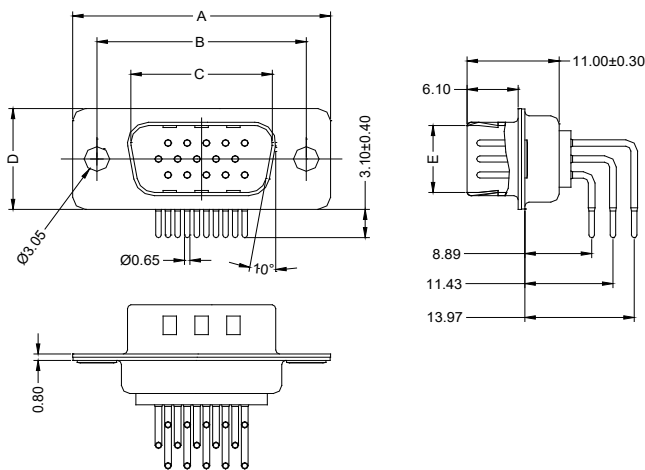


CODE - 6

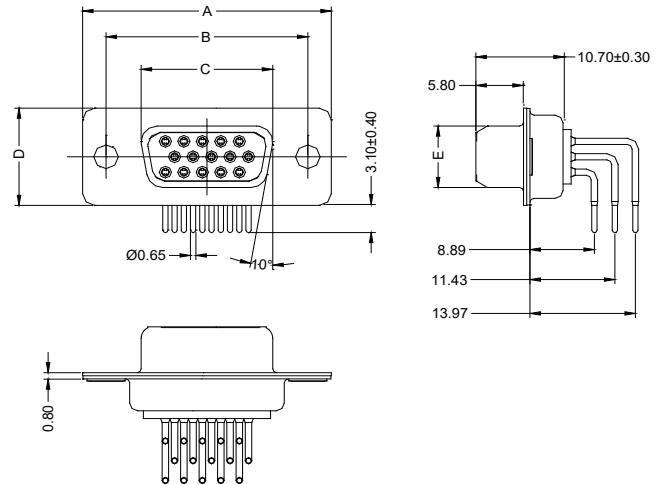
4-40 UNC STANDOFF+PCB + THRU HOLE



PLUG



RECEPTACLE



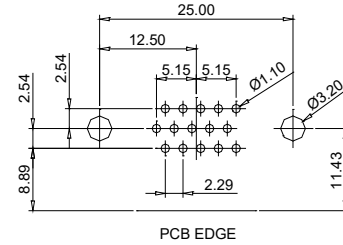
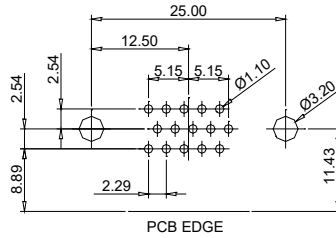
| No. of pos. | A | B | C | D | E |
|-------------|-------|-------|-------|-------|------|
| 15 | 30.80 | 25.00 | 16.90 | 12.50 | 8.30 |
| 26 | 39.20 | 33.30 | 25.25 | 12.50 | 8.30 |
| 44 | 53.05 | 47.05 | 38.95 | 12.50 | 8.30 |
| 62 | 69.40 | 63.50 | 55.40 | 12.50 | 8.30 |

| No. of pos. | A | B | C | D | E |
|-------------|-------|-------|-------|-------|------|
| 15 | 30.80 | 25.00 | 16.30 | 12.50 | 7.90 |
| 26 | 39.20 | 33.30 | 24.60 | 12.50 | 7.90 |
| 44 | 53.05 | 47.05 | 38.40 | 12.50 | 7.90 |
| 62 | 69.40 | 63.50 | 54.80 | 12.50 | 7.90 |

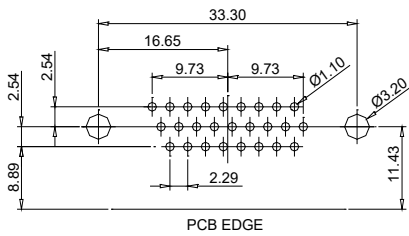
PCB LAYOUT FOR RECEPTACLE

PCB LAYOUT FOR PLUG

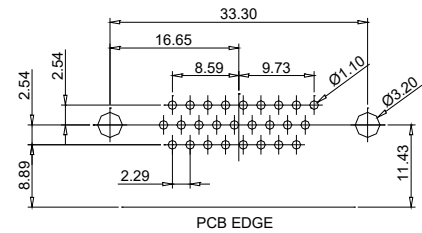
15 Pos



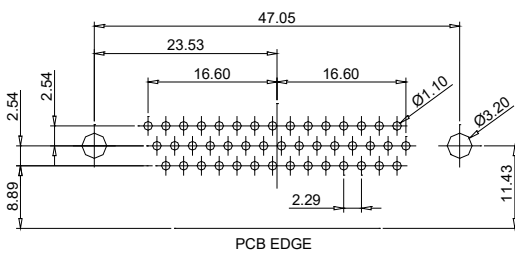
26 Pos



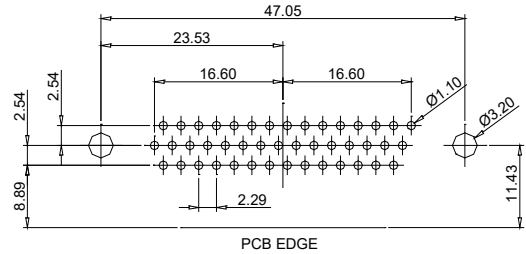
26 Pos



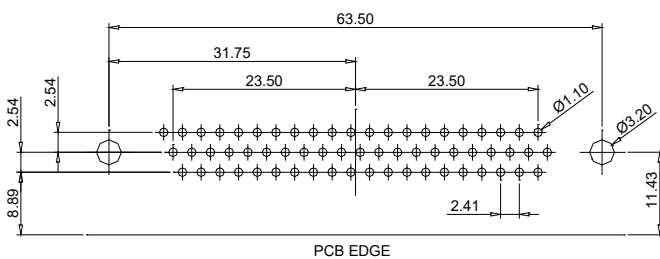
44 Pos



44 Pos



62 Pos



62 Pos

