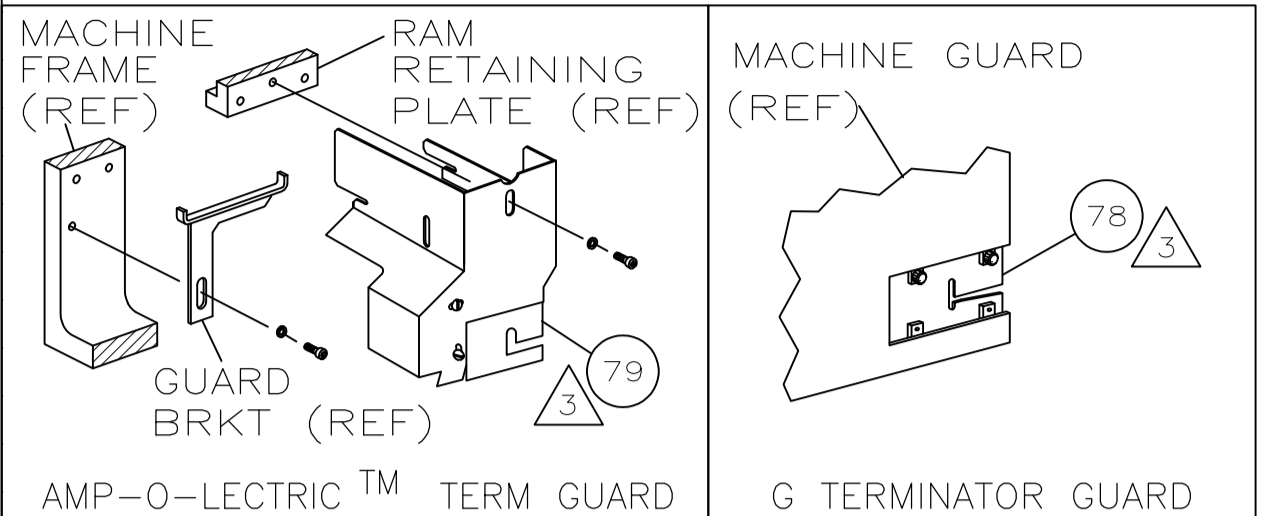


PART NUMBER	REV	FIRST USED
466789-3	J	-

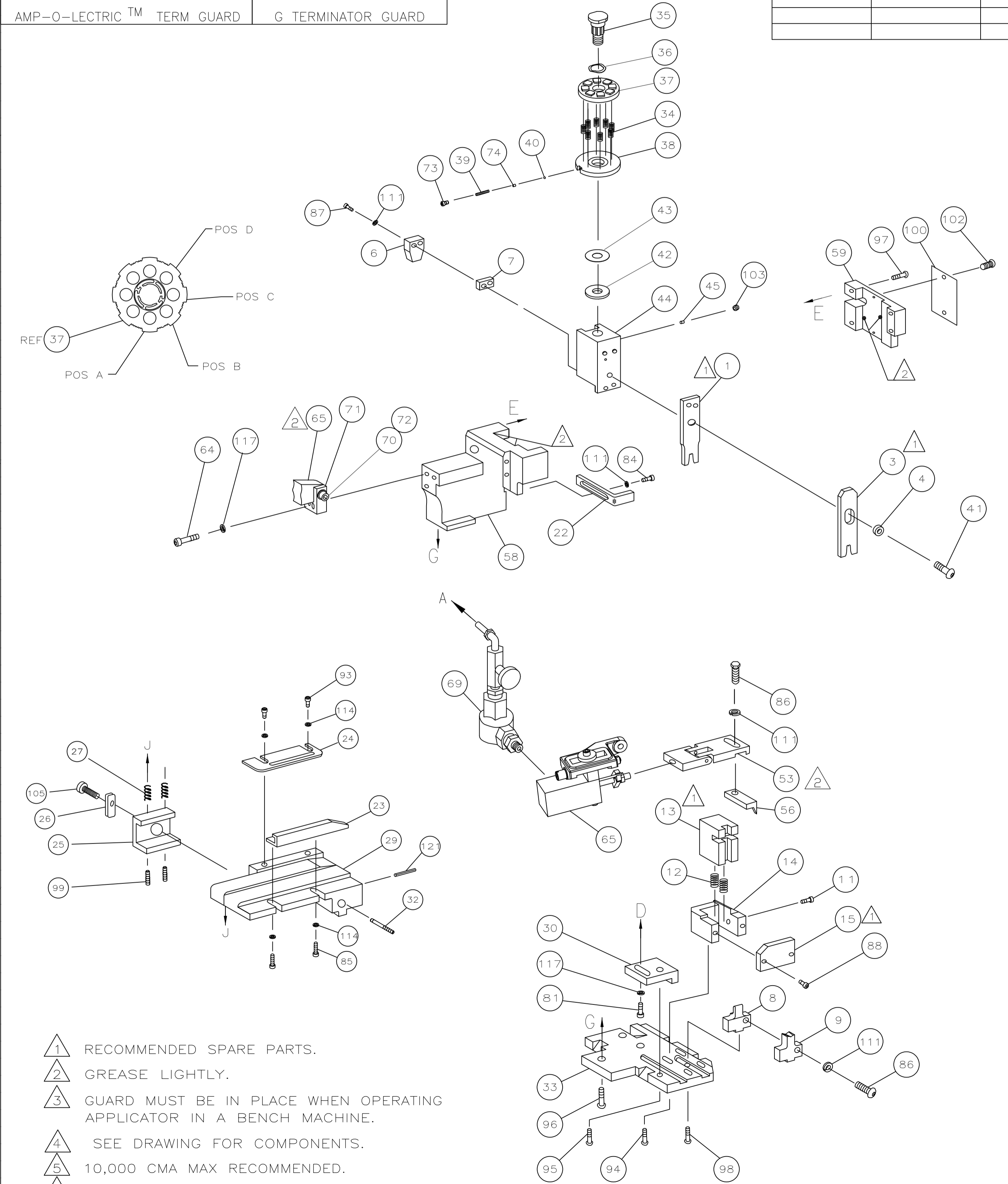


TERMINAL NAME: -

P.G. FASTON		P.G. FASTON		PIDG	
RING	SPADE	640932	640773	RING	SPADE
640814	640864	640942	640773	640773	640782
640815	640825	640944	640774	640774	640783
640816	640826	640948	640775	640775	640784
640817	640827	640956	640776	640776	640785
640818	640827	640958	640777	640777	640786
640819	640828	640960	640778	640778	640787
640820	640829		640779	640779	640788
640821	640830		640780	640780	640789
640822	640831		640781	640781	640790
640823	640832				640791
	640833				640792
	640834				640793
	640835				

TYCO TERMINAL		TYCO CRIMP SPECS	
PAD LTR	CRIMP HEIGHT	WIRE SIZE	
A	.093±.002	16-14	
B	NOT	USED	
C	NOT	USED	
D	NOT	USED	
CRIMP	SIZE	TYPE	RANGE
WIRE	.222	-	16-14
INSUL	.272	-	.160 MAX
FEED	.450-.800	APPL INSTRUCTION	SET UP GAGE
WIRE STRIP LENGTH	-	AI-8063	458637-1
		TERM APPL SPEC	L1043
			114-1002

LOC	DIST	REVISIONS			
F	LTR	DESCRIPTION	DATE	DWN	APVO
A	66	J1 ECR-10-004830	04MAR2010	YY	TE



- 1 RECOMMENDED SPARE PARTS.
- 2 GREASE LIGHTLY.
- 3 GUARD MUST BE IN PLACE WHEN OPERATING APPLICATOR IN A BENCH MACHINE.
- 4 SEE DRAWING FOR COMPONENTS.
- 5 10,000 CMA MAX RECOMMENDED.
- 6 USE  $\phi$ .19 50/50 SOLDER TO CHECK CRIMP HT.

QTY REQD	U/M	PART NO	DESCRIPTION	ITEM NO
1	-	4-21028-0	PIN,SLT SPR( $\phi$ .093x.75)ST GDE PL	121
3	-	21024-5	WASHER, LOCK(#10)ADJ BLOCK	117
4	-	21024-2	WASHER,LOCK(#4)FRONT STP GUIDE	114
4	-	21024-4	WASHER,LOCK(#8)STRIPPER	111
1	-	22353-8	SCR,SHLD,SLOT HEAD(8-32)	105
1	-	21009-2	SCR,SKT SET(1/4-20x.25 LW)RAM	103
2	-	21017-2	SCR,DRIVE(#2x.19)ID PLATE	102
1	-	461264-1	PLATE, IDENTIFICATION	100
2	-	5-21006-6	SCR,SET(10-32x.88)DRAG	99
1	-	22733-8	SCR,BHC(8-32x.38 LW)ANVIL	98
4	-	2-21002-9	SCR,BHC(10-32x.75)CAP	97
3	-	2-22733-8	SCR,BHC(1/4-20x.62)HSG	96
1	-	2-21002-7	SCR,BHC(10-32x.50)SG ADJ BLK	95
2	-	2-21002-2	SCR,BHC(8-32x.50)TERM H DWN	94
4	-	1-21000-4	SCR,SHC(4-40x.38)R STP GDE	93
1	-	2-21000-8	SCR,BHC(8-32x.62)R SHEAR PLATE	88
2	-	3-21000-1	SCR,SHC(8-32x1.00)DEP-HOLD	87
1	-	2-21000-6	SCR,HEX HD(8-32x.38)FEED FINGER	86
1	-	2-21000-7	SCR,SHC(8-32x.50)STRIPPER	84
1	-	3-21000-4	SCR,SHC(10-32x.38)SG ADJ BL	81
REF	-	462992-2	GUARD ASSY	78
1	-	690603-1	SPRING, ASSIST	74
1	-	23030-1	SCR,SHC(6-32x.25 SL)INS DISC	73
1	-	3-21001-5	SCR,SHC(3/8-16x1.00)AIR FEED	72
1	-	459610-1	MOUNT, FEED BRACKET	71
-3	U/M			

QTY REQD	U/M	PART NO	DESCRIPTION	ITEM NO
1	-	21024-8	WASHER, LOCK 3/8	70
1	-	692655-7	AIR FEED VALVE ASSY	69
1	-	461065-1	AIR FEED ASSY	65
2	-	3-21000-9	SCR,SHC(10-32x1.00)AIR ASSY	64
1	-	454220-1	CAP, RAM	59
1	-	454485-1	HOUSING	58
1	-	1-694433-5	PAWL, FEED	56
1	-	461062-1	FEED FINGER ASSY	53
1	-	690191-1	PLUG, NYLON	45
1	-	455673-1	RAM	44
1	-	690125-1	WASHER, LAMINATED	43
1	-	690124-1	WASHER, RAM	42
1	-	7-21002-9	BOLT, CRIMPER(5/16x1.00)	41
1	-	23241-6	BALL, STEEL	40
1	-	690170-1	SPRING, COMPRESSION	39
1	-	690142-1	DISC, INSULATION	38
1	-	459663-4	WIRE DISC	37
1	-	22480-5	WASHER, SPRING	36
1	-	690212-1	POST, RAM	35
8	-	2-22280-5	SPRING, COMPRESSION	34
1	-	455675-3	PLATE, BASE	33
1	-	690432-3	SCREW, ADJUSTMENT	32
1	-	455689-1	BLOCK, STRIP GUIDE ADJ	30
1	-	684045-1	PLATE, STRIP GUIDE	29
2	-	1-22284-0	SPRING, DRAG	27
1	-	240793-4	LEVER, DRAG RELEASE	26
1	-	240792-6	DRAG, STOCK	25
1	-	690438-4	GUIDE, STRIP (REAR)	24
1	-	684042-1	GUIDE, STRIP (FRONT)	23
1	-	690472-2	STRIPPER	19
1	-	463460-1	HOLDER, TERMINAL	18
1	-	690464-9	PLATE, SHEAR (REAR)	15
1	-	690462-7	HOLDER, SHEAR (REAR)	14
1	-	469542-1	SHEAR, FLOAT (REAR)	13
1	-	5-22280-0	SPRING, SHEAR	12
1	-	690461-2	STOP, SHEAR	11
1	-	1-454766-0	ANVIL, INSULATION	9
1	-	467660-2	ANVIL, WIRE	8
1	-	1-240641-8	SPACER, DEPRESSOR (REAR)	7
1	-	690468-6	DEPRESSOR, SHEAR (REAR)	6
1	-	238009-1	SPACER, BLOCK CRIMPER	4
1	-	1-454765-2	CRIMPER, INSULATION	3
1	-	467661-2	CRIMPER, WIRE	1

THIS DRAWING IS A CONTROLLED DOCUMENT.

DIMENSIONS: INCHES	TOLERANCES UNLESS OTHERWISE SPECIFIED:	0 PLC ± .005	1 PLC ± .005	2 PLC ± .005	3 PLC ± .005	4 PLC ± .005	ANGLES ± .005
MATERIAL	FINISH	WEIGHT	SIZE	CAGE CODE	DRAWING NO	RESTRICTED TO	
			A1	00779	466789-3		

APPROVED: M. YOUNGER, G. RAILLY, J. ELBIN

TYCO ELECTRONICS CORPORATION, Harrisburg, PA 17105-3608

MINIATURE QUICK CHANGE APPLICATOR SIDE FEED (COMMON CRIMP PIDG & PG 16-14)

CUSTOMER DRAWING, SCALE, SHEET 1 OF 1, REV J1