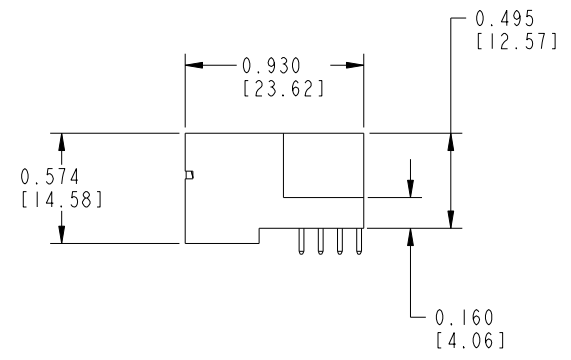
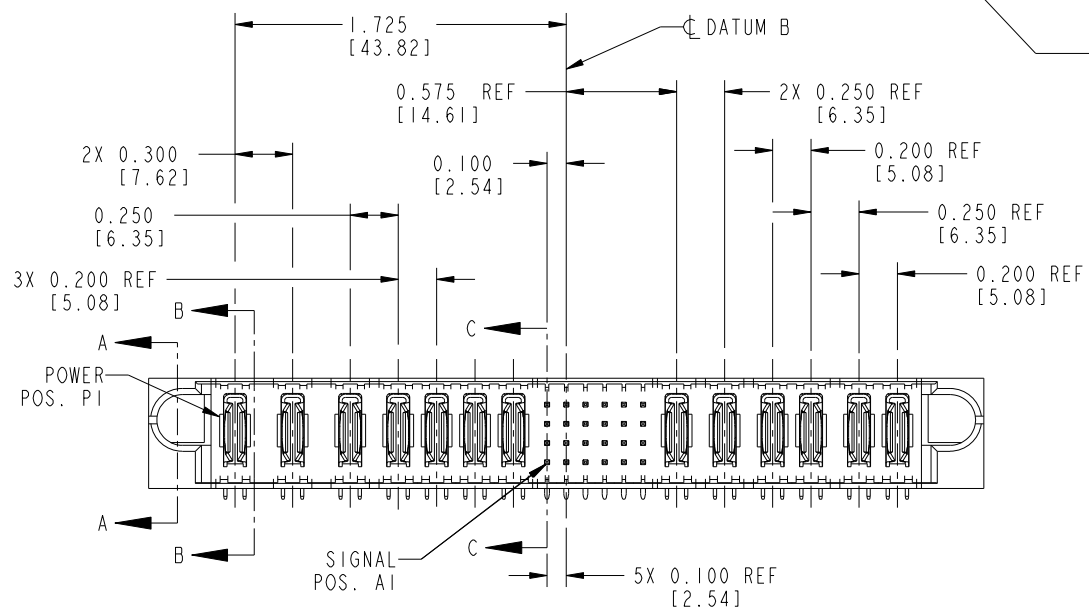
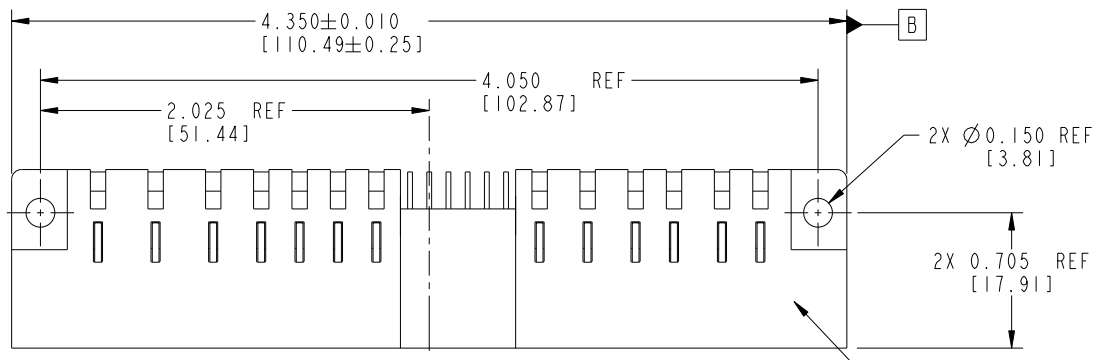


Tous droits strictement réservés. Reproduction ou communication a des tiers interdite sous quelque forme que ce soit sans autorisation écrite du propriétaire. Propriété de c FCI. Droits de reproduction FCI.



All rights strictly reserved. Reproduction or issue to third parties in any form whatever is not permitted without written authority from the proprietor. Property of FCI. Copyright FCI.

PRODUCT NUMBER
51792-001--
NOTE: ③



mat'l code		NOTE 2		tolerances unless otherwise specified		CUSTOMER		FCI	
lir	ecn no.	dr	date	linear	.XX±.01/.X±.3	COPY		www.fciconnect.com	
G	DG08-0251	W D	09/16/08	angles	.XXX±.005/.X±.13	projection		title 3ACP + 4P + 24S + 6P	
					.XXX±.0020/.XXX±.051	INCH/MM		RIGHT ANGLE SOLDER HEADER	
				dr	0°±2°	scale		product family PwrBlade code	
				engr	E. KORFF 05-05-00	1:1		size 213	
				chr	J. BROWN TODAY'S DATE			sheet 1 of 5	
				appd	J. BROWN 05-05-00			51792	
sheet index	revision sheet	G	G	G	G				
		1	2	3	4				

A

A

B

B

1 | 2

3 |

4

1 | 2

Pro/E

PDM: Rev:G

STATUS: Released

Printed: Dec 20, 2010

cage code 22536

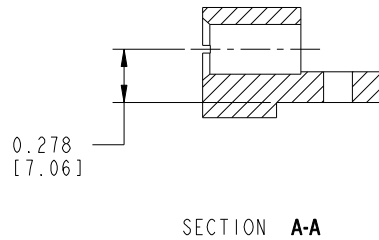
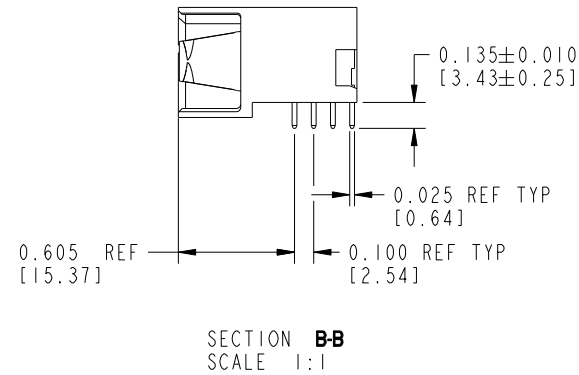
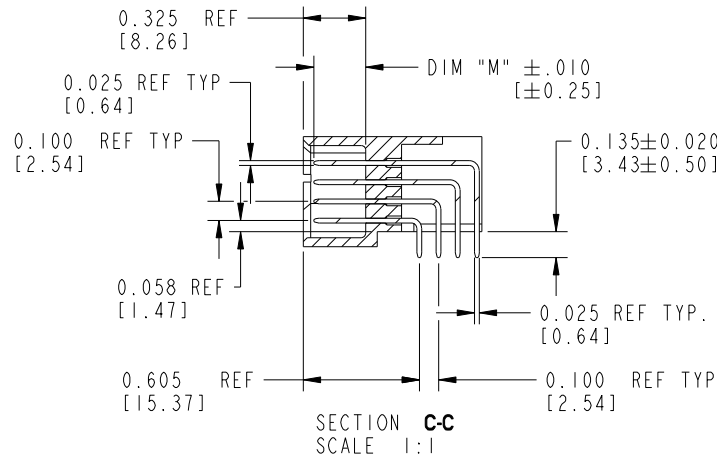
4

Tous droits strictement réservés. Reproduction ou communication a des tiers interdite sous quelque forme que ce soit sans autorisation écrite du propriétaire. Propriété de c FCI. Droits de reproduction FCI.



All rights strictly reserved. Reproduction or issue to third parties in any form whatever is not permitted without written authority from the proprietor. Property of FCI. Copyright FCI.

PRODUCT NUMBER
51792-001--
NOTE: (3)



mat'l code		NOTE 2		tolerances unless otherwise specified		CUSTOMER		 www.fciconnect.com	
ltr	ecn no.	dr	date	linear	.XX±.01/.X±.3	COPY		title 3ACP + 4P + 24S + 6P	
G					.XXX±.005/.X±.13	projection		RIGHT ANGLE SOLDER HEADER	
				angles	.XXX±.0020/.XXX±.051	 INCH/MM		product family PwrBlade code 213	
				dr	0°±2°	scale		size dwg no 51792 sheet 2 of 5	
				engr	E. KORFF 05-05-00	1:1			
				chr	J. BROWN TODAY'S DATE				
				appd	J. BROWN 05-05-00				
sheet index	revision sheet								

Pro/E

PDM: Rev:G

STAT: Released

Printed: Dec 20, 2010

Tous droits strictement réservés. Reproduction ou communication a des tiers interdite sous quelque forme que ce soit sans autorisation écrite du propriétaire. Propriété de c FCI. Droits de reproduction FCI.



All rights strictly reserved. Reproduction or issue to third parties in any form whatever is not permitted without written authority from the proprietor. Property of FCI. Copyright FCI.

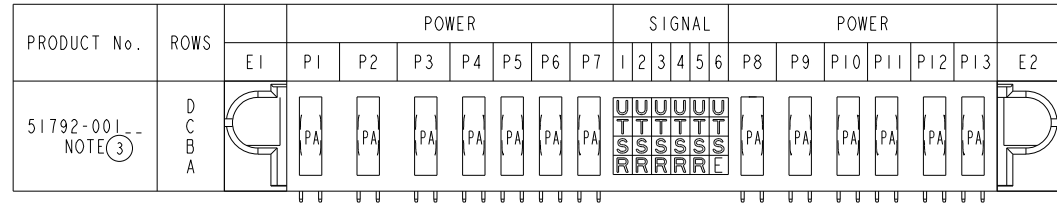
1 | 2

3 |

4

PRODUCT NUMBER
51792-001--
NOTE: (3)

CODE	DIM "M" MATING LENGTH		CONTACT TYPE
PA	N/A	[N/A]	POWER
R	0.270	[6.86]	SIGNAL
S	0.270	[6.86]	SIGNAL
T	0.270	[6.86]	SIGNAL
U	0.270	[6.86]	SIGNAL
E	0.220	[5.59]	SIGNAL



A

A

B

B

1 | 2

Pro/E

PDM: Rev:G

STAT: Released

Printed: Dec 20, 2010

mat'l code		NOTE 2		tolerances unless otherwise specified		CUSTOMER		 www.fciconnect.com	
ltr	ecn no.	dr	date	linear	.XX±.01/.X±.3	COPY		title 3ACP + 4P + 24S + 6P	
G				projection	.XXX±.005/.X±.13			RIGHT ANGLE SOLDER HEADER	
				angles	.XXX±.0020/.XXX±.051			product family PwrBlade code 213	
				dr	0°±2°	scale 1:1		size A 51792 sheet 3 of 5	
				enrg	E. KORFF 05-05-00				
				chr	J. BROWN TODAY'S DATE				
				appd	J. BROWN 05-05-00				
sheet index	revision sheet								

cage code 2856

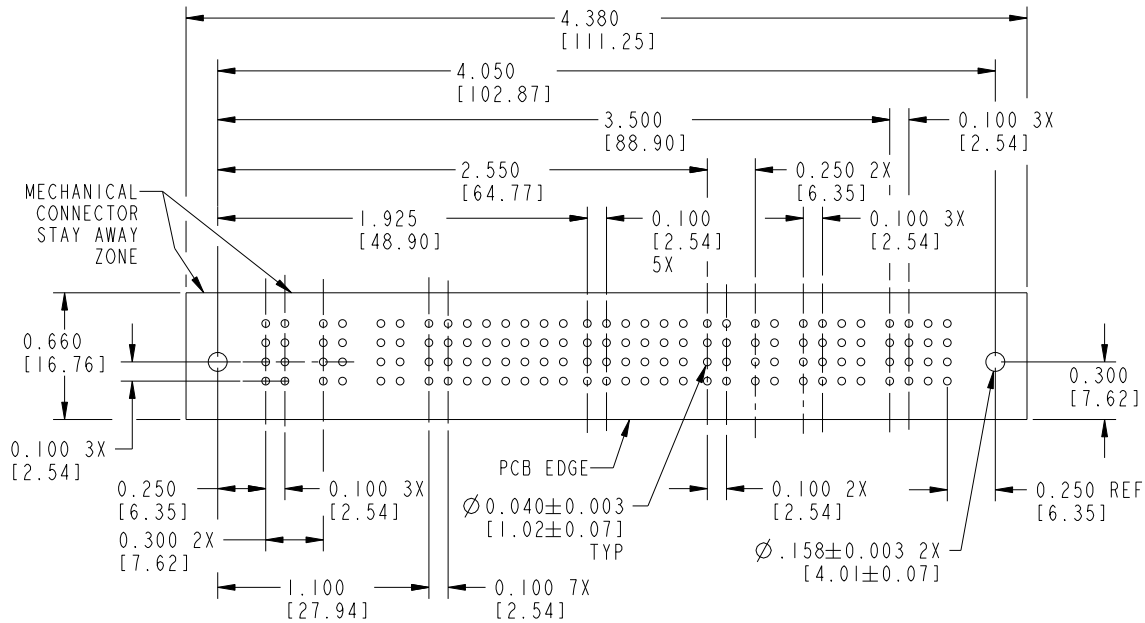
Tous droits strictement réservés. Reproduction ou communication a des tiers interdite sous quelque forme que ce soit sans autorisation écrite du propriétaire. Propriété de c FCI. Droits de reproduction FCI.



All rights strictly reserved. Reproduction or issue to third parties in any form whatever is not permitted without written authority from the proprietor. Property of FCI. Copyright FCI.

PRODUCT NUMBER

51792-001--
NOTE: ③

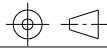


RECOMMENDED PCB LAYOUT

mat'l code		NOTE 2		tolerances unless otherwise specified		CUSTOMER		FCI	
ltr	ecn no.	dr	date	linear	.XX±.01/0.X±0.3	COPY		www.fciconnect.com	
G				angles	.XXX±.005/0.XX±0.13 .XXX±.0020/0.XXX±.051	projection		title 3ACP + 4P + 24S + 6P RIGHT ANGLE SOLDER HEADER	
				dr	0°±2°	INCH/MM		product family PwrBlade code 213	
				enr	E. KORFF 05-05-00	scale		size A dwg no 51792 sheet 4 of 5	
				chr	J. BROWN TODAY'S DATE 05-05-00	1:1			
				appd	J. BROWN 05-05-00				
sheet index	revision sheet								



projection



INCH/MM

scale

1:1

product family PwrBlade code 213
size A dwg no 51792 sheet 4 of 5

cage code 22526

PRODUCT NUMBER

51792-001--
NOTE: ③

NOTES:

1. DIMENSIONS AND TOLERANCES ARE IN ACCORDANCE WITH ASME Y14.5M, 1994 UNLESS OTHERWISE SPECIFIED.

CONNECTOR NOTES:

2. HOUSING MATERIAL: UL 94 V-0 GLASS FILLED HIGH-TEMP THERMOPLASTIC
POWER CONTACT MATERIAL: COPPER ALLOY
SIGNAL PIN MATERIAL: COPPER ALLOY

⚠ 3. SEE ITEM 1 & 2 IN PRINT 10064183 FOR PLATING SPEC OF 51792-001 AND 51792-001LF RESPECTIVELY.

4. MANUFACTURER'S NAME, P/N, AND DATE CODE TO APPEAR ON THIS SURFACE.

5. PRODUCT SPECIFICATION GS-12-149.
APPLICATION SPECIFICATION BUS-20-067.

PCB NOTES:

6. ALL HOLE DIAMETERS ARE FINISHED HOLE SIZE.

7. MOUNTING HOLES, WHERE APPLICABLE, ARE UNPLATED.

8. $\varnothing .0453 \pm 0.0010$ [1.151 \pm 0.025] DRILLED HOLES PLATED WITH
.0003 [0.008] MIN SnPb OVER .001 [0.03]
TO .003 [0.08] Cu PLATING TO ACHIEVE
 $\varnothing .040 \pm .003$ [1.02 \pm .07] HOLE.

9. "DIM XXX" TO BE DETERMINED BY THE CUSTOMER.

10. CONNECTOR KEEP-OUT ZONE.

11. ⚠ SYMBOL WILL BE NEXT TO ANY DIMENSION, VIEW, OR NOTE WHICH HAS BEEN MODIFIED WITH THE CURRENT DRAWING REVISION.

mat'l code		NOTE 2		tolerances unless otherwise specified		CUSTOMER		FCI		
ltr	ecn no.	dr	date	linear	.XX±.01/0.X±0.3		COPY		www.fciconnect.com	
G					.XXX±.005/0.XX±0.13		projection		title 3ACP + 4P + 24S + 6P	
					.XXX±.0020/0.XXX±.051				RIGHT ANGLE SOLDER HEADER	
				angles	0°±2°		INCH/MM		product family PwrBlade code 213	
				dr	E. KORFF	05-05-00	scale		size A 51792 sheet 5 of 5	
				engr	J. BROWN	TODAY'S DATE	1:1			
				chr	J. BROWN	05-05-00				
				appd	J. BROWN	05-05-00				
sheet index	revision sheet									

Tous droits strictement réservés. Reproduction ou communication a des tiers interdite sous quelque forme que ce soit sans autorisation écrite du propriétaire. Propriété de c FCI. Droits de reproduction FCI.



All rights strictly reserved. Reproduction or issue to third parties in any form whatever is not permitted without written authority from the proprietor. Property of FCI. Copyright FCI.