

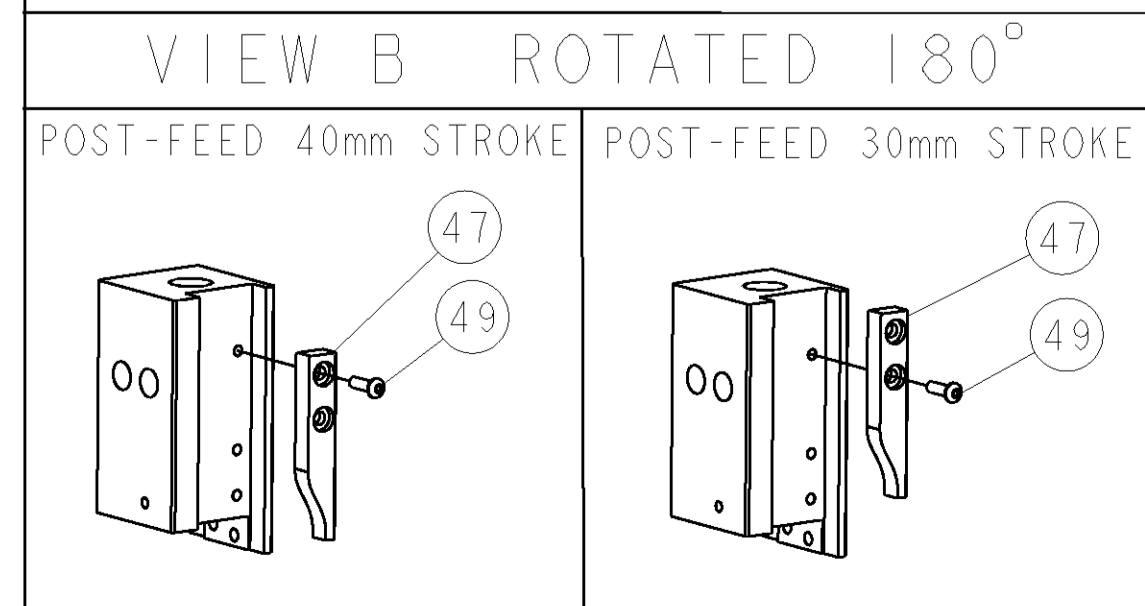
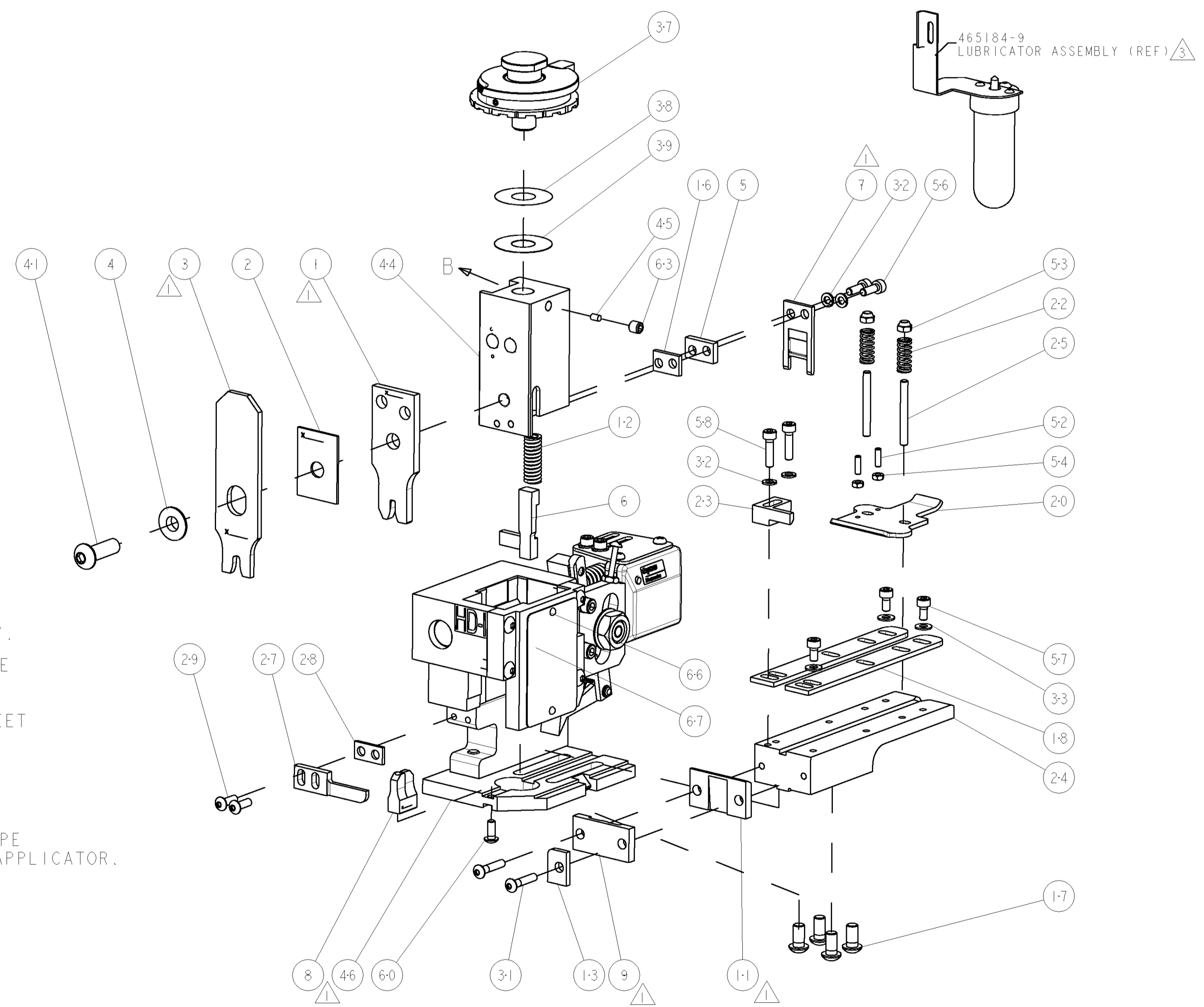
PART NUMBER	REV	TERMINATOR	FEED TYPE	DESCRIPTION
1529273-1	A	BENCH & LEADMAKER	MECH POST FEED	HDI APPLICATOR
7-1529273-1	A	BENCH & LEADMAKER	MECH POST FEED	-1 AND SPARE PARTS
7-1529273-7	A	-	-	SPARE PARTS KIT

SET UP GAGE		REVISIONS			
LOC	DIST	REV	DATE	BY	APPV
A	66	A	30MAY2008	MB	MC

CRIMP DATA	TE TERMINAL	TE CRIMP SPECS
TERMINAL NAME: -		
CRIMP	SIZE	TYPE
WIRE	2.79 [1.10 IN]	F
INSUL	4.57 [1.80 IN]	OV ⁵
WIRE STRIP LENGTH		APPL INSTRUCTIONS
4.80-5.60 [1.89-.220 IN]		408-8323 & 408-8490
TERMINAL APPL SPEC	114-3118	FEED 21.46 [1.845 IN]

WIRE SIZE	CRIMP HEIGHT	REF SETTING
2.50mm ²	1.83 ± 0.05 [0.72 ± .002 IN]	C4
2.00mm ² or 14AWG	1.78 ± 0.05 [0.70 ± .002 IN]	C8
1.50mm ² or 16AWG	1.68 ± 0.05 [0.66 ± .002 IN]	D4
1.00mm ²	1.58 ± 0.05 [0.62 ± .002 IN]	E2
-	-	-
-	-	-
-	-	-
-	-	-
-	-	-
-	-	-
-	-	-
-	-	-
-	-	-
-	-	-

- ⚠ RECOMMENDED SPARE PARTS
- 2. GREASE RAM, CAM, CAM FOLLOWER AND FEED ROD LIGHTLY.
- ⚠ CERTAIN TERMINALS REQUIRE LUBRICATION. REFER TO THE APPLICATOR INSTRUCTION SHEET FOR MORE INFORMATION.
- 4. LUBRICATE DAILY PER THE APPLICATOR INSTRUCTION SHEET SUPPLIED WITH THE APPLICATOR.
- ⚠ INS CRIMP FORM AS PER ORIGINAL CUSTOMER REQUEST.
- ⚠ THIS APPLICATOR HAS BEEN DESIGNED TO APPLY FLY TYPE INSULATION. INSULATION RANGE SHOWN IS THAT OF THE APPLICATOR.



*** WARNING**
 ON INSTALLATION, SET WIRE DISC TO LARGEST WIRE SIZE SETTING. USE OF SETTINGS BELOW MIN. REQUIRED CRIMP HEIGHT SETTING WILL CAUSE DAMAGE TO CRIMP TOOLING.

-	1	1	1338705-4	DOCUMENTATION PACKAGE	71
-	1	1	461264-5	PLATE, IDENTIFICATION	67
-	2	2	21017-2	SCREW, DRIVE	66
-	1	1	3-18031-0	SCR, SET, CUP POINT M6 X 6.0	63
-	1	1	18024-7	SCR, BTN SKT HD CAP (M4 X 10.0)	60
-	2	2	1-18023-3	SCR, SKT HD CAP M4 X 16.0	58
-	3	3	1-18023-0	SCR, SKT HD CAP M4 X 8.0	57
-	2	2	1-18023-2	SCR, SKT HD CAP M4 X 12.0	56
-	2	2	18029-1	NUT, HEX, REG M3	54
-	2	2	986965-1	NUT, LOCK, HEX, TORQUE (M4)	53
-	2	2	2-18032-2	SCR, SET, FLT POINT M3 X 10.0	52
-	1	1	18024-3	SCR, BTN SKT HD CAP (M3 X 10.0)	49
-	1	1	1338676-1	CAM, UNIVERSAL POST-FEED	47
-	1	1	1338662-2	SUB ASSY, APPLICATOR FRAME	46
-	1	1	690191-1	PLUG, NYLON	45
-	1	1	1320998-1	RAM	44
-	1	1	2-18024-6	SCR, BTN SKT HD CAP (M8 X 25.0)	41
-	1	1	690125-1	SHIM SUB-ASSY	39
-	1	1	469367-4	SHIM	38
-	1	1	879103-2	FINE ADJUST HEAD ASSEMBLY	37
-	3	3	18027-2	WASHER, FLAT, REG M4	33
-	4	4	18025-2	WASHER, SPRG LOCK, REG M4	32
-	2	2	1-18024-0	SCR, BTN SKT HD CAP (M4 X 20.0)	31
-	2	2	18024-8	SCR, BTN SKT HD CAP (M4 X 12.0)	29
-	1	1	3-690451-2	SPACER, STRIPPER	28
-	1	1	240639-1	STRIPPER (MACHINING)	27
-	2	2	1320906-1	STUD, THREADED	25
-	1	1	1320995-6	PLATE, STRIP GUIDE	24
-	1	1	240825-2	PLATE, STRIP HOLD DOWN	23
-	2	2	4-22281-1	SPRING, DRAG	22
-	1	1	1338665-1	DRAG	20
-	2	2	1338663-5	GUIDE, LOWER STRIP	18
-	4	4	1-18024-8	SCR, BTN SKT HD CAP (M6 X 12.0)	17
-	1	1	1338708-1	SPACER, SLUG BLADE	16
-	1	1	690481-9	SPACER, HOLD DOWN	13
-	1	1	23846-1	SPRING, DIE	12
-	1	1	240833-2	PLATE, REAR SHEAR	11
-	1	1	1-690482-0	PLATE, FRONT SHEAR	9
-	1	2	1333219-3	ANVIL, COMBINATION	8
-	1	1	690474-3	BLADE, SLUG	7
-	1	1	1-455892-1	HOLD DOWN, TERMINAL	6
-	1	1	4-240641-1	SPACER	5
-	1	1	238009-1	BLOCK, FL CRIMPER SPACER	4
-	1	2	1633569-8	CRIMPER, INSULATION OVERLAP	3
-	1	1	1-455888-0	SPACER, CRIMPER	2
-	1	2	456408-5	CRIMPER, WIRE PREMIUM	1

DIMENSIONS:		TOLERANCES UNLESS OTHERWISE SPECIFIED:	
INCHES	0 PLC ± .01	1 PLC ± .01	2 PLC ± .01
	3 PLC ± .001	4 PLC ± .001	ANGLES ± .0001

DATE	28APR2008	CHK	M. BETISS
APPROVED	28APR2008	NAME	M. CLIFFORD
CUSTOMER DRAWING		SCALE	3:5
SHEET 1 OF 1		REV	A