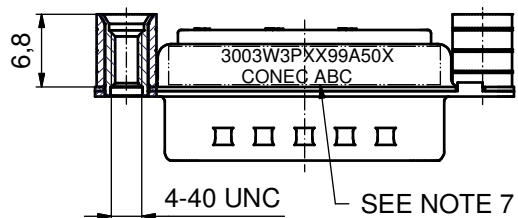
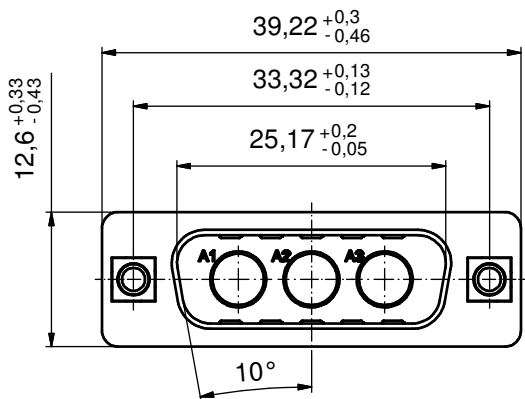
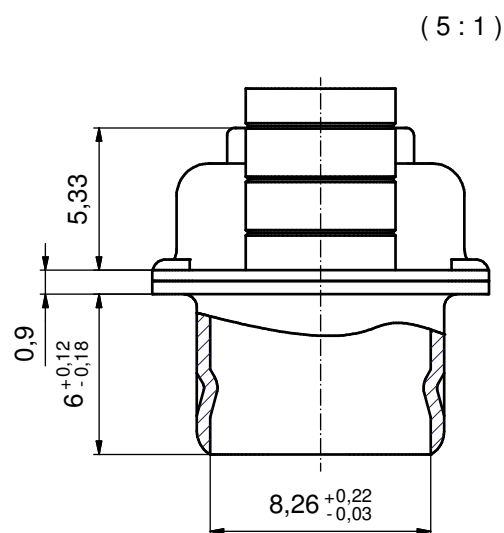
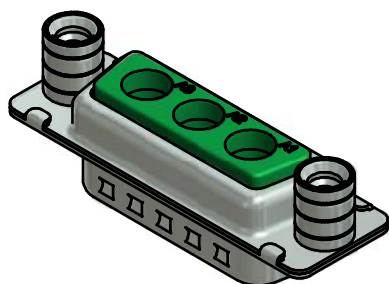


P.C.B. HOLE DRILLINGS  
(P.C.B. TOP SIDE)



SEE NOTE 7



(5:1)

NOTES:

1. METALSHIELDS: STEEL; min. 315µm TIN over 40-80µm NICKEL
2. INSULATOR: PBT GF UL 94 V-0, GREEN
3. NO CONTACTS ON POS. A1 - A3
4. THREADED REAR SPACERS: COPPER ALLOY; min. 200µm TIN over 80µm NICKEL
5. SLEEVES: COPPER ALLOY; min. 200µm TIN over 80µm NICKEL
6. MAXIMUM TORQUE VALUE FOR THREAD: 6 in.LB
7. CONNECTOR IS PART MARKED: **3003W3PXX99A50X CONEC ABC**

Directive 2002/95/EC RoHS compliant

THIS DRAWING MAY NOT BE COPIED OR REPRODUCED IN ANY WAY, AND MAY NOT BE PASSED ON TO A THIRD PARTY WITHOUT WRITTEN PERMISSION. OWNERSHIP AND COPYRIGHT OF CONEC GmbH  DO NOT ALTER CAD DRAWING BY HAND					tolerance		scale: 2:1 (5:1)	
					dim. in mm		material: SEE NOTES	
					date	name	title:	
					drawn	26.06.14	Henneboel	D-SUB COMBINATION MALE 3W3P with threaded rear spacer
					appd.	26.06.14	Lehmenkühler	
					norm			
					d-old			dwg no:
a	Original			<b>CONEC</b> <sup>®</sup>			13K1A4702	DIN-A3
rev.	description	date	name				part no:	3003W3PXX99A50X