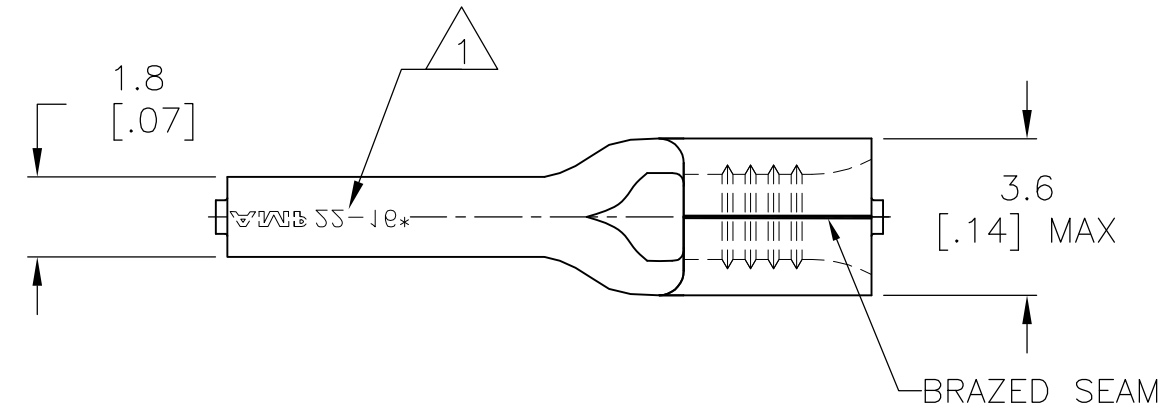


THIS DRAWING IS UNPUBLISHED. RELEASED FOR PUBLICATION  
 © COPYRIGHT - By - ALL RIGHTS RESERVED.

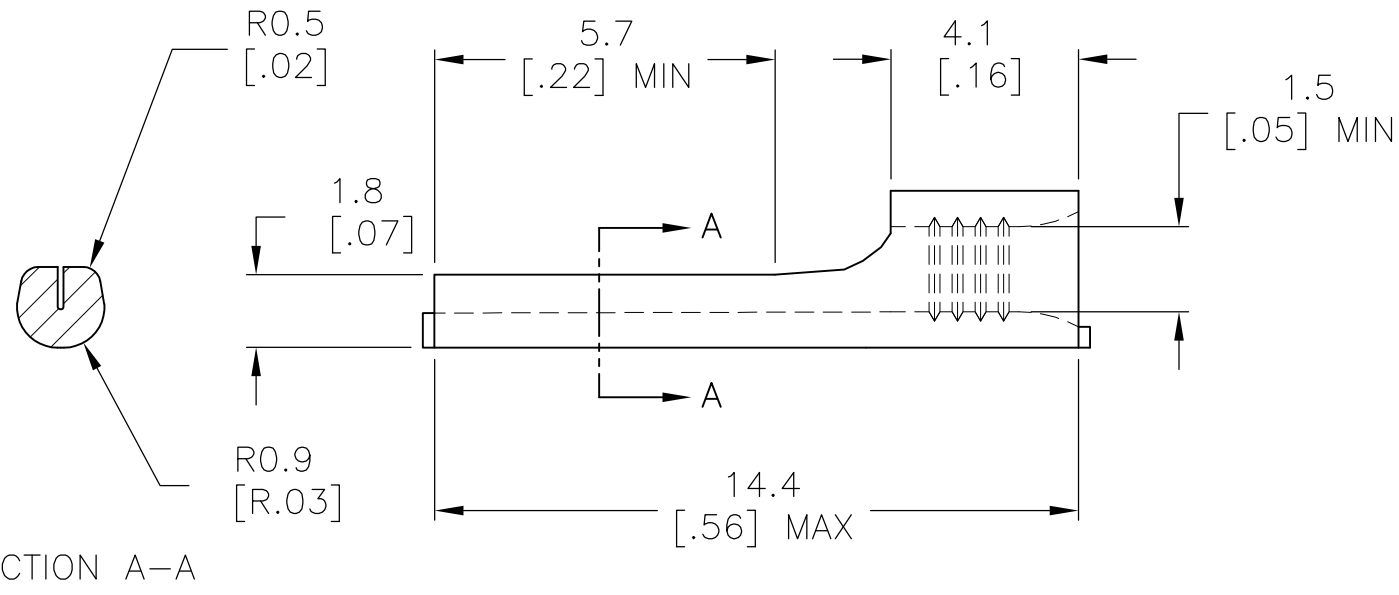
LOC	DIST	REVISIONS					
G	86	P	LTR	DESCRIPTION	DATE	DWN	APVD
			A1	REVISED PER ECO-14-003208	19MAR2014	NK	DR

**AMP**  
WIRE RANGE

22-16 AWG  
SOLID OR STRANDED



- 1 STAMP AMP 22-16\* APPROX AS SHOWN
- 2 MAX RECOMMENDED OPERATING TEMPERATURE 170°C [338°F]



1000	LOOSE PIECE	165140
QTY	PACKAGE TYPE	PART NO

THIS DRAWING IS A CONTROLLED DOCUMENT.		DWN JR RUTH 12AUG10	<b>TE Connectivity</b>  TERMINAL, WIRE PIN, SOLISTRAND, WIRE SIZE, 22-16 AWG				
DIMENSIONS: mm [INCHES]		CHK TOM MICHIELUTTI 12AUG10				NAME	
		APVD TOM MICHIELUTTI 12AUG10				PRODUCT SPEC	
TOLERANCES UNLESS OTHERWISE SPECIFIED:		APPLICATION SPEC					
0 PLC ± - 1 PLC ± 0.20 [.007] 2 PLC ± - 3 PLC ± - 4 PLC ± - ANGLES ± -		WEIGHT	SIZE	CAGE CODE	DRAWING NO	RESTRICTED TO	
MATERIAL COPPER PER ASTM B152		FINISH TIN PLATE PER ASTM B545	-	A3	00779	C-165140	-
CUSTOMER DRAWING			SCALE	SHEET	REV		
			6:1	1 OF 1	A1		