

6

5

4

3

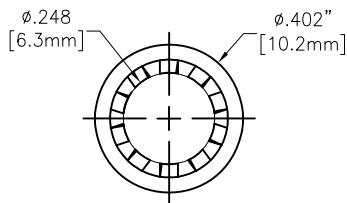
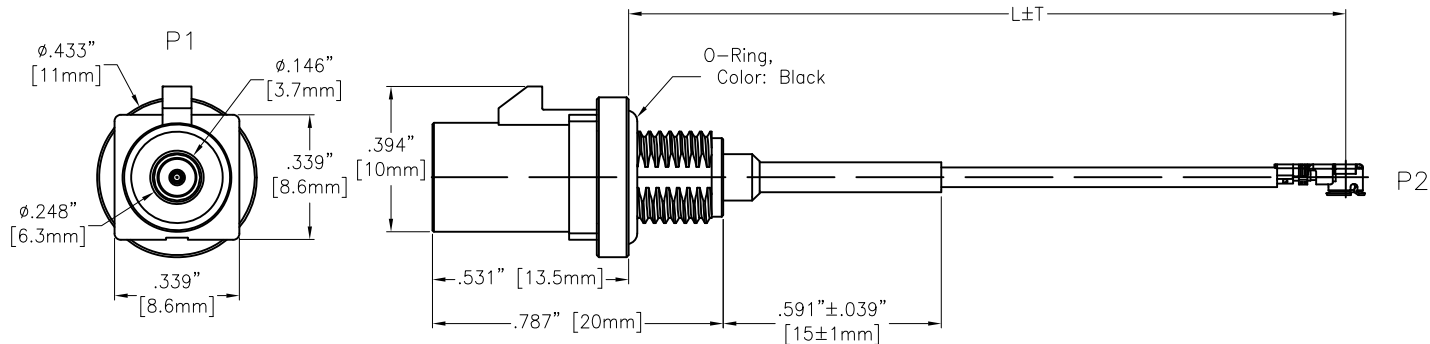
2

1

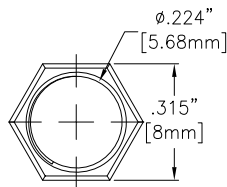
APPROVED: \_\_\_\_\_

DATE: \_\_\_\_\_ TITLE: \_\_\_\_\_

Rev	AWO #	Description	Date	Appr
-		RELEASED	10/28/22	



Lock Washer: Nickel



Coding (See sht 2)

CA-FMP4-XX001XWP

ADAM P/N	L+T	
CA-FMP4-XX001005WP	1.969" ±.197"	50±5mm
CA-FMP4-XX001010WP	3.937" ±.197"	100±5mm
CA-FMP4-XX001015WP	5.906" ±.197"	150±5mm
CA-FMP4-XX001020WP	7.874" ±.197"	200±5mm

**SPECIFICATIONS:**

**Connector:**

P1= FAKRA Plug Code See page2, Straight, Terminal: Brass Gold Plated, Shell: Brass, Nickel  
P2= I-PEX MHF 4L 20362, Gold plated

**Cable:**

30AWG, OD.: .054" [1.37mm], Jacket Color: Grey

**Electrical:**

Impedance: 50ohm

Temperature Rating:

Operating temperature: -40°C to +90°C

**Electrical Test:**

All Assemblies must be 100% Tested for Shorts, Open, Continuity, and Physical Appearance.

Environmental:

IP Rating: IP67 (Connector to panel)

Lead free, RoHS compliant



UNLESS OTHERWISE SPECIFIED ALL DIMENSIONS ARE INCHES [MM]. TOLERANCES: EXCEPT AS NOTED

INCHES		HOLES	
.X	±.10	Ø.X	±.10
.XX	±.020	Ø.XX	±.015
.XXX	±.015	Ø.XXX	±.010

**ADAM TECH** 909 Rahway Avenue, Union, NJ 07083  
Phone: 908-687-5000 Fax: 908-687-5710

DRAWN	WX	10/28/22
CHECKED	RC	10/28/22
APPROVED		

TITLE  
CUSTOM CABLE ASSEMBLY, FAKRA PLUG STRAIGHT TO MHF 4L 20362, 30AWG, O.D: 1.37, IP67 RATED

THIS DRAWING CONTAINS INFORMATION THAT IS PROPRIETARY AND SHOULD NOT BE USED WITHOUT PRIOR WRITTEN PERMISSION FROM ADAM TECH

SIZE	PART NO.	REV.
X	CA-FMP4-XX001XWP	-
REF:	S00013T	SCALE: NTS SHEET 1 OF 2

6

5

4

3

2

1

6

5

4

3

2

1

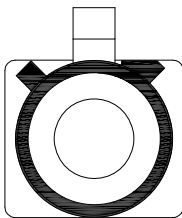
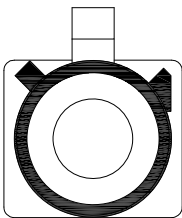
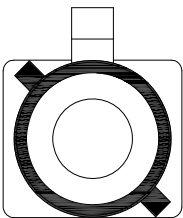
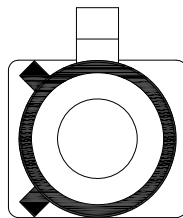
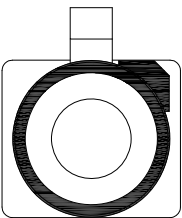
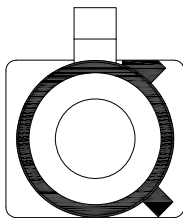
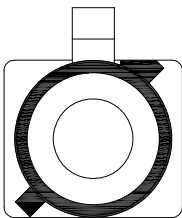
APPROVED: \_\_\_\_\_

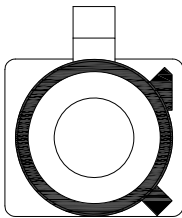
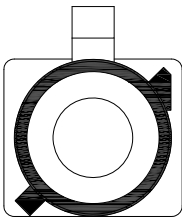
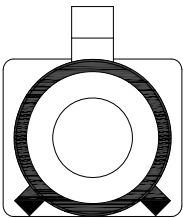
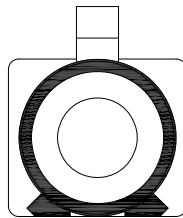
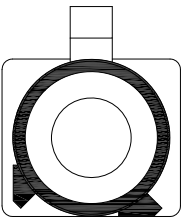
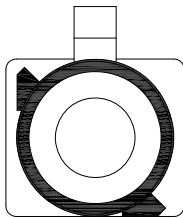
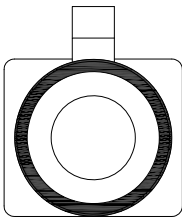
DATE: \_\_\_\_\_ TITLE: \_\_\_\_\_

Rev	AWO #	Description	Date	Appr
-----	-------	-------------	------	------

SEE SHT 1 OF 2 FOR REVISION

Fakra Jack

Coding	A	B	C	D	E	F	G
Plug							
Color	Black	White	Blue	Bordeaux Violet	Green	Brown	Grey

Coding	H	I	K	L	M	N	Z
Plug							
Color	Violet	Beige	Curry	Camine Red	Pastel Orange	Pastel Green	Water Blue

CA-FMP4-XX001XWP

P1 Coding

(Replace X with coding letter)

UNLESS OTHERWISE SPECIFIED ALL DIMENSIONS ARE INCHES [MM]. TOLERANCES: EXCEPT AS NOTED

INCHES		HOLES	
.X	±.10	∅.X	±.10
.XX	±.020	∅.XX	±.015
.XXX	±.015	∅.XXX	±.010



909 Rahway Avenue,  
Union, NJ 07083  
Phone: 908-687-5000  
Fax: 908-687-5710

DRAWN	WX	10/28/22
CHECKED	RC	10/28/22
APPROVED		

TITLE  
CUSTOM CABLE ASSEMBLY, FAKRA PLUG STRAIGHT TO MHF 4L 20362, , 30AWG, O.D: 1.37, IP67 RATED

THIS DRAWING CONTAINS INFORMATION THAT IS PROPRIETARY AND SHOULD NOT BE USED WITHOUT PRIOR WRITTEN PERMISSION FROM ADAM TECH

SIZE X	PART NO. CA-FMP4-XX001XWP	REV. -
REF: S00013T	SCALE: NTS	SHEET 2 OF 2

6

5

4

3

2

1