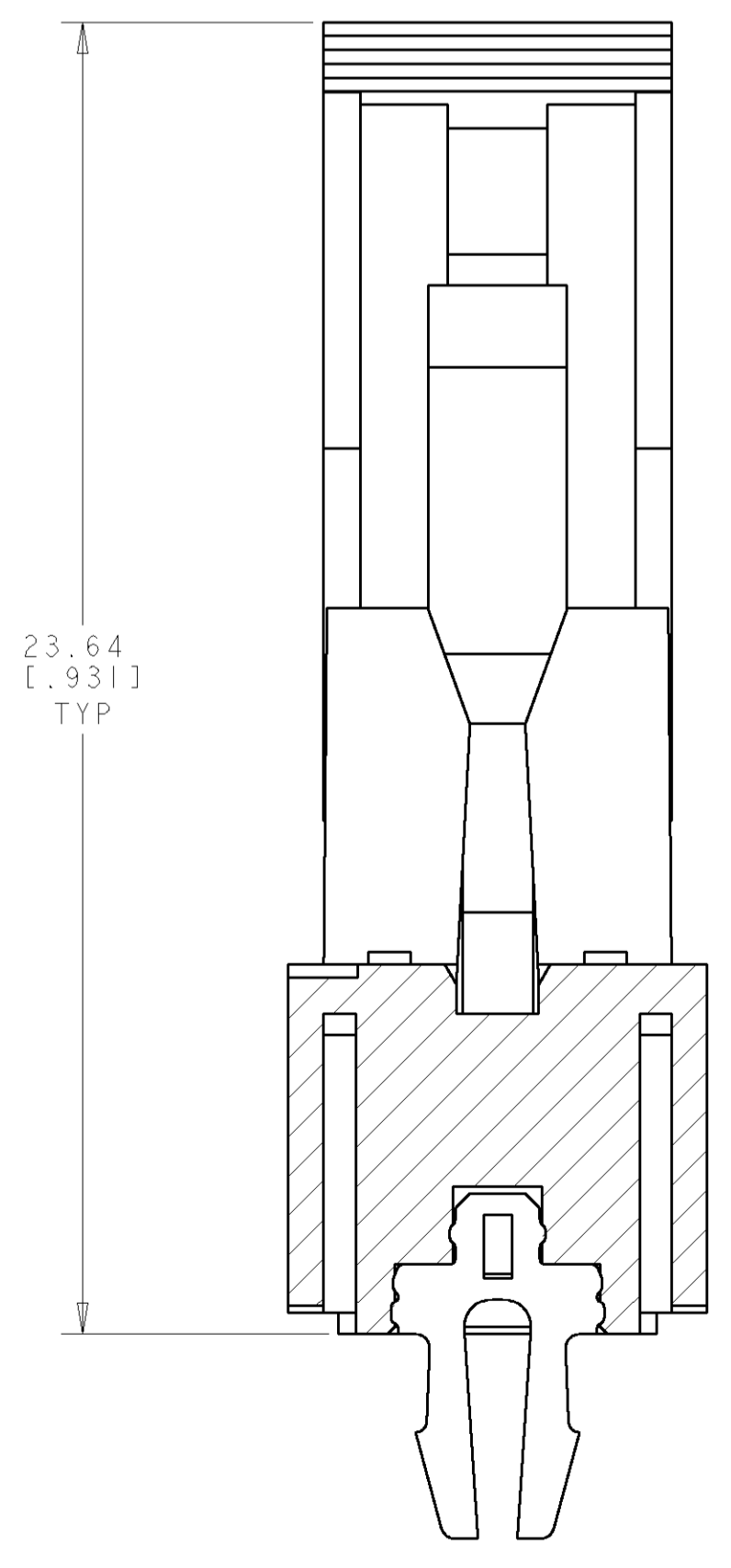
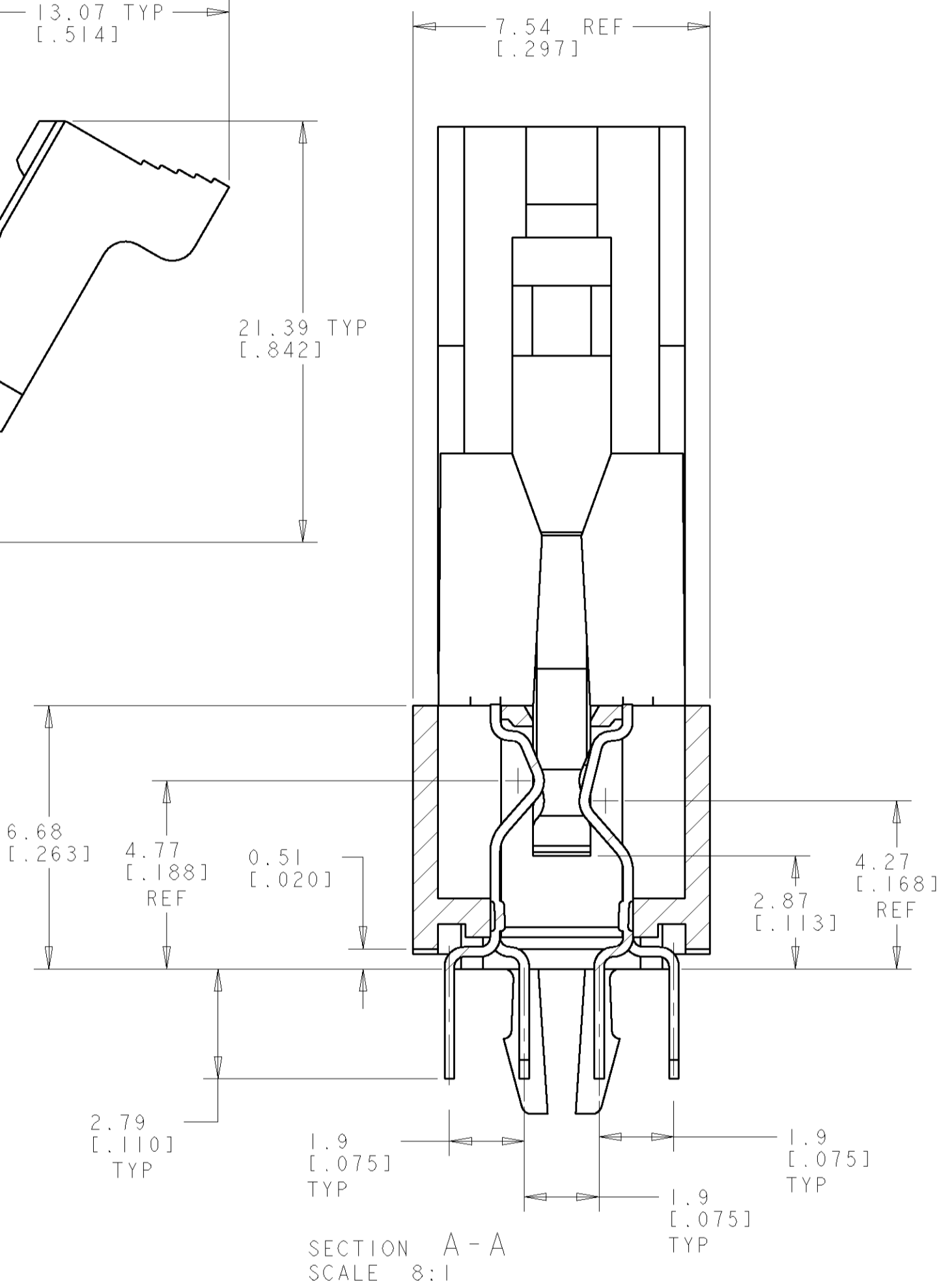
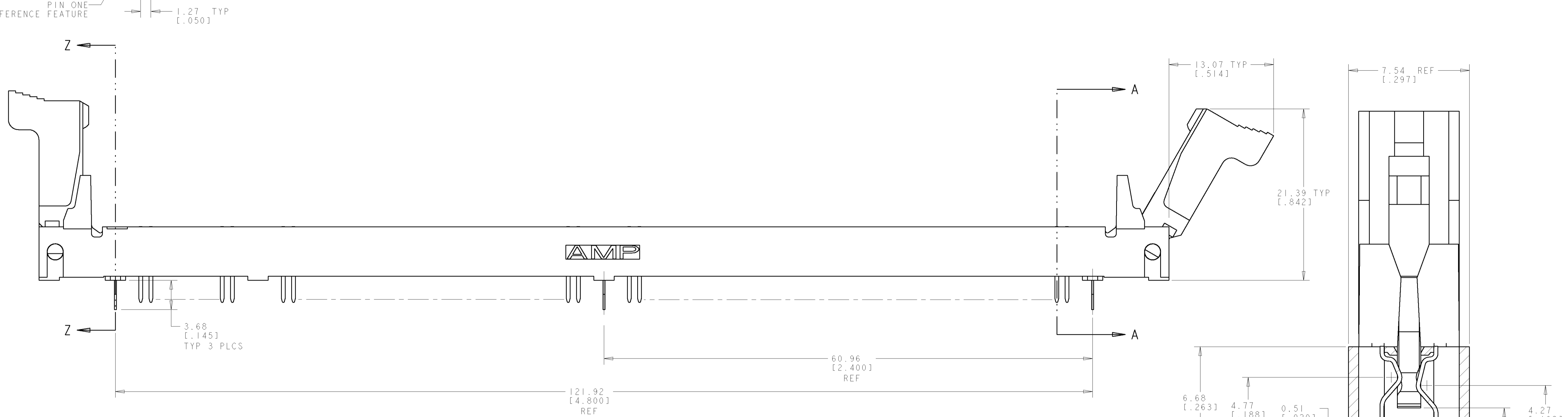
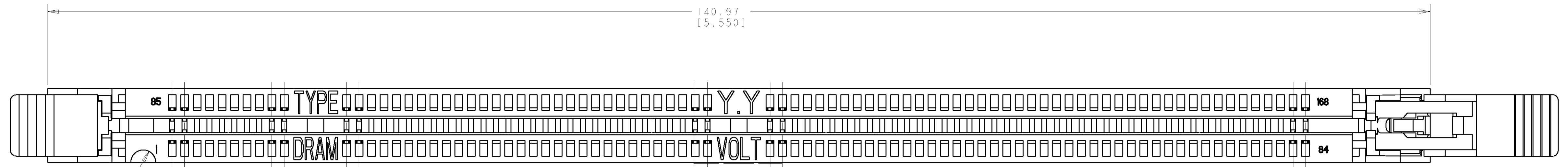


LOC	DIST	REV	DATE	BY	CHKD
GP	0				

REVISIONS			
REV	DATE	BY	APPD
H	23JAN02	DD	DS
J	15FEB02	JB	DS
K	20FEB02	JB	DS
L	04MAR02	JB	DS



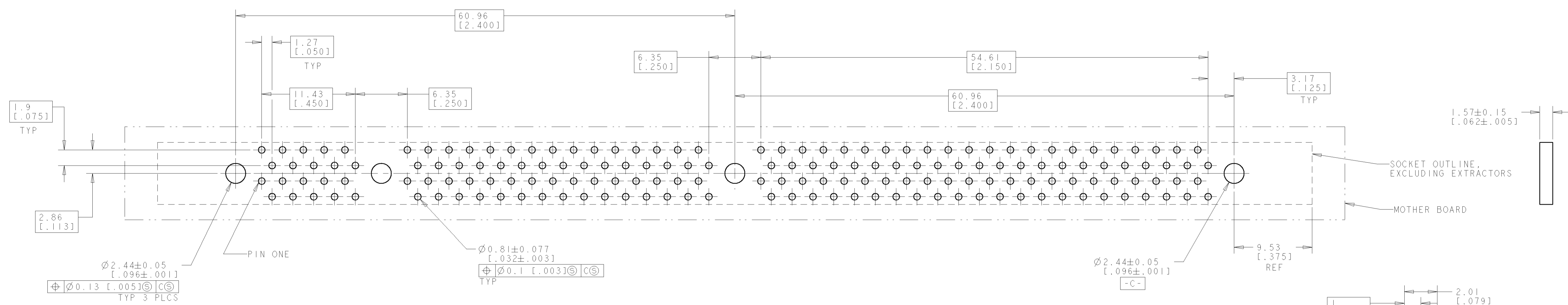
KEY #1	KEY #2	PART DESCRIPTION	PART NUMBER
DETAIL C	DETAIL A	NON-BUFFERED DRAM, 3.3 VOLT	6-390074-6
DETAIL C	DETAIL A	NON-BUFFERED DRAM, 3.3 VOLT	5-390074-6
DETAIL C	DETAIL A	NON-BUFFERED DRAM, 3.3 VOLT	4-390074-6
DETAIL C	DETAIL A	NON-BUFFERED DRAM, 3.3 VOLT	3-390074-6
DETAIL C	DETAIL A	NON-BUFFERED DRAM, 3.3 VOLT	2-390074-6
DETAIL C	DETAIL A	NON-BUFFERED DRAM, 3.3 VOLT	1-390074-6
DETAIL A	DETAIL A	STD DRAM, 3.3 VOLT	1-390074-4
DETAIL C	DETAIL A	NON-BUFFERED DRAM, 3.3 VOLT	390074-6
DETAIL B	DETAIL A	SYNC DRAM, 3.3 VOLT	390074-5
DETAIL A	DETAIL A	STD DRAM, 3.3 VOLT	390074-4
DETAIL A	DETAIL B	STD DRAM, 5 VOLT	390074-1

- 1 FOR OPTIMUM PERFORMANCE, CONTACT PAD PLATING SHOULD BE SMOOTH AND FLAT. COPPER CONTACT PADS ARE TO BE OVERPLATED WITH 0.00127 [0.00050] MIN THK NICKEL FOLLOWED WITH 0.00102 [0.00040] MIN THK GOLD PLATING.
- 2 CONTACT MATING AREA: 0.00076 [0.00030] MIN THICK GOLD OVER 0.00381 [0.000150] NICKEL OR GOLD FLASH OVER 0.00051 [0.00020] MIN THICK 80/20 PALLADIUM-NICKEL. MIN THICK. SOLDER TAILS: 0.00381 [0.000150] MIN THICK TIN-LEAD UNDERPLATE: 0.00127 [0.00050] MIN THICK NICKEL OVER ENTIRE CONTACT.
- 3 MATERIAL: HOUSING AND EXTRACTORS: GLASS FILLED, HIGH TEMPERATURE NYLON. CONTACTS: PHOS BRONZE
- 4 PART NUMBER 1-390074-4 AND 1-390074-6 PACKAGED IN TUBES.
- 5 EXTRACTOR MATERIAL: GLASS-FILLED, HIGH TEMPERATURE NYLON, COLOR-GRAY.
- 6 EXTRACTOR TO BE INSERTED IN PIN 1 END.
- 7 EXTRACTOR TO BE INSERTED IN PIN 84 END.
- 8 SEE SHEET 3 FOR DETAILS.
- 9 USE ONLY GOLD PLATE OPTION FOR THIS DASH NUMBER.

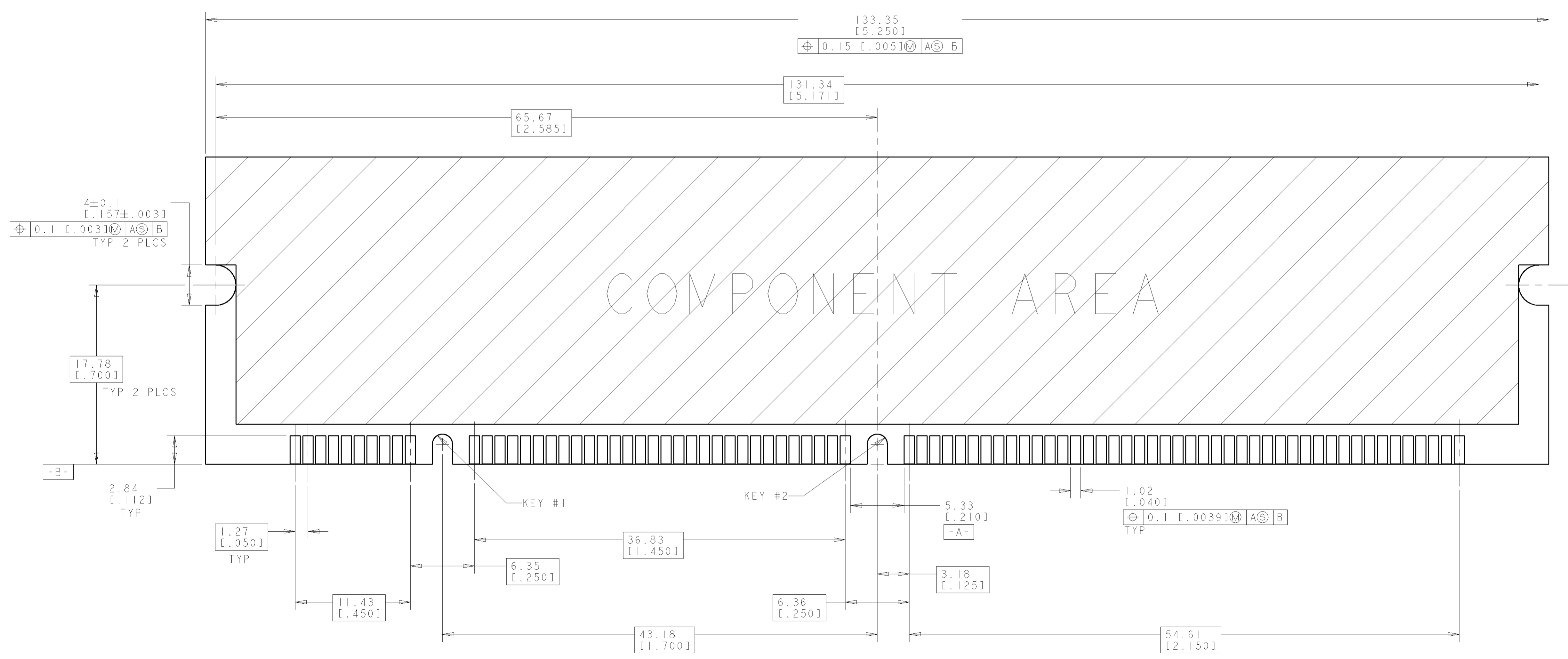
<small>THIS DRAWING IS A CONTROLLED DOCUMENT FOR AMP INCORPORATED. ALL CHANGES TO THIS DRAWING MUST BE CONTROLLED BY THE ORGANIZATION THAT ISSUED THIS DRAWING. FOR THE LATEST REVISION, CONTACT THE ORGANIZATION THAT ISSUED THIS DRAWING.</small>		DWN: W. SORAH 21-AUG-96 ENR: R. TALLEY 21-AUG-96 APD: P. SMITH 21-AUG-96	<b>AMP</b> AMP Incorporated Harrisburg, PA 17105-3608
DIMENSIONS: mm [INCHES]	TOLERANCES UNLESS OTHERWISE SPECIFIED: 0 PLC ± 1 PLC ±0.13 [0.005] 2 PLC ± 3 PLC ± 4 PLC ± 5 PLC ±	NAME: SOCKET ASSY, DUAL READ-OUT, VERSION II, 17.78 [0.700], LOCKING EXTRACTORS, 168 POSITION PRODUCT SPEC: APPLICATION SPEC: SIZE: A1 CAGE CODE: 00779 DRAWING NO: C-390074	SCALE: 4:1 SHEET 1 OF 3 REV
MATERIAL: 3 FINISH: 1, 2		WEIGHT: - CUSTOMER DRAWING	

LOC	DIST	REV	DATE	BY	APPD
GP	0				

REVISIONS			
NO.	DESCRIPTION	DATE	BY
-	SEE SHEET 1	-	-

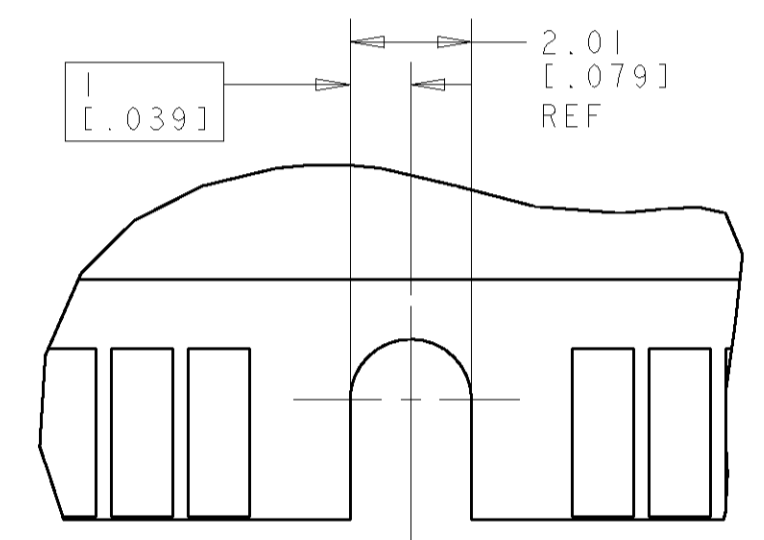


RECOMMENDED CIRCUIT BOARD HOLE LAYOUT

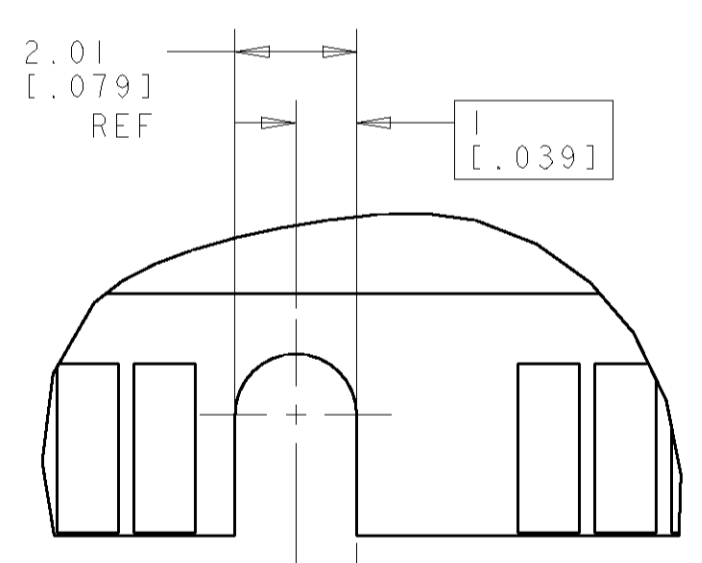


RECOMMENDED MODULE LAYOUT

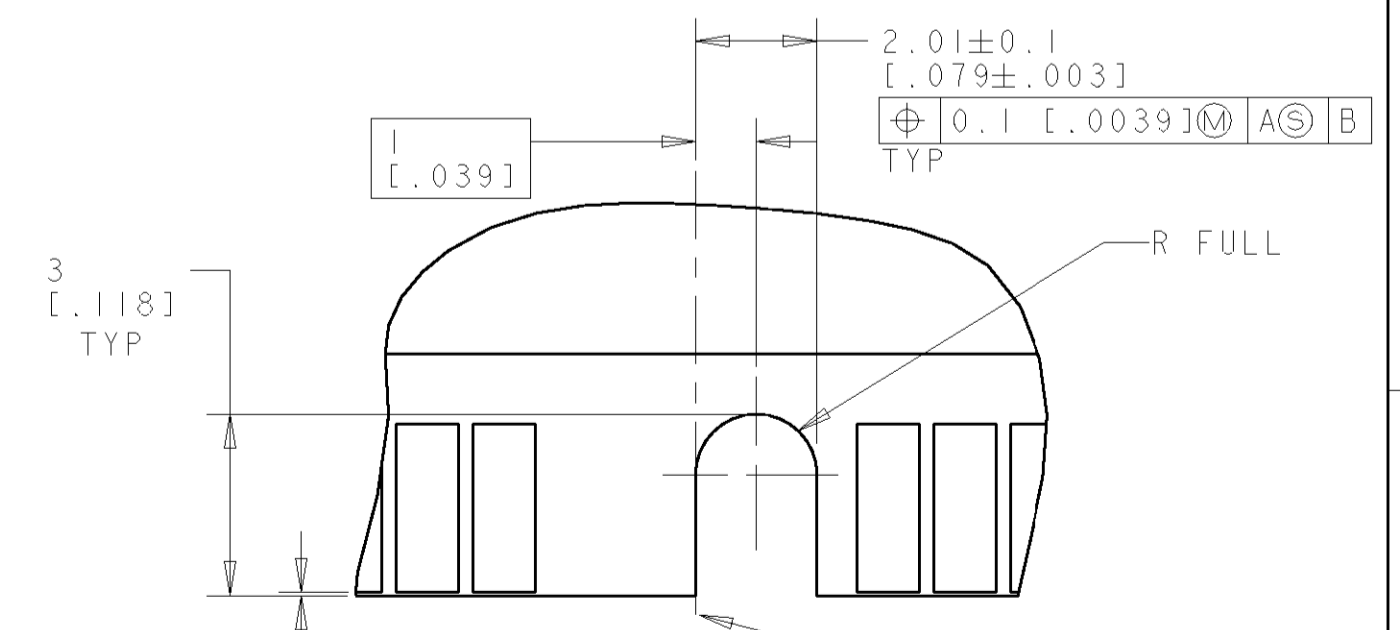
SEE JEDEC SPEC. MO-161 FOR COMPLETE MODULE DETAILS  
1.27±0.10 [0.050±0.004] THICK ACROSS CONTACT PADS



DETAIL A  
SCALE 8:1



DETAIL B  
SCALE 8:1

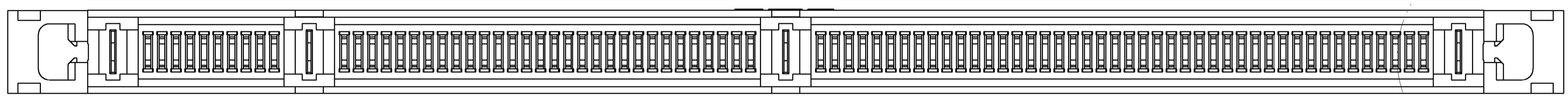
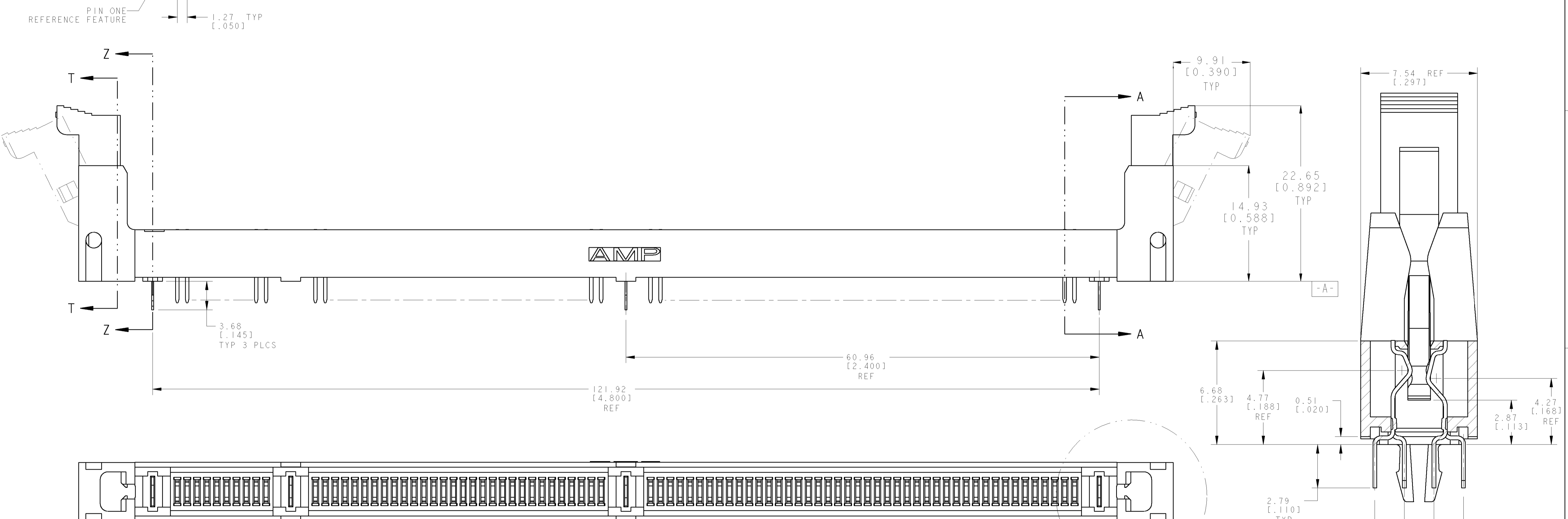
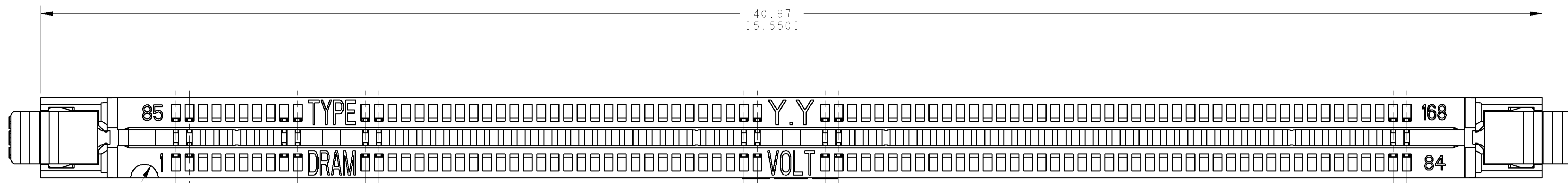


DETAIL C  
SCALE 8:1

<small>THIS DRAWING IS A CONTROLLED DOCUMENT FOR AMP INCORPORATED. ALL CHANGES TO THIS DRAWING MUST BE CONTROLLED BY THE ORGANIZATION THAT ISSUED THIS DRAWING. FOR THE LATEST REVISION.</small>		DWN: W. SORAH 21-AUG-96 ENR: R. TALLEY 21-AUG-96 APD: P. SMITH 21-AUG-96	AMP Incorporated Harrisburg, PA 17105-3608
DIMENSIONS: mm [INCHES]	TOLERANCES UNLESS OTHERWISE SPECIFIED: 0 PLC ± 1 PLC ± 2 PLC ±0.13 [0.005] 3 PLC ± 4 PLC ± ANGLES ±1°	NAME: SOCKET ASSY, DUAL READ-OUT, VERSION II, 17.78 [0.700], LOCKING EXTRACTORS, 168 POSITION PRODUCT SPEC: APPLICATION SPEC: CAGE CODE: DRAWING NO: A1 00779 C=390074	SCALE: 4:1 SHEET: 2 OF 3 REV: 1
MATERIAL: SEE SH 1	FINISH: -	WEIGHT: -	CUSTOMER DRAWING

LOC	DIST	REV	DATE	BY	APPD
GP	0				

REVISIONS			
NO.	DESCRIPTION	DATE	BY
1	SEE SHEET 1		



SEE DETAIL D

- 1 FOR OPTIMUM PERFORMANCE, CONTACT PAD PLATING SHOULD BE SMOOTH AND FLAT. COPPER CONTACT PADS ARE TO BE OVERPLATED WITH 0.00127 [0.00050] MIN THK NICKEL FOLLOWED WITH 0.00102 [0.00040] MIN THK GOLD PLATING.
- 2 CONTACT MATING AREA: 0.000762 [0.00030] MIN GOLD. SOLDER TAILS: 0.00381 [0.00150] MIN THK TIN-LEAD UNDERPLATE: 0.00127 [0.00050] MIN THK NICKEL OVER ENTIRE CONTACT.
- 3 MATERIAL: HOUSING AND EXTRACTORS: GLASS FILLED, HIGH TEMPERATURE NYLON. CONTACTS: PHOS BRONZE
- 4 EXTRACTOR MATERIAL: POLYSULFONE THERMOPLASTIC. COLOR: NATURAL AMBER

5-390074-6 SHOWN

DIMENSIONS: 		TOLERANCES UNLESS OTHERWISE SPECIFIED: 0 PLC ± 1 PLC ± 2 PLC ±0.13 [0.005] 3 PLC ± 4 PLC ± ANGLES ±1° FINISH		DWN: W. SORAH 21-AUG-96 ENR: R. TALLEY 21-AUG-96 APPD: P. SMITH 21-AUG-96 NAME: SOCKET ASSY, DUAL READ-OUT, VERSION II, 17.78 [0.700], LOCKING EXTRACTORS, 168 POSITION SIZE: A1 CAGE CODE: 00779 DRAWING NO: C-390074 SCALE: 4:1 SHEET: 3 of 3 REV:	
MATERIAL		WEIGHT		CUSTOMER DRAWING	

KEY #1	KEY #2	PART DESCRIPTION	PART NUMBER
DETAIL C	DETAIL A	NON-BUFFERED DRAM, 3.3 VOLT	5-390074-6