

Customer Information Sheet

DRAWING No.: M30-601XXXX

SHEET 2 OF 2

IF IN DOUBT - ASK

©

NOT TO SCALE

THIRD ANGLE PROJECTION

ALL DIMENSIONS IN mm

OBSOLETE

SPECIFICATIONS:

MATERIAL:
 MOULDING = POLYAMIDE 46 (UL94V-0)
 CONTACTS = COPPER ALLOY
 RETAINER = COPPER ALLOY

FINISH:
 CONTACTS = 3µ MIN 100% TIN OVER NICKEL
 RETAINER = 1-2µ 100% TIN OVER COPPER

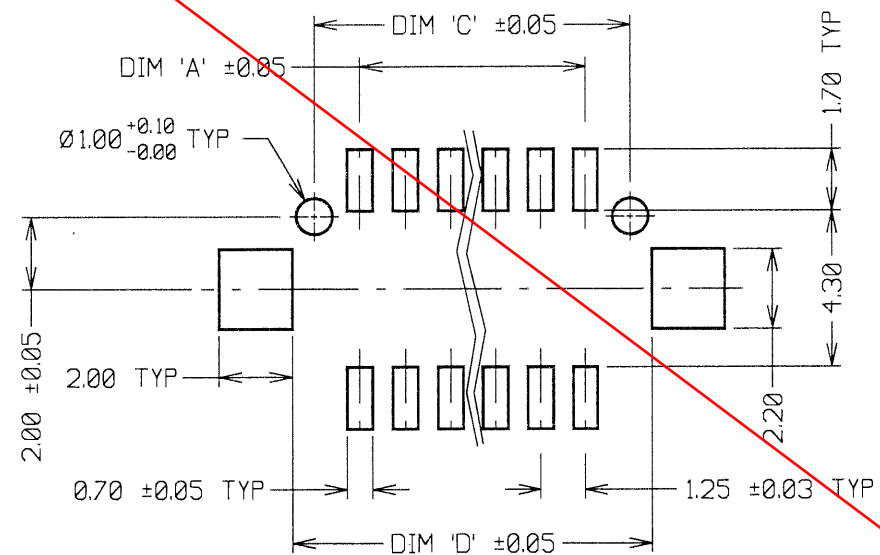
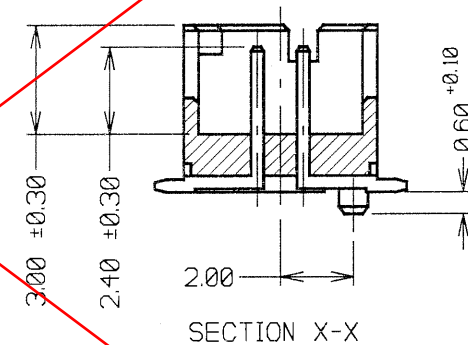
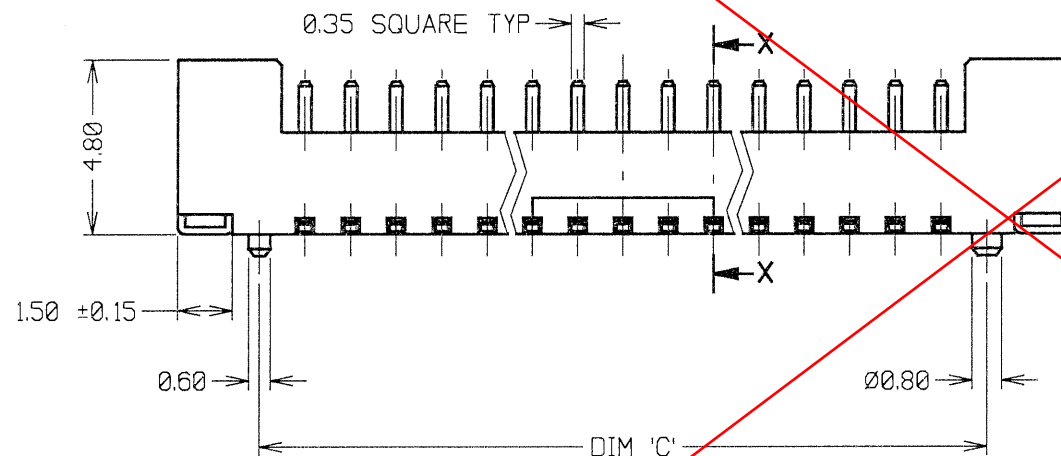
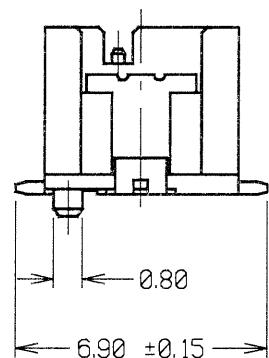
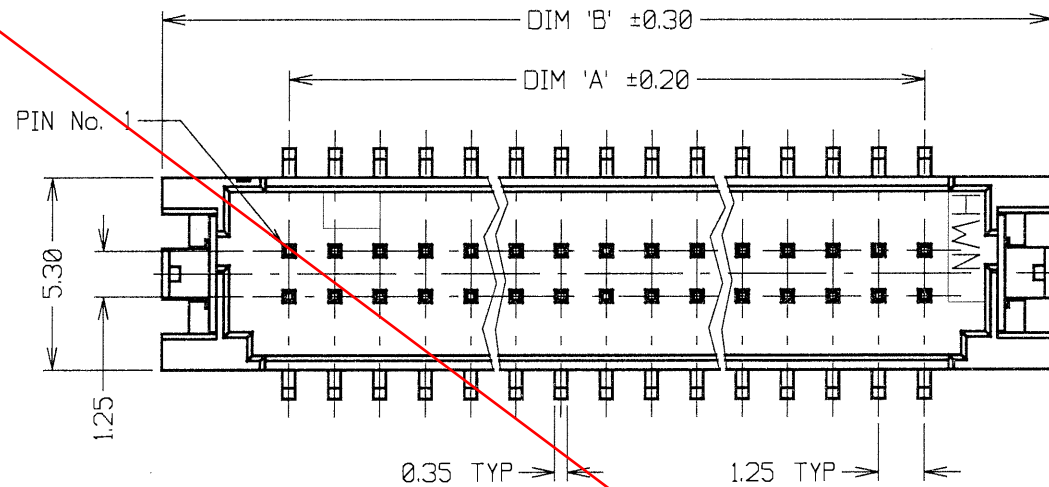
ELECTRICAL:
 CURRENT RATING = 1A AC/DC
 VOLTAGE RATING = 150V AC/DC
 CONTACT RESISTANCE = 30 MILLIOHMS MAX
 DIELECTRIC WITHSTANDING = 500V AC
 INSULATION RESISTANCE = 500 MEGOHMS MIN

MECHANICAL:
 PIN RETENTION = 9.8N MIN
 SOLDERABILITY = 260°C FOR 3 SECONDS

ENVIRONMENTAL:
 TEMPERATURE RANGE = -55°C TO +85°C

PACKING:
 TUBE

FOR COMPLETE SPECIFICATION, SEE COMPONENT SPECIFICATION C025XX (LATEST ISSUE)



HARWIN PART No.	No. OF WAYS	FINISH	DIM 'A'	DIM 'B'	DIM 'C'	DIM 'D'
M30-6011046	10 + 10	100% TIN	11.25	18.25	13.75	14.95
M30-6011546	15 + 15	100% TIN	17.50	24.50	20.00	21.20
M30-6012046	20 + 20	100% TIN	23.75	30.75	26.25	27.45
M30-6012146	21 + 21	100% TIN	25.00	32.00	27.50	28.70

ORDER CODE:
M30-601XX46

No. OF WAYS PER ROW
 10, 15, 20, 21

FINISH:
 46 = 100% TIN

JMB	3	18.01.06	8976
WJB	2	15.10.97	4121
WJB	1	04.08.97	----
NAME	ISS.	DATE	C/NOTE
APPROVED: <i>[Signature]</i>			
CHECKED: <i>[Signature]</i>			
DRAWN: WJ BOURNE			
CUSTOMER REF.:			
ASSEMBLY DRG:			

HARWIN			THIS DRAWING AND ANY INFORMATION OR DESCRIPTIVE MATTER SET OUT HEREON ARE CONFIDENTIAL AND COPYRIGHT PROPERTY OF THE HARWIN GROUP AND MUST NOT BE DISCLOSED, LOANED, COPIED OR USED FOR MANUFACTURING, TENDERING OR FOR ANY OTHER PURPOSE WITHOUT THEIR WRITTEN PERMISSION.	TOLERANCES X. = ±1mm X.X = ±0.25mm X.XX = ±0.10mm X.XXX = ±0.01mm ANGLES = ±5° UNLESS STATED	MATERIAL: SEE ABOVE	TITLE: 1.25mm PITCH DIL VERTICAL SMT PIN HEADER
HARWIN USA TEL: 603 893 5376 FAX: 603 893 5396 mis@harwin.com	HARWIN Europe (UK) TEL: 023 9231 4545 FAX: 023 9231 4590 mis@harwin.co.uk	HARWIN Asia TEL: +65 6 779 4909 FAX: +65 6 779 3868 mis@harwin.com.sg		FINISH: SEE ABOVE S/AREA: mm ²	DRAWING NUMBER: M30-601XXXX	SHT 2 OF 2