

DRAWING MADE IN THIRD ANGLE PROJECTION

687390 687390

PART NUMBER	REV	FIRST USED
687390-1	W	122500-1
687390-2	A	
687390-3	A	
687390-4	C	
687390-5	W	565435-5

SUPERSEDED BY 687390-1
OBSOLETE
SUPERSEDED BY 687390-5

TERMINAL NAME:		CRIMPING DATA	
PIN RECPT.	FLAG, Ø.090	PAD LTR	CRIMP HEIGHT
	42745	A	.067 ±.002 [1.7 ±0.03]
	60376	B	.063 ±.002 [1.6 ±0.03]
	63593	C	.060 ±.002 [1.52 ±0.03]
		D	.058 ±.002 [1.47 ±0.03]
		CRIMP SIZE	TYPE RANGE
		WIRE .140	TAB LOCK 20-14
		INSUL .180	0 .120-.170
FEED .600	APPL INST AI 8031 & 8032	SET UP GAGE	LAYOUT
TERM APPL SPEC 114-2078			
WIRE STRIP LENGTH .130-.145			

-1	LEADMAKER	MECH POST FEED
-5	BENCH MODEL K	AIR FEED

- 1 RECOMMENDED SPARE PARTS.
- 2 GREASE LIGHTLY.
- 3 LUBRICATE DAILY USING NO. 20 MACHINE OIL.
- 4. DO NOT EXCEED 80 C.P.M. WITH THIS APPLICATOR.
- 5 AFTER ASSEMBLY OF APPLICATOR, PROPER SPRING PRESSURE (ITEM 34) CAN BE OBTAINED BY TIGHTENING SET SCREW (ITEM 105) UNTIL CONTACT IS MADE WITH SPACER (ITEM 32) THEN TIGHTEN AN ADDITIONAL 5 1/2 - 6 REVOLUTIONS.
- 6 GUARD MUST BE IN PLACE WHEN OPERATING APPLICATOR IN A BENCH MACHINE.
- 7 ITEM NOT SHOWN

2	2	-	C	4-354779-4	PIN, WIRE DISC (.3210)D	129
2	2	-	C	4-354779-2	PIN, WIRE DISC (.3200)C	128
2	2	-	C	3-354779-8	PIN, WIRE DISC (.3180)B	127
2	2	-	C	3-354779-4	PIN, WIRE DISC (.3160)A	126
1	1	-	A	986950-1	WASHER, FLAT PRECISION	125
1	1	-	A	1-21030-2	PIN, DOWEL (Ø.187X.62)	124
1	1	-	A	1-21030-6	PIN, DOWEL (Ø.187X1.25)	123
						122
2	2	-	A	3-21028-2	PIN, SLOTTED SPRING (Ø.094X.25)	121
2	2	-	A	4-21028-9	PIN, SLOTTED SPRING (Ø.125X.38)	120
-	2	-	A	5-21028-1	PIN, SLOTTED SPRING (Ø.125X.50)	119
1	1	-	A	21029-5	PIN, SLOTTED SPRING (Ø.188X.75)	118
						117
-	1	-	A	21899-4	WASHER, FLAT (5/16)	116
4	4	-	A	21024-4	WASHER, LOCK (#8)	115
2	2	-	A	21055-6	WASHER, FLAT (#8)	114
2	2	-	A	21899-2	WASHER, FLAT (#10)	113
2	2	-	A	21024-5	WASHER, LOCK (#10)	112
1	-	-	A	457058-1	PIN, PIVOT	111
1	-	-	A	25745-1	RING, SPLIT	110
1	1	-	A	1-22202-7	NUT, HEX (5/16-24)	109
1	1	-	A	21022-3	NUT, HEX (LOCKING)(10-32)	108
-	1	-	A	21018-5	NUT, HEX (6-32)	107
2	2	-	A	21045-3	RING, RET "C" (Ø.187)FD PIN	106
1	1	-	A	8-21007-5	SCREW, SKT SET (5/16-24x.75)	105
7	7	-	A	2-22733-8	SCREW, BHC (1/4-20X.63)	104
1	-	-	A	1-21986-2	RING, RET "E" (Ø.187)	103
1	1	-	A	21009-2	SCREW, SKT SET (1/4-20x.25)	102
						101
2	2	-	A	3-21000-9	SCREW, SHC (10-32X1.00)	100
6	4	-	A	3-21000-8	SCREW, SHC (10-32X.88)	99
1	2	-	A	3-21000-6	SCREW, SHC (10-32X.62)	98
-	1	-	A	3-21000-4	SCREW, SHC (10-32X.38)	97
2	2	-	A	7-21000-6	SCREW, SHC (10-32X.38)	96
						95
2	2	-	A	4-21006-0	SCREW, SKT SET (8-32X.25)	94
1	1	-	A	21061-9	SCREW, SKT SET (8-32X.25)	93
-	2	-	A	3-21000-0	SCREW, SHC (8-32X0.88)	92
4	4	-	A	2-21000-9	SCREW, SHC (8-32X.75)	91
2	2	-	A	1-23030-1	SCREW, SHC (NYLOK)(8-32X.62)	90
2	2	-	A	2-21000-8	SCREW, SHC (8-32X.62)	89
4	4	-	A	2-22603-3	SCREW, HEX HD (8-32X.62)	88
1	1	-	A	2-21002-1	SCREW, BHC (8-32X.38)	87
2	-	-	A	3-21002-4	SCREW, BHC (1/4-20X .62)	86
-	1	-	A	6-23715-5	SCR, PAN HD (6-32x1.50)FEED ADJ	85
1	1	-	A	23030-1	SCREW, SHC (NYLOK)(8-32X.25)	84
-	1	-	A	2217626-1	CAP ASSEMBLY	83
						82
						81
						80
1	-	-	C	457244-2	GUARD ASSY	79
1	-	-	D	457098-1	AIR FEED ASSY	78
1	-	-	B	694427-1	PLATE, APPL MTG	77
2	2	-	A	21017-2	SCR, DRIVE (#2X.19)ID	76
1	1	-	B	461264-1	PLATE, IDENTIFICATION	75
1	1	-	A	690603-1	SPRING, ASSIST	74
						73
1	1	-	A	458109-1	WASHER, SPECIAL	72
						71

QTY REQD PER ASSY	REV	U/M	DWG SIZE	PART NO	DESCRIPTION	ITEM NO
-	1	-	A	22594-8	NUT, HEX	70
-	1	-	B	240628-1	PLATE, ADJ	69
-	1	-	B	240626-1	SHAFT, PIVOT	68
-	1	-	B	240633-1	BUSHING	67
-	1	-	A	240630-1	LEVER, INTERMEDIATE	66
-	1	-	B	1804317-1	BLOCK, PIVOT	65
-	1	-	A	1633286-1	SCR, ADJ	64
-	1	-	B	240659-3	PIN, CAM ROLLER	63
-	1	-	B	240658-1	ROLER, CAM	62
-	1	-	B	240631-1	ROD, FEED	61
1	-	-	B	456987-1	BLOCK, PIVOT	60
1	-	-	C	455164-1	CAP ASSEMBLY	59
-	1	-	D	2217625-1	HOUSING	58
1	-	-	D	457079-1	HOUSING	57
-	1	-	B	458361-1	GUIDE, FEED ROD	56
1	1	-	B	240624-1	PIN, FEED FINGER	55
1	1	-	B	691499-1	SPRING, FEED FINGER	54
1	1	-	B	454568-5	FINGER, FEED	53
-	1	-	B	240634-1	LEVER, TERMINAL	52
1	-	-	B	457057-1	ARM, PIVOT	51
1	-	-	A	22353-8	SCREW, SHOULDER	50
1	1	-	A	3-21002-5	BOLT, CRIMPER	49
-	1	-	B	690578-3	BLOCK, INSULATION ADJUST	48
-	1	-	B	238015-1	CAM, POST-FEED 1 5/8 ST	47
1	-	-	A	690578-1	BLOCK, INSULATION ADJUST	46
1	1	-	A	690191-1	PLUG, NYLON	45
1	-	-	C	454574-1	RAM	44
1	1	-	A	690125-1	WASHER, LAMINATED	43
1	1	-	A	690124-9	WASHER, RAM	42
-	1	-	C	2217624-1	RAM	41
1	1	-	A	23241-6	BALL, STEEL	40
1	1	-	A	690170-1	SPRING, COMPRESSION	39
1	1	-	C	690142-1	DISC, INSULATION	38
1	1	-	D	354777-1	WIRE DISC, PLASTIC	37
1	1	-	B	22480-5	WASHER, SPRING	36
1	1	-	B	690212-1	POST, RAM	35
1	1	-	A	3-23846-5	SPRING, HINGE BAR	34
						33
1	1	-	A	690573-1	SPACER, SPRING	32
1	1	-	C	454569-1	MOUNT, DRAG	31
1	1	-	A	1-22354-8	STUD, DRAG	30
1	1	-	A	21030-2	PIN, MOUNT, DRAG	29
1	1	-	B	690582-1	PIN, HINGE	28
						27
1	1	-	C	684905-1	PLATE, BASE	26
1	1	-	B	454708-1	HINGE BAR	25
1	1	-	B	690571-1	BLOCK, STABILIZER	24
1	1	-	C	690585-1	BLOCK, PRESSURE	23
1	1	-	A	8-22282-6	SPRING, DRAG	22
1	1	-	A	21030-6	LEVER, DRAG	21
1	1	-	A	454570-1	DRAG, STOCK	20
1	1	-	C	454573-1	GUIDE, STRIP (REAR)	19
1	1	-	C	454571-4	GUIDE, STRIP (FRONT)	18
1	-	-	A	2-22287-6	SPRING, FEED RETURN	17
-	1	-	A	4-22284-9	SPRING, FEED RETURN	16
-	1	-	A	2256119-1	SCREW, SHOULDER	15
						14
1	1	-	C	692134-4	POSITIONER, TERMINAL	13
1	1	-	A	5-22280-5	SPRING, TERM. POSITIONER	12
1	1	-	B	454712-1	PLATE, REAR SHEAR	11
1	1	-	C	454578-1	ANVIL INSERT	10
1	1	-	B	690569-3	PLATE, FRONT SHEAR	9
1	1	-	D	690718-1	ANVIL	8
1	1	-	B	454575-2	BLADE, SLUG	7
						6
1	1	-	B	684906-1	PLATE, ANVIL RETAINING	5
1	1	-	B	690574-1	SPACER, TUBULAR INSUL CRIMPER	4
1	1	-	C	690588-1	CRIMPER, INSULATION	3
						2
1	1	-	C	690716-3	CRIMPER, WIRE	1

						155
						154
						153
						152
						151
						150
						149
						148
						147
						146
						145
						144
						143
						142
						141
						140
						139
						138
						137
						136
						135
						134
						133
						132
						131
						130
						WASHER, LOCK (#6) BRACKET
						SCR, SHC (6-32X.50) BRACKET
						REVISION OF EACH ASSY NO (WHEN BLANK, USE DWG REVISION)
						REVISION OF EACH ASSY NO (WHEN BLANK, USE DWG REVISION)
						REVISION OF EACH ASSY NO (WHEN BLANK, USE DWG REVISION)
						REVISION OF EACH ASSY NO (WHEN BLANK, USE DWG REVISION)
						REVISION OF EACH ASSY NO (WHEN BLANK, USE DWG REVISION)
						REVISION OF EACH ASSY NO (WHEN BLANK, USE DWG REVISION)

DIMENSIONS IN INCHES. DO NOT SCALE PRINT.		MATERIAL		FIN	
OTHERWISE SPECIFIED:	2 PL DEC ±	DR C.ERISMAN	02NOV00	APP T.ELBIN	02NOV00
3 PL DEC ±	TE 1-06	STE Connectivity			
4 PL DEC ±	TE 11-05	Harrisburg, PA 17108-3608			
ANGLES ±	TE 10-05	NAME			
SURF TEXTURE:	TE 6-03	END FEED HINGE BAR APPLICATOR			
REMOVE BURRS, BREAK SHARP EDGES R.015 MAX	CE NOV00	MACHINE REF			
P/F LTR REVISION RECORD APP DATE	APP DATE	SCALE	DWG NO	687390	SHEET 1 OF 2

THIS DRAWING IS A CONTROLLED DOCUMENT.

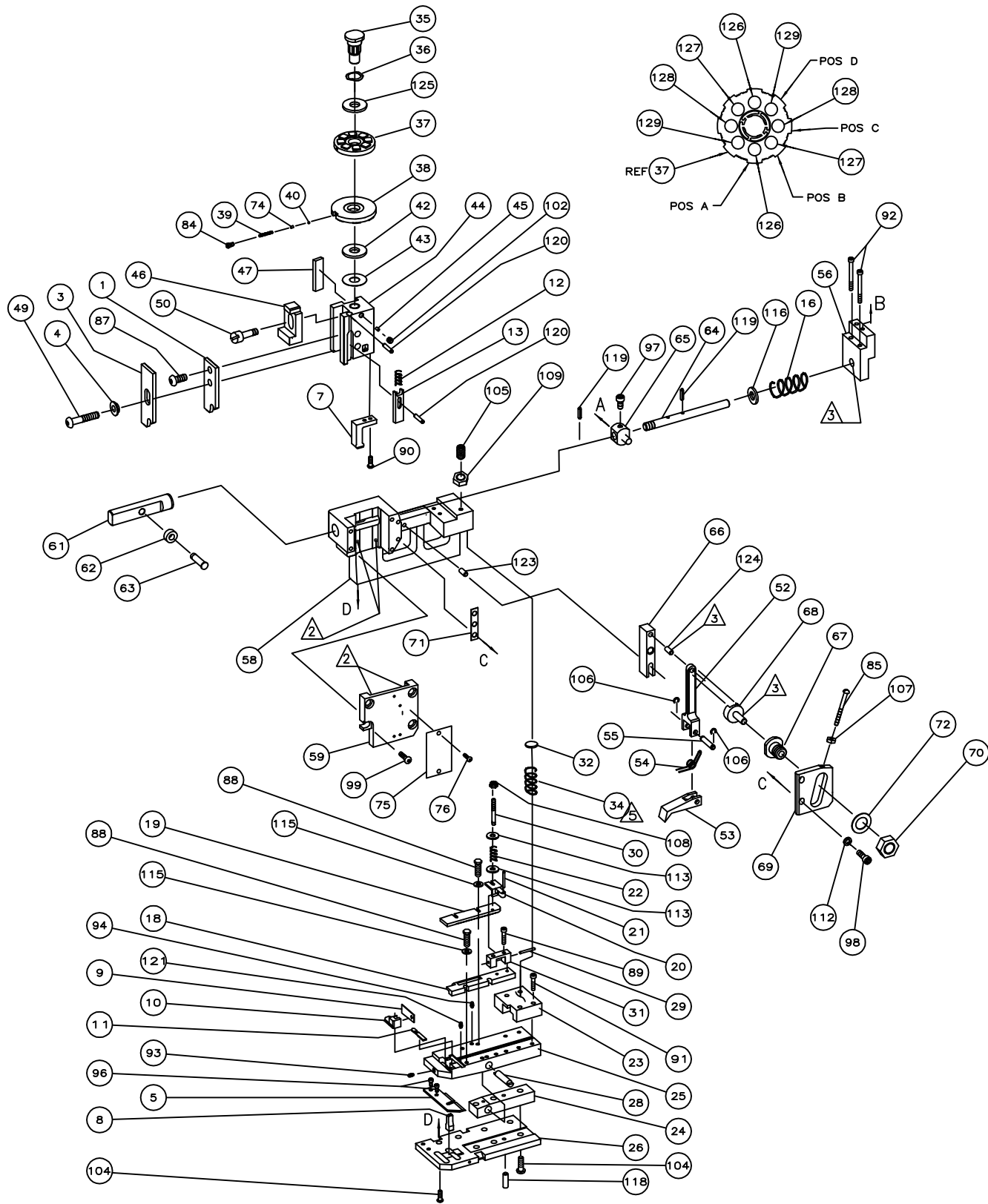
687390

LOC A DIST 66

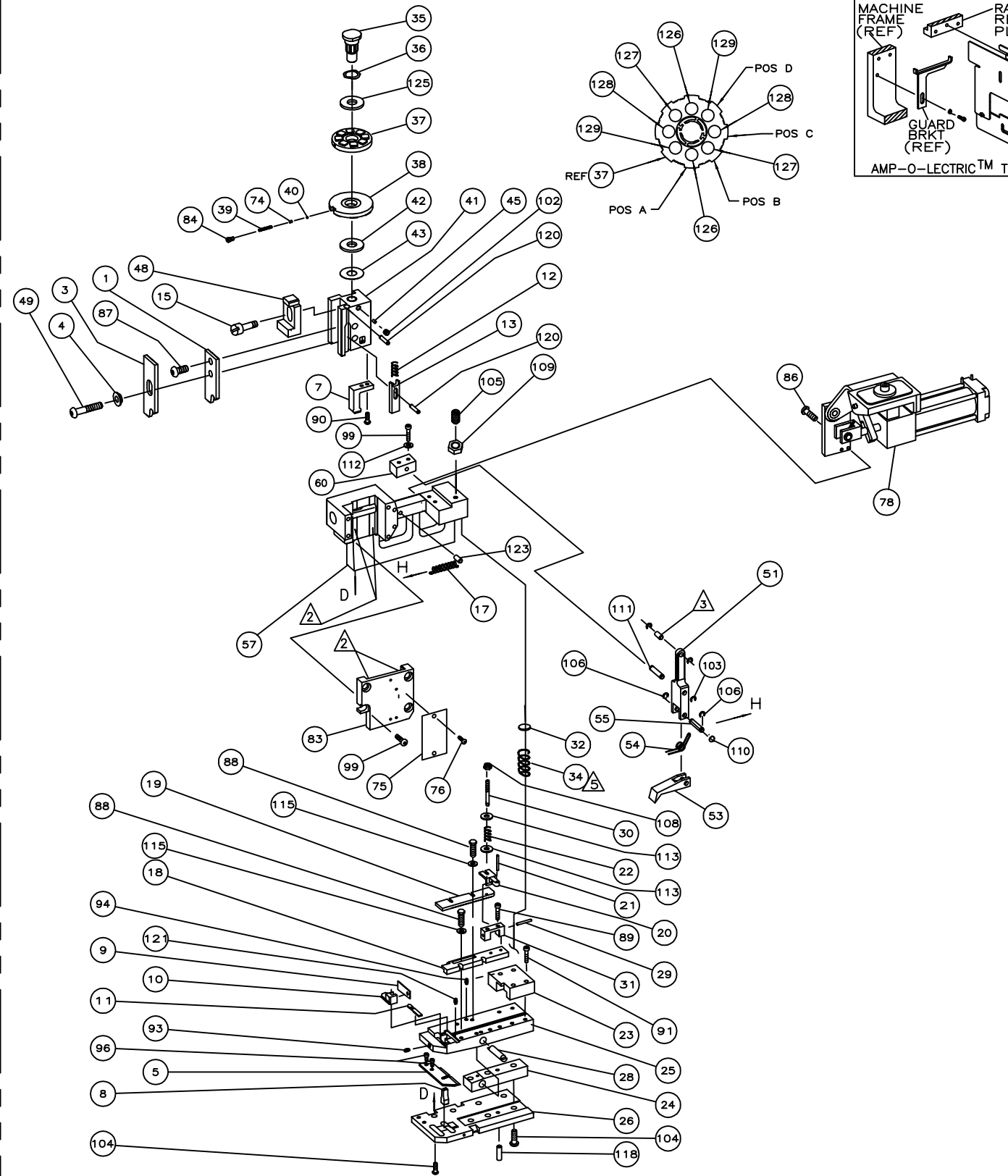
DRAWING MADE IN THIRD ANGLE PROJECTION

687390

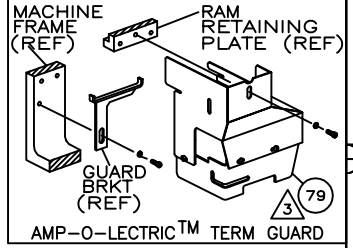
687390



-1
(MECHANICAL FEED)



-5
(AIR FEED)



687390

D

C

B

A

THIS DRAWING IS A CONTROLLED DOCUMENT.

THIS DRAWING IS UNPUBLISHED. RELEASED FOR PUBLICATION BY AMP INCORPORATED. ALL RIGHTS RESERVED. © COPYRIGHT 2000

LOC A
DIST 66

AMP 1758 REV 3-92
Copyright © 2000 AMP Incorporated
070412, 034017, 070418, 070419, 070420, 070421, 070422, 070423, 070424, 070425, 070426, 070427, 070428, 070429, 070430, 070431, 070432, 070433, 070434, 070435, 070436, 070437, 070438, 070439, 070440, 070441, 070442, 070443, 070444, 070445, 070446, 070447, 070448, 070449, 070450, 070451, 070452, 070453, 070454, 070455, 070456, 070457, 070458, 070459, 070460, 070461, 070462, 070463, 070464, 070465, 070466, 070467, 070468, 070469, 070470, 070471, 070472, 070473, 070474, 070475, 070476, 070477, 070478, 070479, 070480, 070481, 070482, 070483, 070484, 070485, 070486, 070487, 070488, 070489, 070490, 070491, 070492, 070493, 070494, 070495, 070496, 070497, 070498, 070499, 070500

SEE SHEET 1

QTY REQD PER ASSY	DWG SIZE	PART NO	DESCRIPTION	ITEM NO
REVISION OF EACH ASSY NO (WHEN BLANK, USE DWG REVISION)				
PARTS LIST				
DIMENSIONS IN INCHES. DO NOT SCALE PRINT.		MATL	HT TR	FIN
TOLERANCES UNLESS OTHERWISE SPECIFIED:		DR	APP	OGNOVOO
2 PLC DEC ±		C.ERISMAN	T.ELBIN	
3 PLC DEC ±		CHK	REL	
4 PLC DEC ±		 TE Connectivity Harrisburg, PA 17105-3808		
ANGLES ±		NAME END FEED HINGE BAR APPLICATOR		
SURF TEXTURE: REMOVE BURRS, BREAK SHARP EDGES R.015 MAX		MACHINE REF MINI-APPL		
SCALE	DWG NO	687390		SHEET 2 OF 2
CUSTOMER AND ASSEMBLY DRAWING 1				REV #

ONE CODE 00779