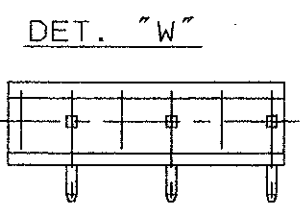


12	-	45.9	43.59	21.4	280620-1	280620-2	280620-4	280620-3
10	-	37.9	35.86	17.5	280619-1	280619-2	280619-4	280619-3
8	-	30.0	27.74	13.5	280618-1	280618-2	280618-4	280618-3
6	DET. "W"	22.1	15.85	9.5	282468-1	-	-	-
6	-	22.1	19.81	9.5	280617-1	280617-2	280617-4	280617-3
4	-	14.2	11.89	5.6	280616-1	280616-2	280616-4	280616-3
2	-	6.2	3.96	1.6	280615-1	280615-2	280615-4	280615-3
N° POS.	POS. MANCANTI RIF. A DET. UNLOADED POS. REF. TO DETAIL	DIM. "A"	DIM. "B"	DIM. "C"	P.N. STAGNATO (TIN PLTD. VERSION)	DORATO 0.37µm AREA CONTATTO STAGNATO NELLA ZONA A SALDARE 0.37µm GOLD PLTD ON CONTACT AREA TIN PLTD ON SOLDER TAIL	DORATO 0.76µm AREA CONTATTO STAGNATO NELLA ZONA A SALDARE 0.76µm GOLD PLTD ON CONTACT AREA TIN PLTD ON SOLDER TAIL	DORATO 1.27µm AREA CONTATTO STAGNATO NELLA ZONA A SALDARE 1.27µm GOLD PLTD ON CONTACT AREA TIN PLTD ON SOLDER TAIL

DET. VIEWS FROM "D"



- ① EVENTUALE POSIZIONE DEI CONTATTI MANCANTI, VEDERE DETTAGLI (POSITIONS OF UNLOADED CONTACTS , SEE DETAILS)
- ② TOLLERANZA NON CUMULATIVA (NOT CUMULATIVE TOLERANCE)
- ③ ALLA BASE (AT BASE)
- ④ DIMENSIONE MISURATA ALLA BASE DEI POSTS (POSTS BASE DIMENSION)
- ⑤ NOT IN PRODUCTION
- ⑥ P/N OBSOLETO (OBSOLETE P/N)
- ⑦ PER VERSIONI CARICATE PARZIALMENTE LA DIMENSIONE "B" E' MISURATA TRA IL PRIMO E L'ULTIMO CONTATTO DISPONIBILE (FOR PARTIALLY LOADED VERSION , DIM "B" IS MEASURED BETWEEN FIRST AND LAST AVAILABLE CONTACT)

- ⑧ SUPERSEDED
 280615-3 SUPERSEDED BY 280615-2
 280616-3 SUPERSEDED BY 280616-2
- ⑨ OBSOLETE PARTS: OBSOLETE CIS STREAMLINING PER D.RENAUD/D.SINISI
- ⑩ OBSOLETE

CONTATTI: (CONTACTS) OTTONE (BRASS)

BLOCCETTO: (HOUSING) POLICARBONATO CARICATO VETRO COLORE VERDE (POLYCARBONATE GLAS FIBER FILLED COLOUR GREEN)

MATERIALE (MATERIAL)

CUSTOMER DRAWING FOR REFERENCE ONLY / DISEGNO PER CLIENTE SOLO PER RIFERIMENTO

THIS DRAWING IS UNPUBLISHED / RELEASE FOR PUBLICATION 19

© COPYRIGHT 19 BY TE INCORPORATED, HARRISBURG, PA. ALL INTERNATIONAL RIGHT RESERVED. TE PRODUCTS MAY BE COVERED BY U.S. AND FOREIGN PATENT AND/OR PATENT PENDING

TOLLERANZE, SE NON DIVERSAMENTE SPECIFICATO (TOLERANCES, UNLESS OTHERWISE SPECIFIED)

± 0.4

ANGOLI (ANGLES) ± 2°

DESCRIZIONE (DESCRIPTION) AMP-MODU MOD. I RIGHT ANGLE POST SUPPORT ASS Y

LOC. SIZE NUMERO (DWG NO) I A3 C-280615

REV. FOGLIO (SHEET) 1 DI (OF) 1

T	STREAMLINING OF CONTACT BASE MATERIAL CHANGED TO BRASS	SMT	09APR 2013
S2	ECR-10-022530	KK	20MAY11
S1	REVISED PER ECO-09-021826	KK	JAN10
S	OBSOLETE P/N's ET00-0244-97	F.B.	20NOV 97
R	OBSOLETE P/N's 280615-3 AND 280616-3 (ET00-478-96)	C.P.	14 Nov '96
P	REV. PER EC ET00-0030 -94	C.C.	FEB 94
N	P.N. 282468-1 WAS IA92-S1085	C.C.	10-92
M	ADDED IA92-S1085 CANCELLED 15 POS. PROPOSAL REDRAWN	C.C.	3-92
L	ADDED 0.76µGOLD VERSION	A.B.	6-85
J	ADDED P.C.B. LAYOUT	Z.R.	1-83
H	ADDED FINISH NOTE	A.B.	10-82
E	ADDED DASH 3	R.G.	9-78
REV.	REVISIONI (REVISION RECORD)	DIS. DATA (DR) (DATE)	APP. (APP.)

DISTRIBUZIONE (PRINT DIST.)