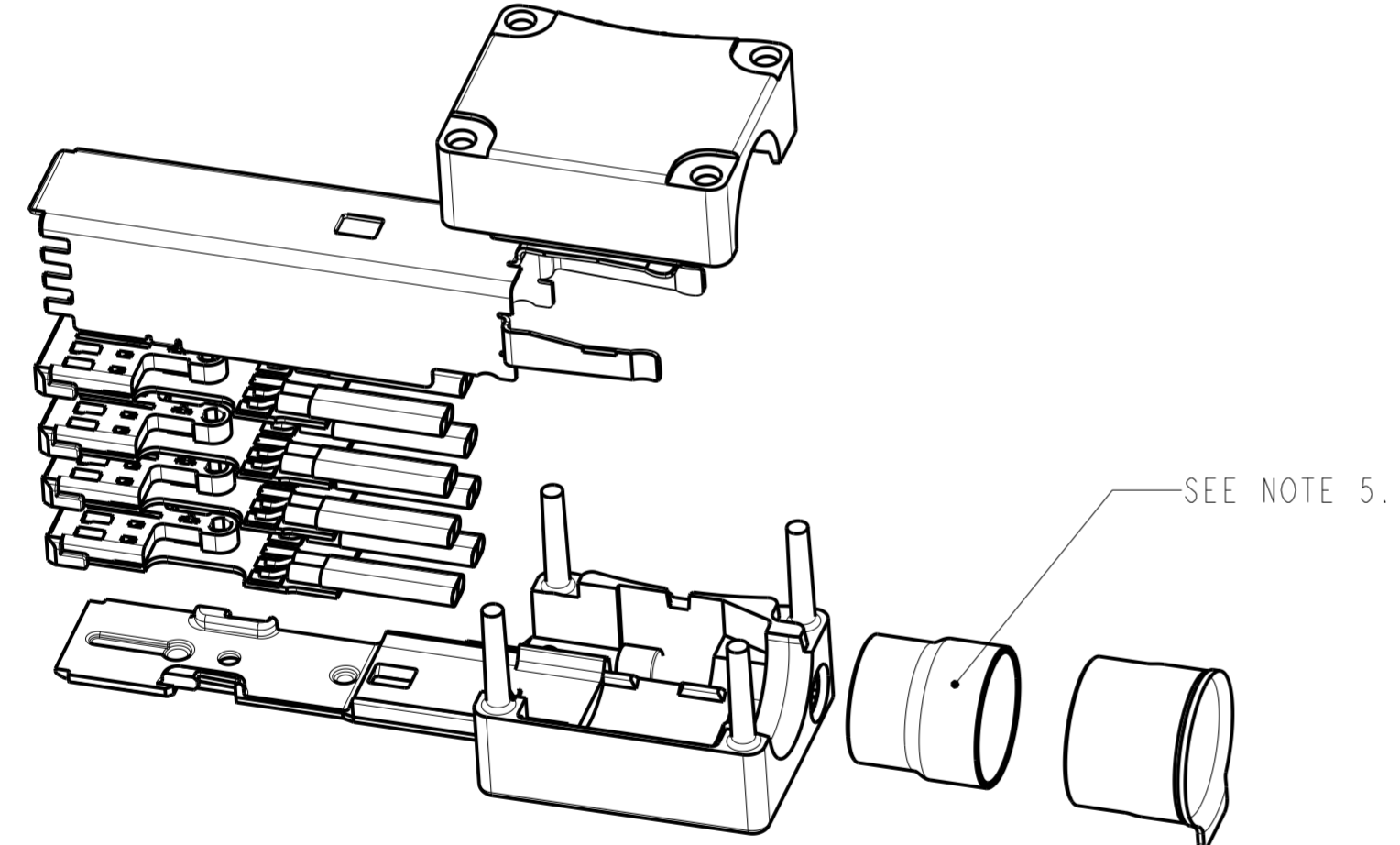


PART NUMBERING	QUANTITY OF TERMINAL BLOCKS:				MI.6 LOCKING SCREW -PRE-ASSEMBLED IN LOWER COVER.	Sheetmetal Cover 10039720-002	Sheetmetal Cover 10039720-003	MAXIMUM CABLE SIZE: SEE NOTE 5
	HIGH SPEED VERSION	STANDARD VERSION	HOUSING SPACER SEE NOTE 4					
10044473-101111LF	4	0	0	TORX T5-DIN912		-	Ø 8.1	
10044473-102111LF	0	4	0	TORX T5-DIN912		-	Ø 8.1	
10044473-103111LF	0	2	2	TORX T5-DIN912		-	Ø 8.1	
10044473-101121LF	4	0	0	TORX T5-DIN912		-	Ø 5.4	
10044473-102121LF	0	4	0	TORX T5-DIN912		-	Ø 5.4	
10044473-103121LF	0	2	2	TORX T5-DIN912		-	Ø 5.4	
10044473-101112LF	4	0	0	THUMBSCREW		-	Ø 8.1	
10044473-102112LF	0	4	0	THUMBSCREW		-	Ø 8.1	
10044473-101122LF	4	0	0	THUMBSCREW		-	Ø 5.4	
10044473-101113LF	4	0	0	HEXAGON SCREW		-	Ø 8.1	
10044473-101213LF	4	0	0	HEXAGON SCREW	-		Ø 8.1	

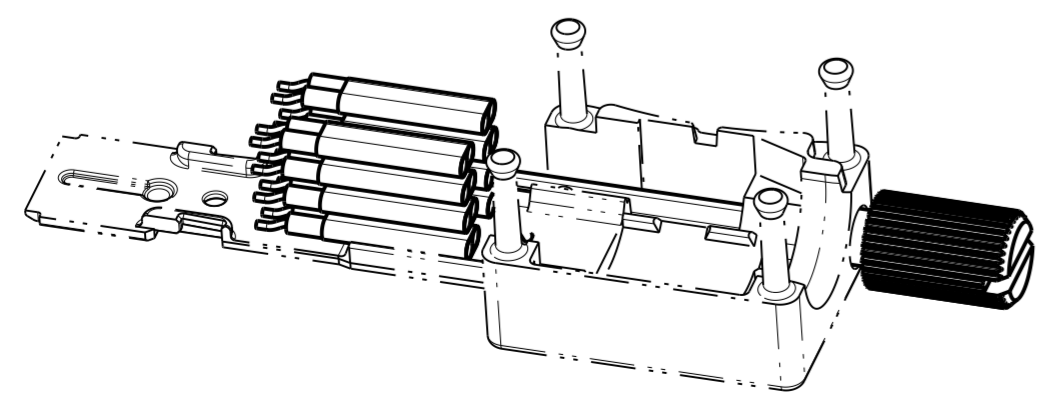


**TORX VERSION OR HEXAGON SCREW VERSION:**



**OR**

**THUMBSCREW VERSION:**



- NOTES:
- MATES WITH FCI PLUG CONNECTOR: 10044471 SERIES.
  - MATERIALS:  
LOWER- AND UPPER COVER - ZINC ALLOY, Cu-Ni-Sn PLATED.  
SHEETMETAL COVER - COPPER ALLOY(10039720-002) OR STAINLESS STEEL(10039720-003).  
FERRULES: COPPER ALLOY, Ni-Sn PLATED.  
TERMINAL BLOCK:  
- HOUSING - THERMOPLASTIC.  
- TERMINALS - COPPER ALLOY; FINISH: PALLADIUM-NICKEL ALLOY WITH GOLD OVERPLATING Ni-UNDERLAYER IN CONTACT AREA.  
- TRANSITION BOARD - FR4 FIBERGLASS FILLED EPOXY.  
- LOCKING SCREW - STAINLESS STEEL.  
- SCREW STOP - TEFLON
  - REFER TO FCI APPLICATION SPECIFICATION GS-20-047 FOR ASSEMBLY INSTRUCTIONS.}
  - HOUSING SPACERS ARE TO BE FITTED ONLY IN COLUMNS 2,3 OR 4.
  - INNER FERRULE TO SUIT CABLE OUTER DIAMETER.
  - FCI PRODUCT SPECIFICATION GS-12-314.
  - THIS PRODUCT MEETS EUROPEAN UNION DIRECTIVES AND OTHER COUNTRY REGULATIONS}
  - AS DISCRIBED IN GS-22-008.
  - A SYMBOL WILL BE NEXT TO ANY DIMENSION, VIEW, OR NOTE WHICH HAS BEEN MODIFIED WITH THE CURRENT DRAWING REVISION

rev	ecn no	dr	date
H	DG-17085	DF	2014-03-03
-	-	-	-
C	H06-0003	PEP	060124
D	H06-0139	PEP	061113
E	DG07-0077	CLU	070308
F	DG07-0253	CLU	070621
G	DG07-0257	CLU	070622

spec ref	dr	Terran Huang	2010/10/29	projection	mm	size	A2	scale	1:1
tolerance std	eng	David Guo	2022/06/09		mm	ecn no	ELX-DG-44989-1		
ISO 406	chr	-	-			rel level	Released		
ISO 1101	appr	Heaven Cen	2022/06/20	product family					
surface	linear	TOLERANCES UNLESS OTHERWISE SPECIFIED		Amphenol FCI		CABLE CONNECTOR KIT		cat. no.	Product - Customer Drw
	angular	0.X	±0.30	DENSII-SHIELD I/O 8pair		10044473			
		0.XX	±0.20						
		0.XXX	±0.10						
		0°	±2°						

© 2020 Amphenol Corporation

Creo File:ELX-NC-ADC\_REV F\_2020-12-21

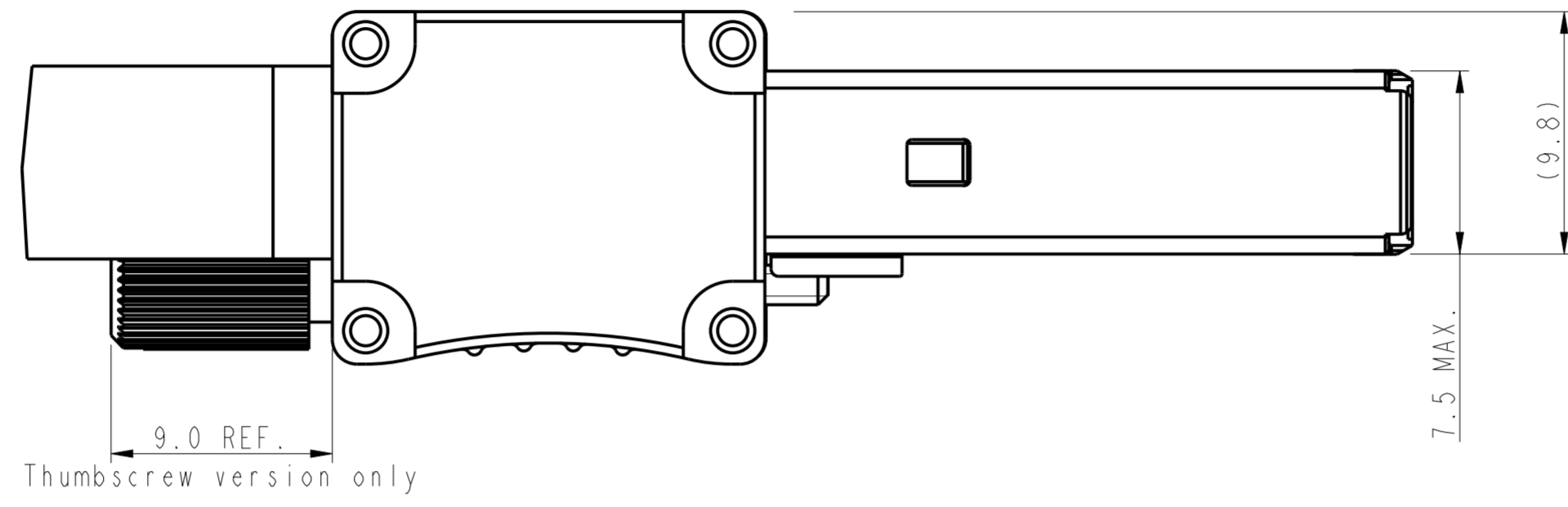
1 2 3 4 5 6 7 8

A

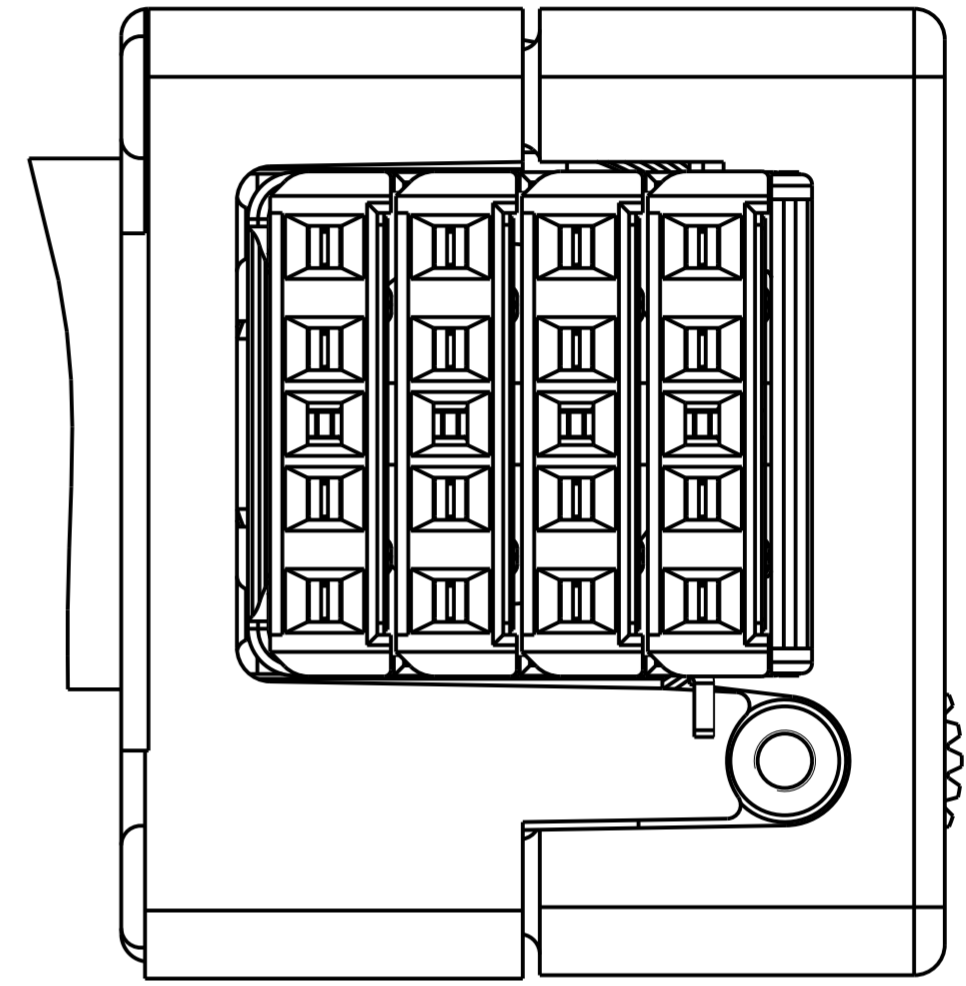
PIN NUMBERING SEEN FROM MATING SIDE:

B

COLUMN NO:  
4 3 2 1



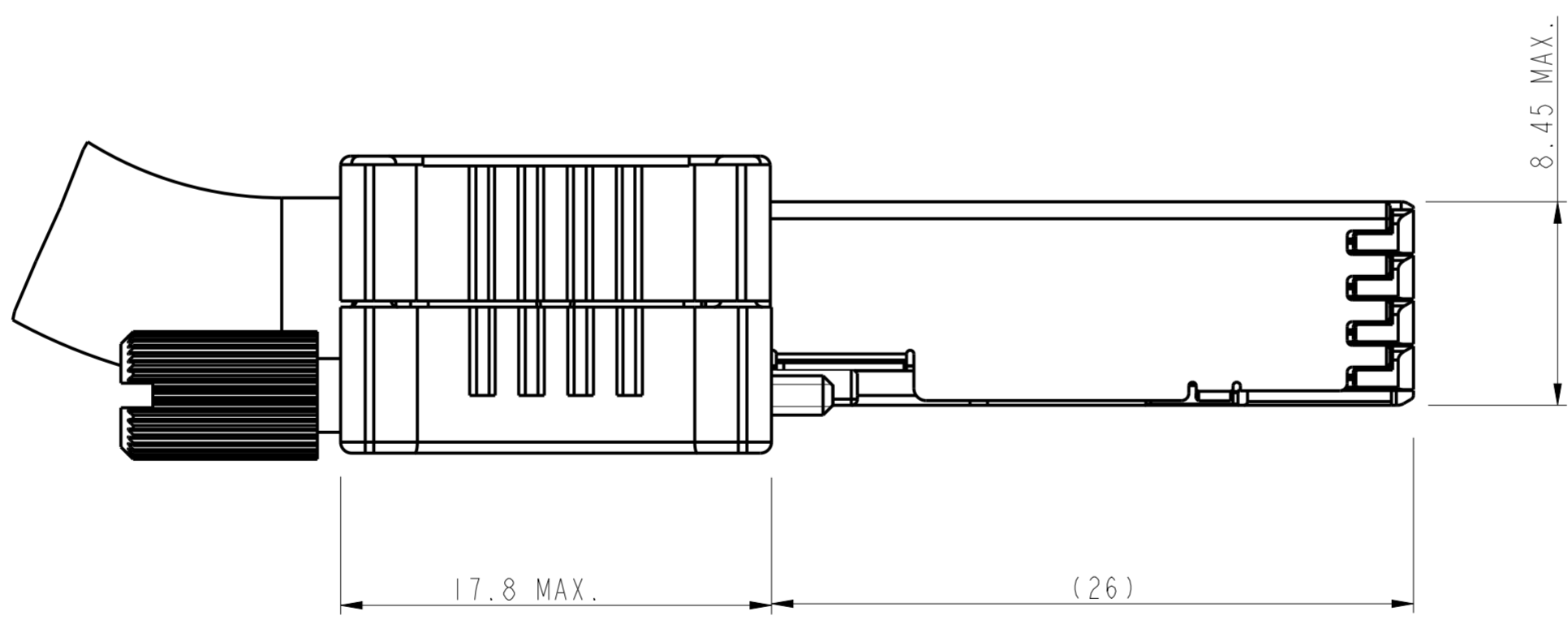
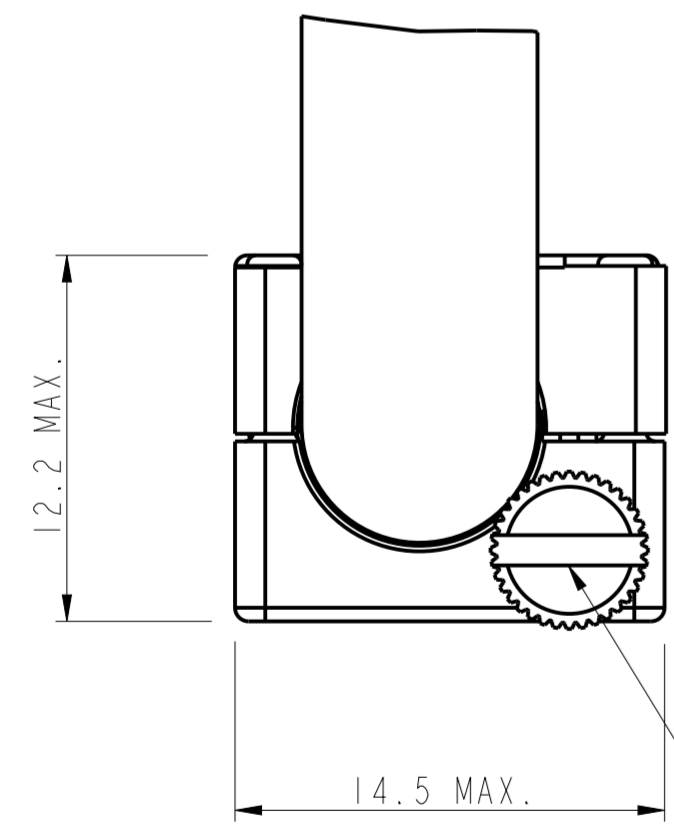
ROW:  
E  
D  
C (GND)  
B  
A



C

Amphenol  
FCi

D



LOCKING-SCREW  
DIN 912 T5  
OR THUMBSCREW  
OR HEXAGON SCREW  
THE MAX TIGHTENING TORQUE IS 0.15Nm

E

© 2020 Amphenol Corporation

F

spec ref	dr	Terran Huang	2010/10/29	projection	mm	size	A2	scale	4:1
tolerance std	eng	David Guo	2022/06/09			ecn no	ELX-DG-44989-1		
ISO 406	chr	-	rel level			Released			
ISO 1101	appr	Heaven Cen	2022/06/20	product family					
TOLERANCES UNLESS OTHERWISE SPECIFIED		Amphenol FCI		CABLE CONNECTOR KIT		10044473		K	
surface	linear	0.X	±0.30	DENS1-SHIELD I/O 8pair		Product - Customer Drw		sheet 2 of 2	
ISO 1302	0.XX	±0.20	0.XXX	±0.10					
	angular	0°	±2°						

1 2 3 4 5 6 7 8