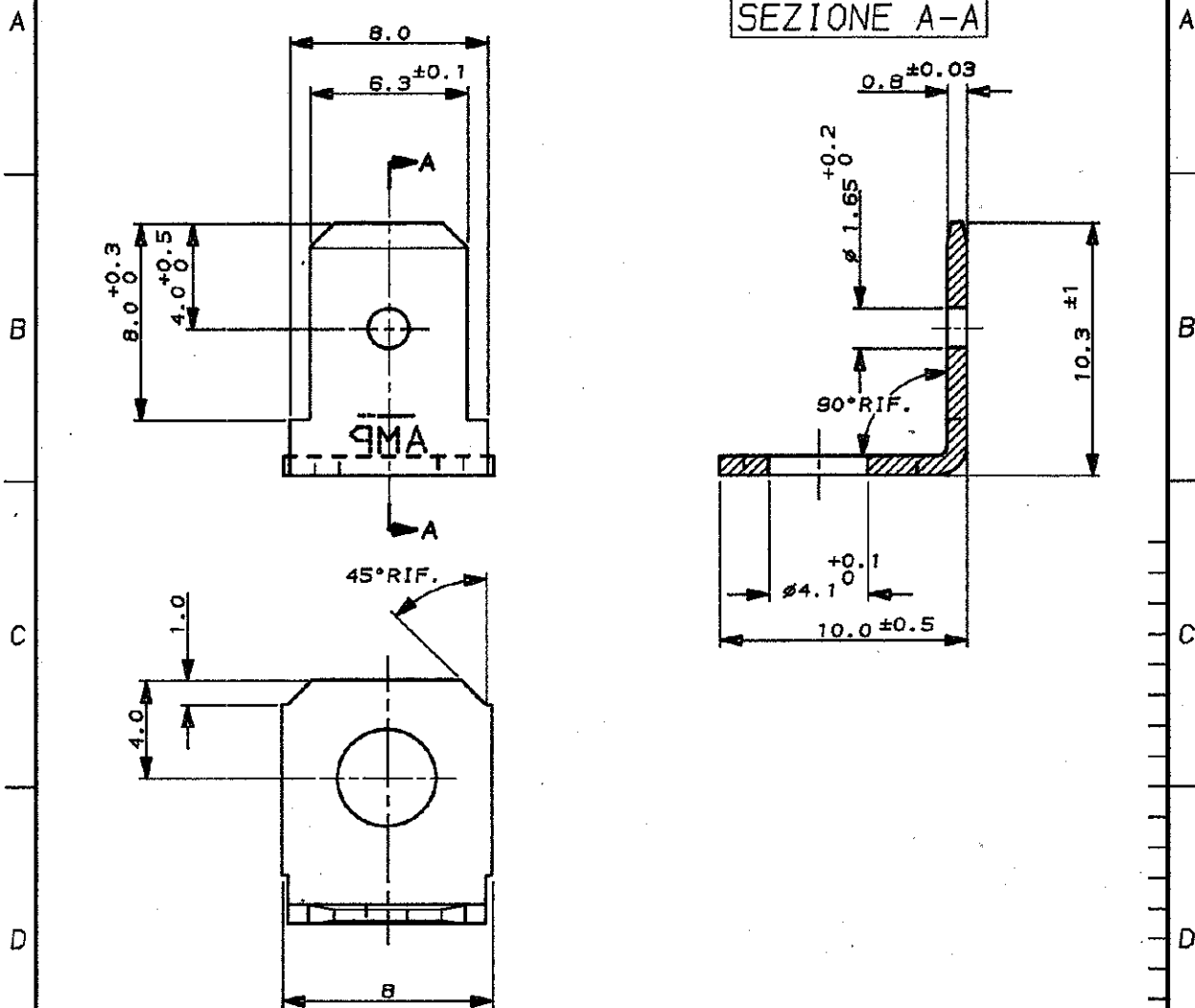


SCALA NON IMPEGNATIVA  
(DO NOT SCALE)  
DIMENSIONI IN mm  
(DIMENSIONS IN mm)

METRIC

PROIEZIONE EUROPEA  
(EUROPEAN PROJECTION)



STAGNATO 2µm min.	OTTONE	181953-2
NUDO		181953-1
FINITURA / COLORE (FINISH / COLOUR)	MATERIALE (MATERIAL)	NUMERO (PART NUMBER)

CUSTOMER DWG. FOR REFERENCE ONLY      DISEGNO PER CLIENTE SOLO PER RIFERIMENTO

© COPYRIGHT 1990 BY AMP INCORPORATED, HARRISBURG, PA. ALL INTERNATIONAL RIGHT RESERVED. AMP PRODUCTS MAY BE COVERED BY U.S. AND FOREIGN PATENT AND/OR PATENT PENDING

TOLLERANZE, SE NON DIVERSAMENTE SPECIFICATO (TOLERANCES, UNLESS OTHERWISE SPECIFIED)	DIAM. ISOLANTE (INS. DIA. RANGE)	RANGO FILE (WIRE RANGE)	SCALA (SCALE)
± 0.3	-	-	4:1

ANGOLI  
(ANGLES) ± 2°

**AMP** AMP ITALIA S.p.A.  
Corso F.lli Cervi, 15  
COLLENO (TORINO)

DIS. Bassano (GR.) 14 NOV. 90

DESCRIZIONE  
(DESCRIPTION) FASTON TAB 6.35mm  
(.250") Srs. SINGLE BENT 90° VERSION

CONT. ---  
CONC. ---

LOC. SIZE NUMERO  
(CASE NO.)

APP. ---  
(APP.)

REV. POS. 10  
(REV.) (SHEET)

REV. 1	RIVISTO E RIDISEGNATO	-	-
REVISIONI (REVISION RECORD)		DIS. DATA (DATE)	DATE

DISTRIBUZIONE  
(PRINT DIST.)