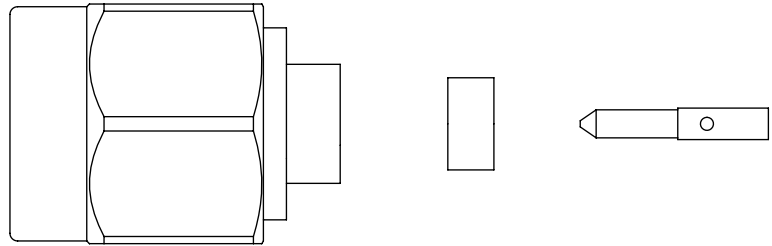
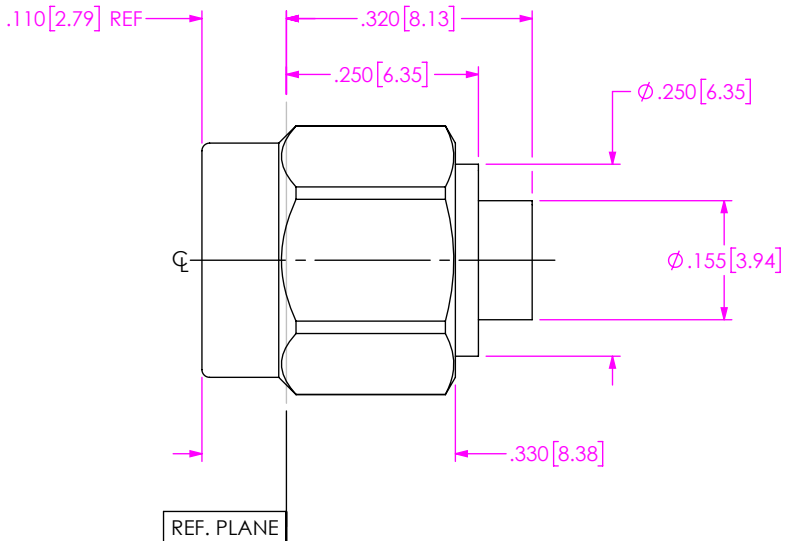


DO NOT SCALE FROM THIS PRINT

DESIGNED & DIMENSIONED IN INCHES[MILLIMETERS]



EXPLODED VIEW  
NOT TO SCALE  
(FOR CLARITY ONLY)

**PRF92-P-C-EE-118-SD**

**SERIES**  
-92: 2.92mm

**GENDER**  
-P: PLUG

**TYPE**  
-C: CABLE

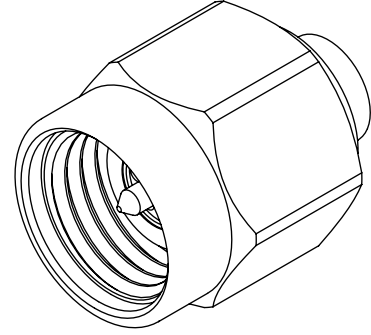
**FINISH**  
-EE: 50µ" EXTRA HEAVY GOLD CENTER CONTACT, 50µ" EXTRA HEAVY GOLD OUTER CONTACT

**TERMINATION**  
-D: DIRECT SOLDER

**ORIENTATION**  
-S: STRAIGHT

**CABLE TYPE**  
-118: .118" SEMI-RIGID CABLE


-118: CABLE (118)



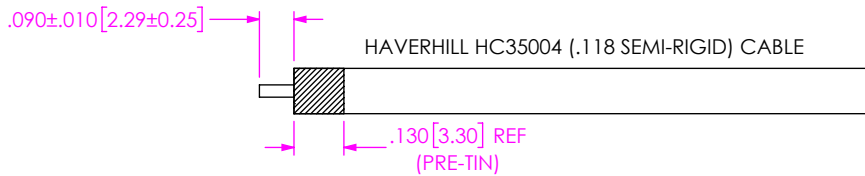
NOTES:

- MATERIAL:**  
COUPLING NUT: STAINLESS STEEL  
BODY, CONTACT, LOCK RING: BERYLLIUM COPPER  
BEAD: PPE  
GASKET: SILICONE RUBBER
- FINISH:**  
COUPLING NUT: PASSIVATED  
BODY, CONTACT: 50µ" MIN. GOLD OVER 50µ" MIN. NICKEL PLATE
- PCI P/N: 3811

F:\DWG\MISC\MKTG\PRF92-P-C-EE-118-SD-MKT.SLDDRW

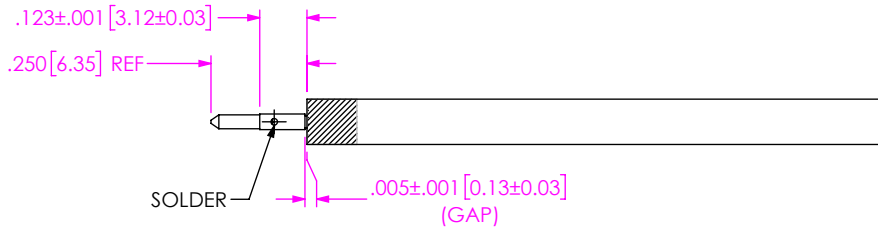
UNLESS OTHERWISE SPECIFIED, DIMENSIONS ARE IN INCHES. TOLERANCES ARE: DECIMALS      ANGLES .XX: ±.02[0.5]      1° .XXX: ±.005[0.13] .XXXX: ±.0005[0.013]	* <b>PROPRIETARY NOTE</b> * THIS DOCUMENT CONTAINS CONFIDENTIAL AND PROPRIETARY INFORMATION AND ALL DESIGN, MANUFACTURING, REPRODUCTION, USE, PATENT RIGHTS AND SALES RIGHTS ARE EXPRESSLY RESERVED BY SAMTEC, INC. THIS DOCUMENT SHALL NOT BE DISCLOSED, IN WHOLE OR PART, TO ANY UNAUTHORIZED PERSON OR ENTITY NOR REPRODUCED, TRANSFERRED OR INCORPORATED IN ANY OTHER PROJECT IN ANY MANNER WITHOUT THE EXPRESS WRITTEN CONSENT OF SAMTEC, INC.	 520 PARK EAST BLVD., NEW ALBANY, IN 47150 PHONE: 812-944-6733      FAX: 812-948-5047 e-Mail: info@SAMTEC.com      code 55322	
		DO NOT SCALE DRAWING      SHEET SCALE: 4:1	DESCRIPTION: 2.92 MM PLUG DIRECT SOLDER FOR HAVERHILL HC35004 (.118) SEMI-RIGID CABLE
		DWG. NO. <b>PRF92-P-C-EE-118-SD</b>	
		BY: FABIAN F. 05/20/2019	SHEET 1 OF 4

# CABLE APPLICATION VIEWS



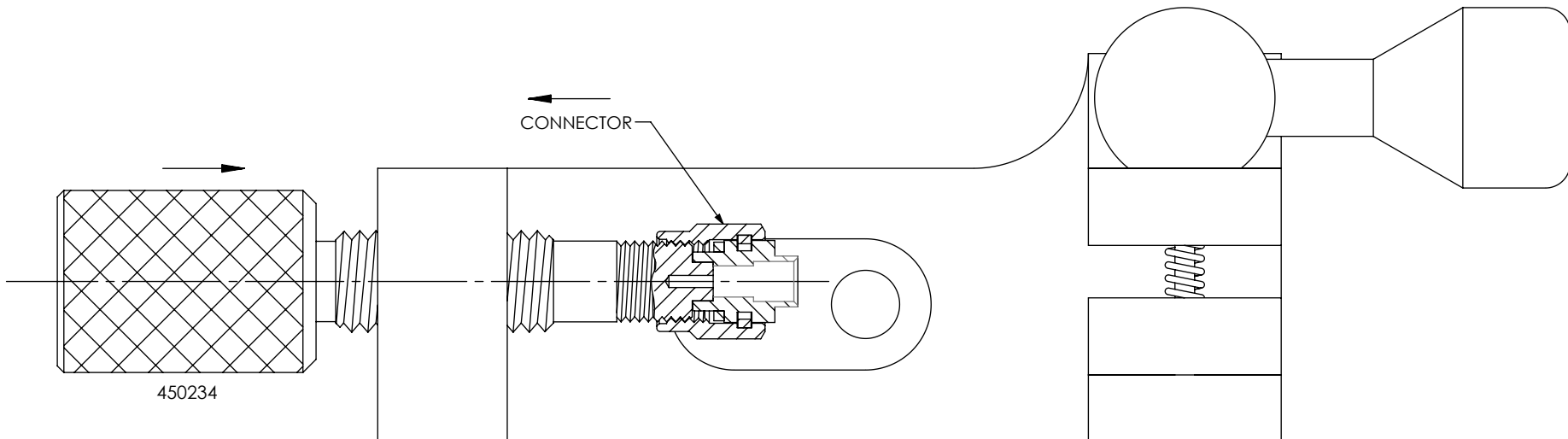
IN-PROCESS VIEW 1

- 1A. TRIM CABLE JACKET & DIELECTRIC TO EXPOSE CENTER CONDUCTOR AS SHOWN (DO NOT NICK CENTER CONDUCTOR).
- 1B. PRE-TIN CABLE JACKET TO THE APPROXIMATE LENGTH SHOWN.



IN-PROCESS VIEW 2

- 2A. PRE-TIN CABLE CENTER CONDUCTOR AND SOLDER ON CONTACT WITH GAP INDICATED.



IN-PROCESS VIEW 3

- 3A. THREAD PCI ASSEMBLY TOOL 450234 INTO SUHNER BASE. THEN THREAD CONNECTOR BODY ONTO PCI TOOL UNTIL SEATED.

**PROPRIETARY NOTE**  
 THIS DOCUMENT CONTAINS CONFIDENTIAL AND PROPRIETARY INFORMATION AND ALL DESIGN, MANUFACTURING, REPRODUCTION, USE, PATENT RIGHTS AND SALES RIGHTS ARE EXPRESSLY RESERVED BY SAMTEC, INC. THIS DOCUMENT SHALL NOT BE DISCLOSED, IN WHOLE OR PART, TO ANY UNAUTHORIZED PERSON OR ENTITY NOR REPRODUCED, TRANSFERRED OR INCORPORATED IN ANY OTHER PROJECT IN ANY MANNER WITHOUT THE EXPRESS WRITTEN CONSENT OF SAMTEC, INC.



520 PARK EAST BLVD, NEW ALBANY, IN 47150  
 PHONE: 812-944-6733 FAX: 812-948-5047  
 e-Mail info@SAMTEC.com code 55322

DO NOT SCALE DRAWING

SHEET SCALE: 2:1

DESCRIPTION: 2.92 MM PLUG DIRECT SOLDER FOR HAVERHILL HC35004 (.118) SEMI-RIGID CABLE

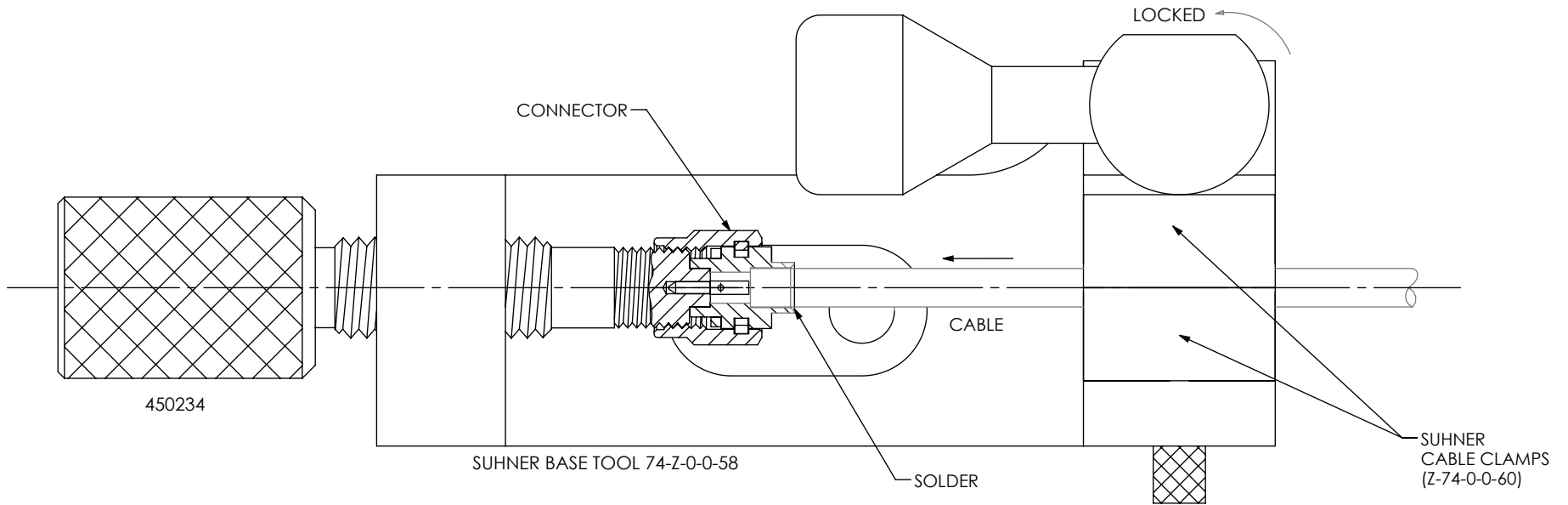
DWG. NO. PRF92-P-C-EE-118-SD

BY: FABIAN F. 05/20/2019 SHEET 2 OF 4

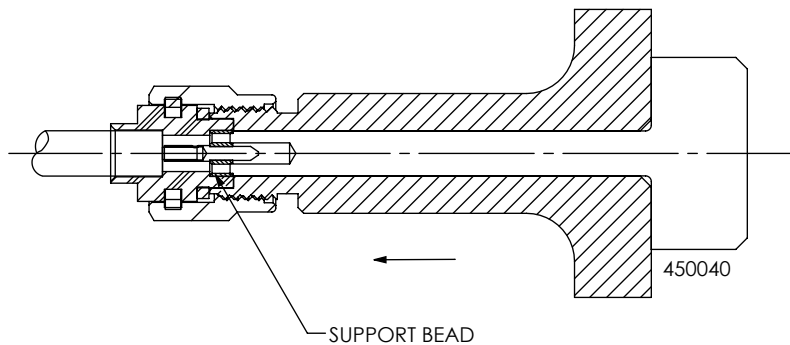
# CABLE APPLICATION VIEWS

4A. SLIDE PREPARED CABLE THROUGH CABLE CLAMP BLOCKS AND INSERT CABLE INTO CONNECTOR BACK END UNTIL FULLY SEATED. THEN LOCK CABLE IN PLACE BY ROTATING LEVER ARM.

4B. HEAT CONNECTOR BODY BACK END AND REFLOW SOLDER CABLE TO CONNECTOR.  
 4C. FLOW ADDITIONAL SOLDER AT REAR OF BODY WHERE INDICATED IF NECESSARY.



IN-PROCESS VIEW 4



5. REMOVE CONNECTOR FROM SUHNER BASE TOOL AND INSTALL DIELECTRIC SUPPORT BEAD USING PCI TOOL SET 450040

IN-PROCESS VIEW 5

**PROPRIETARY NOTE**  
 THIS DOCUMENT CONTAINS CONFIDENTIAL AND PROPRIETARY INFORMATION AND ALL DESIGN, MANUFACTURING, REPRODUCTION, USE, PATENT RIGHTS AND SALES RIGHTS ARE EXPRESSLY RESERVED BY SAMTEC, INC. THIS DOCUMENT SHALL NOT BE DISCLOSED, IN WHOLE OR PART, TO ANY UNAUTHORIZED PERSON OR ENTITY NOR REPRODUCED, TRANSFERRED OR INCORPORATED IN ANY OTHER PROJECT IN ANY MANNER WITHOUT THE EXPRESS WRITTEN CONSENT OF SAMTEC, INC.



520 PARK EAST BLVD, NEW ALBANY, IN 47150  
 PHONE: 812-944-6733 FAX: 812-948-5047  
 e-Mail info@SAMTEC.com code 55322

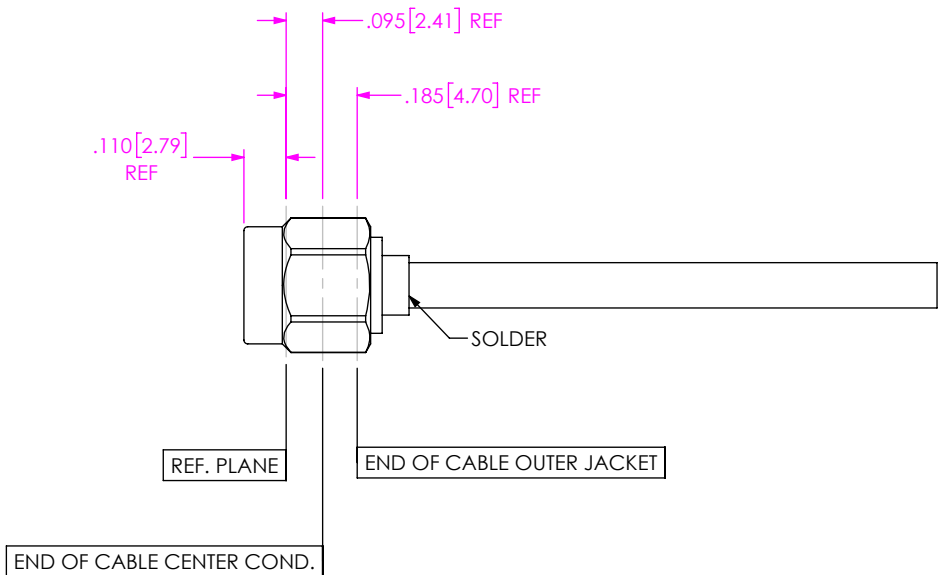
DO NOT SCALE DRAWING

SHEET SCALE: 2:1

DESCRIPTION: 2.92 MM PLUG DIRECT SOLDER FOR HAVERHILL HC35004 (.118) SEMI-RIGID CABLE


DWG. NO. PRF92-P-C-EE-118-SD

BY: FABIAN F. 05/20/2019 SHEET 3 OF 4



6. INSPECT INTERFACE INSULATION RECESSON USING THE APPROPRIATE GAGES. SUPPORT BEAD INNER AND OUTER SURFACES TO BE SUB-FLUSH WITH BODY REFERENCE PLANE.

IN-PROCESS VIEW 6

<p><b>PROPRIETARY NOTE</b></p> <p>THIS DOCUMENT CONTAINS CONFIDENTIAL AND PROPRIETARY INFORMATION AND ALL DESIGN, MANUFACTURING, REPRODUCTION, USE, PATENT RIGHTS AND SALES RIGHTS ARE EXPRESSLY RESERVED BY SAMTEC, INC. THIS DOCUMENT SHALL NOT BE DISCLOSED, IN WHOLE OR PART, TO ANY UNAUTHORIZED PERSON OR ENTITY NOR REPRODUCED, TRANSFERRED OR INCORPORATED IN ANY OTHER PROJECT IN ANY MANNER WITHOUT THE EXPRESS WRITTEN CONSENT OF SAMTEC, INC.</p>	 <p>520 PARK EAST BLVD. NEW ALBANY, IN 47150          PHONE: 812-944-6733 FAX: 812-948-5047          e-Mail info@SAMTEC.com code 55322</p>
<p>DO NOT SCALE DRAWING</p>	<p>DESCRIPTION: 2.92 MM PLUG DIRECT SOLDER FOR HAVERHILL HC35004 (.118) SEMI-RIGID CABLE</p>
<p>SHEET SCALE: 2:1</p>	<p>DWG. NO. PRF92-P-C-EE-118-SD</p>
	<p>BY: FABIAN F. 05/20/2019 SHEET 4 OF 4</p>