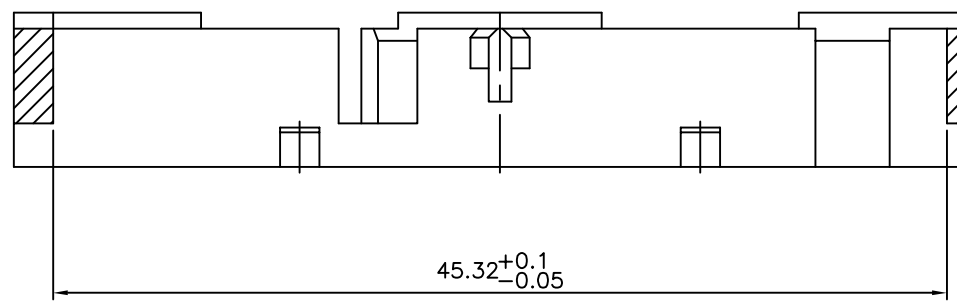
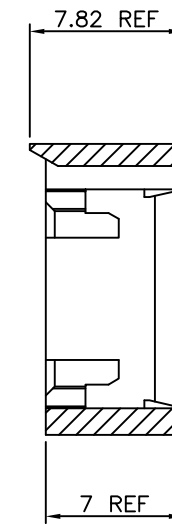
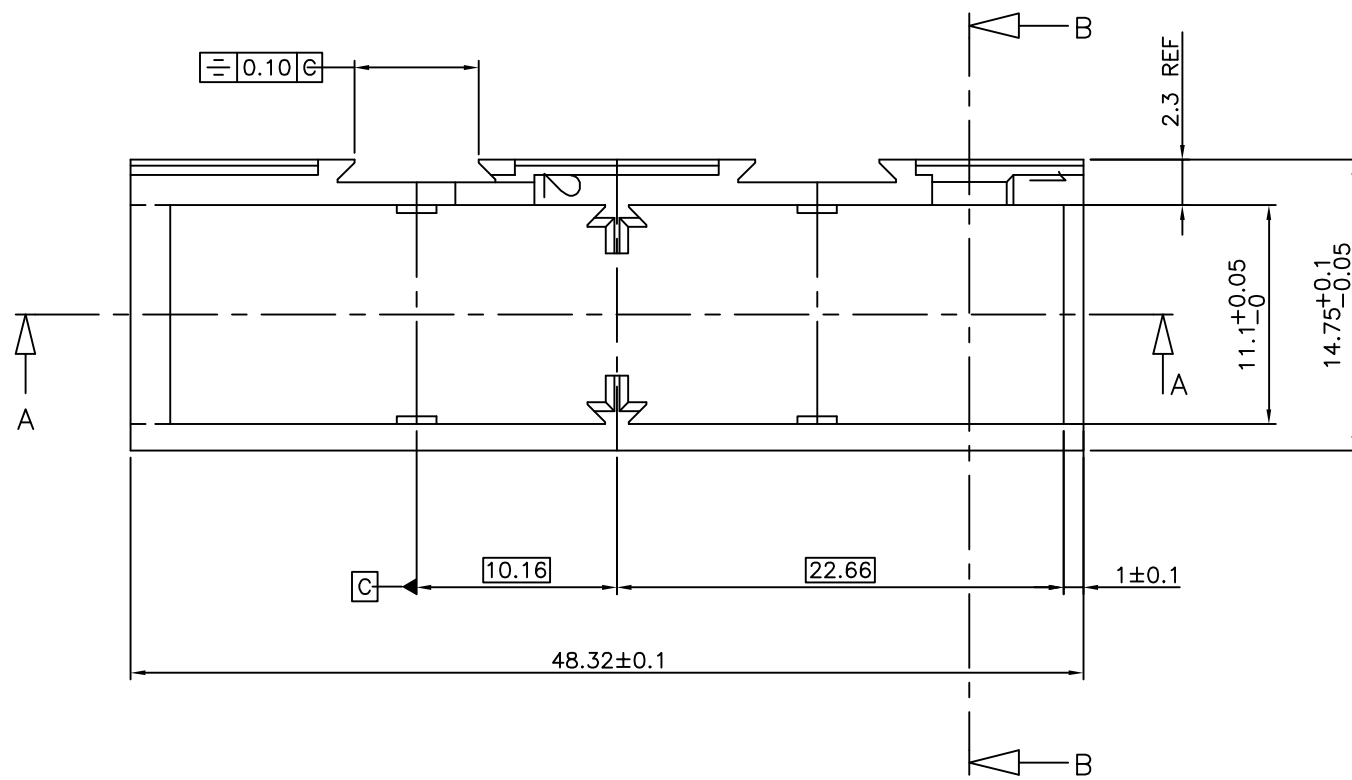


PRODUCT NUMBER	COLOR	REMARK
65185-001	BLACK	SEE NOTE
65185-002	GREY	SEE NOTE



SECTION A-A

NOTES:-

1. THIS PRODUCT MEETS EUROPEAN UNION DIRECTIVES AND OTHER COUNTRY REGULATIONS AS DESCRIBED IN GS-22-008.
2. LEADFREE OR RoHS DIRECTIVE LABELLING TO BE PROVIDED AS PER GS-14-920.
3. " LF " SUFFIX TO PRODUCT NUMBER FOR RoHS COMPATIBLE/ LEADFREE VERSION.
4. PARTS WITH AND WITHOUT "LF " SUFFIX ARE FORM-FIT AND FUNCTIONALLY IDENTICAL. " LF " SUFFIX PROVIDED FOR PART NUMBER STANDARDISATION OF PART THAT MEETS RoHS REQUIREMENTS.

NOTE:  
MATERIAL: MODIFIED POLYPHENYLENE OXYDE  
FLAME RETARDANT PER UL 94 V1  
COLOR: BLACK OR GREY.

mat'l. code		surface		tolerance		projection		product family	
SEE NOTE		ISO 1302		ISO 406 ISO 1101		mm		BACKPANEL	
ltr	ecn no	dr	date	tolerances unless otherwise specified		mm		title	
D	F00406	LLA	2000-05-22	angles	linear	mm		LOCKING FRAME	
E	F10138	GCO	2001-02-08			mm		2 MODULES	
F	I05-0042	MINI	2005-03-17			scale -			
G	I05-0248	MINI	2005-11-22	dr	G.CORBOZ	2001-02-08		dwg no	
H	I06-0068	MINI	2006-06-01	enr	J.F.NOTTEAU	2001-02-08		sheet 1 of 1	
				chr	RAKHEE GEORGE	2006-06-01		size	
				appd	RAKHEE GEORGE	2006-06-01		A3	
sheet index		revision	H					type	
1		sheet	1					Product Customer Drawing	