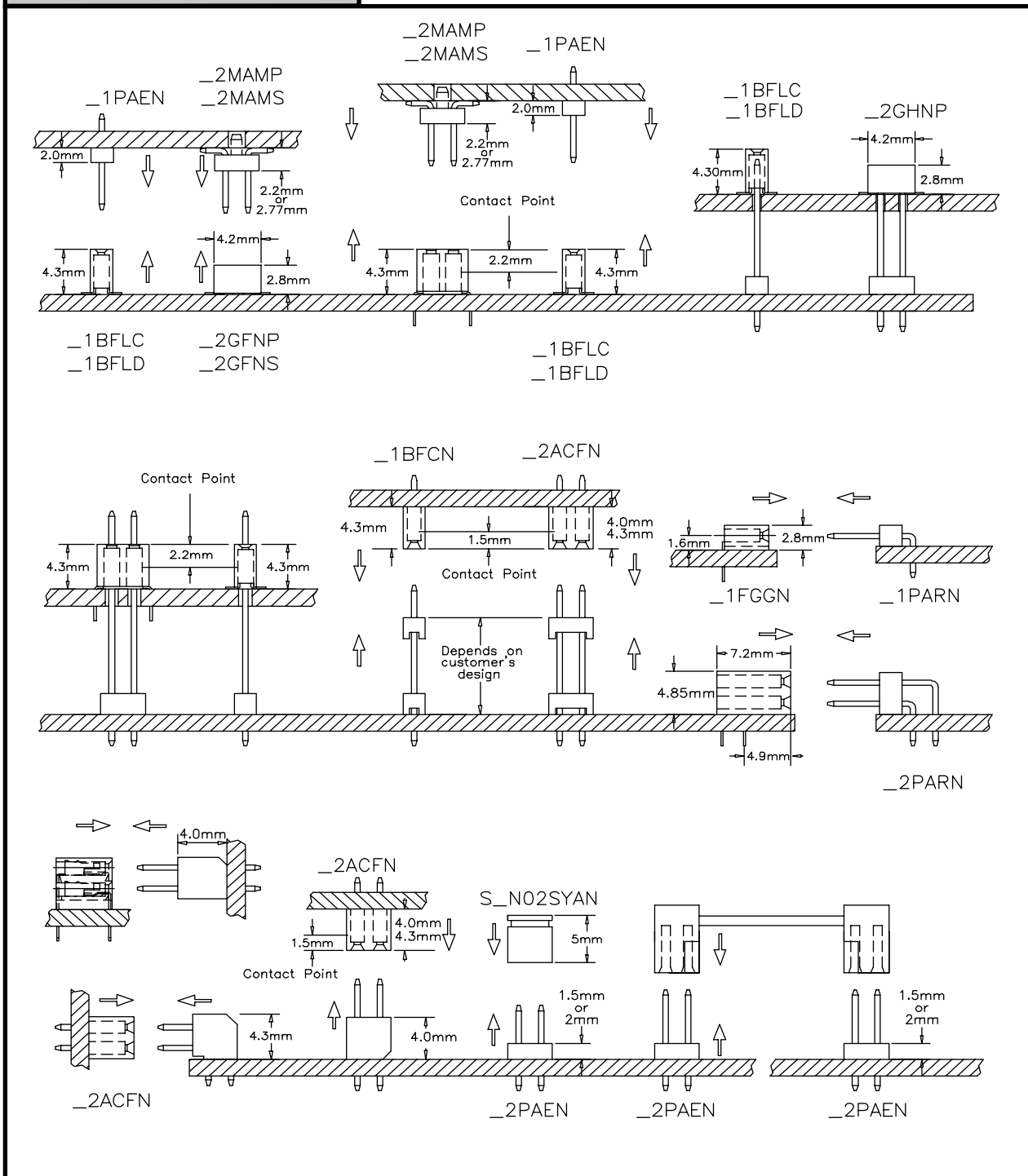


# 2mm X 2mm SQUARE POST HEADER

## SELECTION GUIDE



See opposite page for full part numbers.

Series numbers noted on above drawings are the last 5 positions in the part number.

Contact Sullins Electronics for additional information on parts without a series number noted.

# 2mm X 2mm SQUARE POST HEADER

## PART NUMBER CODING

**PLASTIC HOUSING** ———— P P P N 40 2  
 P = Header, Thermoplastic

**CONTACTS** ———— P P P N 40 2  
 P = Phosphor Bronze (With Female Only)  
 R = Brass (With Male Only)

**PLATING** ———— P P P N 40 2  

Contact	Termination
P = Gold Flash	Gold Flash
R = .000020 GOLD	.00010 TIN (4 Row Only)

**CONTACT CENTERS** ———— P P P N 40 2  
 N = 2mm

**NUMBER OF POSITIONS** ———— P P P N 40 2  
 02 to 40

**NUMBER OF ROWS** ———— P P P N 40 2  
 1 = 1 Row  
 2 = 2 Rows  
 4 = 4 Rows

ABC N -M#  
 ————  
 SPECIAL MODIFICATION  
 (Consult Factory) Omit for Standard

MOUNTING STYLE  
 C = SMT, Single Row Pin 1 Left  
 D = SMT, Single Row Pin 1 Right  
 N = No Mounting  
 P = Surface Mount with Guide Pins  
 S = Surface Mount without Guide Pins

TERMINATION TYPE

P/N CODE	GENDER	TERMINATION	ROWS	ENTRY
PAE	MALE	STRAIGHT	1 OR 2	N/A
RCC	MALE	STRAIGHT	4	N/A
PAR	MALE	RIGHT ANGLE	1 OR 2	N/A
MAM	MALE	SMT	2	N/A
BFC	FEMALE	STRAIGHT	1	TOP
AFC	FEMALE	STRAIGHT	2	TOP
EFC	FEMALE	STRAIGHT	4	TOP
FGG	FEMALE	RIGHT ANGLE	1	TOP
FJF	FEMALE	RIGHT ANGLE	2	TOP
BFL	FEMALE	SMT	1	TOP
GFN	FEMALE	SMT	2	TOP
GHN	FEMALE	SMT	2	BOTTOM
FFK	FEMALE	SMT	2	TOP