



**Mighty Cam ES**

HDMI/USB Camera designed for quick & accurate inspection

**Micro Lens**

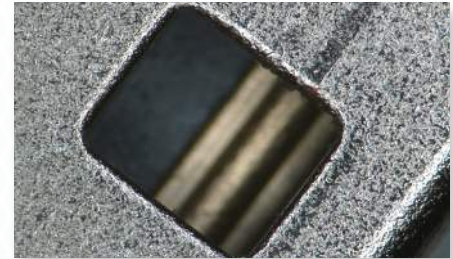
28.8x - 384x Magnification

**Heavy Duty Post Stand**

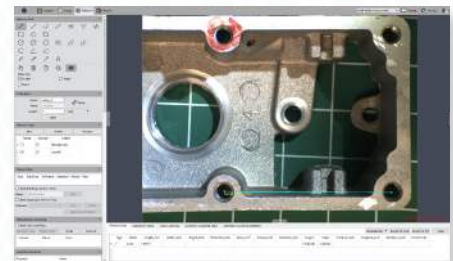
Accommodates a large variety of parts

**LED Ring Light**

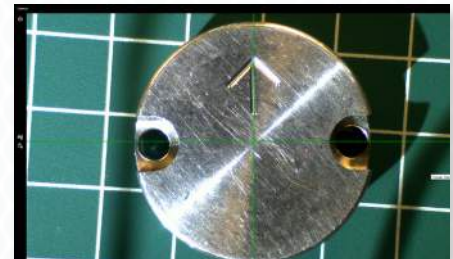
Provides uniformity & shadow free illumination



**Excellent Color Reproduction**



**USB Mode- Advanced Imaging/ Measurement Software Included**



**HDMI Mode: Image/Video Capture, On-Screen Tools (No PC required)**

# Mighty Cam ES

[28.8x-384x] w/ Micro Lens & Post Stand

High Definition 1080p inspection system with a 22" monitor offering superb image quality. **Provides a magnification range of 28.8x to 384x.** You can operate this system with or without a PC. Without a PC, the camera connects directly to the included HDMI monitor. View and record images using the included on screen tools. Images & videos can be saved to the included SD card. Connect the camera to a PC to utilize more advanced features in the included software. The included LED ring light allows you to illuminate the object to get the sharpest and greatest detail.

## Features

- 57.6x - 384x Magnification (28.8x - 192x when using the 0.5x objective lens)
- Camera features HDMI and USB outputs for use with an HD monitor or PC
- Save high resolution image/video files to the included SD Card - no PC required
- Advanced imaging/measurement software included for PC mode
- LED ring light with 96 ultra-bright, adjustable LEDs

<b>Mighty Cam ES</b>			
28.8x-384x w/ Micro Lens & Post Stand			
<b>Item #</b>	26700-109-ES		
<b>Magnification</b>	28.8x-384x		
<b>Working Distance</b>	82mm (w/ 1x Objective & 1x Coupler)		
<b>Interface</b>	USB 2.0 & HDMI		
<b>Resolution</b>	2MP 2592 (H) x 1944 (V)		
<b>Frame Rate</b>	<table border="1"> <tr> <td>USB 2.0 @ 15FPS</td> <td>HDMI @ 15FPS</td> </tr> </table>	USB 2.0 @ 15FPS	HDMI @ 15FPS
USB 2.0 @ 15FPS	HDMI @ 15FPS		
<b>Software</b>	<table border="1"> <tr> <td>USB 2.0 Mosaic V2</td> <td>HDMI Cloud 1.0 ver</td> </tr> </table>	USB 2.0 Mosaic V2	HDMI Cloud 1.0 ver
USB 2.0 Mosaic V2	HDMI Cloud 1.0 ver		
<b>Package Contents</b>	<ul style="list-style-type: none"> <li>• Mighty Cam ES (26100-259)</li> <li>• Micro Lens (26700-151)</li> <li>• Standard Post Stand (26800B-571)</li> <li>• LED Ring Light (26200B-216)</li> <li>• N-Type Focus Mount (26800B-578)</li> <li>• 22" LCD HD Monitor (26700-406)</li> <li>• 0.5x Coupler (26700-156)</li> </ul>		