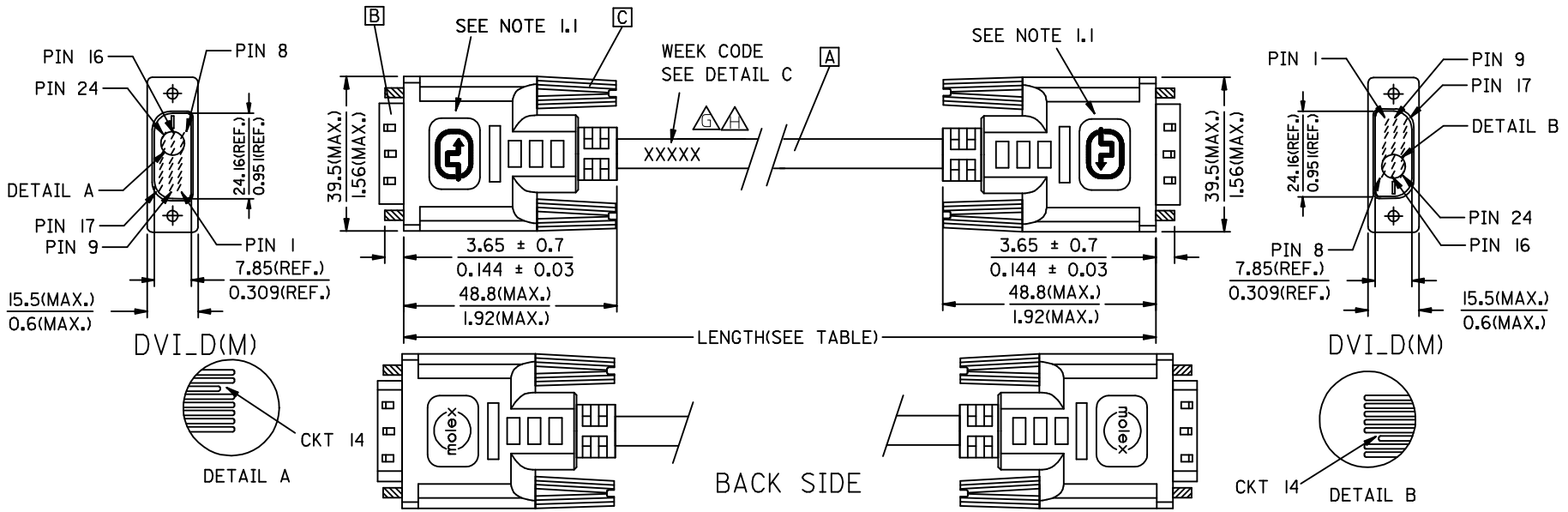
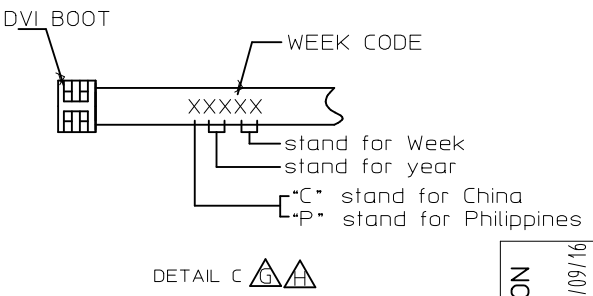


REVISIONS				
EC NO	DATE	REV	DESCRIPTION	CHANGER
CY14-5154	2013/08/21	G	CHANGE THE LABELING CONTENT FOR PRODUCTS TRANSFER TO PHILIPPINES	AHOU
CY14-5301	2013/09/12	H	CHANGE THE LABELING CONTENT FOR PRODUCTS TRANSFER TO PHILIPPINES	AHOU



△	88741-8121	DVI_D-DVI_D DUAL LINK CABLE 5M PARCHMENT WHT	5000 ± 150 196.9 ± 5.9	PARCHMENT WHITE	887808369
△	88741-8111	DVI_D-DVI_D DUAL LINK CABLE 3M PARCHMENT WHT	3000 ± 80 118.1 ± 3.1	PARCHMENT WHITE	887808369
△	88741-8101	DVI_D-DVI_D DUAL LINK CABLE 2M PARCHMENT WHT	2000 ± 60 78.7 ± 2.4	PARCHMENT WHITE	887808369
△	88741-8120	DVI_D-DVI_D DUAL LINK CABLE 5M BLK	5000 ± 150 196.9 ± 5.9	BLACK	887808368
△	88741-8110	DVI_D-DVI_D DUAL LINK CABLE 3M BLK	3000 ± 80 118.1 ± 3.1	BLACK	887808368
△	88741-8100	DVI_D-DVI_D DUAL LINK CABLE 2M BLK	2000 ± 60 78.7 ± 2.4	BLACK	887808368
	MX P/N	DESCRIPTION	LENGTH	CABLE COLOR	CABLE P/N



ENTER DESCRIPTION EC NO: CPG2014-0797 DRAWN: XJGU001 CHK'D: AHOU APPR: XAWANG	QUALITY SYMBOLS △=0 ▽=0 ▽=0	GENERAL TOLERANCES (UNLESS SPECIFIED)		DIMENSION STYLE MM/IN		SCALE	DESIGN UNITS METRIC	THIRD ANGLE PROJECTION
		4 PLACES	± ---	± ---	DRAWN BY	DATE	TITLE DVI_D DUAL LINK CABLE	
		3 PLACES	± ---	± ---	CHECKED BY	DATE		
		2 PLACES	± ---	± ---	APPROVED BY	DATE		
1 PLACE	± ---	± ---	XAWANG	2013/09/12				
		0 PLACE	± ---	± ---				
ANGULAR ± ---°		DRAFT WHERE APPLICABLE MUST REMAIN WITHIN DIMENSIONS		MATERIAL NO. SEE TABLE		DOCUMENT NO. SD-88741-002		SHEET NO. 1 OF 2
THIS DRAWING CONTAINS INFORMATION THAT IS PROPRIETARY TO MOLEX INCORPORATED AND SHOULD NOT BE USED WITHOUT WRITTEN PERMISSION								

8. CONNECTION DIAGRAM

SHIELD	SHIELD	GROUND
PIN 24	PIN 24	TMDS CLOCK-
PIN 23	PIN 23	TMDS CLOCK+
PIN 22	PIN 22	TMDS CLOCK SHIELD
PIN 21	PIN 21	TMDS DATA 5+
PIN 20	PIN 20	TMDS DATA 5-
PIN 19	PIN 19	TMDS DATA 0/5 SHIELD
PIN 18	PIN 18	TMDS DATA 0+
PIN 17	PIN 17	TMDS DATA 0-
PIN 16	PIN 16	HOT PLUG DETECT
PIN 15	PIN 15	GROUND(+5V)
PIN 14	PIN 14	POWER +5V
PIN 13	PIN 13	TMDS DATA 3+
PIN 12	PIN 12	TMDS DATA 3-
PIN 11	PIN 11	TMDS DATA 1/3 SHIELD
PIN 10	PIN 10	TMDS DATA 1+
PIN 9	PIN 9	TMDS DATA 1-
PIN 7	PIN 7	DDC DATA
PIN 6	PIN 6	DDC CLOCK
PIN 5	PIN 5	TMDS DATA 4+
PIN 4	PIN 4	TMDS DATA 4-
PIN 3	PIN 3	TMDS DATA 2 /4 SHIELD
PIN 2	PIN 2	TMDS DATA 2+
PIN 1	PIN 1	TMDS DATA 2-
DVI_D	DVI_D	CABLE FUNCTION

NOTE: 1. OVERMOLD SPECIFICATION

- 1.1 DVI BOOT MOLDED WITH SNOW WHITE PVC RESIN P/N IS 887800076.
- 1.2 UL94V-0, COLOR: MAD432
- 1.3 HARDNESS (DUROMETER): SHORE A 90-95

2. MECHANICAL SPECIFICATION

- 2.1 CABLE SHOULD STAND THE PULL FORCE 89-11IN FOR 30 SECONDS WITH NO VISIBLE TERMINATION DAMAGE.
- 2.2 CABLE SHOULD PASS THE FLEX TEST IN 100 CYCLES AT EACH OF PLANES, PER EIA 364-41, CONDITION 1.

3. CABLE ELECTRICAL SPECIFICATION

- 3.1 DIELECTRIC STRENGTH: 300VDC FOR 10mS.
- 3.2 INSULATION RESISTANCE: 20 MEGA Ohms
- 3.3 DIFFERENTIAL LINES CHARACTERISTIC IMPEDANCE: 100 ± 7 Ohms @TDR.

4. DVI CONNECTOR SPECIFICATION

- 4.1 REFER TO PRODUCT SPEC. PS74320-0001.
- 4.2 CONTACT PLATING: AU FLASH.

5. SHORTCIRCUIT AMONG DRAIN WIRES SIGNAL GROUND IS ACCEPTABLE IN DVI CABLE.

6. THIS PRODUCT MUST MEET MX RoHS COMPLIANCE.

7. MATERIAL LIST

ITEM	DESCRIPTION
C	DVI THUMB SCREW 887806077
B	DVI_D DUAL CHANNEL G/F CONNECTOR 743230003
A	DVI DULA LINK CABLE (SEE TABLE)

ENTER DESCRIPTION EC NO: CPG2014-0797 DRW/N: XJGU001 2013/09/16 CHK/D: AHOU 2013/09/16 APPR: XAWANG 2013/09/24	QUALITY SYMBOLS F=0 F=0 F=0	GENERAL TOLERANCES (UNLESS SPECIFIED)		DIMENSION STYLE MM/IN		SCALE	DESIGN UNITS METRIC	THIRD ANGLE PROJECTION		
						DRAWN BY DATE XJGU001 2013/09/06		TITLE DVI_D DUAL LINK CABLE		
						CHECKED BY DATE ZXDENG 2013/09/06				
						APPROVED BY DATE XAWANG 2013/09/12				
				ANGULAR ±---°		MATERIAL NO.		DOCUMENT NO.		SHEET NO.
		DRAFT WHERE APPLICABLE MUST REMAIN WITHIN DIMENSIONS		SEE TABLE		SD-88741-002		2 OF 2		

7 6 5 4 3 2 1

E

E

8. CONNECTION DIAGRAM

SHIELD	SHIELD	GROUND
PIN 24	PIN 24	TMDS CLOCK-
PIN 23	PIN 23	TMDS CLOCK+
PIN 22	PIN 22	TMDS CLOCK SHIELD
PIN 21	PIN 21	TMDS DATA 5+
PIN 20	PIN 20	TMDS DATA 5-
PIN 19	PIN 19	TMDS DATA 0/5 SHIELD
PIN 18	PIN 18	TMDS DATA 0+
PIN 17	PIN 17	TMDS DATA 0-
PIN 16	PIN 16	HOT PLUG DETECT
PIN 15	PIN 15	GROUND(+5V)
PIN 14	PIN 14	POWER +5V
PIN 13	PIN 13	TMDS DATA 3+
PIN 12	PIN 12	TMDS DATA 3-
PIN 11	PIN 11	TMDS DATA 1/3 SHIELD
PIN 10	PIN 10	TMDS DATA 1+
PIN 9	PIN 9	TMDS DATA 1-
PIN 7	PIN 7	DDC DATA
PIN 6	PIN 6	DDC CLOCK
PIN 5	PIN 5	TMDS DATA 4+
PIN 4	PIN 4	TMDS DATA 4-
PIN 3	PIN 3	TMDS DATA 2 /4 SHIELD
PIN 2	PIN 2	TMDS DATA 2+
PIN 1	PIN 1	TMDS DATA 2-
DVI_D	DVI_D	CABLE FUNCTION

- NOTE: 1. OVERMOLD SPECIFICATION
 1.1 DVI BOOT MOLDED WITH SNOW WHITE PVC RESIN P/N IS 887800076.
 1.2 UL94V-0, COLOR: MAD432
 1.3 HARDNESS (DUROMETER): SHORE A 90-95
 2. MECHANICAL SPECIFICATION
 2.1 CABLE SHOULD STAND THE PULL FORCE 89-111N FOR 30 SECONDS WITH NO VISIBLE TERMINATION DAMAGE.
 2.2 CABLE SHOULD PASS THE FLEX TEST IN 100 CYCLES AT EACH OF PLANES, PER EIA 364-41, CONDITION I.
 3. CABLE ELECTRICAL SPECIFICATION
 3.1 DIELECTRIC STRENGTH: 300VDC FOR 10mS.
 3.2 INSULATION RESISTANCE: 20 MEGA Ohms
 3.3 DIFFERENTIAL LINES CHARACTERISTIC IMPEDANCE: 100 ± 7 Ohms @TDR.
 4. DVI CONNECTOR SPECIFICATION
 4.1 REFER TO PRODUCT SPEC. PS74320-0001.
 4.2 CONTACT PLATING: AU FLASH.
 5. SHORTCIRCUIT AMONG DRAIN WIRES SIGNAL GROUND IS ACCEPTABLE IN DVI CABLE.
 6. THIS PRODUCT MUST MEET MX RoHS COMPLIANCE.

D

D

C

C

7. MATERIAL LIST

C	DVI THUMB SCREW 887806077
B	DVI_D DUAL CHANNEL G/F CONNECTOR 743230003
A	DVI DULA LINK CABLE (SEE TABLE)
ITEM	DESCRIPTION

B

B

A

A

ENTER DESCRIPTION EC NO: DG2006-0186 T/DRWN:PDAI 2006/03/09 CHKD: 2006/03/09 APPR:TKAN 2006/03/10	QUALITY SYMBOLS 	GENERAL TOLERANCES (UNLESS SPECIFIED) <table border="1"> <tr> <td></td> <td>mm</td> <td>INCH</td> </tr> <tr> <td>4 PLACES</td> <td>± ---</td> <td>± ---</td> </tr> <tr> <td>3 PLACES</td> <td>± ---</td> <td>± ---</td> </tr> <tr> <td>2 PLACES</td> <td>± ---</td> <td>± ---</td> </tr> <tr> <td>1 PLACE</td> <td>± ---</td> <td>± ---</td> </tr> <tr> <td colspan="3">ANGULAR ± ---°</td> </tr> </table>		mm	INCH	4 PLACES	± ---	± ---	3 PLACES	± ---	± ---	2 PLACES	± ---	± ---	1 PLACE	± ---	± ---	ANGULAR ± ---°			DIMENSION STYLE MM/IN DRAWN BY PDAI DATE 2006/03/07 CHECKED BY ZXDENG DATE 2006/01/11 APPROVED BY BORON DATE 2006/03/07	SCALE --- DESIGN UNITS METRIC THIRD ANGLE PROJECTION	TITLE DVI_D DUAL LINK CABLE
		mm	INCH																				
	4 PLACES	± ---	± ---																				
	3 PLACES	± ---	± ---																				
2 PLACES	± ---	± ---																					
1 PLACE	± ---	± ---																					
ANGULAR ± ---°																							
DRAFT WHERE APPLICABLE MUST REMAIN WITHIN DIMENSIONS	MATERIAL NO. SEE TABLE DOCUMENT NO. SD-88741-002 SHEET NO. 2 OF 2	MOLEX INCORPORATED																					
SIZE 4	THIS DRAWING CONTAINS INFORMATION THAT IS PROPRIETARY TO MOLEX INCORPORATED AND SHOULD NOT BE USED WITHOUT WRITTEN PERMISSION																						
REV	DESCRIPTION																						

6 5 4 3 2 1