

BASIC Stamp Controller Interface Board:

Features and Specification

The BASIC Stamp Controller Interface Board (StampCI) is intended for direct connection of Parallax BASIC Stamp microcontroller (BS1-IC, BS2-IC, BS2e-IC, BS2sx-IC and BS2p24-IC modules) to industrial digital I/O controllers with 50 pin IDC type connector interface. This documentation explains StampCI features.

Features

- Supports either BS1-IC, BS2-IC, BS2e-IC, BS2sx-IC and BS2p24-IC
- 2.1mm power plug
- +5vdc 1000ma power output for digital I/O controller
- Prototype area for connection of peripheral devices to BASIC Stamp I/O pins
- PC parallel and serial ports for programming the BS1-IC, BS2-IC, BS2e-IC, BS2sx-IC and BS2p24-IC respectively
- BASIC Stamp I/O pin connections to PC parallel port I/O pins
- 0 to 70 °C operating temperature range
- Built in DB 9 connector for easy interface to PC

Power Supply

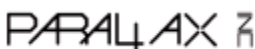
Power required is 9-12 vdc @ 1000ma max. The green LED should light when power is applied. Please note that the center tap on the 2.1mm power plug must be a positive (+) connection. Ground for the relay rack will be supplied through the 50 pin header. There is also a ground accessible on the (x3) screw-down terminal on the terminal that is furthest away from the +5 indicator on the board. Always disconnect the external power source from the board before attempting to install or remove any board components.

BASIC Stamp Modules

The StampCI board allows you to use the BS1-IC, BS2-IC, BS2e-IC, BS2sx-IC and BS2p24-IC modules. Never install more than one of these modules on the board. The module's pin 1 connects to the number 1 marking on the board. Modules may also be programmed while connected to the StampCI board.

Reset Switch

The reset switch is common to all BASIC Stamps. Each BASIC Stamp has its own brown-out-reset circuit that pulls the reset line high. Pushing the reset pushbutton pulls the RST line of the BASIC Stamp to ground, thereby resetting the BASIC Stamp. The same thing can be done through the PC parallel port (x1) pin 1 by setting it low and returning to a high state. NOTE: (If pin 1 of port x1 pin is driven high, the BASIC Stamp will not be able to be reprogrammed). A ribbon cable can be connected to an IDC header with the opposite side attached to a DB25 connector to provide a parallel connection between the PC and header connector (x1).

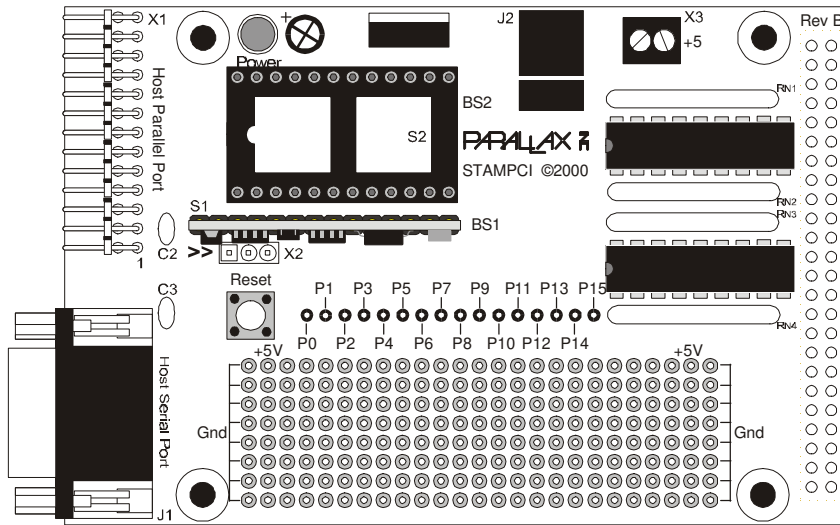


BS1-IC Programming Interface

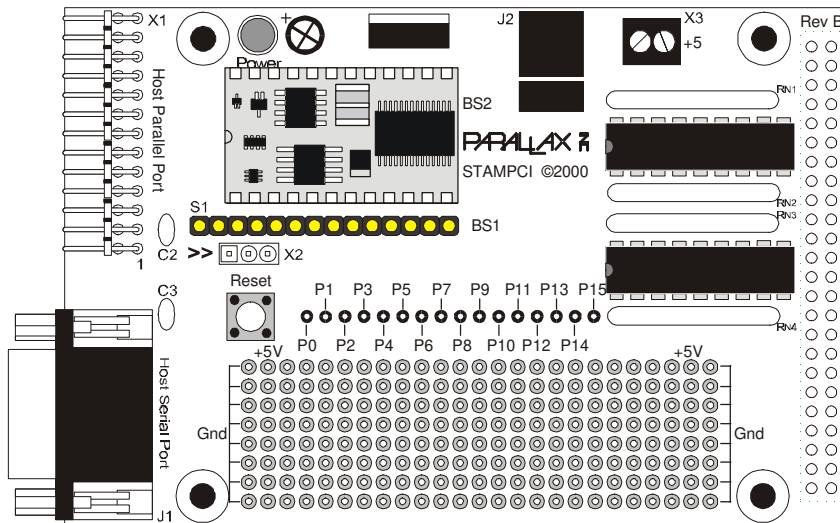
The BS1-IC programming interface is a 3 pin, in-line connection (x2). When connecting the BS1-IC Programming Cable (provided in either the BS1-IC Starter Kit or the Stamp Programming Package) line up the arrow found on the side of the cable with the arrows found on the StampCI board next to the x2 connector.

BS2-IC, BS2e-IC, BS2sx-IC and BS2p24-IC Programming Interface

The BS2-IC, BS2e-IC, BS2sx-IC and BS2p24-IC programming interface is the built-in DB 9 connector. Use a standard, straight-through serial cable (not a null-modem cable). The cable that is provided in the BS2 (or above) starter kit is perfect for this.



Stamp CI with BS1-IC properly installed.



Stamp CI with BS2-IC properly installed.



I/O Pins

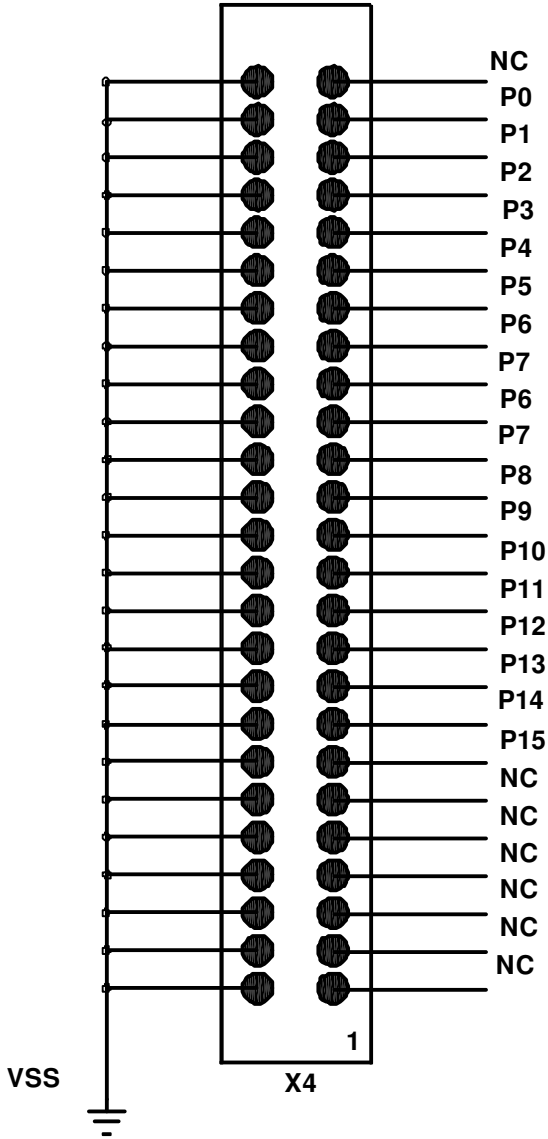
All of the BASIC Stamp's I/O pins connect directly to the prototype area of the board with no driver protection. When hooking devices to the BASIC Stamp from the prototype board, care must be taken to ensure you follow the current and voltage specifications of the BASIC Stamp module that you are using. The BASIC Stamp's I/O pins are also connected to the 50-pin header through a ULN2803a that is set up as an open collector line driver.

Software Programming

Simply use the BASIC Stamp's HIGH or LOW command to turn the digital I/O module on or off. The Stamp CI board can be programmed with the Windows or Dos software provided in the Starter Kit or on the Parallax, Inc web site: <http://www.parallaxinc.com>. There is also a VB program that allows users to view the I/O ports on their PC via parallel port. This software can also be found at the Parallax web site.

Controller Board Interface

The StampCI board's 50-pin IDC header (x4) attaches directly to the mating pin IDC header of the digital I/O control board (OPTO22 p/n G4PB16 or equivalent digital I/O board that has the same connector electrical layout). The boards are attached on the same level to one another.



Top view