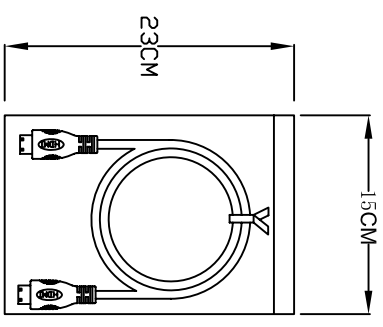
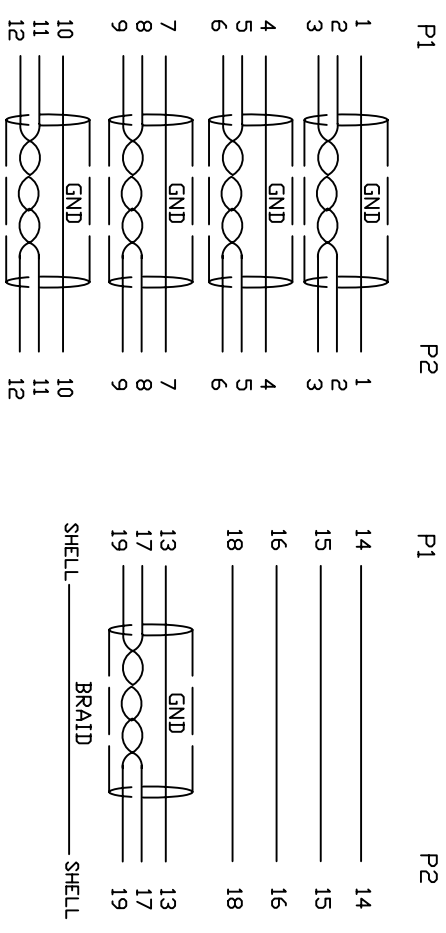


1. Wiring Diagram.



- 2. Cable test condition :
 Open / Short : 100%
 Insulation resistance : 5M ohms
 Contact resistance : 2 ohm
 Hipot : DC 300V / 1 sec
 3. Each pcs with PE polybag.

| | | | | | | | |
|-----|----------|--|-----|--------|--|-----------------|---------------|
| 5 | COPER | W/20MM*1.35MM | 1 | | A | INITIAL RELEASE | 2015/10/10 |
| 4 | PVC | 45P PVC BLACK OVERMOLD | 25g | | REVISION# | DESCRIPTION | DATE |
| 3 | PE | LLDPE 500026 6201 INSIDE MOLDING | 16g | | Cnc Tech, LLC DWN NO: 742-20010-00150 TITLE: HDMI C/M TO HDMI C/M CABLE | | |
| 2 | CONN | HDMI C TYPE MALE PIN G/F ,SHELL PLATED NICKEL, INSULATION BLACK | 2 | P1,P2 | | | |
| 1 | CABLE | UL20276 (30AWG (7/0.1TS) *IP+EA+AL/MY) *5+30AWG (7/0.1TS) *C +AEM(16/6/0.12AM) ODS.0 BLACK | 1 | 1500mm | DRAWN | DATE | REV |
| NO. | PART NO. | DESCRIPTION | | QTY | UNIT/REF | CHECKED | CUSTOMER P/N: |
| | | BILL OF MATERIAL | | | | APPROVAL | CUSTOMER: |
| | | | | | | | SHEET 1 OF 1 |