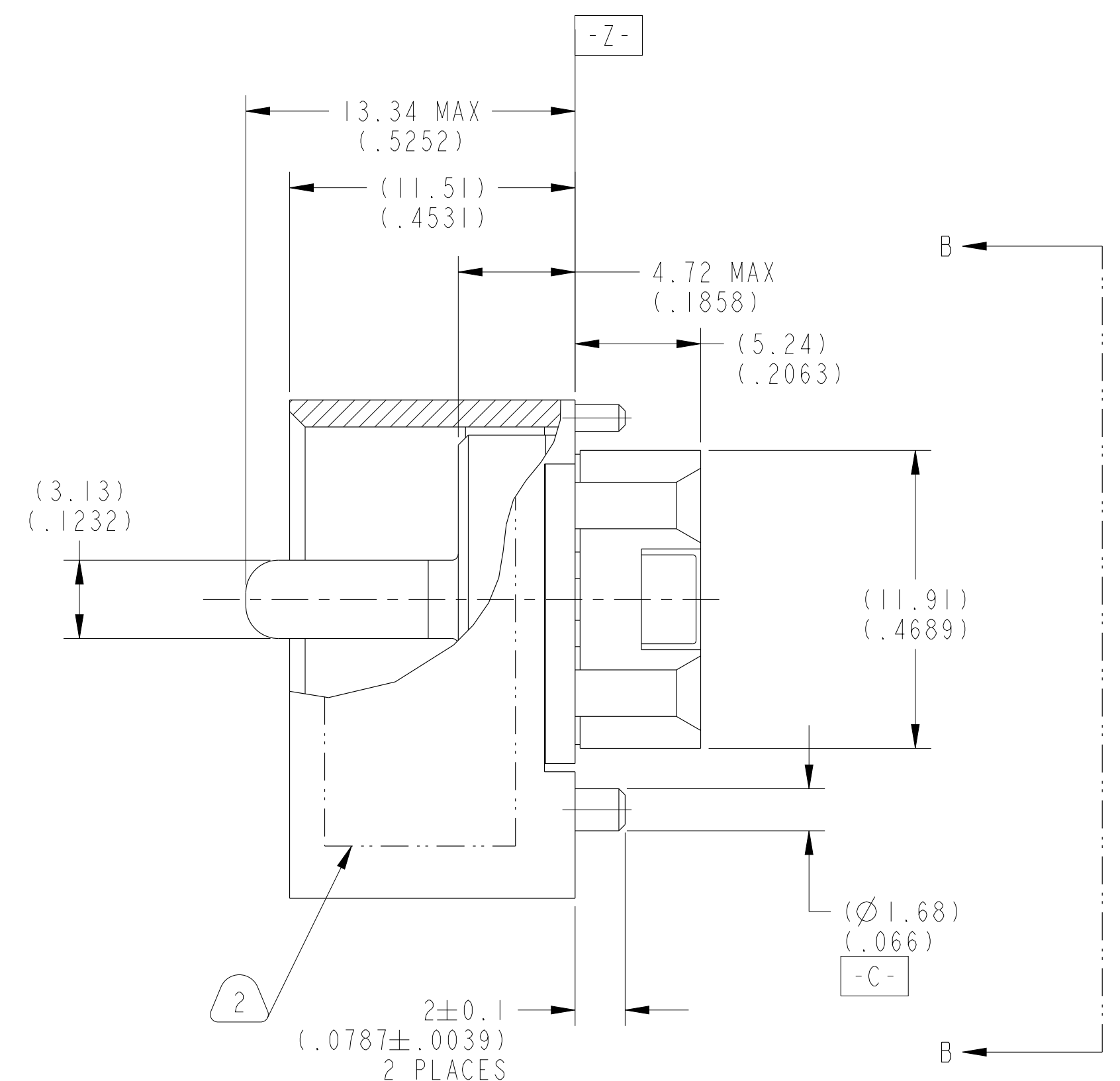
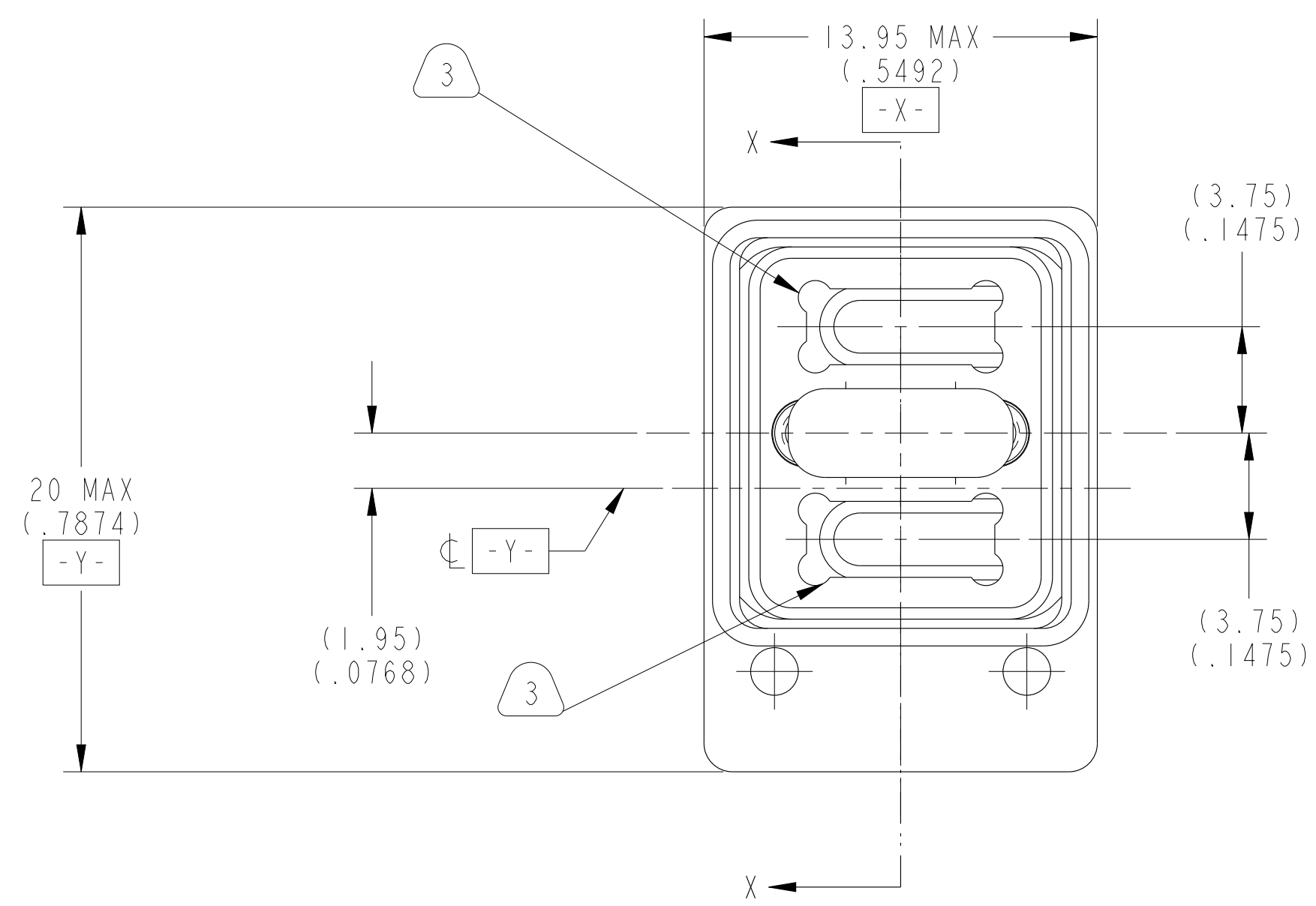
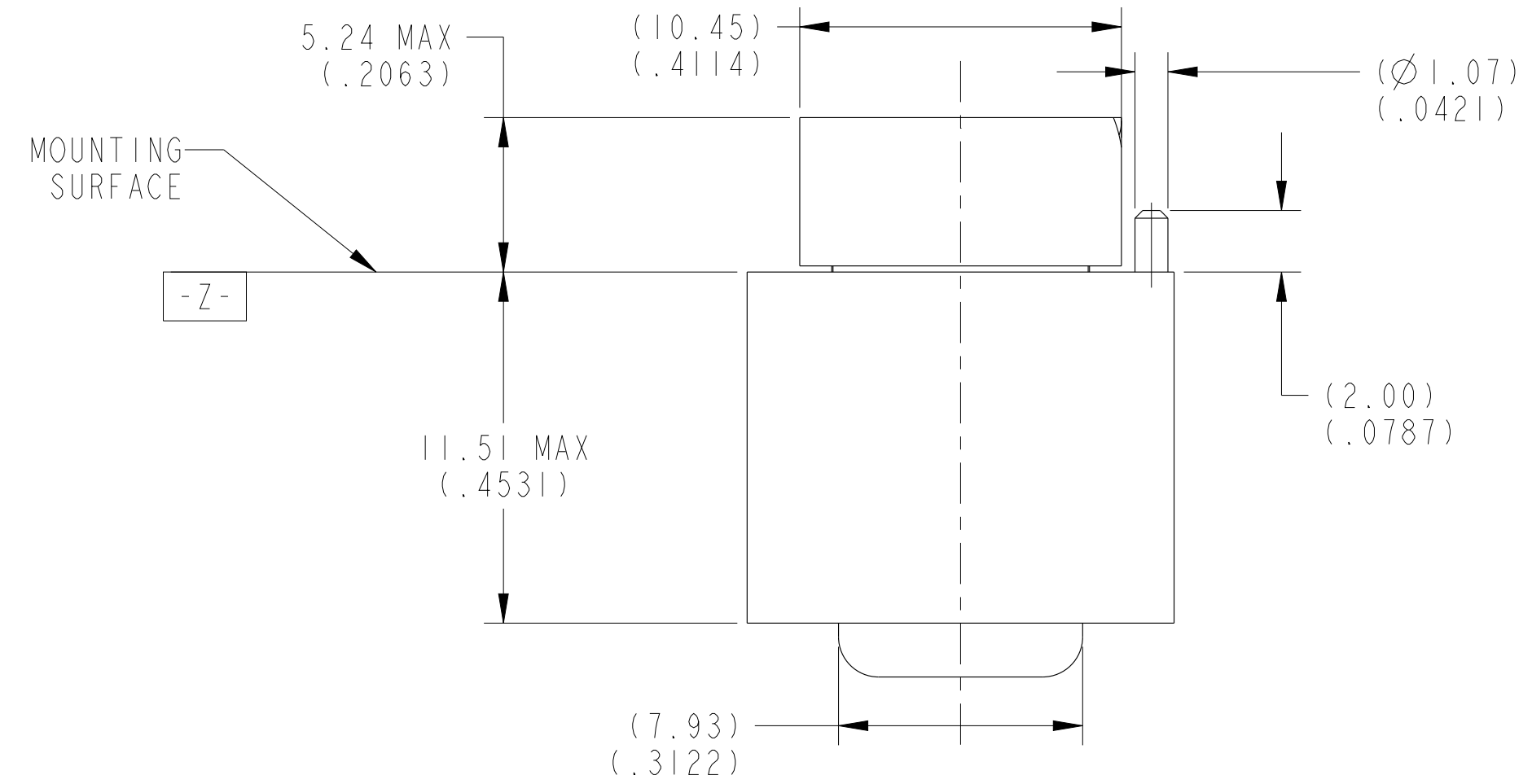


REV. B	SHEET 1 OF 3	10-504639-007
M REVISIONS		
LTR	DESCRIPTION	DATE
A	PRODUCTION RELEASE	6/21/18
B	CL(11) SEE CHANGE NOTICE ECN: D0089	11/1/19



**SECTION X-X**  
**METRIC DRAWING**

SEE SHEET 2

**NOTES:**  
THE USE OF THIS DOCUMENT IS UNLIMITED. HOWEVER, DOCUMENTS REFERENCED HEREON MAY CONTAIN LIMITED RIGHTS DATA.

SCALE 5.000

NONE	PRO/ENGINEER INFORMATION
NEXT ASSEMBLY	Pro/e Model Used: 10-504639-007.DWG.ASSEM Drawing Name: 10-504639-007

UNLESS OTHERWISE SPECIFIED	SPECIFICATIONS	POS	QTY	PART NUMBER	DESCRIPTION	NOTE
LINEAR DIMENSIONS ARE IN MILLIMETERS TOLERANCES: (INCHES) .XXXX = ±NA ANGLES= ±2° .XXX = ±NA .XX = ±.13 .X = ±.25 DIM. & TOL. PER ASME Y14.5M; DRM PER MIL-DTL-31000; OTHER Amphenol Sds. PER 9-3800 LEGENDS: =FLAG NOTE CALL OUT REFERENCE ONLY	MATERIAL SPEC.	PARTS LIST				
	NONE	<b>AMPHENOL CORPORATION</b> 40-60 DELAWARE AVENUE SIDNEY, N.Y. 13838 <b>CONNECTOR, FIBER OPTIC, BACKPLANE,            2 MT SPECIAL            (VITA 66.4 ENVELOPE)</b>				
PROCESS SPEC.	9-3895 9-3856-5	APPROVALS	DATE	PREPARED BY: R. CHAPMAN ENGINEER IN CHARGE: E. HICKEY DESIGN MANAGER: R. SELFRIDGE DESIGN ACTIVITY GROUP: BLP 23-Jun-17 THIRD ANGLE PROJECTION		
				SIZE	CAGE CODE	DOCUMENT NO.
				C	77820	10-504639-007
				SCALE: 3.0	REF: 10-504639-006	SHEET 1 OF 3

10-504639-007 DOCUMENT NO. SHEET 1 OF 3 REV. B

10-504639-007 DOCUMENT NO. SHEET 1 OF 3 REV. B

10-504639-007

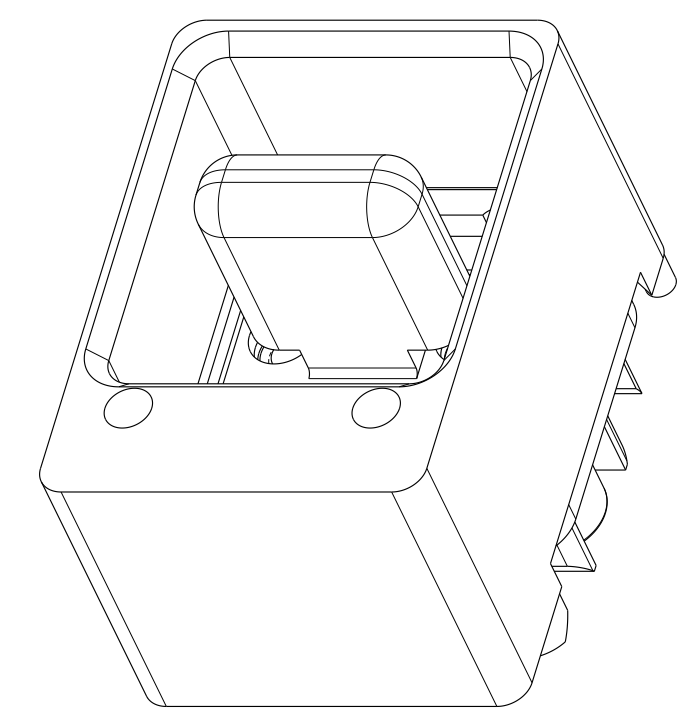
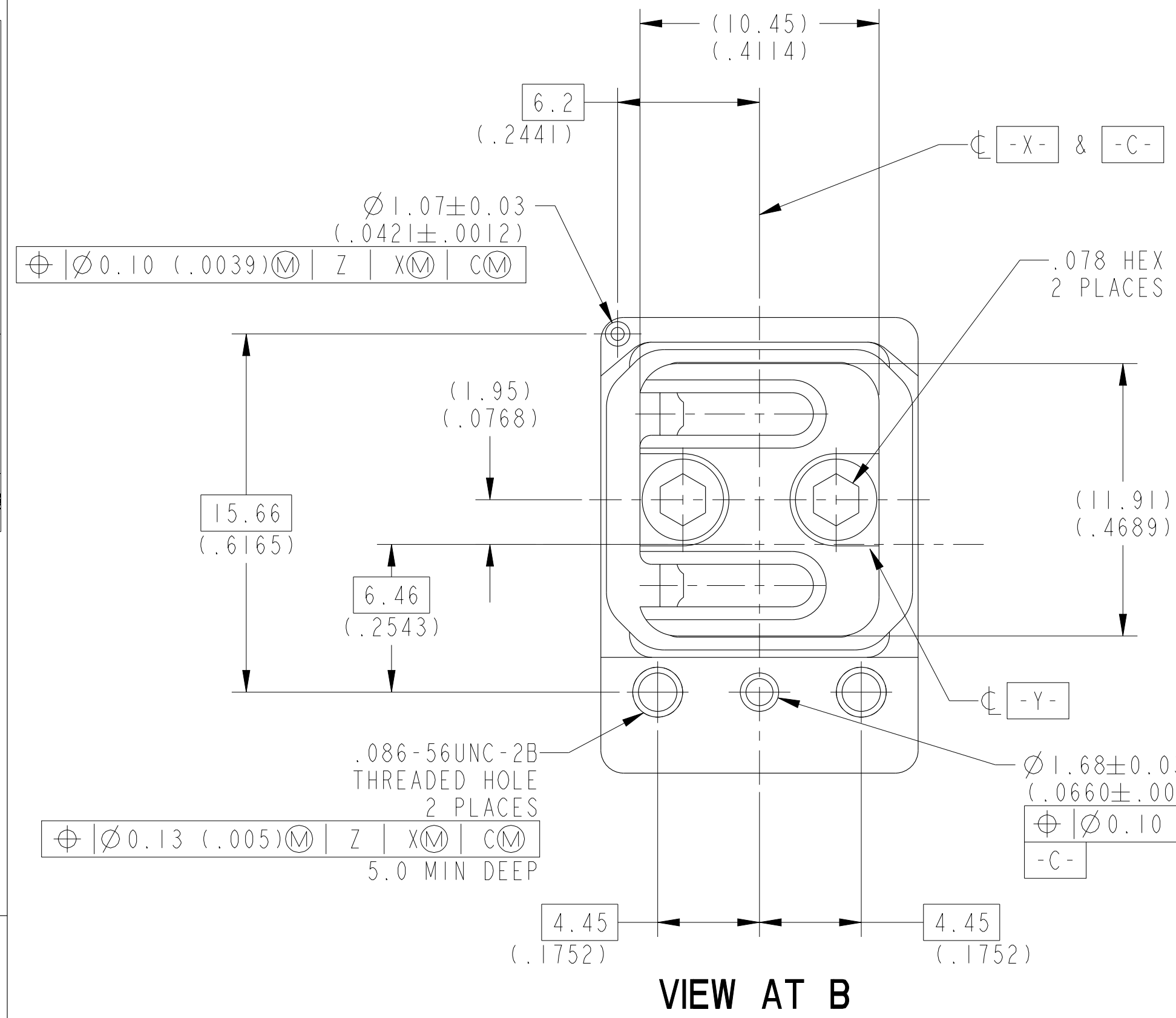
SHEET 2 OF 3

REV. B

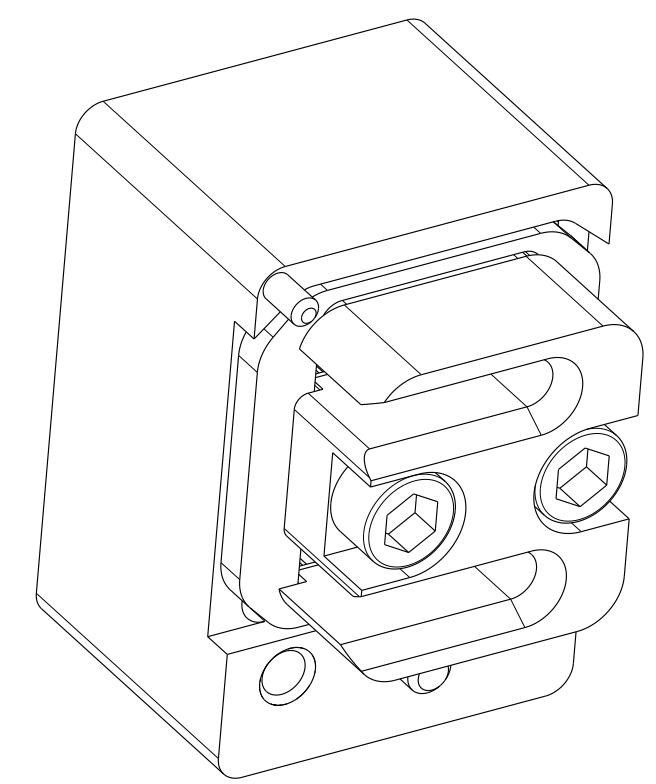
C

B

A



**TOP ISO VIEW**  
 SCALE 4.000



**BOTTOM ISO VIEW**  
 SCALE 4.000

**VIEW AT B**

7. FOR CONNECTOR INSTALLATION ILLUSTRATION SEE SHEET 3.
6. FOR MATING MODULE CONNECTOR ASSEMBLY, SEE DRAWING 10-504637-009.
5. TIGHTEN CAPTIVE SCREWS TO 2-3 IN-LBS AFTER INSTALLING MT FERRULE (NOT INCLUDED).
4. FIBER OPTIC INSERT IS DESIGNED FOR MT TYPE FERRULES TERMINATED TO NON-STRENGTH MEMBERED RIBBON CABLE.
3. INDICATED CAVITIES WILL ACCOMODATE A STANDARD 12 CHANNEL MT FERRULE PER IEC 61754-5 (SEE NOTE 4).
2. BLACK INK STAMP "APH" 77820 PART NUMBER AND DATE CODE ON INDICATED SURFACE PER 9-3856-5. DATE CODE PER 9-3895. CHARACTERS TO BE 1.6±.51 (.062±.020) HIGH. ADDITIONAL INFORMATION MAY BE REQUESTED BY PURCHASE ORDER.
1. PARTS ARE SHIPPED UNASSEMBLED.

**MATERIALS AND FINISHES**

COMPONENT	MATERIAL/ FINISH
BACKPLANE SHELL	BODY - MATERIAL - ALUM. ALLOY PER AMS 4150 FINISH - CHROMATE TREATMENT PER MIL-C-5541, CL 3
INSERT ASSEMBLY	FRONT INSERT/RETAINER - MATERIAL - ALUM ALLOY PER AMS 4150 FINISH - CHROMATE TREATMENT PER MIL-C-5541, CL3 SCREW - STAINLESS STEEL 300 SERIES, PASSIVATED HELICAL INSERTS - STAINLESS STEEL 300 SERIES, PASSIVATED

THE USE OF THIS DOCUMENT IS UNLIMITED.  
 HOWEVER, DOCUMENTS REFERENCED HEREON  
 MAY CONTAIN LIMITED RIGHTS DATA.

SIZE <b>C</b>	CAGE CODE <b>77820</b>	DOCUMENT NO. <b>10-504639-007</b>	REV. <b>B</b>
SCALE: 3.0	REF. 10-504639-006	SHEET 2 OF 3	

SHEET 2 OF 3

10-504639-007

REV. B

A

