

# Features

- 2:1 Wide input range regulated converter
- 2W in compact SMD package
- -40°C to +85°C operating temperature @ full load
- High 3kVDC/1 second (1kVAC/1 minute)
- Continuous short circuit protection
- IEC/EN62368-1 certified (CB scheme)

# Regulated Converters

## RTC2

**2 Watt  
SMD  
Single Output**



### Description

The RTC2 is a 2W, open-frame, SMD, isolated DC/DC converter with 2:1 input voltage range. It is available with 5V (4.5-9V) or 24V (18-36V) inputs and offers a single 5V output which is short circuit protected. The output is tightly regulated with less than 50mV output ripple. There is no minimum load requirement. The operating temperature is -40°C up to 100°C (with derating). Isolation is 3kVDC/1kVAC (functional Isolation) and a control pin is fitted as standard. The converter is IEC/EN62368-1 certified and is 10/10 RoHS-conform. Class B EMC conformity can be reached with a simple external LC filter.

### Selection Guide

Part Number	nom. Input Voltage [VDC]	Output Voltage [VDC]	Output Current [mA]	Efficiency typ. <sup>(1)</sup> [%]	max. Capacitive Load <sup>(2)</sup> [µF]
RTC2-0505SRW	4.5 - 9	5	400	76	4700
RTC2-2405SRW	18 - 36	5	400	80	4700

**Notes:**

Note1: Efficiency is tested at nominal input and full load at +25°C ambient.

Note2: Max. cap. load is tested at minimum input and full resistive load.

### Model Numbering



**Notes:**

Note3: without suffix, standard tray packaging  
 add suffix „-R“ for Tape and Reel packaging

**Ordering Examples:**

RTC2-0505SRW = nom.Vin=5VDC, nom. Vout= 5VDC, standard 3kVDC/1 second isolation, tray packaging  
 RTC2-2405SRW-R = nom.Vin= 24DC, nom. Vout= 5VDC, standard 3kVDC/1 second isolation, tape and reel packaging

### Specifications (measured @ Ta= 25°C, nominal Vin, full load and after warm up unless otherwise specified)

BASIC CHARACTERISTICS					
Parameter	Condition	Min.	Typ.	Max.	
Internal Input Filter					capacitor
Input Voltage Range	nom. Vin= 5VDC 24VDC	4.5VDC 18VDC	5VDC 24VDC	9VDC 36VDC	
Input Surge Voltage	100ms max. nom. Vin= 5VDC 24VDC		15VDC 50VDC		
Quiescent Current	nom. Vin= 5VDC 24VDC		40mA 3mA		

continued on next page

IEC/EN62368-1 certified  
 CB Report  
 EN55022

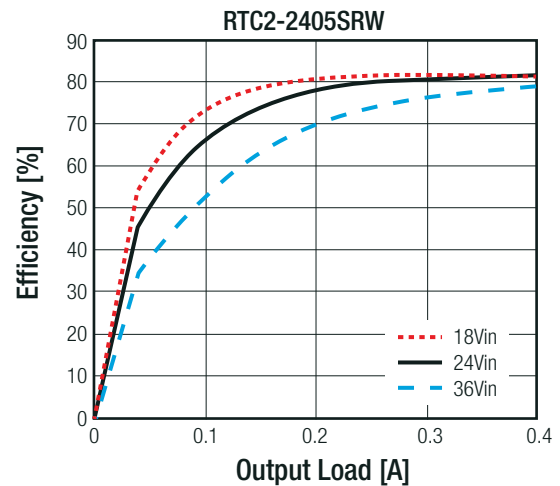
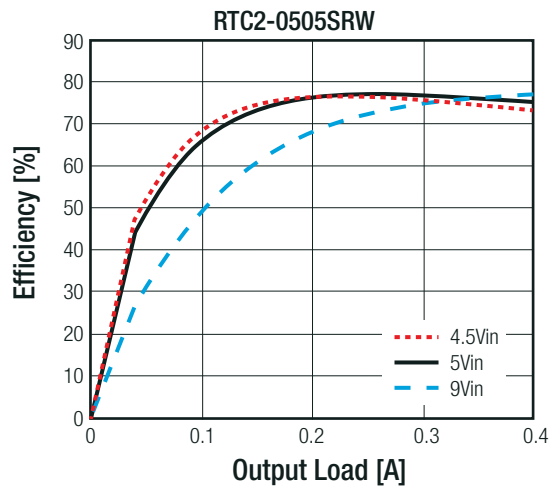
**Specifications** (measured @ Ta= 25°C, nominal Vin, full load and after warm up unless otherwise specified)

Parameter	Condition	Min.	Typ.	Max.
Start-up time			500µs	
Rise Time			450µs	
Hold-up Time			10µs	
Internal Operating Frequency	nom Vin= 5VDC 24VDC		180kHz 210kHz	
Minimum Load		0%		
Output Ripple and Noise <sup>(4)</sup>	20MHz BW			50mVp-p
ON/OFF CTRL	DC-DC ON DC-DC OFF			Open or 0.0V<Vr<0.8VDC 2V<Vr<6VDC
Input Current of CTRL Pin	nom Vin= 5VDC 24VDC		40mA 16mA	
Standby Current			0.75mA	1.5mA

**Notes:**

Note4: Measurements are made with a 0.1µF MLCC across output. (low ESR)

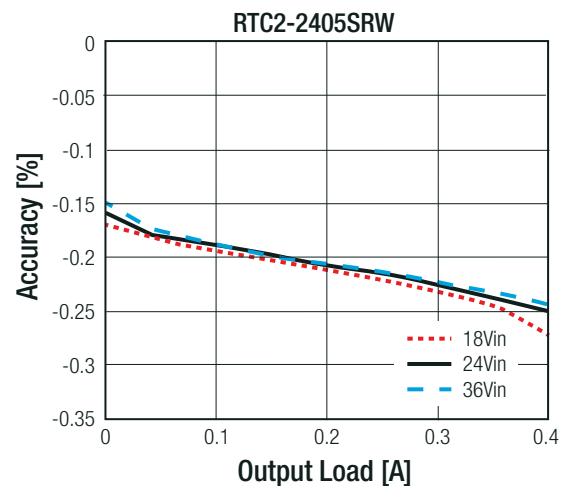
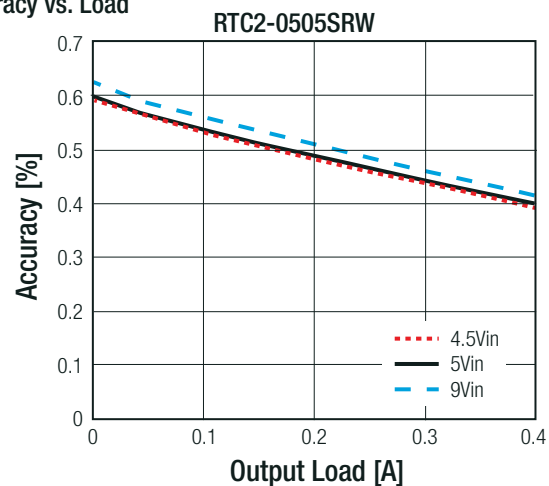
**Efficiency vs. Load**



**REGULATIONS**

Parameter	Condition	Value
Output Accuracy		±2.0% typ.
Line Regulation	low line to high line, full load	±0.2% max.
Load Regulation	0% to 100% load	±0.5% max.

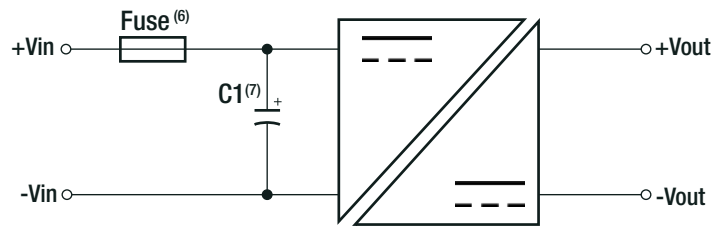
**Accuracy vs. Load**



**Specifications** (measured @ Ta= 25°C, nominal Vin, full load and after warm up unless otherwise specified)

PROTECTIONS			
Parameter	Type	Value	
Short Circuit Protection (SCP)	below 100mΩ	continuous, auto recovery	
Isolation Voltage <sup>(6)</sup>	I/P to O/P	tested for 1 second	3kVDC
		rated for 1 minute	1kVAC <sup>(7)</sup>
Isolation Resistance		1GΩ min.	
Isolation Capacitance		25pF typ.	
Insulation Grade		functional	

**Protection Circuit**



**Notes:**

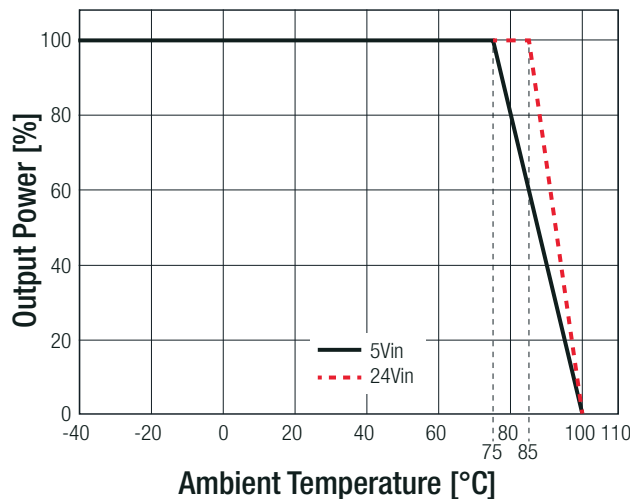
- Note5: For repeat Hi-Pot testing, reduce the time and/or the test voltage
- Note6: An input fuse is required if the main supply is not over-current protected. Recommended fuse: T2A slow blow type
- Note7: An external input filter capacitor is required if the model has to meet EN6100-4-4 and EN61000-4-5  
Recom suggested: Nippon chemi-con KY Series, 220µF/100V ESR 48mΩ

**ENVIRONMENTAL**

Parameter	Condition	Value
Operating Temperature Range	with derating (see graph)	-40°C to +100°C
Temperature Coefficient		±0.05%/°C
Operating Altitude		5000m
Operating Humidity	non-condensing	5% - 95% RH max.
Pollution Degree		PD2
Vibration		according to MIL-STD-202G
MTBF	according to MIL-HDBK-217F, G.B. +25°C	2145 x 10 <sup>3</sup> hours

**Derating Graph**

(@ Chamber and natural convection 0.1 m/s)



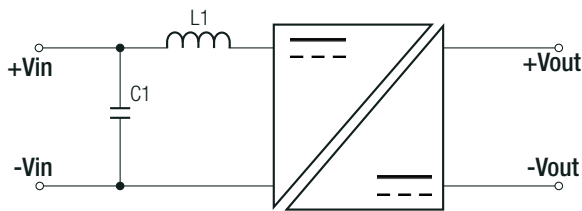
**Specifications** (measured @ Ta= 25°C, nominal Vin, full load and after warm up unless otherwise specified)

**SAFETY AND CERTIFICATIONS**

Certificate Type (Safety)	Report / File Number	Standard
Audio/Video, information and communication technology equipment - Safety requirements (CB Scheme)	L0339m43-CB-1-B1	IEC62368-1, 2nd Edition, 2014 EN62368-1, 2014
RoHS2		RoHS-2011/65/EU + AM2 (10/10)

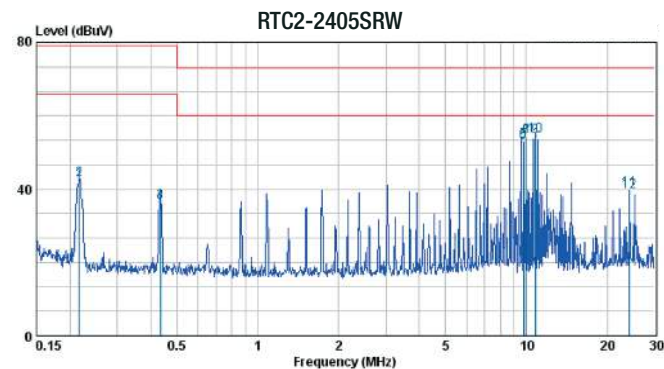
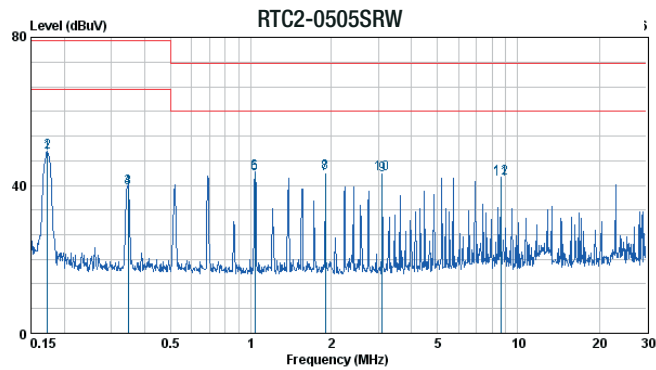
EMC Compliance	Condition	Standard / Criterion
Information technology equipment - Radio disturbance characteristics - Limits and methods of measurement	with external filter (see filter suggestion below)	EN55022, Class A EN55022, Class B
Electromagnetic compatibility of multimedia equipment - Emission requirements		EN55032, Class B
Information technology equipment - Immunity characteristics - Limits and methods of measurement		EN55024
ESD Electrostatic discharge immunity test	Air: ±8kV; Contact: ±4kV	EN61000-4-2, Criteria A
Radiated, radio-frequency, electromagnetic field immunity test	3V/m	EN61000-4-3, Criteria A
Fast Transient and Burst Immunity	DC Port: ±0.5kV	EN61000-4-4, Criteria A
Surge Immunity	DC Port: ±1kV	EN61000-4-5, Criteria B
Immunity to conducted disturbances, induced by radio-frequency fields	DC Port: 3V	EN61000-4-6, Criteria A
Power Magnetic Field Immunity	50Hz 1A/m	EN61000-4-8, Criteria A

**EMC Filtering Suggestions according to EN55022 Class A**



nom. Vin	C1	L1
5VDC	22µF/16V MLCC	12µH SMD Inductor
24VDC	22µF/50V MLCC	22µH SMD Inductor

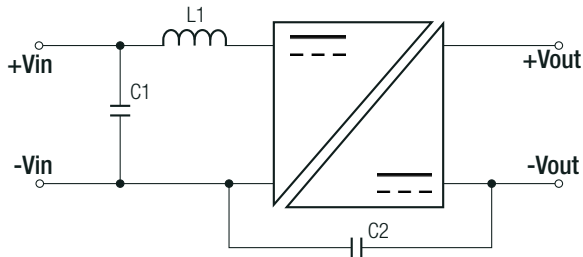
**EN55022 Class A Conducted Emissions**



continued on next page

**Specifications** (measured @ Ta= 25°C, nominal Vin, full load and after warm up unless otherwise specified)

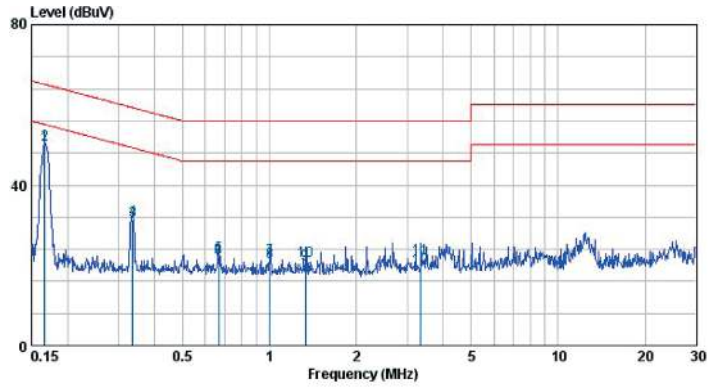
**EMC Filtering Suggestions according to EN55022 Class B**



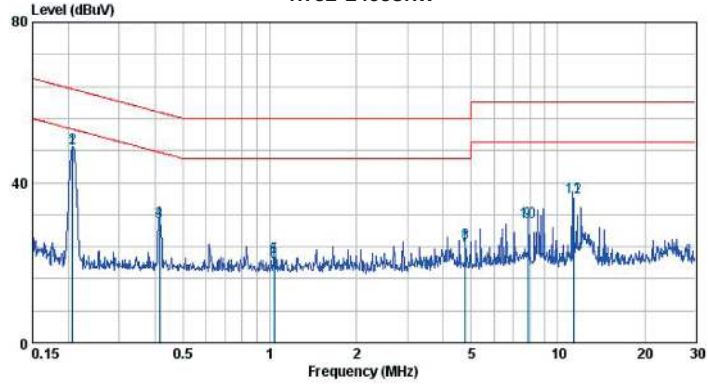
nom. Vin	C1	C2	L1
5VDC	22µF/16V MLCC	220pF/4kV	12µH SMD Inductor
24VDC	22µF/50V MLCC	Disc ceramic	

**EN55022 Class B Conducted Emmissions**

RTC2-0505SRW



RTC2-2405SRW



**DIMENSION and PHYSICAL CHARACTERISTICS**

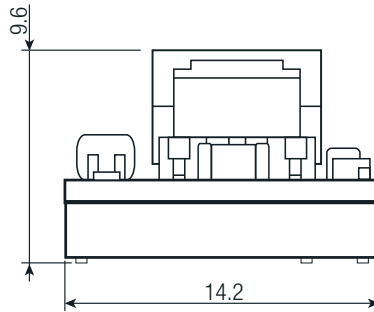
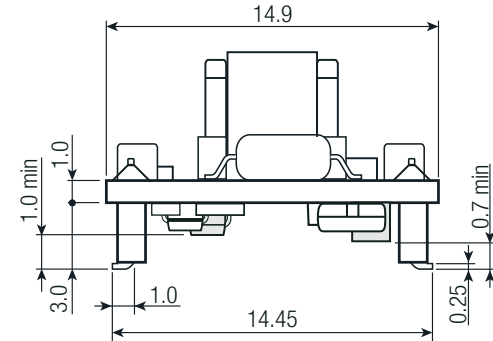
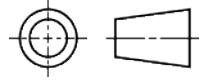
Parameter	Type	Value
Material	case (spacers) PCB	plastic (JL94 V-0) FR4 (JL94 V-0)
Dimension (LxWxH)		14.99 x 14.22 x 9.6mm
Weight		2.0g typ.

continued on next page

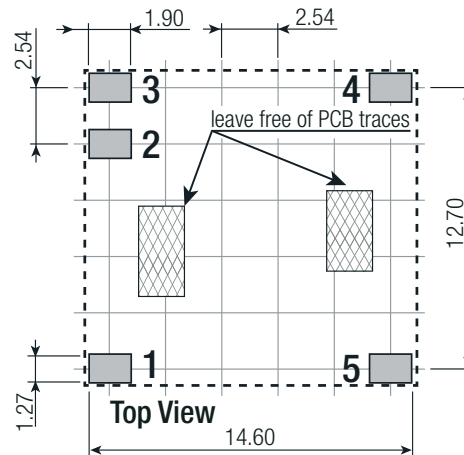
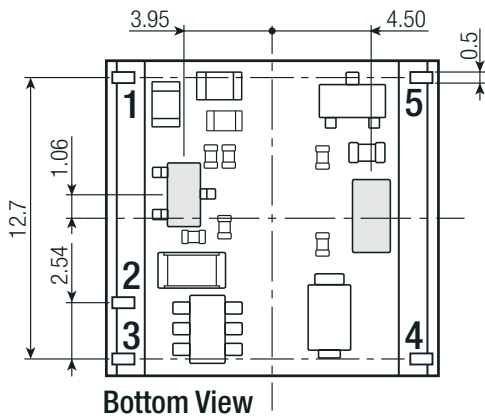
**Specifications** (measured @  $T_a = 25^\circ\text{C}$ , nominal  $V_{in}$ , full load and after warm up unless otherwise specified)

### Derating Graph

(@ Chamber and natural convection 0.1 m/s)



### Recommended Footprint Details



### Pin Connection

Pin #	Function
1	+Vin
2	-Vin
3	CTRL
4	+Vout
5	-Vout

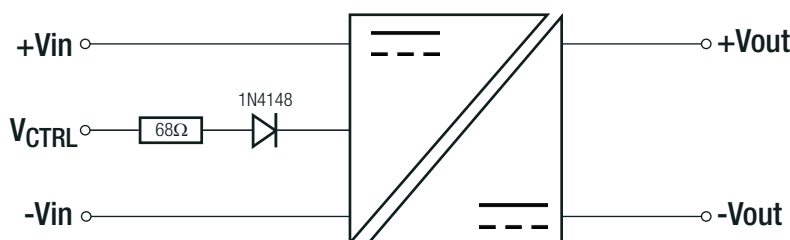
Tolerance: xx.x±0.5mm

xx.xx ±0.25mm

Pin dimension: ±0.1mm

## INSTALLATION and APPLICATION

### ON/OFF CTRL Circuit

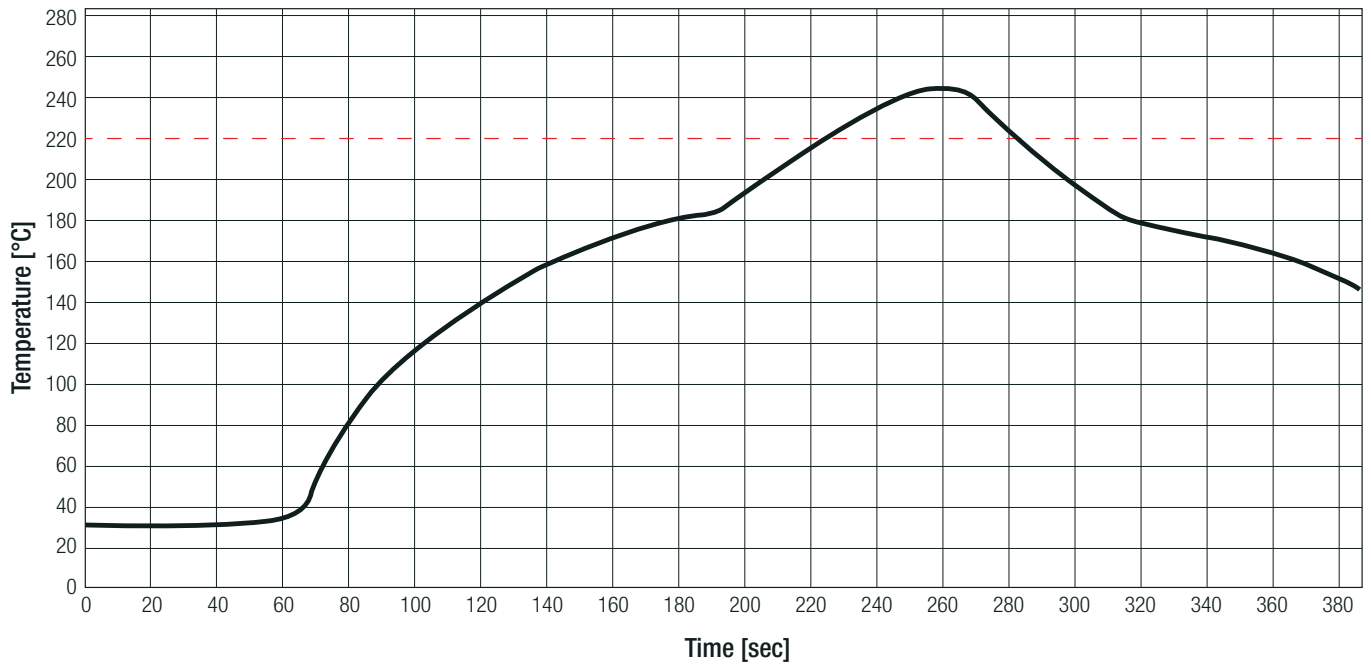


DC-DC ON: Open or  $0V < V_r < 0.8V_{DC}$   
 DC-DC OFF:  $2V < V_r < 6V_{DC}$

continued on next page

**Specifications** (measured @ Ta= 25°C, nominal Vin, full load and after warm up unless otherwise specified)

**Lead-free Recommended Solder Profile according to JEDEC STD-020D-01**



**PACKAGING INFORMATION**

Packaging Dimension (LxWxH)	tray carton	260.0 x 205.0 x 25.0mm
	tray	240.0 x 200.0 x 20.0mm
	tape and reel (-R) carton	385.0 x 375.0 x 70.0mm
	reel	330.0 x 50.0 x 330.0mm
Packaging Quantity	tray	30pcs
	tape and reel (-R)	200pcs
Tape Width		44mm
Storage Temperature Range		-55°C to +125°C
Storage Humidity	non-condensing	95% RH max.

The product information and specifications may be subject to changes even without prior written notice. The product has been designed for various applications; its suitability lies in the responsibility of each customer. The products are not authorized for use in safety-critical applications without RECOM's explicit written consent. A safety-critical application is an application where a failure may reasonably be expected to endanger or cause loss of life, inflict bodily harm or damage property. The applicant shall indemnify and hold harmless RECOM, its affiliated companies and its representatives against any damage claims in connection with the unauthorized use of RECOM products in such safety-critical applications.