



Analog Rotation Sensor V1 (SKU: DFR0054)

From Robot Wiki



Contents

- 1 Introduction
- 2 Specification
- 3 Pin Definition
- 4 Connection Diagram
- 5 Sample Code

Introduction

Analog Rotation Sensor V1 (SKU: DFR0054)

The *DFRobot Rotation Sensor V1* is arduino compatible and can be rotated upto 300-degree. It is based on the potentiometer. With the Arduino sensor expansion board, in combination, it can be very easy to achieve position-dependent interaction with the rotating effect or produce MIDI instrument.

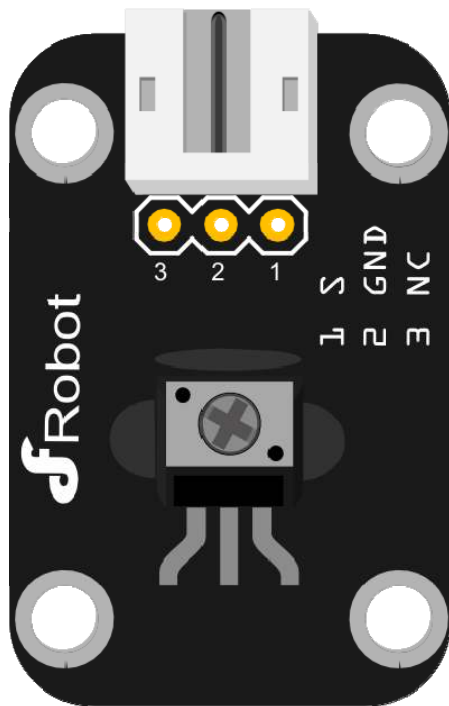
Specification

- Interface type: Analog
- 300 degree rotation sensor

Pin Definition

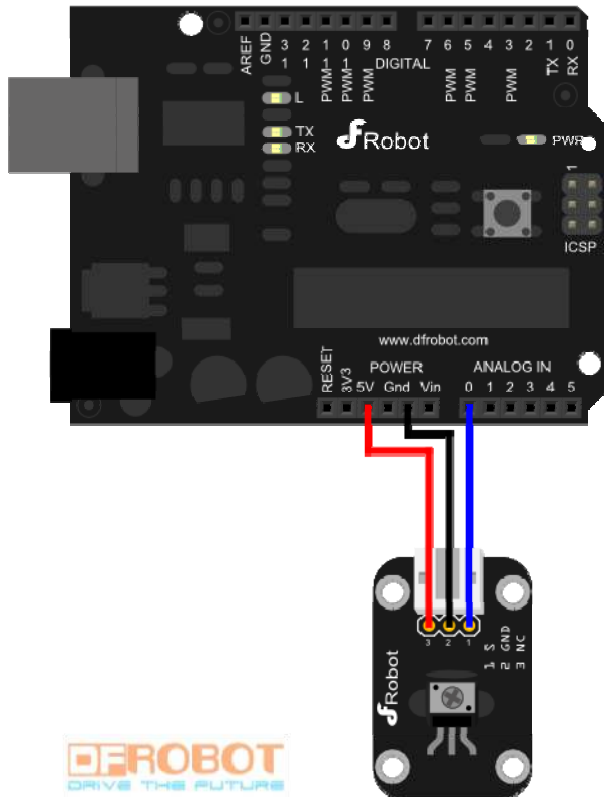
The definition of gas sensor pin is

1. Signal Output
2. GND
3. Power



Analog Sensor Pin Definition

Connection Diagram



Analog sensor connection diagram

Sample Code

```
// # Editor      : Lauren from DFRobot
// # Date        : 30.12.2011

// #
// # Editor      : Lauren from DFRobot
// # Date        : 17.01.2012
```

```
// # Product name: Rotation Sensor v1/v2 or Analog Slide Position Sensor
// # Product SKU : DFR0054/DFR0058/DFR0053
// # Version      : 1.0

// # Description:
// # the sample to drive some analog sensors

// # Connection:
// #           Signal output pin  -> Analog pin 0
// #

void setup()
{
  Serial.begin(9600);    //Set serial baud rate to 9600 bps
}
void loop()
{
  int val;
  val=analogRead(0);    //Read slider value from analog 0
  Serial.println(val,DEC); //Print the value to serial port
  delay(100);
}
```