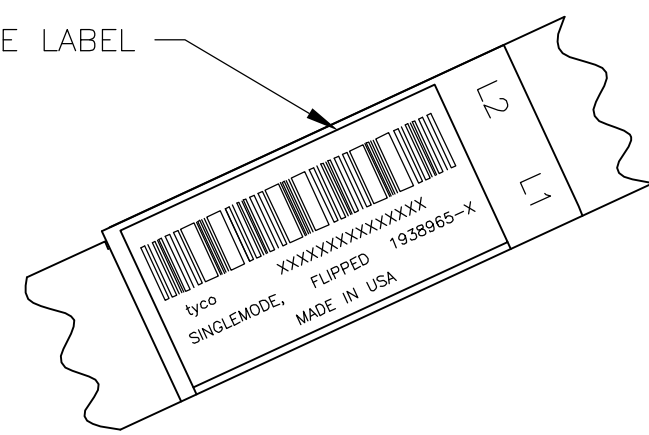
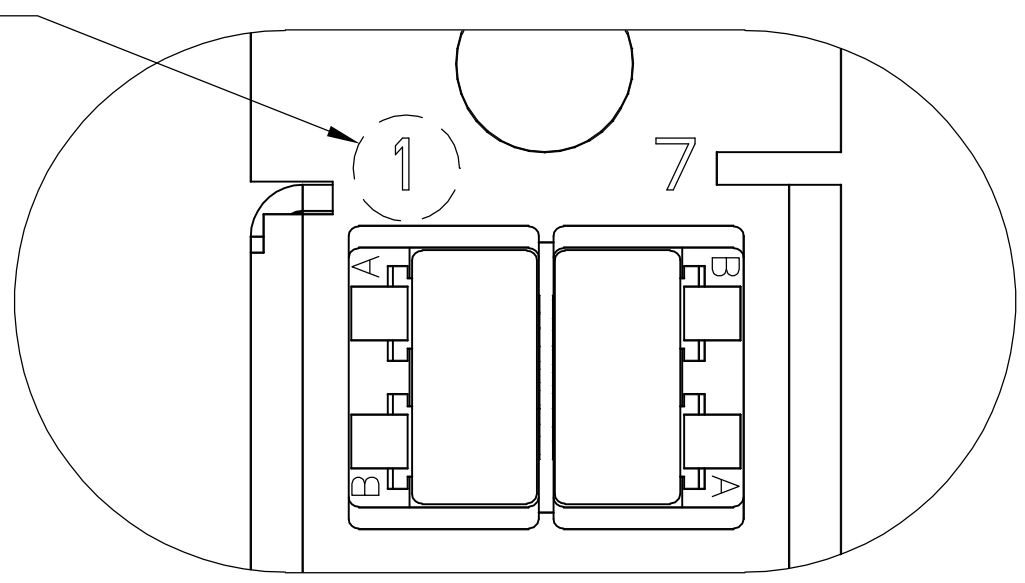
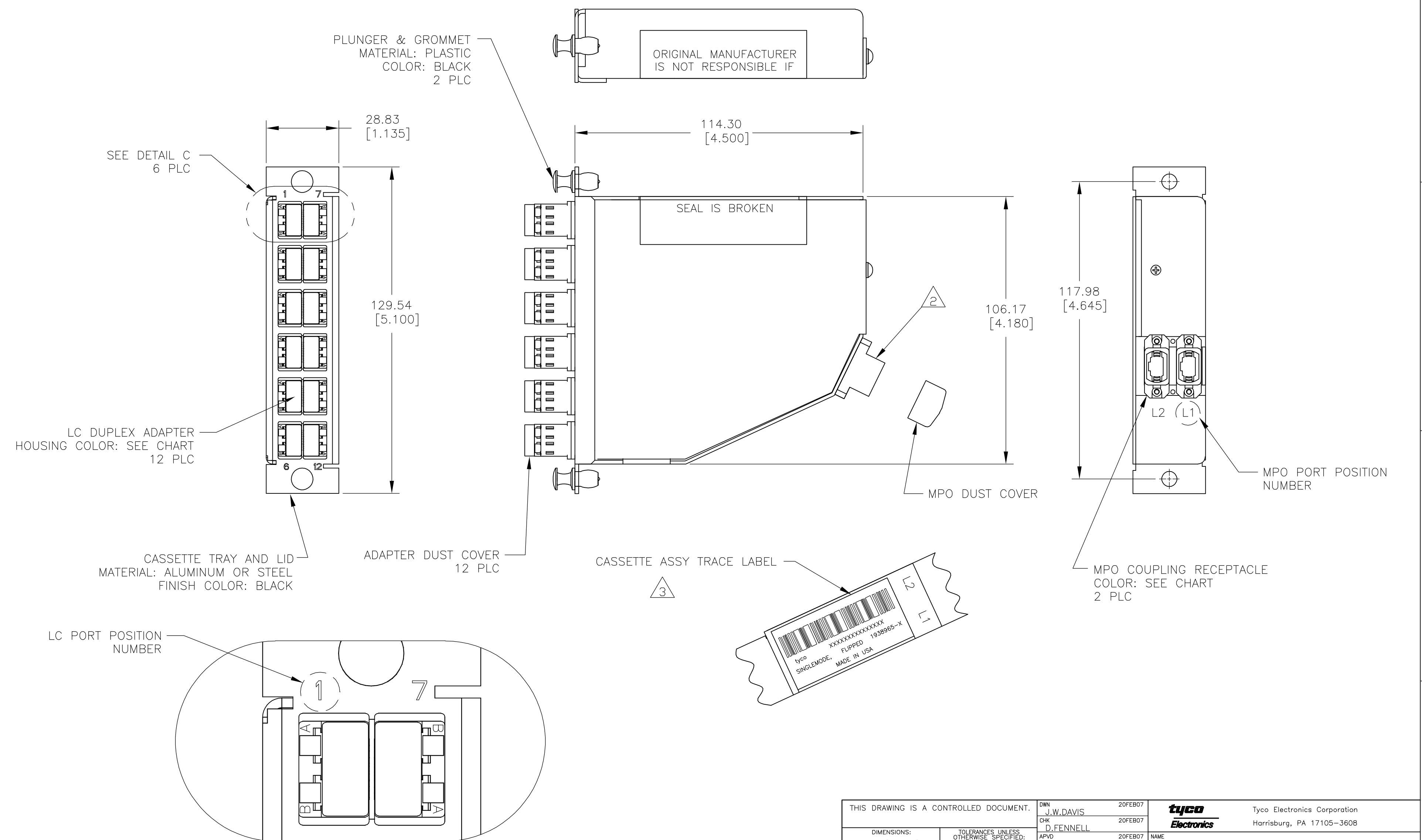


|     |      |           |     |             |         |     |      |
|-----|------|-----------|-----|-------------|---------|-----|------|
| LOC | DIST | REVISIONS |     |             |         |     |      |
| CE  | 16   | P         | LTR | DESCRIPTION | DATE    | DWN | APVD |
|     |      | A         |     | RELEASED    | 20FEB07 | JWD | DLF  |

D  
C  
B  
A

D  
C  
B  
A



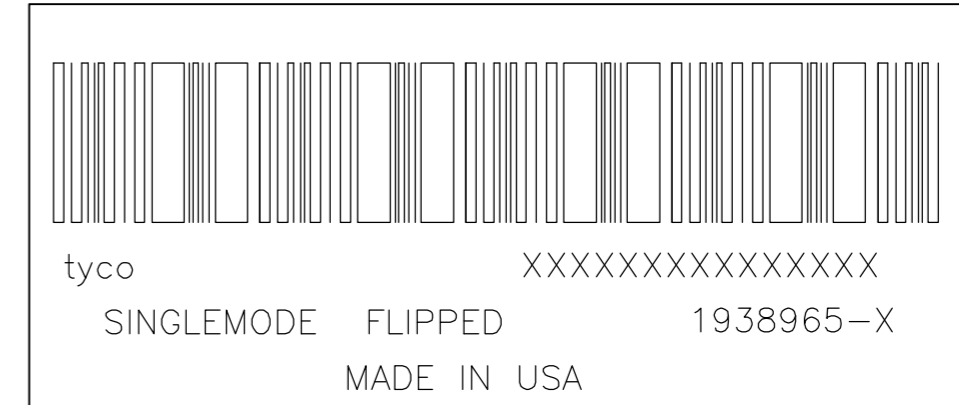
|   |  |  |  |
|---|--|--|--|
| THIS DRAWING IS A CONTROLLED DOCUMENT.  |  | DWN<br>J.W.DAVIS<br>20FEB07                | Tyco Electronics Corporation<br>Harrisburg, PA 17105-3608                  |
| DIMENSIONS:<br>mm [INCHES]  |  | CHK<br>D.FENNELL<br>20FEB07                |  |
| TOLERANCES UNLESS OTHERWISE SPECIFIED:  |  | APVD<br>D.FENNELL<br>20FEB07               | NAME<br>CASSSETTE ASSEMBLY, 24 FIBER, SINGLEMODE<br>MPO - LC PAIRS FLIPPED |
| 0 PLC ± -<br>1 PLC ± -<br>2 PLC ± -<br>3 PLC ± -<br>4 PLC ± -<br>ANGLES ± -<br>FINISH - |  | PRODUCT SPEC<br>-<br>APPLICATION SPEC<br>- | SIZE<br>A2   |
| MATERIAL<br>-   |  | WEIGHT<br>-                                | CAGE CODE<br>00779   |
|   |  | CUSTOMER DRAWING                           | DRAWING NO<br>1938965  |
|   |  | SCALE<br>NTS                               | RESTRICTED TO<br>-   |
|   |  | SHEET<br>1 of 2                            | REV<br>A   |

1938965

THIS DRAWING IS UNPUBLISHED. RELEASED FOR PUBLICATION  
 © COPYRIGHT BY TYCO ELECTRONICS CORPORATION. ALL RIGHTS RESERVED.

| LOC | DIST | REVISIONS   |      |     |      |
|-----|------|-------------|------|-----|------|
| P   | LTR  | DESCRIPTION | DATE | DWN | APVD |
| CE  | 16   | SEE SHEET 1 | -    | -   | -    |

1. MAXIMUM CASSETTE ASSEMBLY LOSS: 1.25dB.
2. WHITE MARKING ON MPO TO BE FACING TOWARD TOP OF CONNECTOR MODULE. WHITE MARK INDICATES FIBER 1 SIDE
3. SEE TRACE LABEL DETAIL
4. A COPY OF CASSETTE ASSEMBLY LOSS TEST DATA WILL BE PLACED INSIDE OR WITH THE UNIT PACKAGE. CASSETTES WILL BE TESTED AT 1310nm & 1550nm WAVELENGTHS.
5. PRODUCT AND PROCESSING MUST MEET REQUIREMENTS OF TYCO ELECTRONICS STANDARD 230-702



FIBER PATH – PAIRS FLIPPED

| MPO L1 PORT POSITION NO | MPO L2 PORT POSITION NO | LC PORT POSITION NO |
|-------------------------|-------------------------|---------------------|
| 1                       | -                       | 1A                  |
| 2                       | -                       | 1B                  |
| 3                       | -                       | 2A                  |
| 4                       | -                       | 2B                  |
| 5                       | -                       | 3A                  |
| 6                       | -                       | 3B                  |
| 7                       | -                       | 4A                  |
| 8                       | -                       | 4B                  |
| 9                       | -                       | 5A                  |
| 10                      | -                       | 5B                  |
| 11                      | -                       | 6A                  |
| 12                      | -                       | 6B                  |
| -                       | 1                       | 7A                  |
| -                       | 2                       | 7B                  |
| -                       | 3                       | 8A                  |
| -                       | 4                       | 8B                  |
| -                       | 5                       | 9A                  |
| -                       | 6                       | 9B                  |
| -                       | 7                       | 10A                 |
| -                       | 8                       | 10B                 |
| -                       | 9                       | 11A                 |
| -                       | 10                      | 11B                 |
| -                       | 11                      | 12A                 |
| -                       | 12                      | 12B                 |

|                                   |                         |             |
|-----------------------------------|-------------------------|-------------|
| AQUA SECURE                       | AQUA SECURE             | 1-1938965-1 |
| SLATE SECURE                      | SLATE SECURE            | 1-1938965-0 |
| ROSE SECURE                       | ROSE SECURE             | 1938965-9   |
| VIOLET SECURE                     | VIOLET SECURE           | 1938965-8   |
| BROWN SECURE                      | BROWN SECURE            | 1938965-7   |
| ORANGE SECURE                     | ORANGE SECURE           | 1938965-6   |
| YELLOW SECURE                     | YELLOW SECURE           | 1938965-5   |
| BLUE SECURE                       | BLUE SECURE             | 1938965-4   |
| GREEN SECURE                      | GREEN SECURE            | 1938965-3   |
| RED SECURE                        | RED SECURE              | 1938965-2   |
| MPO COUPLING BUSHING COLOR & TYPE | LC ADAPTER COLOR & TYPE | PART NUMBER |

|   |  |                        |   |                 |
|---|--|------------------------|---|-----------------|
| THIS DRAWING IS A CONTROLLED DOCUMENT.  |  | DWN J.W.DAVIS 20FEB07  | Tyco Electronics Corporation<br>Harrisburg, PA 17105-3608           |                 |
| DIMENSIONS: mm [INCHES]   |  | CHK D.FENNELL 20FEB07  |   |                 |
| TOLERANCES UNLESS OTHERWISE SPECIFIED:  |  | APVD D.FENNELL 20FEB07 | NAME CASSETTE ASSEMBLY, 24 FIBER, SINGLEMODE MPO - LC PAIRS FLIPPED |                 |
| 0 PLC ± -<br>1 PLC ± -<br>2 PLC ± -<br>3 PLC ± -<br>4 PLC ± -<br>ANGLES ± -<br>FINISH - |  | PRODUCT SPEC -         | RESTRICTED TO -   |                 |
| MATERIAL -  |  | APPLICATION SPEC -     | SIZE A2   | CAGE CODE 00779 |
|   |  | WEIGHT -               | DRAWING NO C=1938965  |                 |
|   |  | CUSTOMER DRAWING       | SCALE NTS   | SHEET 2 of 2    |

1938965