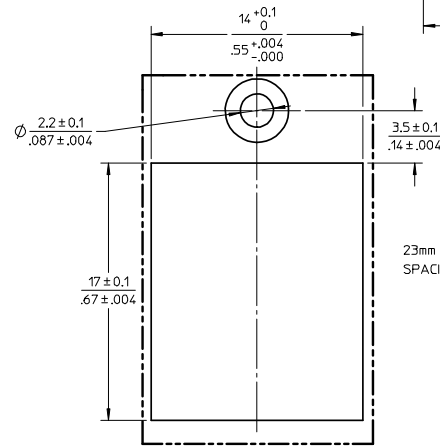
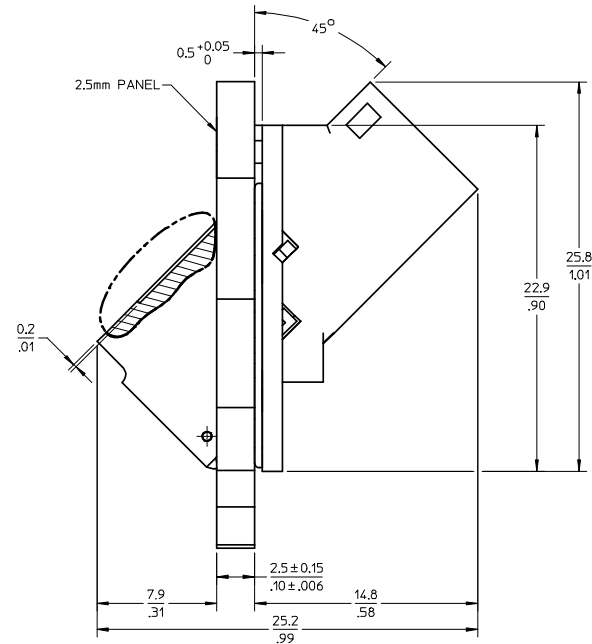
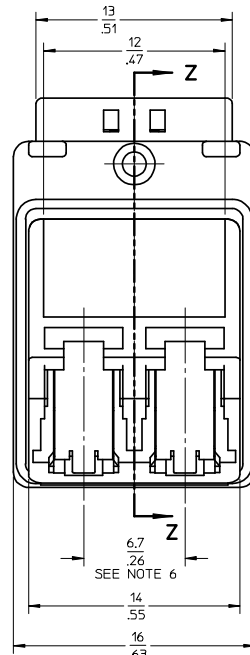
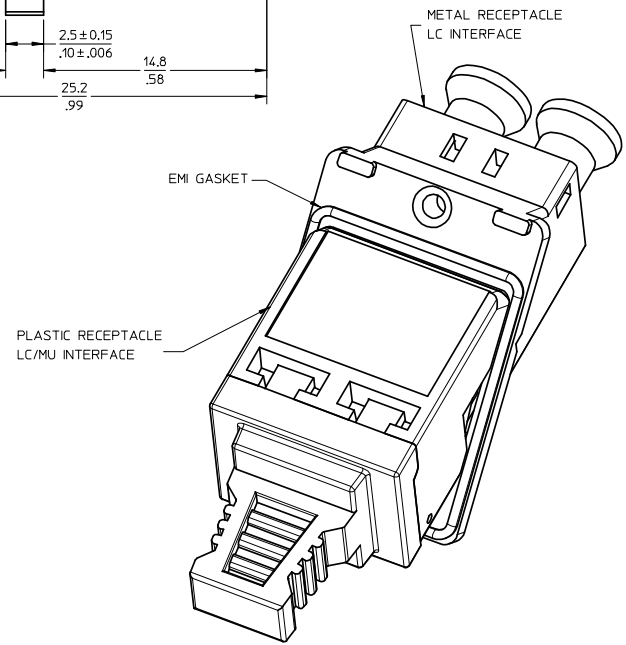


SECTION Z-Z



PANEL CUTOUT

23mm MINIMUM VERTICAL SPACING BETWEEN CUTOUPS



NOTES:

1. ALL DIMENSIONS ARE FOR REFERENCE ONLY.
2. PARTS SHOWN ASSEMBLED FOR CUSTOMER REFERENCE ONLY.
3. MATERIAL AND PLATING:
 - A. METAL RECEPTACLE HALF (LC INTERFACE) - ZINC DIE CAST W/ NICKEL PLATING
 - B. PLASTIC RECEPTACLE (LC/MU INTERFACE) - POLYETHERIMIDE (PEI) UL94 V-0
 - C. GASKET - SILICONE CONDUCTIVE ELASTOMER SNN 45.
 - D. SPLIT SLEEVE - ZIRCONIA
 - E. ALL OTHER PARTS - METAL.
4. LC DUPLEX WASH CAP (DUST CAP)-TPV UL94 V-0.
5. PACKAGING: FOR SHIPMENT OF THIS PRODUCT USE TRAY P/N 86934-1006 (NOT SHOWN).
6. 6.7mm BETWEEN CONNECTORS. ONLY SIMPLEX CONNECTORS MAY BE USED.
7. TO AVOID DAMAGING THE EMI GASKET, EXTRA CARE SHOULD BE TAKEN WHEN INSERTING ADAPTER INTO PANEL.

WORK AREA PLOT

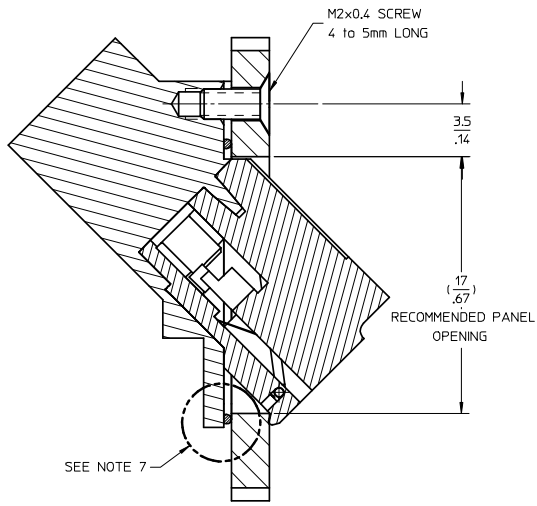
ENTER DESCRIPTION	2008/04/21
EC NO: MF2008-0252	2008/04/24
DRWN:SERNST	2008/04/24
CHKD: WCHEN	2008/04/28
APPR:WCHEN	

QUALITY SYMBOLS	▽=0
	▽=0

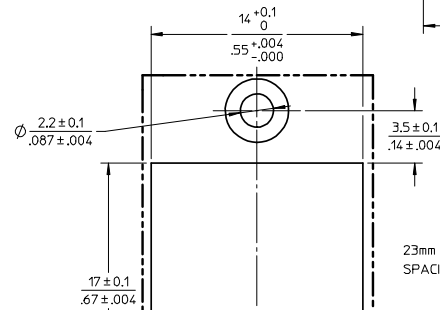
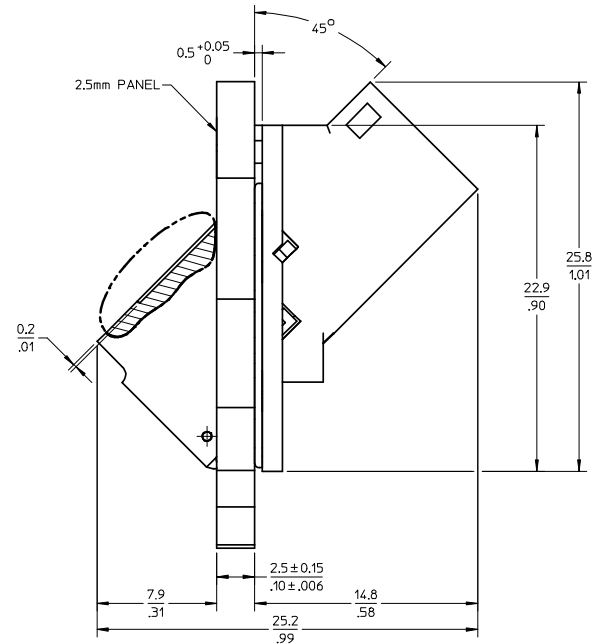
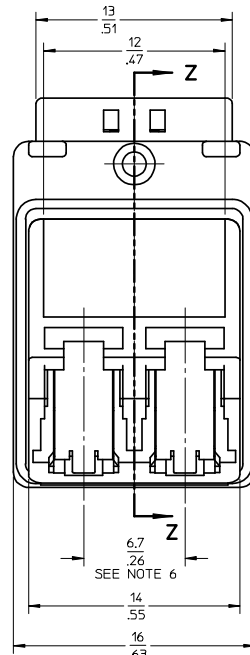
GENERAL TOLERANCES (UNLESS SPECIFIED)	
	mm
	INCH
4 PLACES	± --- ± ---
3 PLACES	± --- ± ---
2 PLACES	± --- ± ---
1 PLACE	± --- ± ---
ANGULAR ± 1 °	
DRAFT WHERE APPLICABLE MUST REMAIN WITHIN DIMENSIONS	

DIMENSION STYLE MM ONLY	
DRAWN BY	DATE
SERNST	2007/06/08
CHECKED BY	DATE
APPROVED BY	DATE
SM1GO	2007/06/08
MATERIAL NO.	DOCUMENT NO.
1061009000	SD-106100-9000
SIZE	
C	

SCALE	DESIGN UNITS	THIRD ANGLE PROJECTION
4:1	METRIC	
MULTI FORMAT (LC/MU) TO LC 45 DEG EMI ADAPTER (SCREW MOUNT)		
MOLEX INCORPORATED		
SHEET NO.		1 OF 1

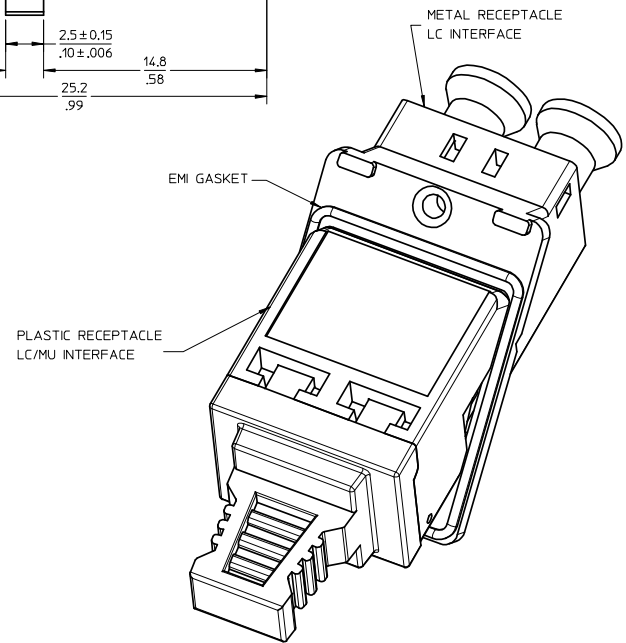


SECTION Z-Z



PANEL CUTOUT

23mm MINIMUM VERTICAL SPACING BETWEEN CUTOUPS



NOTES:

1. ALL DIMENSIONS ARE FOR REFERENCE ONLY.
2. PARTS SHOWN ASSEMBLED FOR CUSTOMER REFERENCE ONLY.
3. MATERIAL AND PLATING:
 - A. METAL RECEPTACLE HALF (LC INTERFACE) - ZINC DIE CAST W/ NICKEL PLATING
 - B. PLASTIC RECEPTACLE (LC/MU INTERFACE) - POLYETHER IMIDE (PEI) UL94 V-0
 - C. GASKET - SILICONE CONDUCTIVE ELASTOMER SNN 45.
 - D. SPLIT SLEEVE - ZIRCONIA
 - E. ALL OTHER PARTS - METAL.
4. LC DUPLEX WASH CAP (DUST CAP)-TPV UL94 V-0.
5. PACKAGING: FOR SHIPMENT OF THIS PRODUCT USE TRAY P/N 86934-1006 (NOT SHOWN).
6. 6.7mm BETWEEN CONNECTORS. ONLY SIMPLEX CONNECTORS MAY BE USED.
7. TO AVOID DAMAGING THE EMI GASKET, EXTRA CARE SHOULD BE TAKEN WHEN INSERTING ADAPTER INTO PANEL.



REV	DESCRIPTION
B	ENTER DESCRIPTION EC NO: MF2008-0252 DRWNS:SERNST CHKD: 2008/04/24 APPR:WCHEN 2008/04/28

QUALITY SYMBOLS
▽=0
▽=0

GENERAL TOLERANCES (UNLESS SPECIFIED)	
	ANGULAR ± 1°
DRAFT WHERE APPLICABLE MUST REMAIN WITHIN DIMENSIONS	

DIMENSION STYLE	
MM ONLY	
DRAWN BY	DATE
SERNST	2007/06/08
CHECKED BY	DATE
APPROVED BY	DATE
SM1GO	2007/06/08
MATERIAL NO.	DOCUMENT NO.
1061009000	SD-106100-9000
SIZE	SHEET NO.
C	1 OF 1

SCALE	DESIGN UNITS	THIRD ANGLE PROJECTION
4:1	METRIC	
MULTI FORMAT (LC/MU) TO LC 45 DEG EMI ADAPTER (SCREW MOUNT)		
MOLEX INCORPORATED		