

**DESIGNED & DIMENSIONED
IN MILLIMETERS [INCHES]**

TABLE 1	
BODY OPTION	"A"
BLANK	(No OF POS x 0.800[.0315]) + 4.500[.1772]
L	(No OF POS x 0.800[.0315]) + 4.500[.1772]
S	(No OF POS x 0.800[.0315]) + 1.600[.0630]

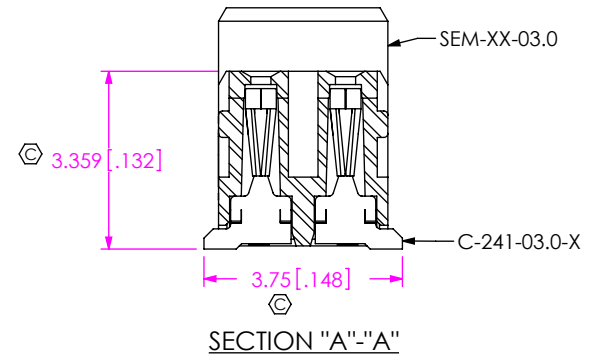
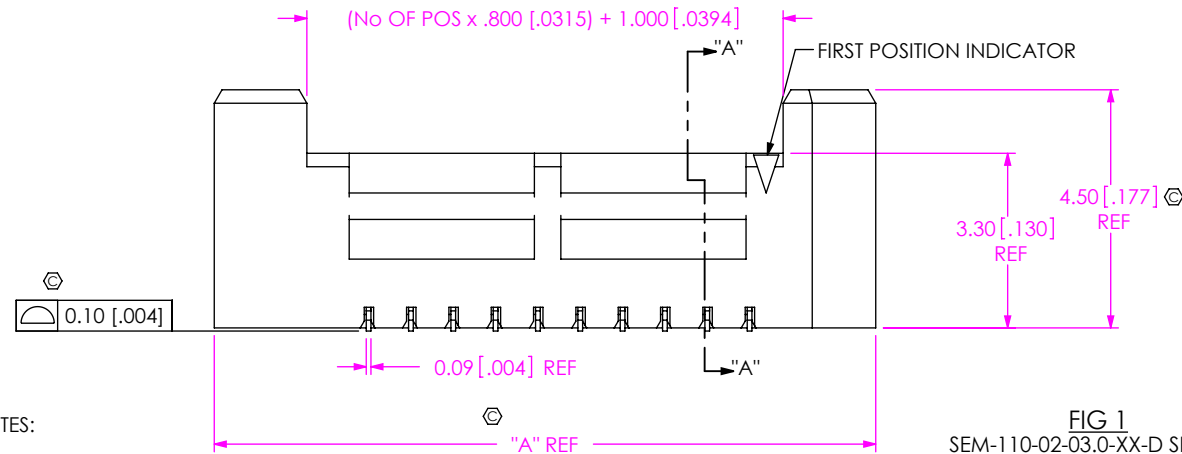
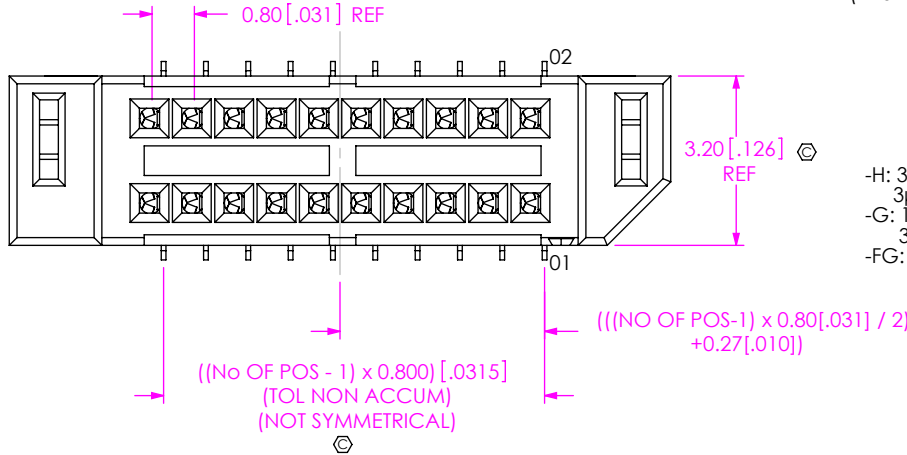


FIG 1
SEM-110-02-03.0-XX-D SHOWN

NOTES:

- ⊗ REPRESENTS A CRITICAL DIMENSION.
- MINIMUM PUSHOUT FORCE FOR CONTACT, LOCKING CLIP AND WELD TAB: 2.22N.
- HEIGHT VARIATION BETWEEN ANY TWO CONTACTS: 0.13 MAXIMUM.
- PARTS TO BE PACKAGED IN TRAYS UNLESS OTHERWISE SPECIFIED.
- POSITIONS -05 THRU -20 WILL HAVE ONLY ONE FRICTION LOCK.
POSITIONS -25 THRU -40 WILL HAVE TWO FRICTION LOCKS.
POSITIONS -45 THRU -50 WILL HAVE THREE FRICTION LOCKS.
- NOTE DELETED.
- NOTE DELETED.
- NOTE DELETED.
- NOTE DELETED.
- DUE TO HIGH AMOUNT OF INSERTION FORCE NEEDED, THE -LC OPTION IS NOT COMPATIBLE WITH AUTO-PLACEMENT. SAMTEC RECOMMENDS MANUAL PLACEMENT FOR ALL ASSEMBLIES WITH THE -LC OPTION.
- ORDERS WILL BE PACKAGED ACCORDING TO THE SAMTEC PACKAGING EFFICIENCY STANDARDS (SPES) FOUND ON WWW.SAMTEC.COM
- ATTACH LABEL -4X2 TO EACH REEL.

F:\DWG\MISC\MKTG\SEM-X-1XX-XX-XX.X-XX-D-XX-X-XX-MKT.SLDDRW

SEM-X-1XX-XX-XX.X-XX-D-XX-X-XX

BODY OPTION
(LEAVE BLANK IF OPTION NOT USED, USE SEM)
L: FRICTION LOCK (USE SEML)
S: SLIM (USE SEMS)
(NOT AVAILABLE WITH -A, -LC, OR -WT)
(ONLY AVAILABLE WITH -K-TR)

No OF POSITIONS
-05 THRU -50 (PER ROW)
(IN 5 POS INCREMENTS)

LEAD STYLE
-02: SURFACE MOUNT

STACK HEIGHT
-03.0: 3 MM

PLATING SPECIFICATION
-H: 30μ" HEAVY GOLD IN CONTACT AREA,
3μ" GOLD ON TAIL
-G: 10μ" GOLD IN CONTACT AREA,
3μ" GOLD ON TAIL
-FG: 3μ" FLASH GOLD ON ENTIRE
TERMINAL

PACKAGING
BLANK: TRAYS (SEE NOTE 4)
-TR: TAPE & REEL
(SEE NOTE 10 & 11)
-FR: FULL REEL QTY TAPE & REEL
(SEE NOTE 10 & 11)

PICK & PLACE PAD
-K: POLYIMIDE FILM
(USE K-DOT-.138-.250-.005,
SEE FIG 5, SHT 2)

OPTION
-A: ALIGNMENT PIN (SEE FIG 2, SHEET 2)
(NOT AVAILABLE WITH -LC OR -WT)
(NOT AVAILABLE ON SEML OR SEMS)
-LC: LOCKING CLIP (SEE FIG 3, SHEET 2
& NOTE 9)
(NOT AVAILABLE WITH -A OR -WT)
(NOT AVAILABLE ON SEML OR SEMS)
-WT: WELD TAB (SEE FIG 4, SHEET 2)
(NOT AVAILABLE WITH -A OR -LC)
(STANDARD ON SEML)
(NOT AVAILABLE ON SEMS)

ROW SPECIFICATION
-D: DOUBLE ROW

UNLESS OTHERWISE SPECIFIED,
DIMENSIONS ARE IN MILLIMETERS.
TOLERANCES ARE:
DECIMALS ANGLES
X.X: ±0.3 [.01] 2°
X.XX: ±0.13 [.005]
X.XXX: ±0.051 [.0020]

MATERIAL: DO NOT SCALE DRAWING
INSULATOR: VECTRA E130I
CONTACT: #25 BeCu, HALF HARD
LOCKING CLIP: PHOS BRONZE 510
WELD TAB: BRASS ALLOW 260, FULL HARD

SHEET SCALE: 7:1



520 PARK EAST BLVD, NEW ALBANY, IN 47150
PHONE: 812-944-6733 FAX: 812-948-5047
e-Mail info@SAMTEC.com code 55322

DESCRIPTION:
.8MM TIGER EYE MICRO SOCKET

DWG. NO.
SEM-X-1XX-XX-XX.X-XX-D-XX-X-XX

BY: B RAY 10-19-2007 SHEET 1 OF 2

FIG 2
SEM-110-02-03.0-XX-D-A SHOWN
(DIFFERENT AS SHOWN, OTHERWISE SAME AS FIG 1)

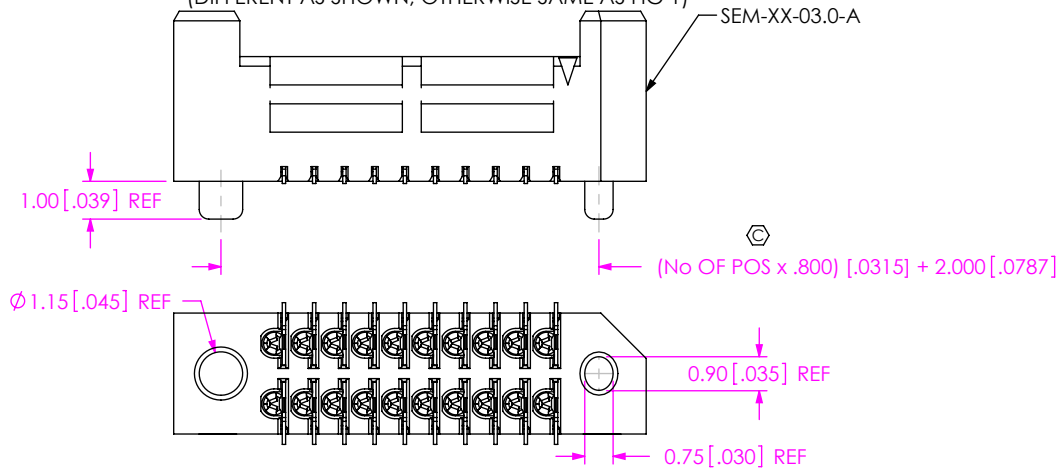


FIG 3
SEML-110-02-03.0-XX-D-LC SHOWN
(DIFFERENT AS SHOWN, OTHERWISE SAME AS FIG 1)

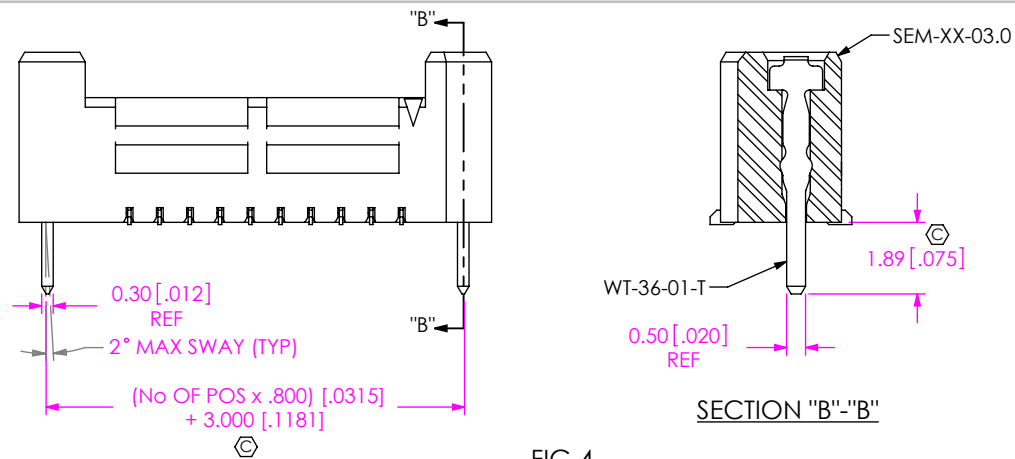
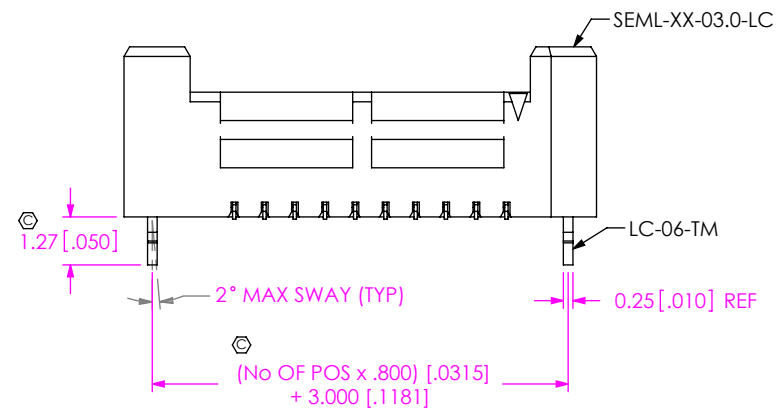
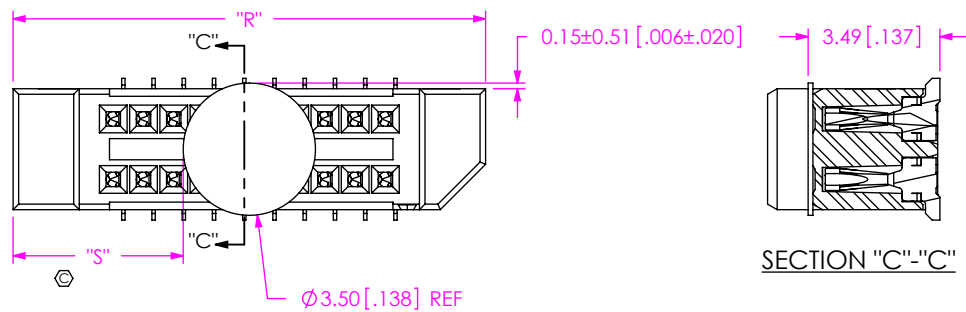


FIG 4
SEM-110-02-03.0-XX-D-WT SHOWN
(DIFFERENT AS SHOWN, OTHERWISE SAME AS FIG 1)



NOTE: "R" = OVERALL LENGTH (REF)
"S" = {"R" - 3.51 [.138]}/2 [.0787] ± 0.51 [.02]

FIG 5
SEM-110-02-03.0-XX-D-K SHOWN
(DIFFERENT AS SHOWN, OTHERWISE SAME AS FIG 1)

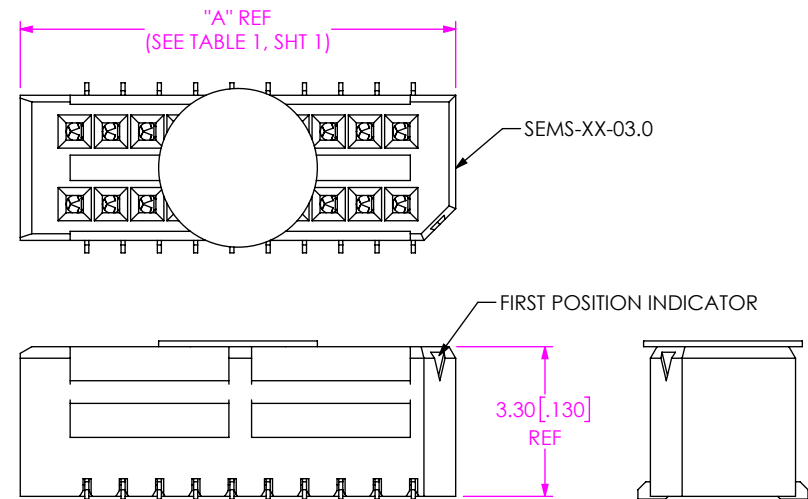


FIG 6
SEMS-110-02-03.0-XX-D SHOWN
(DIFFERENT AS SHOWN, OTHERWISE SAME AS FIG 1)

DO NOT SCALE DRAWING
SHEET SCALE: 5:1

samtec

520 PARK EAST BLVD, NEW ALBANY, IN 47150
PHONE: 812-944-6733 FAX: 812-948-5047
e-Mail info@SAMTEC.com code 55322

DESCRIPTION:
.8MM TIGER EYE MICRO SOCKET

DWG. NO.
SEM-X-1XX-XX-XX.X-XX-D-XX-X-XX

BY: B RAY 10-19-2007 SHEET 2 OF 2