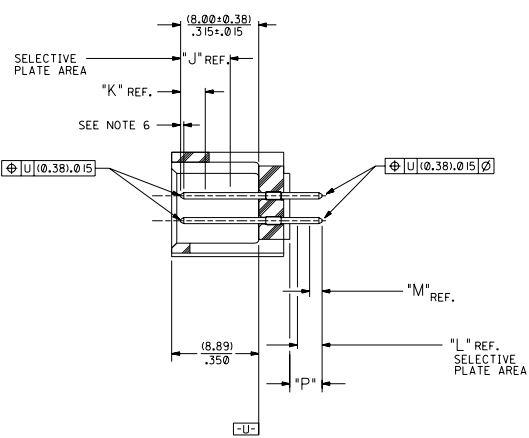


RECOMMENDED P.C. BOARD HOLE LAYOUT



SECTION J-J

NOTES:

- 1- 20 CIRCUIT SIZE SHOWN FOR ILLUSTRATION PURPOSES.
- 2- PIN PUSHOUT FORCE: (17.79 N)/4 LBS.
- 3- PINS MUST MEET SOLDERABILITY SPEC. MIL-STD-202 METHOD 208B.
- 4- WINDOW NOT AVAILABLE ON 6 AND 8 CIRCUIT SIZE.
- 5- FOR CHARTED DIMENSIONS AND ASSEMBLY NO.S NOT SHOWN ON THIS SHEET - SEE SHEET 2.
- 6- ROW TO ROW PIN HEIGHT VARIATION MUST NOT EXCEED (0.13)/.005 IN.
- 7- PRODUCT CONFORMS TO PS-8723.

MATERIAL:

SHROUDED WAFER: GLASS FILLED POLYESTER, 94V-0; COLOR: BLACK.
PINS: PHOSPHOR BRONZE,
SEE SHEET 2 FOR FINISHES.

ASSEMBLY STYLE "A" AND "B"

| CKT. | DIM. "A" | | DIM. "B" | | DIM. "C" | | DIM. "D" | | DIM. "E" | |
|------|----------------|------------------|------------------|-----------------|------------------|------|----------|------|----------|------|
| | INCH | MILL | INCH | MILL | INCH | MILL | INCH | MILL | INCH | MILL |
| 06 | (1.68) .066 | (8.43) .332 | (5.08) .200 | (1.68) .066 | | | | | | |
| 08 | (1.68) .066 | (10.97) .432 | (7.62) .300 | (1.68) .066 | | | | | | |
| 10 | (1.68) .066 | (13.51) .532 | (10.16) .400 | (4.22) .166 | | | | | | |
| 12 | (1.68) .066 | (16.05) .632 | (12.70) .500 | (4.22) .166 | | | | | | |
| 14 | (1.68) .066 | (18.59) .732 | (15.24) .600 | (16.76) .266 | | | | | | |
| 16 | (1.68) .066 | (21.13) .832 | (17.78) .700 | (16.76) .266 | | | | | | |
| 18 | (1.68) .066 | (23.67) .932 | (20.32) .800 | (9.30) .366 | | | | | | |
| 20 | (1.68) .066 | (26.21) .1032 | (22.86) .900 | (1.68) .066 | (19.46) .766 | | | | | |
| 22 | (1.68) .066 | (28.75) .1132 | (25.40) .1000 | (1.68) .066 | (22.00) .866 | | | | | |
| 24 | (1.68) .066 | (31.29) .1232 | (27.94) .1100 | (1.68) .066 | (24.54) .966 | | | | | |
| 26 | (1.68) .066 | (33.83) .1332 | (30.48) .1200 | (1.68) .066 | (27.08) .1066 | | | | | |
| 28 | (1.68) .066 | (36.37) .1432 | (33.02) .1300 | (1.68) .066 | (29.62) .1166 | | | | | |
| 30 | (1.68) .066 | (38.91) .1532 | (35.56) .1400 | (1.68) .066 | (32.16) .1266 | | | | | |
| 32 | (1.68) .066 | (41.45) .1632 | (38.10) .1500 | (1.68) .066 | (34.70) .1366 | | | | | |
| 34 | (1.68) .066 | (43.99) .1732 | (40.64) .1600 | (1.68) .066 | (37.24) .1466 | | | | | |
| 36 | (1.68) .066 | (46.53) .1832 | (43.18) .1700 | (1.68) .066 | (39.78) .1566 | | | | | |
| 38 | (1.68) .066 | (49.07) .1932 | (45.72) .1800 | (1.68) .066 | (42.32) .1666 | | | | | |
| 40 | (1.68) .066 | (51.61) .2032 | (48.26) .1900 | (1.68) .066 | (44.86) .1766 | | | | | |
| 42 | (1.68) .066 | (54.15) .2132 | (50.80) .2000 | (1.68) .066 | (47.40) .1866 | | | | | |
| 44 | (1.68) .066 | (56.69) .2232 | (53.34) .2100 | (1.68) .066 | (49.94) .1966 | | | | | |
| 46 | (1.68) .066 | (59.23) .2332 | (55.88) .2200 | (1.68) .066 | (52.48) .2066 | | | | | |
| 48 | (1.68) .066 | (61.77) .2432 | (58.42) .2300 | (1.68) .066 | (55.02) .2166 | | | | | |
| 50 | (1.68) .066 | (64.31) .2532 | (60.96) .2400 | (1.68) .066 | (57.56) .2266 | | | | | |
| 52 | (1.68) .066 | (66.85) .2632 | (63.50) .2500 | (1.68) .066 | (60.10) .2366 | | | | | |
| 54 | (1.68) .066 | (69.39) .2732 | (66.04) .2600 | (1.68) .066 | (62.64) .2466 | | | | | |
| 56 | (1.68) .066 | (71.93) .2832 | (68.58) .2700 | (1.68) .066 | (65.18) .2566 | | | | | |
| 58 | (1.68) .066 | (74.47) .2932 | (71.12) .2800 | (1.68) .066 | (67.72) .2666 | | | | | |
| 60 | (1.68) .066 | (77.01) .3032 | (73.66) .2900 | (1.68) .066 | (70.26) .2766 | | | | | |
| 62 | (1.68) .066 | (79.55) .3132 | (76.20) .3000 | (1.68) .066 | (72.80) .2866 | | | | | |
| 64 | (1.68) .066 | (82.09) .3232 | (78.74) .3100 | (1.68) .066 | (75.34) .2966 | | | | | |
| 66 | (1.68) .066 | (84.63) .3332 | (81.28) .3200 | (1.68) .066 | (77.88) .3066 | | | | | |
| 68 | (1.68) .066 | (87.17) .3432 | (83.82) .3300 | (1.68) .066 | (80.42) .3166 | | | | | |
| 70 | (1.68) .066 | (89.71) .3532 | (86.36) .3400 | (1.68) .066 | (82.96) .3266 | | | | | |
| 72 | (1.68) .066 | (92.25) .3632 | (88.90) .3500 | (1.68) .066 | (85.50) .3366 | | | | | |

- U ADD -3803 OPT
DCP2004-2268
DMORGAN 04/05/20
- T LEAD FREE
USP2004-1770
R WHITE 04/04/26
- S ADD -3802 OPTION
ECN #022004-052
DMORGAN 04/01/2
- R2 TAB DIF DIM 6 CIR
ECN #010999-0145
DMORGAN 56/09/01

- R1 ADD WDG LATCH NOTE
ECN #010998-0399
DMORGAN 56/06/23
- R ADDED SHEET 7
- O REMOVE FDP NO.S
PER ECR NO US0225
05-04-93

- P CHGD WINDOW NOTES
PER ECR NO US0316
05-04-93
- O CHANGED MATERIAL
PER ECR NO US0146
01-22-93
- R2 REVISED A REDRAWN
PER ECR NO US0173
05-29-92
- LTR REVISIONS

DIMENSIONS SHOWN METRIC INCH
 UNLESS OTHERWISE SPECIFIED
 1/16" = 0.0625" 1/32" = 0.03125" 1/64" = 0.015625"

SALES ASSEMBLY
 WAFER - STRAIGHT MT. FULLY SHROUDED
 .1000 GRID - FOR USE W/ .0025 SQ. PINS
 WITH .066 END WALLS

MOLEX INCORPORATED
 1 OF 7 92/07/17

SEE CHART SDA-8723-*****

DIMENSIONS SHOWN METRIC INCH
 UNLESS OTHERWISE SPECIFIED
 1/16" = 0.0625" 1/32" = 0.03125" 1/64" = 0.015625"

SALES ASSEMBLY
 WAFER - STRAIGHT MT. FULLY SHROUDED
 .1000 GRID - FOR USE W/ .0025 SQ. PINS
 WITH .066 END WALLS

MOLEX INCORPORATED
 1 OF 7 92/07/17

SEE CHART SDA-8723-*****

DIMENSIONS SHOWN METRIC INCH
 UNLESS OTHERWISE SPECIFIED
 1/16" = 0.0625" 1/32" = 0.03125" 1/64" = 0.015625"

SALES ASSEMBLY
 WAFER - STRAIGHT MT. FULLY SHROUDED
 .1000 GRID - FOR USE W/ .0025 SQ. PINS
 WITH .066 END WALLS

MOLEX INCORPORATED
 1 OF 7 92/07/17

SEE CHART SDA-8723-*****

