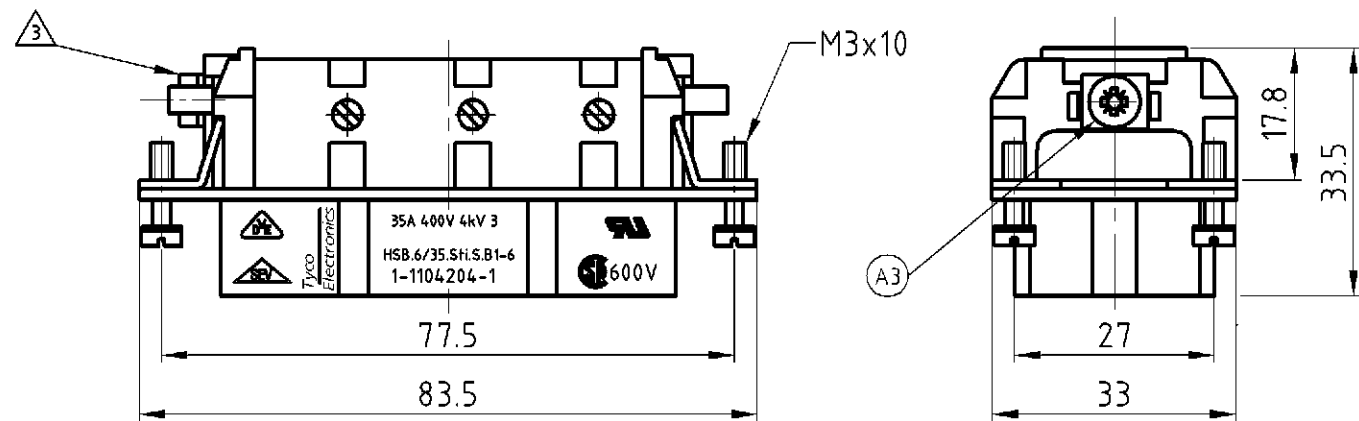


THIS DRAWING IS UNPUBLISHED.  
 VERTRÄULICHE UNVERÖFFENTLICHTE ZEICHNUNG  
 RELEASED FOR PUBLICATION  
 FREI FUER VERÖFFENTLICHUNG  
 ,1997  
 BY AMP INCORPORATED. ALL RIGHTS RESERVED.  
 ALLE RECHTE VORBEHALTEN

MATED WITH:  
 PASSEND ZU:  
 Bg6

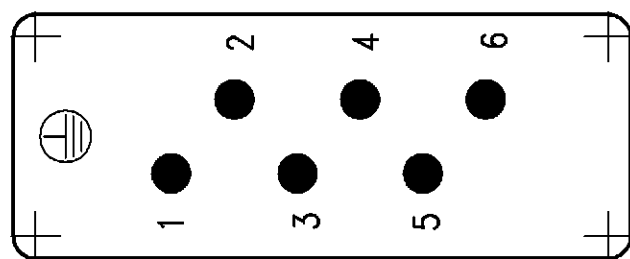
LOC		DIST		REVISIONS ÄNDERUNGEN			
P	LTR	DESCRIPTION BESCHREIBUNG		DATE	DWN	APVD	
A1	-			30.08.06	SR	SM	
PROJEKT NR.:				Notes and design changed ECR-06-020881			



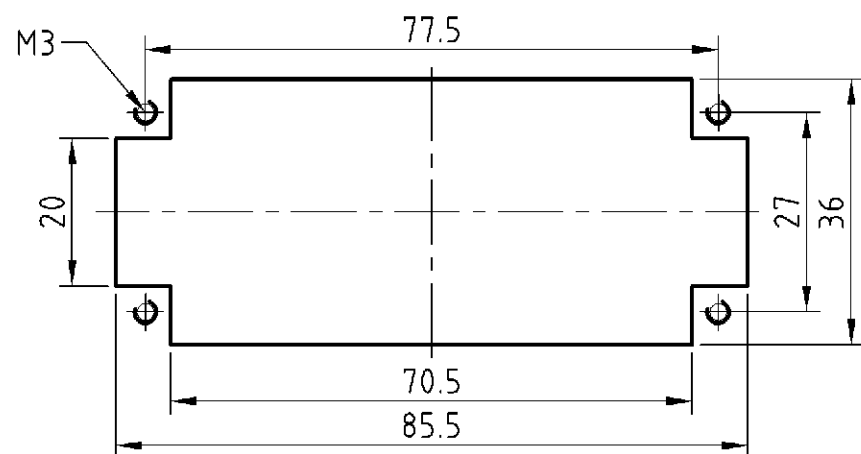
NOTES

- ① FINISH: CONTACT , AG
- ② POWER CONTACT: 1 TO 6  
OUTER DIMENSIONS OF INSULATION: MAX. Ø 7.0 MM
- ③ GROUNDING CONTACT
- ④ SUITABLE HOOD SIZE 6: SERIES HB; HD; EMV; HIP
- ⑤ STANDARDS:  
DIN EN 61984; DIN EN 60664-1
- ⑥ PACKAGING: 5 PIECES IN A CARTON
- ⑦ PACKAGING: 270 PIECES IN A BOX

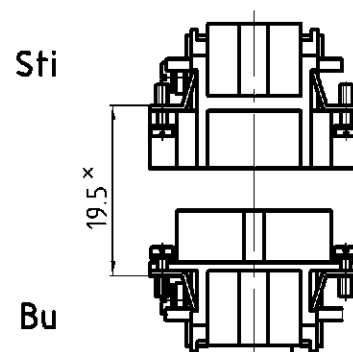
Contact arrangement view from termination side



Panel cut-out for contact insert when used without housing



Assembling instruction



X Distance for guaranteed contact max: 21 mm

1	1	Female insert	beige	1	REMARKS
0-11-1					
①	⑥	THIS DRAWING IS A CONTROLLED DOCUMENT FOR AMP INCORPORATED. IT IS SUBJECT TO CHANGE AND THE CONTROLLING ENGINEERING ORGANIZATION SHOULD BE CONTACTED FOR THE LATEST REVISION. DIESES ZEICHNUNGSDOKUMENT WIRD DURCH AMP INCORPORATED KONTROLLIERT. ÄNDERUNGEN, DIE DEM TECHNISCHEN FORTSCHRITT DIENEN, SIND VORBEHALTEN. DEN JEWELN LETZTGUELTIGEN ÄNDERUNGSSTAND ERFAHREN SIE AUF ANFRAGE.		DWN Schweiger 18.06.1997	HTS Elektrotechnik 53819 Neunkirchen, Germany
		DIMENSIONS: DIMENSIONEN: mm		CHK Kramer 04.06.98	
ORDERING TEXT / BESTELLTEXT		TOLERANCES UNLESS OTHERWISE SPECIFIED: ALLGEMEINTOLERANZEN		APVD -	NAME
HSB.6/35.Bu.S.B1-6.KM		p. ISO 8015 p. ISO 2768 - mH - E p. DIN 16901 - 14.0		PRODUCT SPEC PRODUKTSPEZ. 108-74006	FEMALE INSERT
HSB.6/35.Bu.S.B1-6		0 PLC # 1 PLC # 2 PLC # 3 PLC #		APPLICATION SPEC VERARBEITUNGSSPEZ. 114-74007	HSB.6/35.Bu.S.B1-6
		MATERIAL		WEIGHT GEWICHT 90 g	SIZE CAGE CODE A3 00779
		FINISH / OBERFLÄCHE / FARBE		DRAWING NO ZEICHNUNGS-NR. C-1104205	RESTRICTED TO NUR FUER
		①		CUSTOMER DRAWING	MASSTAB 1:1 BLATT 1 OF 1 REV A3