

EMI/EMC FILTER

RoHS

TB1(Plastic Case) SERIES



Features

- 2 Line, 2 Stage Filter
- Easy connection and installation
- Excellent filtering characteristics for both differential mode and common mode
- Safety approval : cULus, cCSAus, SEMKO+ENEC, CQC, KC, CE
(TB1-06****, TB1-10****, TB1-16****, TB1-20****, TB1-30****)
cCSAus, SEMKO+ENEC, KC, CE
(TB1-40****, TB1*****H)

Applications

- Battery, ESS equipments
- Use in medical/industrial equipment, gaming, other ground current-sensitive applications
- Electric vehicle charger
- For equipment requiring very high noise attenuation
- Measuring and testing instruments

Specifications

Model	Rated Voltage (AC, DC)	Rated Current	Leakage Current (250V AC)	Operating Temperature
TB1-06A080(H)	250V (50/60Hz)	6A	0.8mA max.	-25°C to +85°C (TB1-*****) -25°C to +100°C (TB1-*****H) Including temperature rise Derating Curve
TB1-10A080(H)		10A		
TB1-16A080(H)		16A		
TB1-20A080(H)		20A		
TB1-30A080(H)		30A		
TB1-40A080(H)		40A		
TB1-06A0D0(H)		6A	0.1mA	
TB1-10A0D0(H)		10A		
TB1-16A0D0(H)		16A		
TB1-20A0D0(H)		20A		
TB1-30A0D0(H)		30A		
TB1-40A0D0(H)		40A		

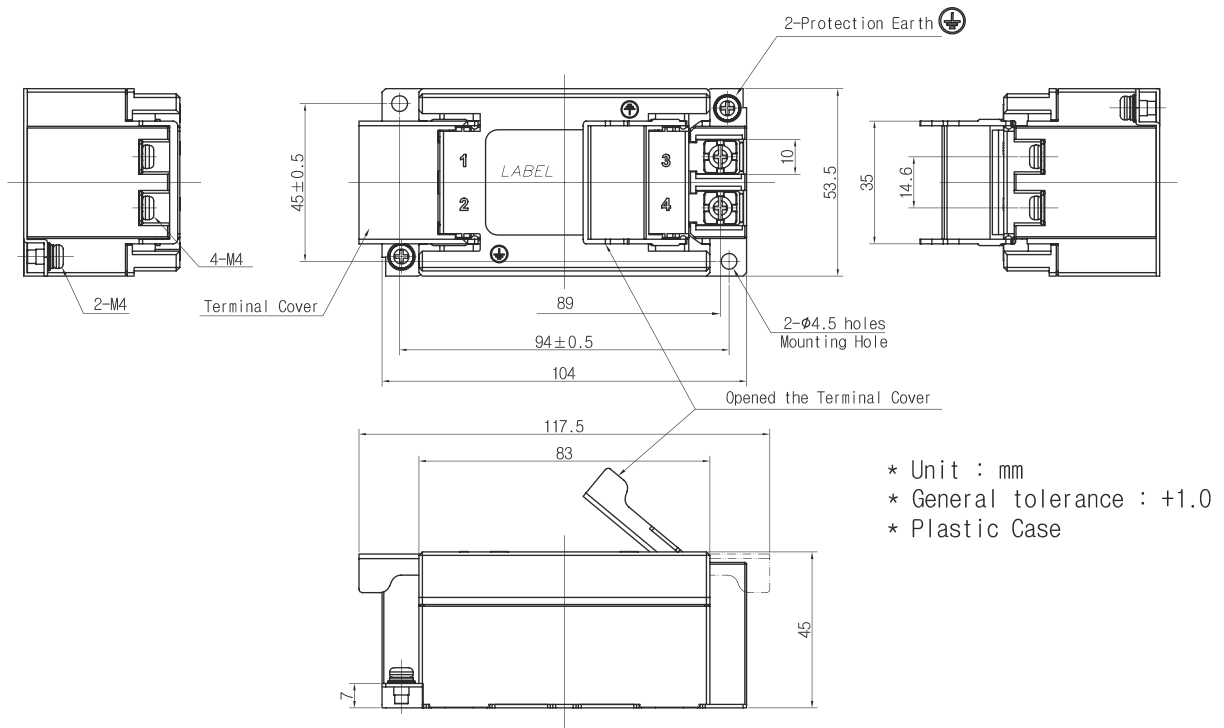
※ Many variations in X and Y capacitor value are available with approvals. For the details, consult with local agent.

Note
 Withstand Voltage : 4000V AC or 1500V AC for 1 minute between line and ground
 (TB1-**A0D0*: 4000VAC, TB1-**A080*: 1500VAC)
 Insulation Resistance : 300 Mohm min. at 500V DC between line and ground

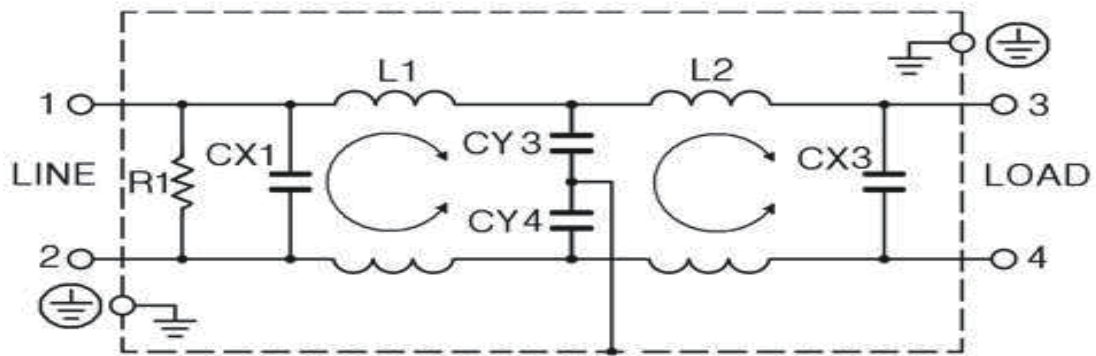
Model Number Construction

TB1	06	A	ODO	H
Series name : 2 line, 2 stage	Rated Current 06 = 6A 10 = 10A 16 = 16A 20 = 20A 30 = 30A 40 = 40A	Line to Line Cap.code Input/output : 1.0 μF (middle line : none)	Line to GND Cap.code (only middle line) ODO : 470 pF (Y1 class) O80 : 3300 pF (Y2 class)	Characteristic Option Null : General H : High Attenuation

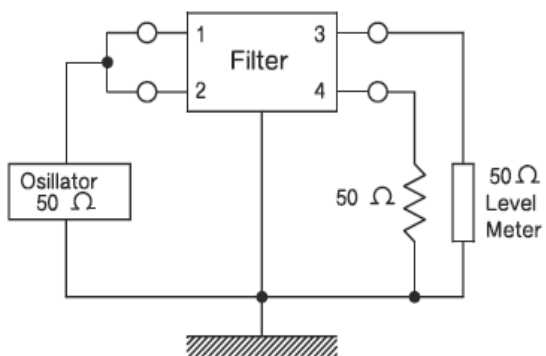
Shapes and Dimensions



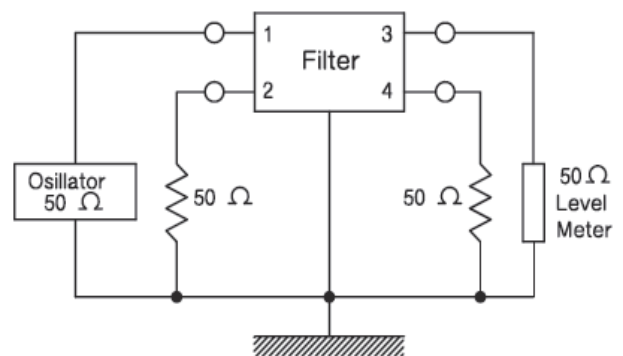
Circuit Diagram



Measurement Configuration



Common mode



Differential mode

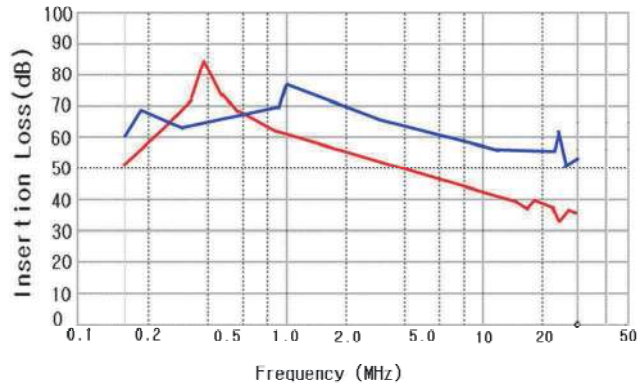
Attenuation Characteristics

Common mode (—)

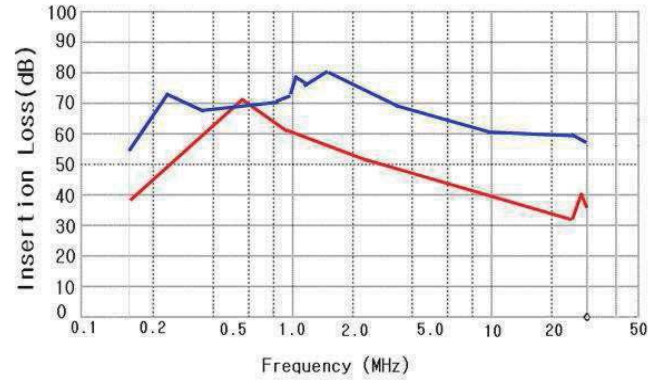
Differential mode (—)

TB1-**A0D0 Series

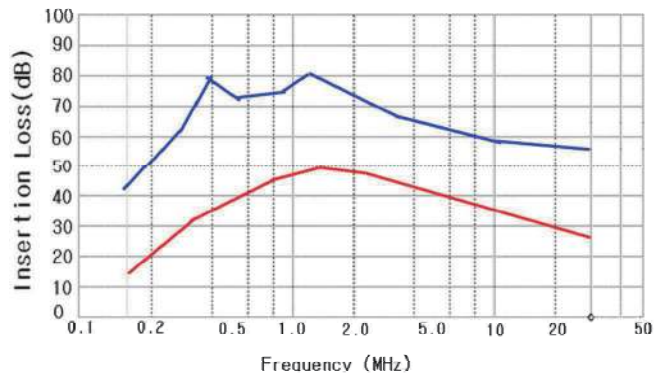
TB1-06A0D0



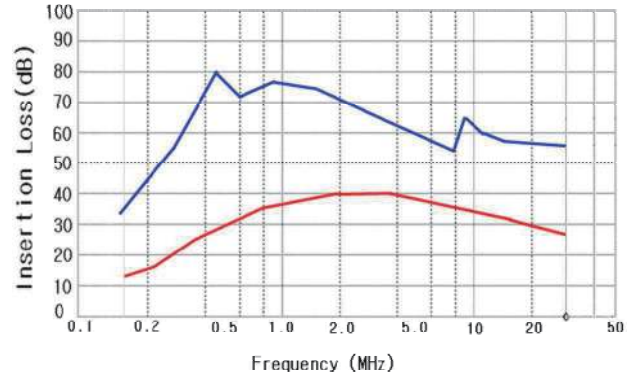
TB1-10A0D0



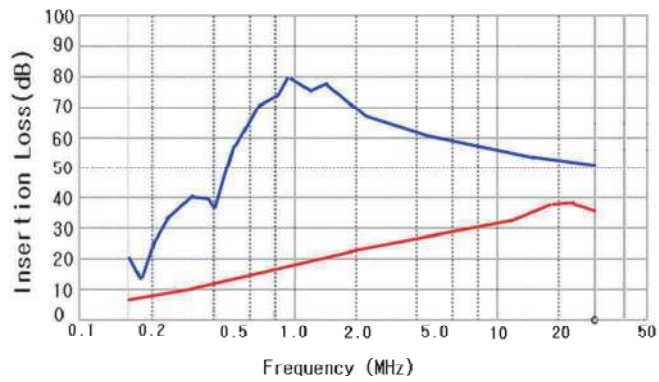
TB1-16A0D0



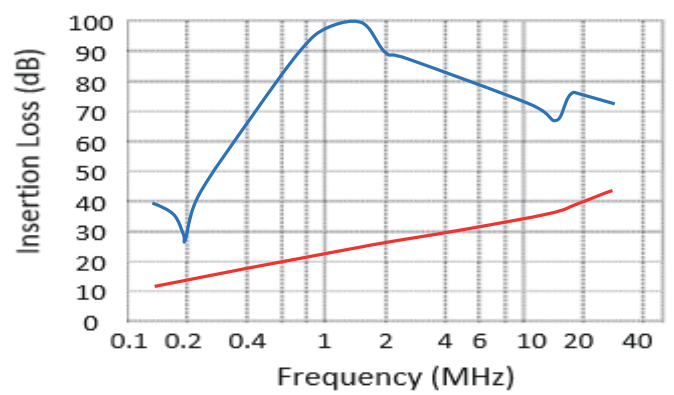
TB1-20A0D0



TB1-30A0D0



TB1-40A0D0



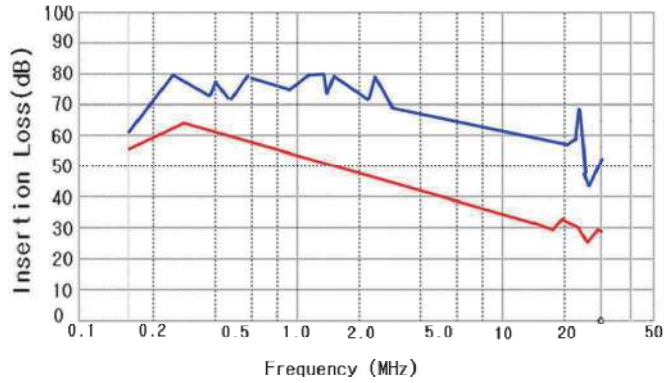
Attenuation Characteristics

Common mode (—)

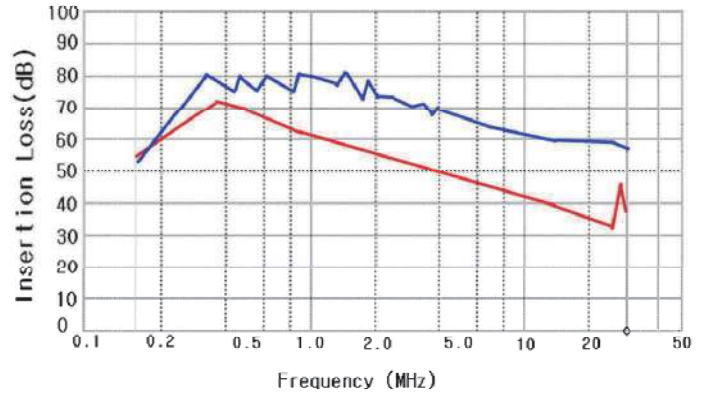
Differential mode (—)

TB1-**A080 Series

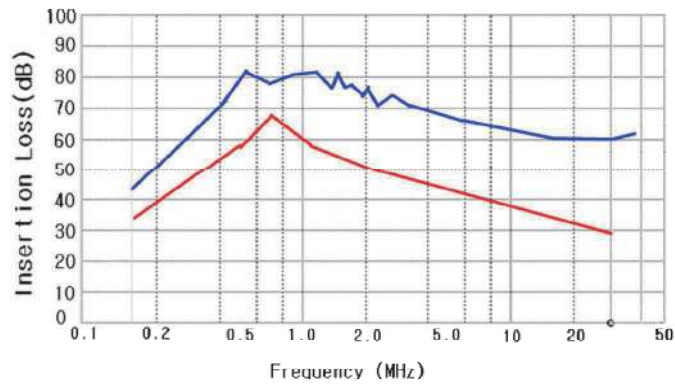
TB1-06A080



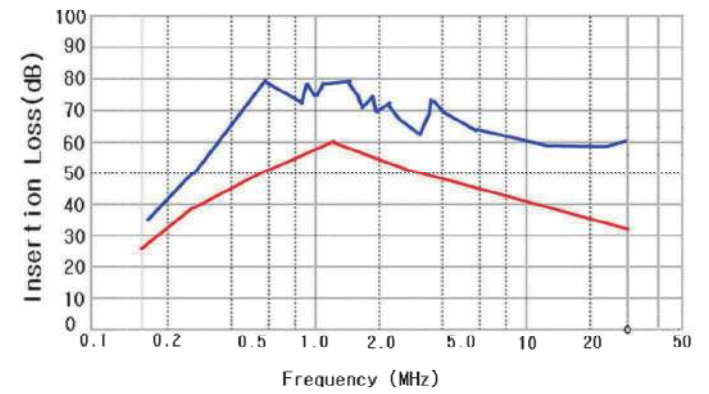
TB1-10A080



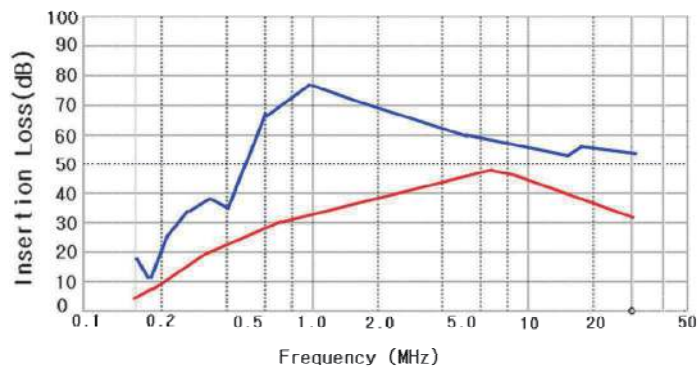
TB1-16A080



TB1-20A080



TB1-30A080



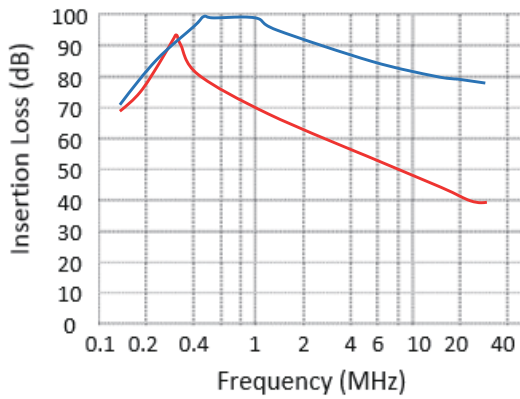
Attenuation Characteristics

Common mode (—)

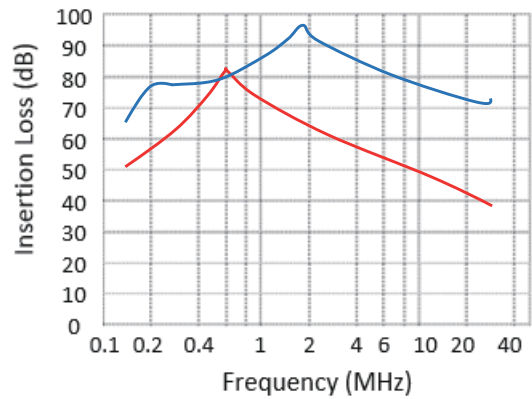
Differential mode (—)

TB1-**A0D0H Series

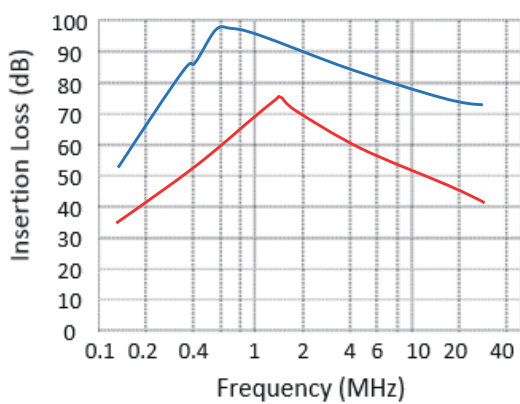
TB1-06A0D0H



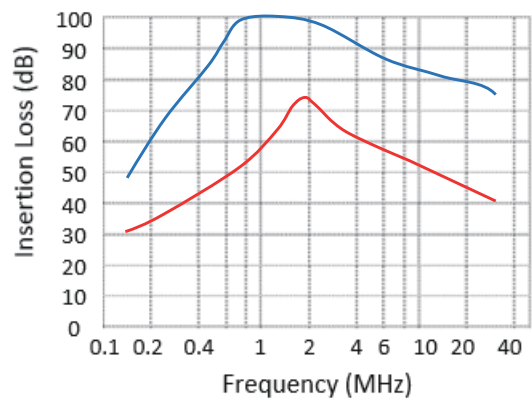
TB1-10A0D0H



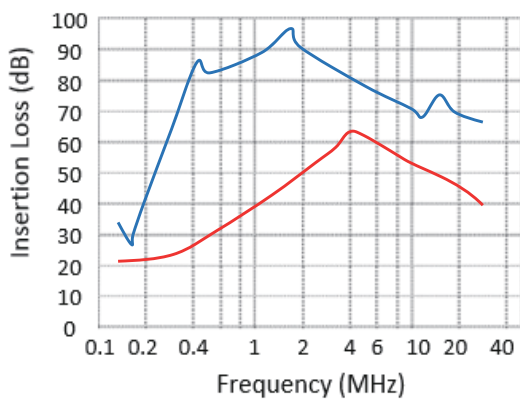
TB1-16A0D0H



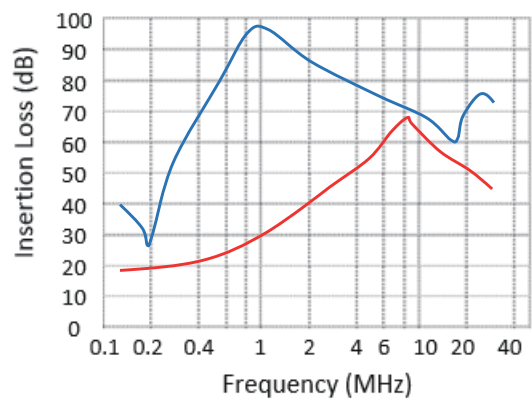
TB1-20A0D0H



TB1-30A0D0H



TB1-40A0D0H



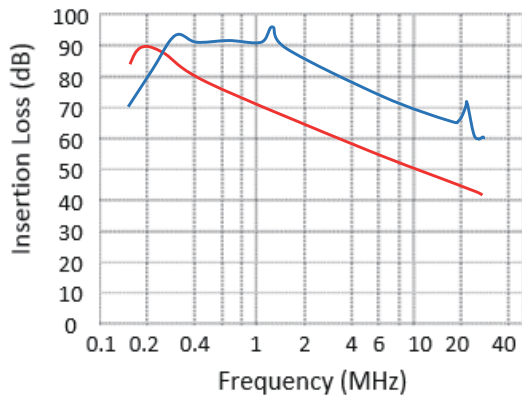
Attenuation Characteristics

Common mode (—)

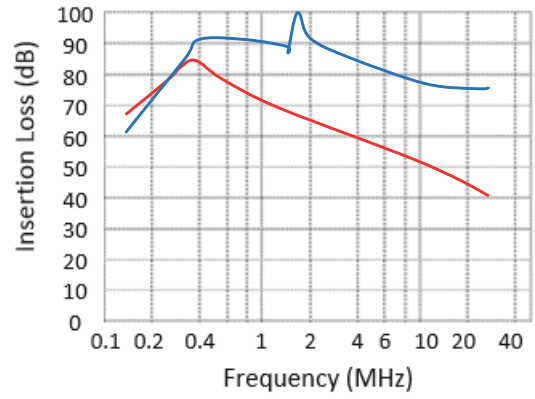
Differential mode (—)

TB1-**A080H Series

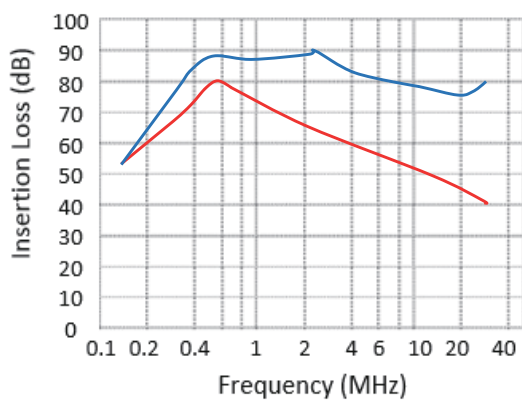
TB1-06A080H



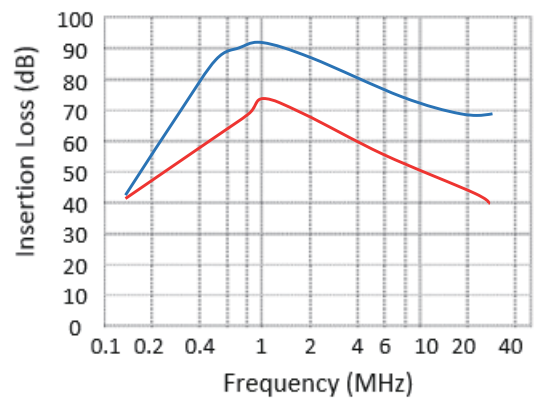
TB1-10A080H



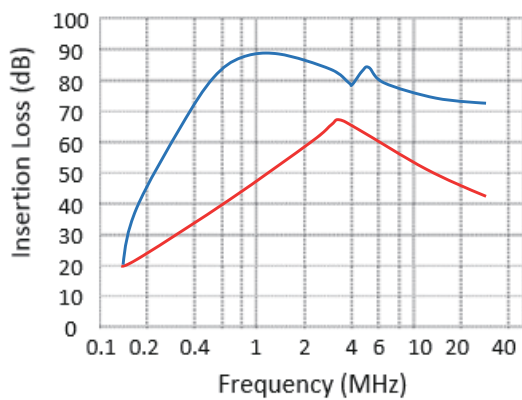
TB1-16A080H



TB1-20A080H



TB1-30A080H



TB1-40A080H

