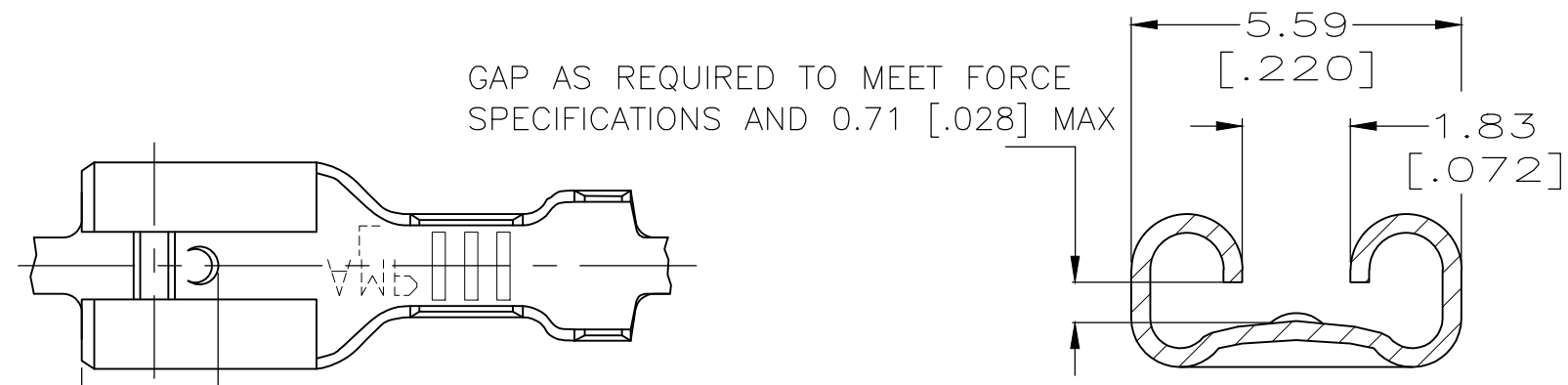


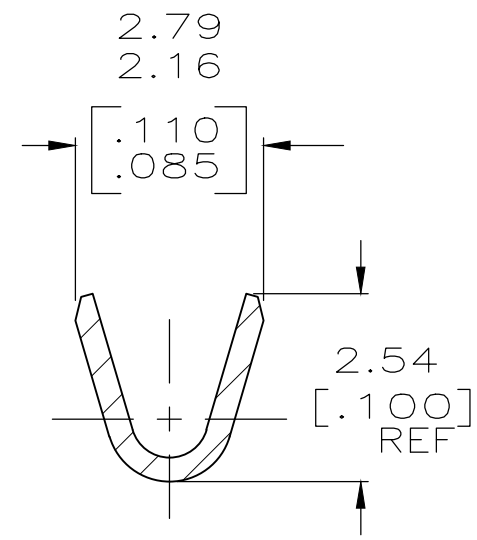
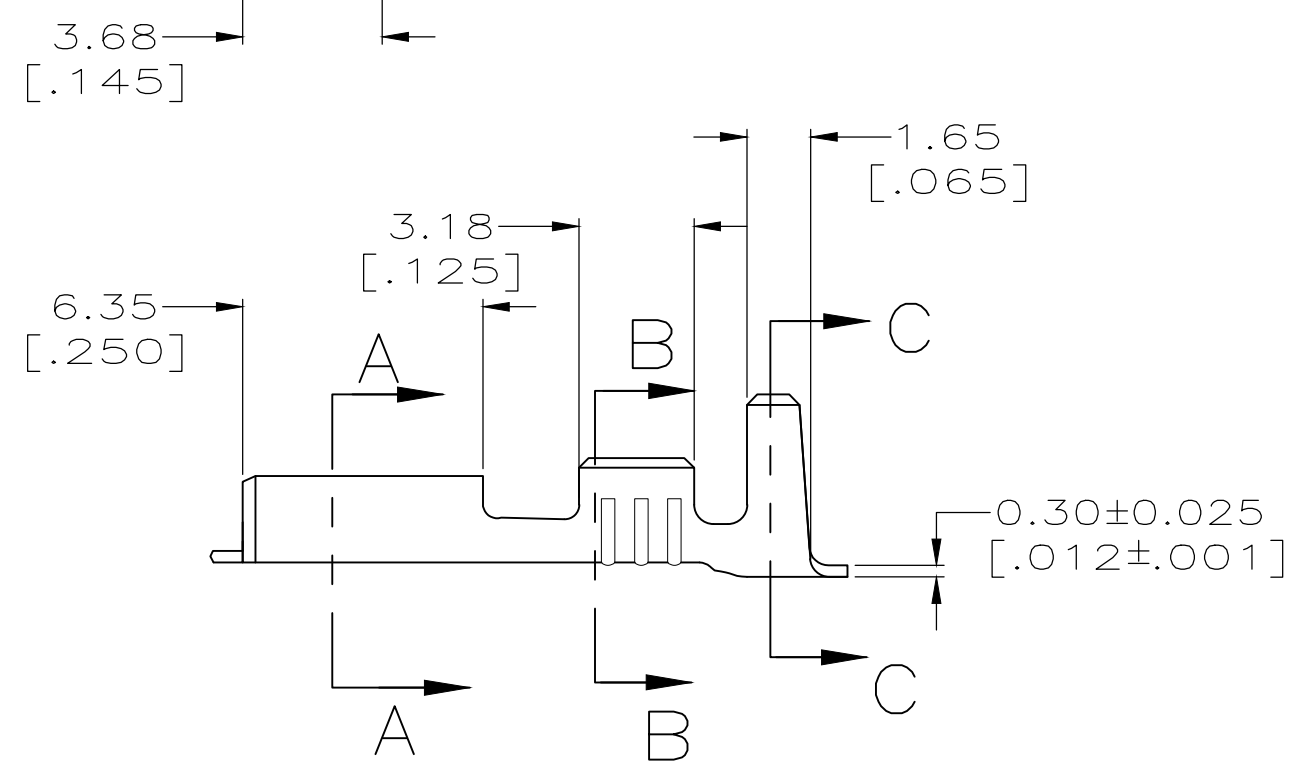
THIS DRAWING IS UNPUBLISHED. RELEASED FOR PUBLICATION
 © COPYRIGHT - By - ALL RIGHTS RESERVED.

LOC	DIST	REVISIONS			
P	LTR	DESCRIPTION	DATE	DWN	APVD
AF	50	C2	REVISED PER ECR-20-009164	20JULY2020	MK DH

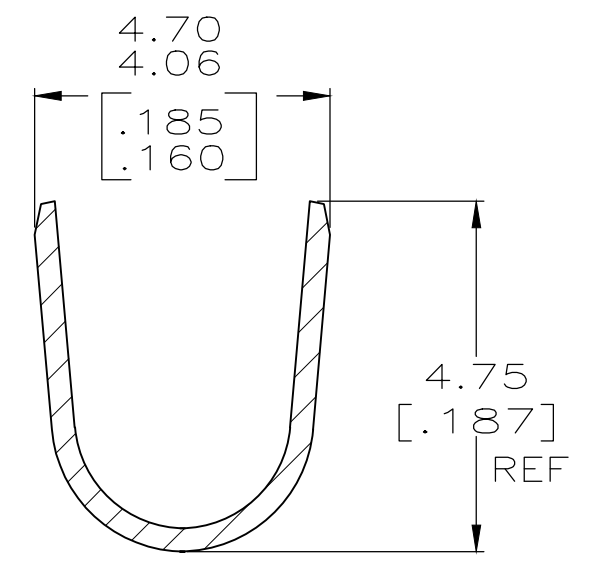
- CONTINUOUS STRIP ON REELS.
- WIRE SIZE [#22-#18] AWG.
- INSULATION RANGE TO BE 2.29-3.81 [.090-.150] DIA.
- MATING TAB THK IS 0.84-0.76 [.033-.030]



SECTION A-A
SCALE 8:1



SECTION B-B
SCALE 10:1



SECTION C-C
SCALE 10:1

PLAIN	63931-2
TIN	63931-1
$\triangle 5$ FINISH	PART NO.

THIS DRAWING IS A CONTROLLED DOCUMENT.		DWN	JR RUTH	9/16/96	STE TE Connectivity											
DIMENSIONS: mm [INCHES]		CHK	MS FEHER	9/16/96												
TOLERANCES UNLESS OTHERWISE SPECIFIED:		APVD	P DESANTIS	9/16/96												
<table border="0"> <tr><td>0 PLC</td><td>± -</td></tr> <tr><td>1 PLC</td><td>± -</td></tr> <tr><td>2 PLC</td><td>± 0.25 [.010]</td></tr> <tr><td>3 PLC</td><td>± -</td></tr> <tr><td>4 PLC</td><td>± -</td></tr> <tr><td>ANGLES</td><td>± -</td></tr> </table>		0 PLC	± -	1 PLC		± -	2 PLC	± 0.25 [.010]	3 PLC	± -	4 PLC	± -	ANGLES	± -	PRODUCT SPEC	
0 PLC	± -															
1 PLC	± -															
2 PLC	± 0.25 [.010]															
3 PLC	± -															
4 PLC	± -															
ANGLES	± -															
MATERIAL		APPLICATION SPEC		114-2036	SIZE	CAGE CODE	DRAWING NO	RESTRICTED TO								
BRASS		FINISH		$\triangle 5$	A3	00779	C-63931	-								
CUSTOMER DRAWING					SCALE	5:1	SHEET	1 OF 1	REV	C2						