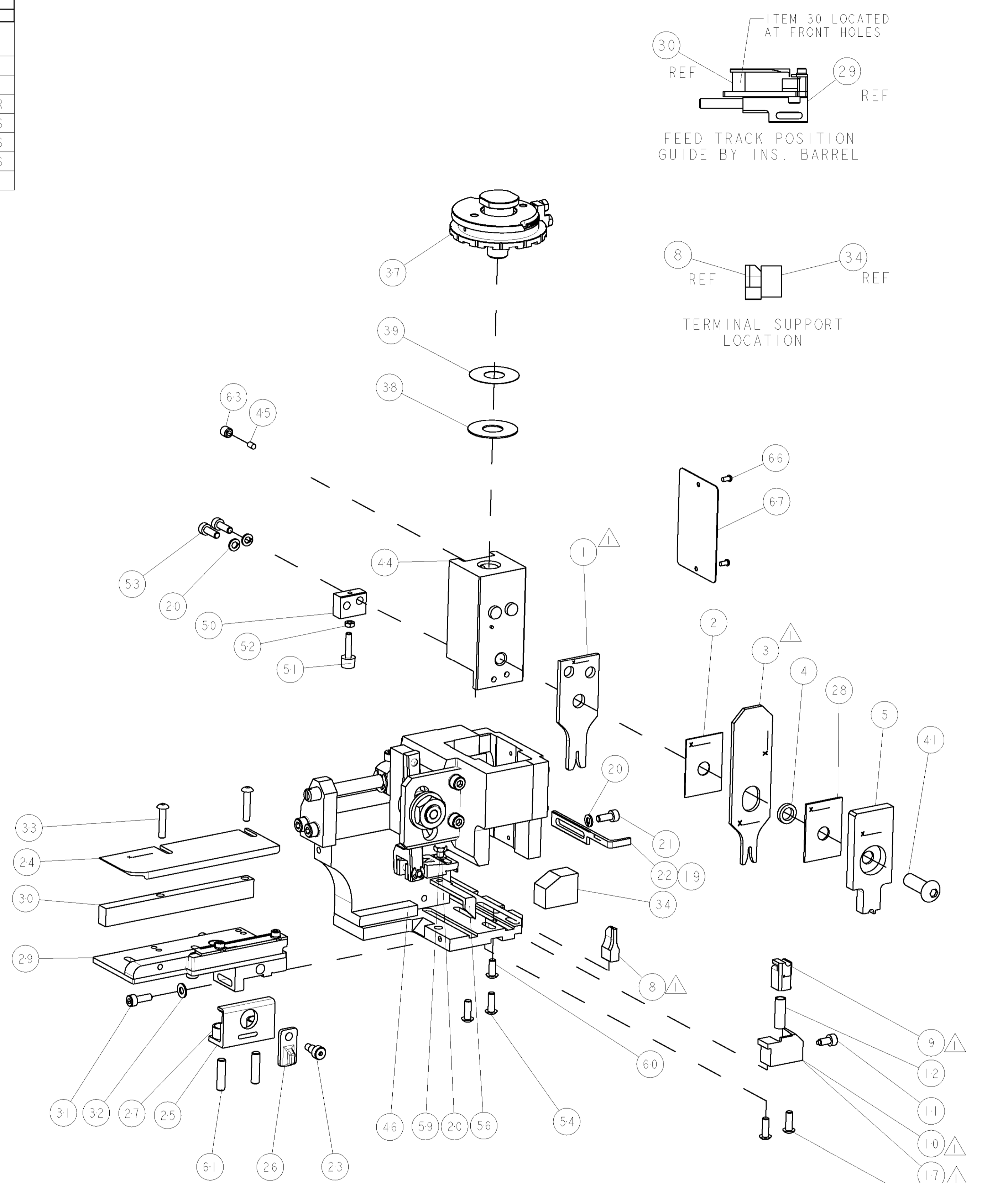
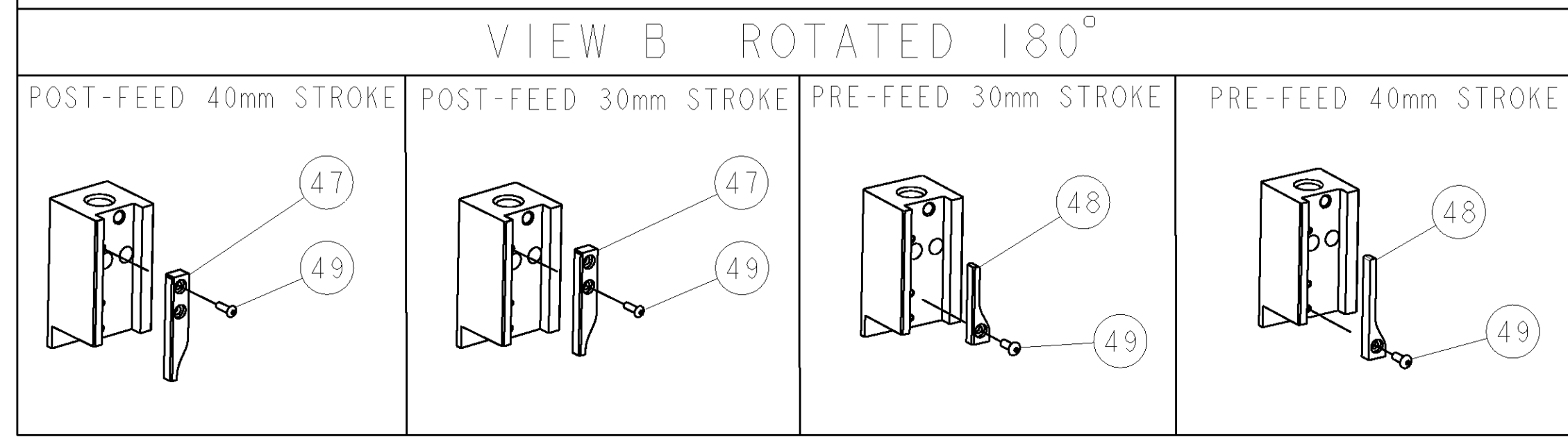


PART NUMBER	REV	TERMINATOR	FEED TYPE	DESCRIPTION
1528538-1	A	LEADMAKER	MECH POST FEED	CUTS CARRIER
1528538-2	A	BENCH	MECH PRE FEED	CUTS CARRIER
1528538-6	A	LEADMAKER	MECH POST FEED	CONTINUOUS CARRIER
7-1528538-1	A	LEADMAKER	MECH POST FEED	-1 AND SPARE PARTS
7-1528538-2	A	BENCH	MECH PRE FEED	-2 AND SPARE PARTS
7-1528538-6	A	LEADMAKER	MECH POST FEED	-6 AND SPARE PARTS
7-1528538-7	A	-	-	SPARE PARTS KIT

CRIMP DATA		MOLEX TERMINAL		MOLEX CRIMP SPEC $\triangle$	
CRIMP	SIZE	TYPE	RANGE		
TERMINAL NAME: HDX FEMALE CRIMP TERMINAL 0.635mm					
WIRE	1.50 [0.059 IN]	F	0.22mm - 0.60mm <sup>2</sup>		
INSUL	2.29 [0.090 IN]	o	1.2-1.8 [0.047-0.071 IN]		
WIRE STRIP LENGTH		APPL INSTRUCTIONS			
3.6-4.4 [0.142-0.173 IN]		408-8322 & 408-8490 $\triangle$			
TERMINAL DRG SD-98587-001		FEED APPL SPEC		8.00 [0.315 IN]	
TERMINALS APPLIED					
TYCO PN	MOLEX PN				
1572722-1	98587-0014				
WIRE SIZE	CRIMP HEIGHT	REF SETTING			
0.60mm sq	1.14 ±0.03 [0.045 ±0.001 IN]	B 0			
0.50mm sq	1.07 ±0.03 [0.042 ±0.001 IN]	B 7			
0.35mm sq	1.05 ±0.03 [0.041 ±0.001 IN]	B 8			
0.22mm sq	1.01 ±0.03 [0.040 ±0.001 IN]	B 9			

$\triangle$  RECOMMENDED SPARE PARTS  
 2. GREASE RAM, CAM, CAM FOLLOWER AND FEED ROD LIGHTLY  
 3. LUBRICATE DAILY PER THE APPLICATOR INSTRUCTION SHEET SUPPLIED WITH THE APPLICATOR  
 4. ALL CRIMP DATA SUPPLIED BY TERMINAL MANUFACTURER.  
 0.22 mm<sup>2</sup> WIRE IS NOT RECOMMENDED FOR USE BY TYCO ELECTRONICS UK LTD.



\* WARNING  
 ON INSTALLATION, SET WIRE DISC TO LARGEST WIRE SIZE SETTING. USE OF SETTINGS BELOW MIN. REQUIRED CRIMP HEIGHT SETTING WILL CAUSE DAMAGE TO CRIMP TOOLING.

PROTOTYPE DESIGN NOT RELEASED FOR PRODUCTION

SET UP GAGE 458637-3

LOC	DIST	REV	DATE	BY	APPD
A	66		10JUN2005	LJL	FB

REV	DATE	DESCRIPTION	ITEM NO						
-	-	-	73						
-	-	-	72						
-	-	-	71						
-	-	-	70						
-	-	-	69						
-	-	-	68						
-	-	-	67						
-	-	-	66						
-	-	-	65						
-	-	-	64						
-	-	-	63						
-	-	-	62						
-	-	-	61						
-	-	-	60						
-	-	-	59						
-	-	-	58						
-	-	-	57						
-	-	-	56						
-	-	-	55						
-	-	-	54						
-	-	-	53						
-	-	-	52						
-	-	-	51						
-	-	-	50						
-	-	-	49						
-	-	-	48						
-	-	-	47						
-	-	-	46						
-	-	-	45						
-	-	-	44						
-	-	-	43						
-	-	-	42						
-	-	-	41						
-	-	-	40						
-	-	-	39						
-	-	-	38						
-	-	-	37						
-	-	-	36						
-	-	-	35						
-	-	-	34						
-	-	-	33						
-	-	-	32						
-	-	-	31						
-	-	-	30						
-	-	-	29						
-	-	-	28						
-	-	-	27						
-	-	-	26						
-	-	-	25						
-	-	-	24						
-	-	-	23						
-	-	-	22						
-	-	-	21						
-	-	-	20						
-	-	-	19						
-	-	-	18						
-	-	-	17						
-	-	-	16						
-	-	-	15						
-	-	-	14						
-	-	-	13						
-	-	-	12						
-	-	-	11						
-	-	-	10						
-	-	-	9						
-	-	-	8						
-	-	-	7						
-	-	-	6						
-	-	-	5						
-	-	-	4						
-	-	-	3						
-	-	-	2						
-	-	-	1						
-77	-76	-72	-71	-6	-2	-1	PART NO	DESCRIPTION	ITEM NO
84									
83									
82									
81									
80									
79									
78									
77									
76									
75									
74									

-77	-76	-72	-71	-6	-2	-1	PART NO	DESCRIPTION	ITEM NO
-	-	-	-	-	-	-			
-	-	-	-	-	-	-			
-	-	-	-	-	-	-			
-	-	-	-	-	-	-			
-	-	-	-	-	-	-			
-	-	-	-	-	-	-			
-	-	-	-	-	-	-			
-	-	-	-	-	-	-			
-	-	-	-	-	-	-			
-	-	-	-	-	-	-			
-	-	-	-	-	-	-			
-	-	-	-	-	-	-			
-	-	-	-	-	-	-			
-	-	-	-	-	-	-			
-	-	-	-	-	-	-			
-	-	-	-	-	-	-			

DIMENSIONS: mm [IN] 	TOLERANCES UNLESS OTHERWISE SPECIFIED: 0 PLC ± 1 PLC ± 3 PLC ± 4 PLC ± ANGLES ±	DWG: 10-Jun-05 ENR: J. LOFTHOUSE APVD: 16-May-05 NAME: F. BACKHURST PRODUCT SPEC: APPLICATION SPEC: See Table MATERIAL: FINISH:	<b>tyco Electronics</b> Tyco Electronics Harrisburg, PA 17105-3608 <b>FINE ADJUST SIDE FEED HDI APPLICATOR</b> SIZE: A   CAGE CODE: 00779   DRAWING NO: C-1528538 SCALE: 3:5 SHEET 1 OF 1 REV A
-------------------------	--	--	--