

11 X

TERMINAL FINISH OPTIONS:

11 R

X R

ROHS COMPLIANT

BLANK - (STD) ELECTRO-TIN PLATED

M - GOLD PLATED SPRINGS WITH GOLD CONTACTS ON RING SPRINGS AND SHUNT SPRINGS (WHEN SHUNTS ARE USED)

TERMINAL OPTIONS:

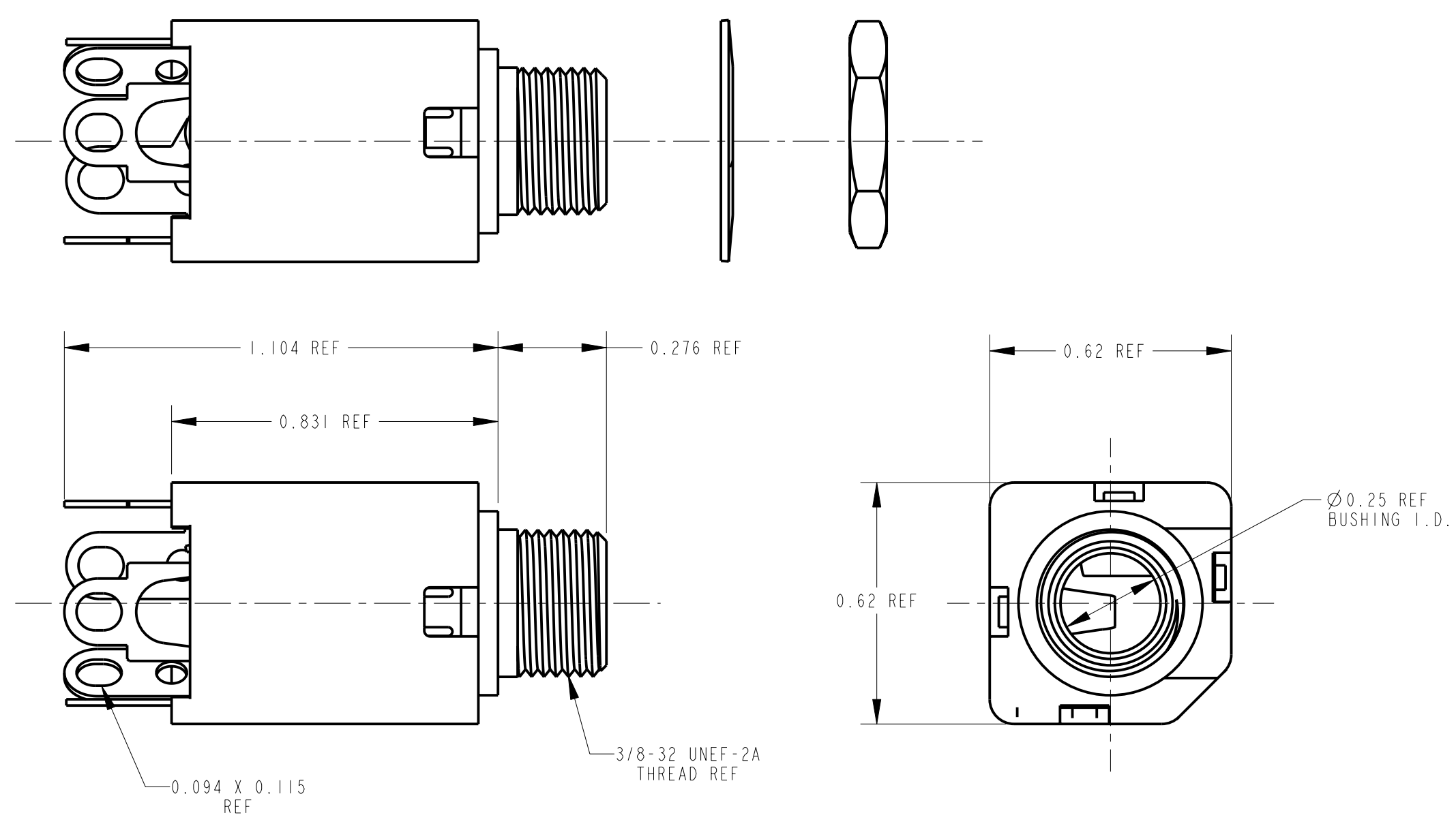
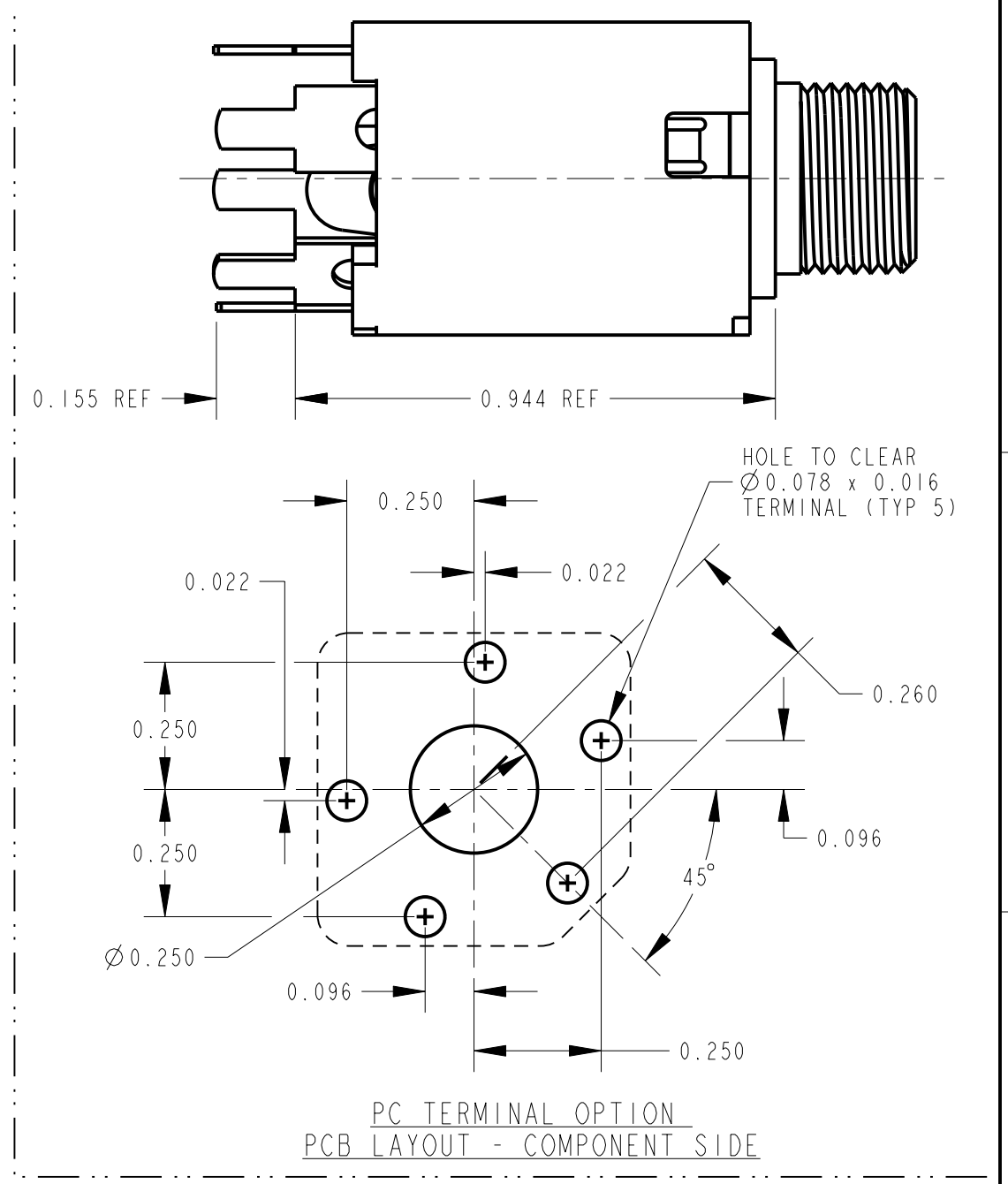
BLANK - SOLDER TERMINAL

PC - 0.078 WIDE PC TAILS

PCS - SNAP-IN PC TAILS

CIRCUITRY OPTIONS:

1 - TIP OPEN CIRCUIT	TIP SLEEVE
2A - TIP CLOSED CIRCUIT	TIP SLEEVE
2B - TIP & RING OPEN CIRCUIT	RING TIP SLEEVE
3 - TIP OPEN CIRCUIT AND ISOLATE "MAKE" CIRCUIT	TIP SLEEVE
3B - TIP CLOSED CIRCUIT AND RING OPEN CIRCUIT (I-C TRANSFER)	RING TIP SLEEVE
3D - 1 TIP CLOSED CIRCUIT AND 1 TIP OPEN CIRCUIT	TIP SLEEVE
3E - TIP OPEN CIRCUIT AND ISOLATED "BREAK" CIRCUIT	TIP SLEEVE
3F - TIP OPEN CIRCUIT AND RING CLOSED CIRCUIT	RING TIP SLEEVE
4B - TIP & RING CLOSED CIRCUIT	RING TIP SLEEVE



- NOTES:
- HARDWARE SHIPPED UNASSEMBLED.
  - MAXIMUM PANEL THICKNESS: 0.156
  - MATERIALS:  
HOUSING - POLYESTER GLASS FILLED, BLACK  
BUSHING - BRASS, NICKEL PLATED  
SLEEVE TERMINAL - BRASS, LEAD FREE ELECTRO-TIN PLATED  
SPRINGS - NICKEL SILVER, LEAD FREE ELECTRO-TIN PLATED  
LIFTERS - NYLON (113 & 113E CIRCUIT OPTIONS)  
WASHER - STEEL, NICKEL PLATED  
NUT - BRASS, NICKEL PLATED
  - THIS PRODUCT IS ROHS COMPLIANT.

★ STAR SYMBOL DENOTES CRITICAL DIMENSION					THIS DRAWING DESCRIBES A DESIGN CONSIDERED PROPRIETARY IN NATURE, DEVELOPED AND MANUFACTURED BY SWITCHCRAFT INC. AND IS RELEASED ON A CONFIDENTIAL BASIS FOR IDENTIFICATION PURPOSES ONLY.				
UNLESS OTHERWISE SPECIFIED					SIZE				
1. ALL DIMENSIONS IN INCHES					WIDTH				
- TWO PLACE DECIMALS ±0.01					MULT				
- THREE PLACE DECIMALS ±0.005					LBS/M				
- ANGLES ±1°					TEMPER				
- ALL DIA. CONCENTRIC WITHIN 0.005 T.I.R.					FINISH				
2. FEATURES ON THE SAME CENTERLINE MUST BE ALIGNED WITHIN ±0.002					SPEC No.				
3. REMOVE ALL BURRS					MATERIAL				
DO NOT SCALE DRAWING					SPEC No.				
REVISIONS					FIRST USED ON				
DATE					SCALE				
BY					3:1				
APVD					DATE DRAWN				
REV					BY				
ECO NUMBER					CHKD				
DATE					APVD				
BY					TJK				
APVD					MW				
REV					4-18-06				
ECO NUMBER					4-18-06				
DATE					4-18-06				
BY					4-18-06				
APVD					4-18-06				
REV					NAME				
ECO NUMBER					#3/8-32 THREADED BUSHING				
DATE					∅0.25 I.D., HI-D JACK ASSY, ROHS				
BY					PART No.				
APVD					110X SERIES				
REV					M110X SERIES				
ECO NUMBER					REV				
DATE					A				
BY									
APVD									