



ENCLOSED YAGI ANTENNA

YE24007

FULLY ENCLOSED YAGI IS ULTIMATE POINT-TO-POINT WIFI ANTENNA

Laird Technologies fully enclosed Yagi series antennas are the indoor and outdoor solution for point-to-point WiFi transmissions. Designed and constructed with superior materials and components, the antennas will provide years of uninterrupted performance.

FEATURES AND BENEFITS

- High gain antenna compatible with 300 watts maximum power
- 150 mph rated wind velocity allows for outdoor installations
- All antennas include mounting bracket for easy mast mounting

APPLICATIONS

- Outdoor or indoor WiFi applications for corporate
- or campus-wide wireless communications networks.

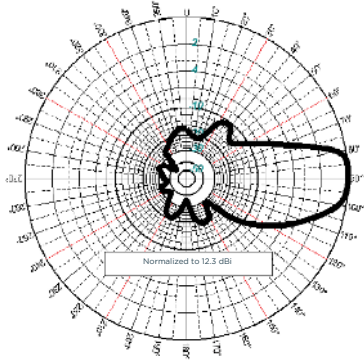
ELECTRICAL SPECIFICATION

| | |
|--|------------------------|
| Frequency Range | 2400 - 2500 MHz |
| Frequency Bandwidth | 100 MHz @ VSWR <1.5:1 |
| VSWR | < 2.0:1 |
| Nominal Gain | 12.3 dBi |
| Front to Back Ratio | 25 dB |
| Maximum Power | 300 W |
| Nominal Impedance | 50 Ω |
| Polarization | Vertical or Horizontal |
| Horizontal Beamwidth (For Vertical Polarization) | 33 |
| Vertical Beamwidth (For Vertical Polarization) | 37 |

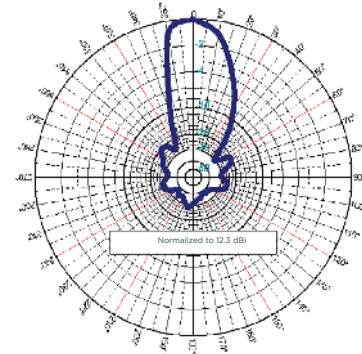
MECHANICAL SPECIFICATION

| | |
|---|---|
| Material | Aluminum |
| Length | 8 |
| Boom Diameter | 3 |
| Weight | 0.68 lb |
| Rated Wind Velocity | 150 mph (241 kph) |
| Rated Wind Velocity (with 0.5 radial ice) | 80 mph (130 kph) |
| Equivalent Flat Area | 0.1667 sq. ft. |
| Cable | 18 low loss dual shield coaxial cable |
| Termination | N Female connector |
| Color | White |
| Mounting | Two (2) inches U-bolts and brackets for easy mast mounting. |

ANTENNA PATTERNS



Vertical-to-Vertical Polarization Azimuthal Pattern (X, Y or E-Plane)



Horizontal-to-Horizontal Polarization Elevation Pattern (Y, Z or H-Plane)

TE TECHNICAL SUPPORT CENTER

| | |
|-------------------|-----------------------|
| USA: | +1 (800) 522-6752 |
| Canada: | +1 (905) 475-6222 |
| Mexico: | +52 (0) 55-1106-0800 |
| Latin/S. America: | +54 (0) 11-4733-2200 |
| Germany: | +49 (0) 6251-133-1999 |
| UK: | +44 (0) 800-267666 |
| France: | +33 (0) 1-3420-8686 |
| Netherlands: | +31 (0) 73-6246-999 |
| China: | +86 (0) 400-820-6015 |

te.com

TE Connectivity, TE Connectivity (logo) and Every Connection Counts are trademarks. All other logos, products and/or company names referred to herein might be trademarks of their respective owners.

The information given herein, including drawings, illustrations and schematics which are intended for illustration purposes only, is believed to be reliable. However, TE Connectivity makes no warranties as to its accuracy or completeness and disclaims any liability in connection with its use. TE Connectivity's obligations shall only be as set forth in TE Connectivity's Standard Terms and Conditions of Sale for this product and in no case will TE Connectivity be liable for any incidental, indirect or consequential damages arising out of the sale, resale, use or misuse of the product. Users of TE Connectivity products should make their own evaluation to determine the suitability of each such product for the specific application.

©2021 TE Connectivity. All Rights Reserved.

12/21 Original