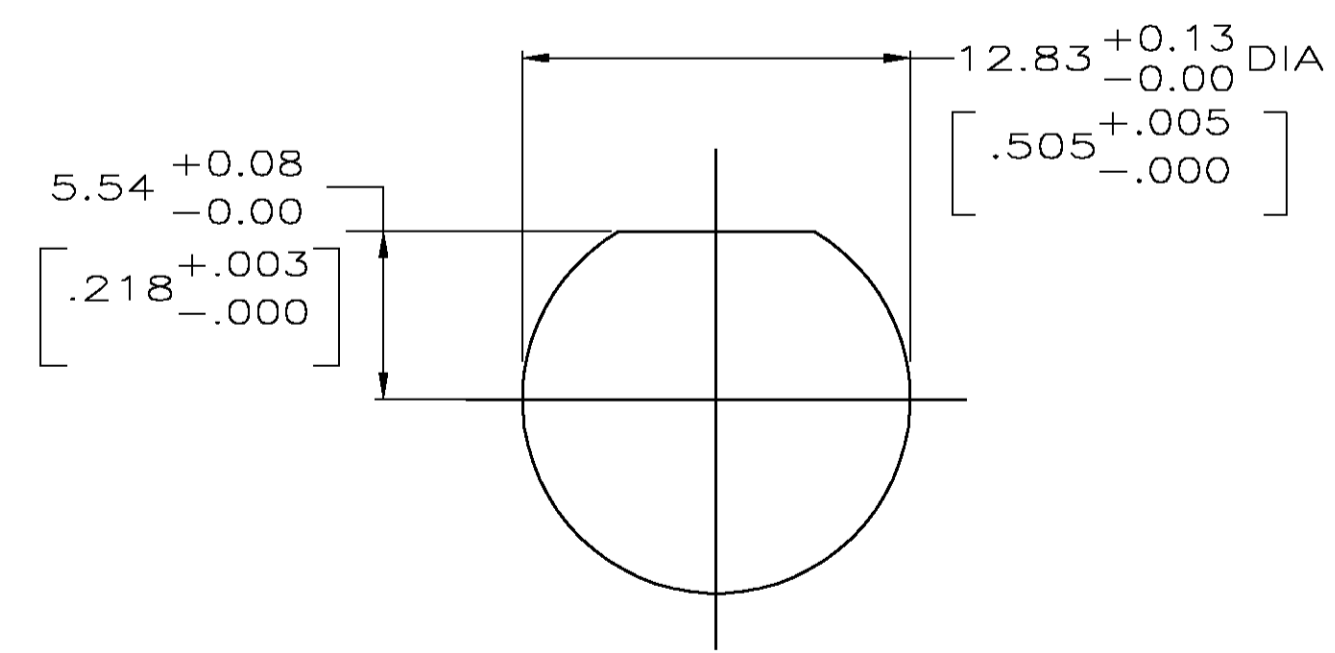
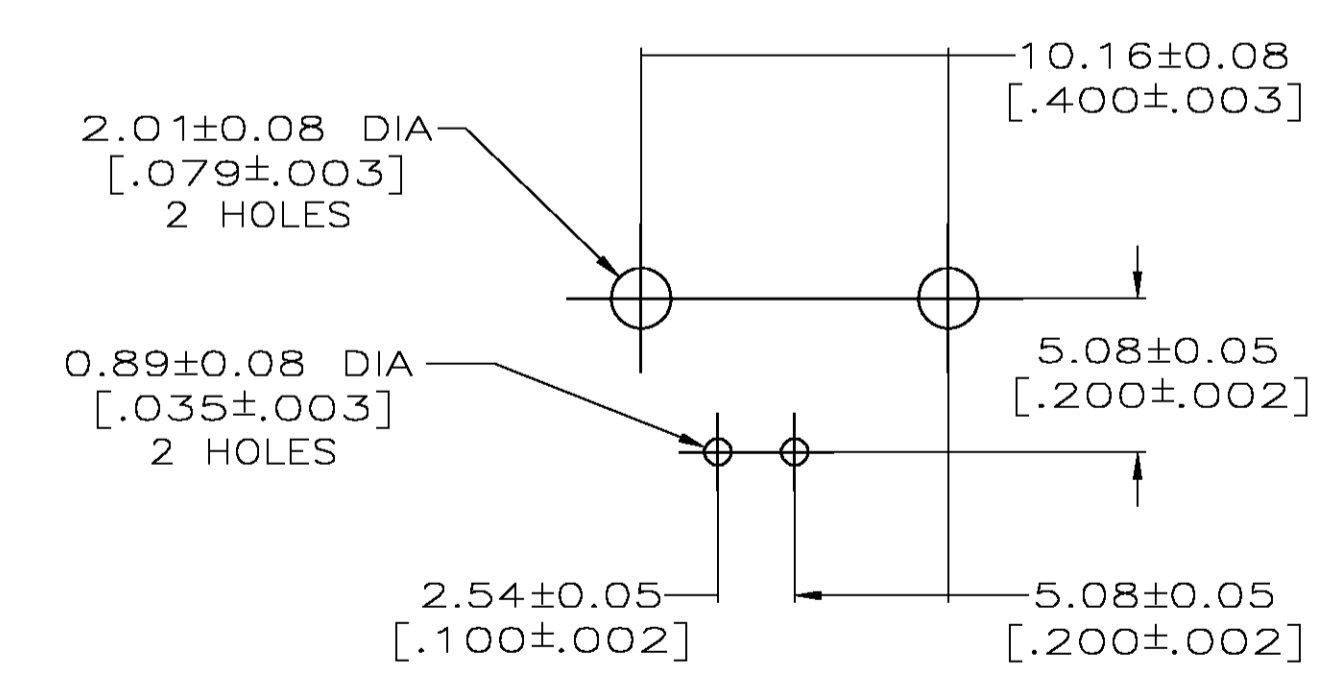


- 1 ZINC PER QQ-Z-363.
- 2 POLYMETHYLPENTENE PER ASTM-D-1238.
- 3 PHOSPHOR BRONZE PER QQ-B-750.
- 4 BRASS PER ASTM-B-453.
- 5 BRASS PER ASTM-B-16.
- 6 NICKEL PLATE PER QQ-N-290, 3.81 μm [.000150] MINIMUM THICK.
- 7 TIN PLATE PER ASTM-B-545, 3.81 μm [.000150] MINIMUM THICK.
- 8 GOLD PLATE PER MIL-G-45204, 1.27 μm [.000050] MINIMUM THICK.
- 9 GOLD PLATE PER MIL-G-45204, 0.76 μm [.000030] MINIMUM THICK.
- 10. SEE INSTRUCTION SHEET 2769.



RECOMMENDED PANEL CUTOUT



PCB CONFIGURATION

| | |
|----------------|-------------|
| | 413879-2 |
| | 413879-1 |
| CONTACT FINISH | PART NUMBER |

| | | | |
|---|--|------------------------|--|
| THIS DRAWING IS A CONTROLLED DOCUMENT. | | DIN J. LIPPERT 6-23-92 | Tyco Electronics Corporation Middletown, PA 17057 |
| DIMENSIONS: INCHES | | CIK A. GABANY 6-25-92 | |
| TOLERANCES UNLESS OTHERWISE SPECIFIED: 0 PLC ± - 1 PLC ± - 2 PLC ± 0.20 [.008] 3 PLC ± - 4 PLC ± - ANGLES ± - | | APVD A. GABANY 6-25-92 | NAME |
| MATERIAL SEE NOTES 1-5 | | FINISH SEE NOTES 6-9 | JACK, RIGHT ANGLE, PCB 50 OHM, SERIES BNC |
| CUSTOMER DRAWING | | WEIGHT - | RESTRICTED TO |
| SCALE 4:1 | | SHEET 1 OF 1 | REV B |