



Electrical Specifications

Center Frequency: 5800 MHz
Pole: 3
Bandwidth: 300 MHz
Passband: 5650-5950 MHz
Insertion Loss: 2.0 dB Max
Ripple in Bandwidth: 0.5 dB Max
VSWR (Fo): 1.5:1 Min
Attenuation: >20 dB @ 5000 MHz
 >40 dB @ 3700 MHz
 >20 dB @ 6300 MHz
 >20 dB @ 8000 MHz
Impedance: 50Ω
Input Power: 2 W CW Max

Mechanical

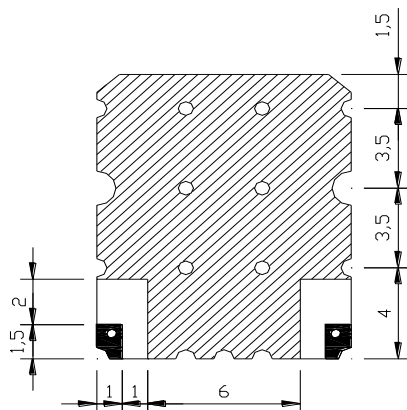
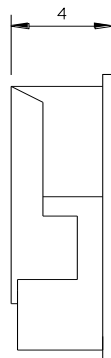
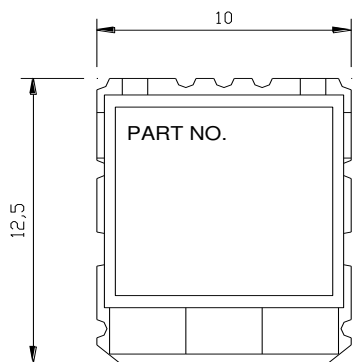
Mounting Method: SMT
Dimensions: 12.5 x 10.0 x 4.0 mm

Environmental

Operating Temperature: -40 to +85° C

This product is RoHS compliant.

Outline Drawing:



Unit:mm
 Tolerance:+/-0.3
 Ground
 I/O PORT