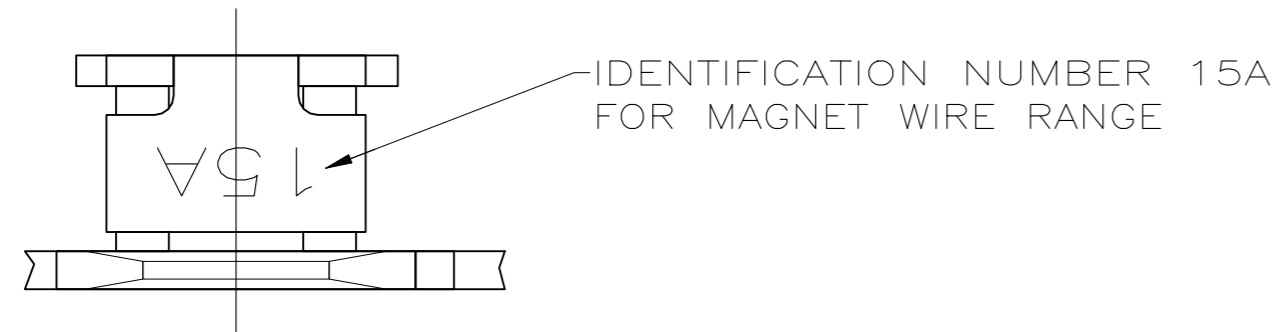
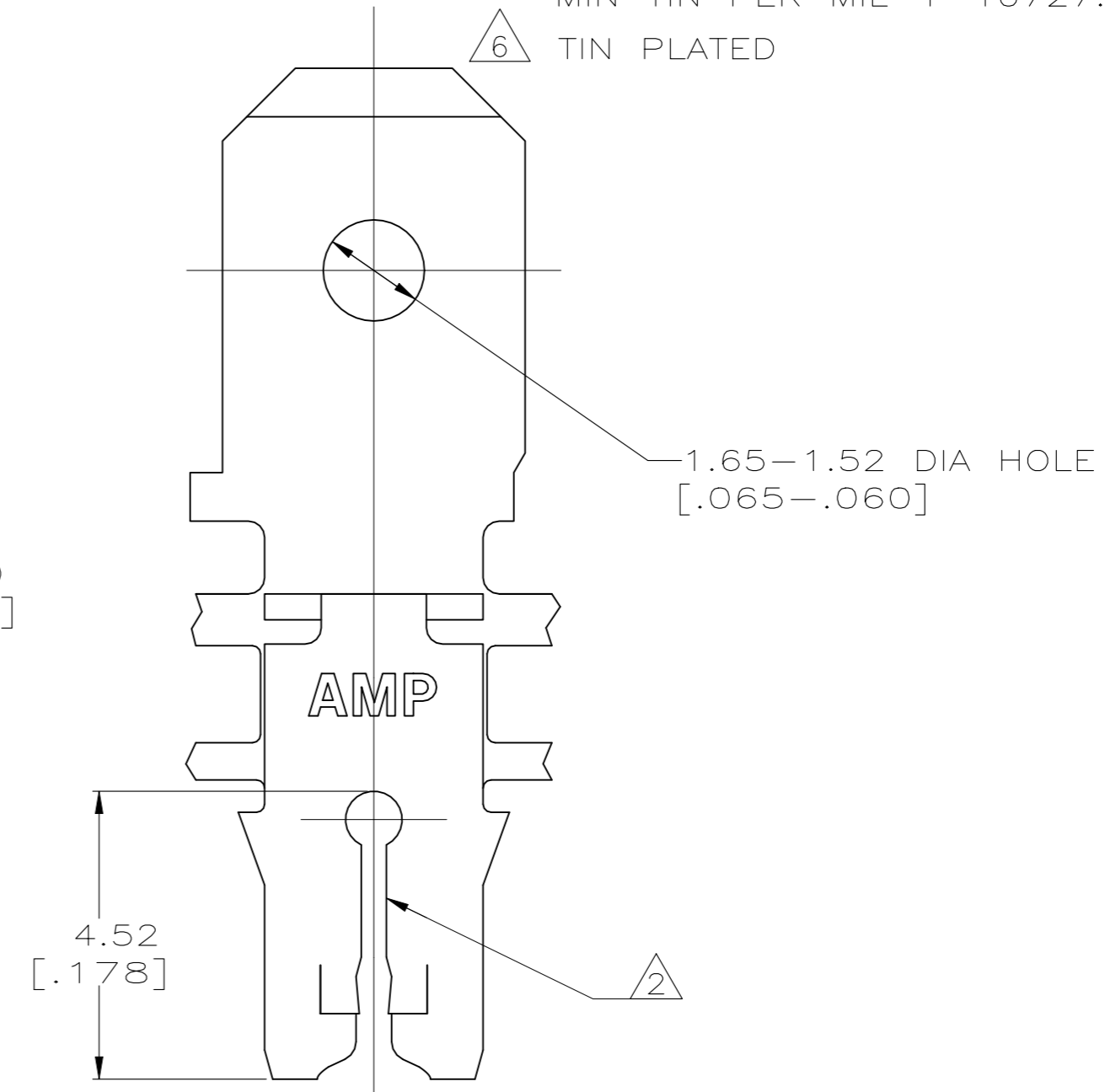
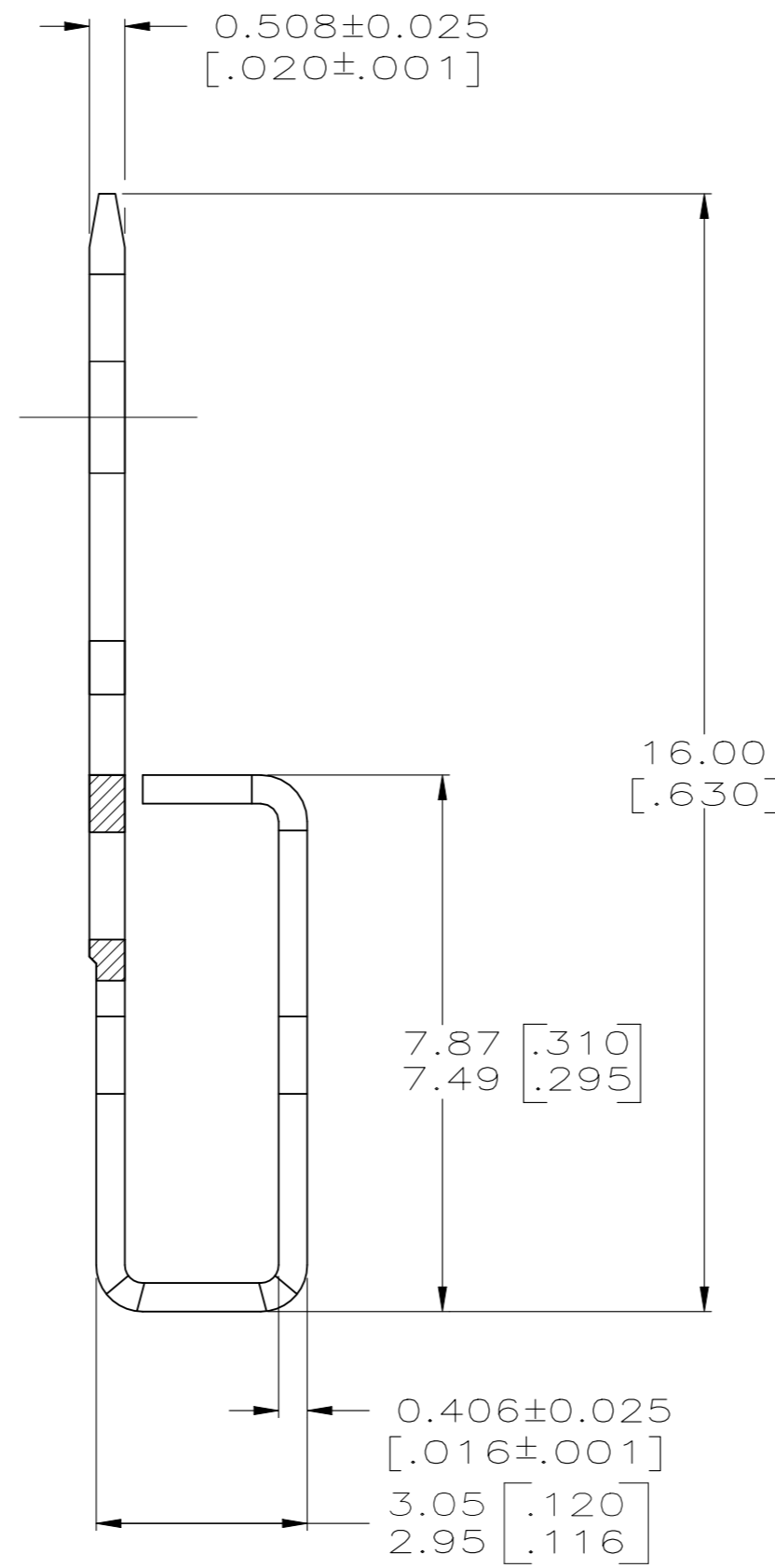
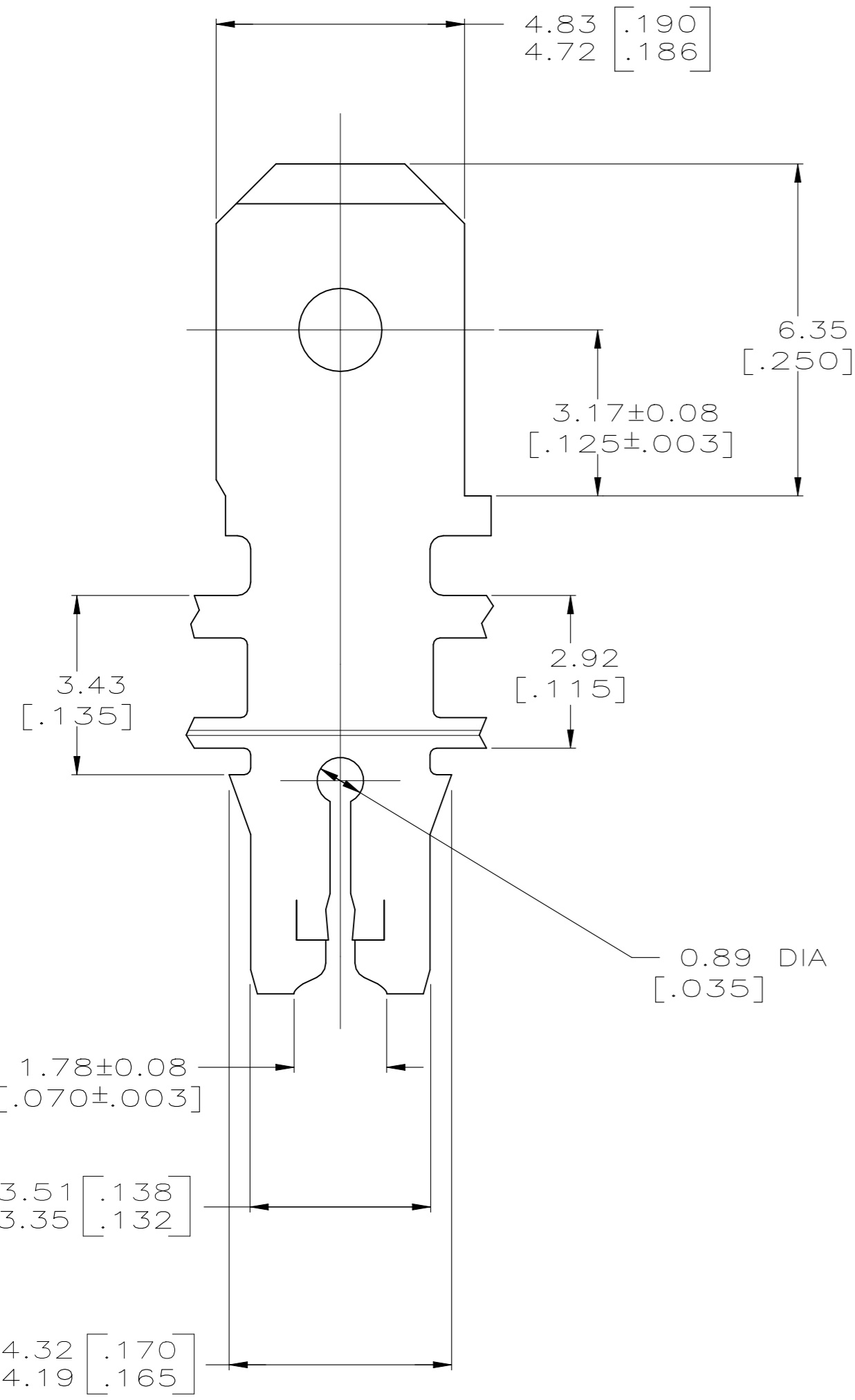


REVISIONS					
P	LTR	DESCRIPTION	DATE	DWN	APVD
	D3	REVISED PER ECR-22-126726	17JAN2022	JJ	TD



- 1 CONTINUOUS STRIP ON REELS WITH TERMINALS LOCATED ON 5.59±0.08 [.220±.003] CENTERS. SLOT TERMINATES A SINGLE MAGNET WIRE ONLY.
- 2 ALUMINUM RANGE: 0.72-0.96mm [#21-#18.5] AWG.
- 3 AFTER INSERTION INTO PLASTIC HOLDER TAB PORTION MUST BE BENT OVER 45° TO 90° OR POTTED-IN TO PREVENT PULL-OUT WHEN MATING RECEPTACLE IS DISCONNECTED.
- 4 ANVIL HEIGHT TO BE 2.29±0.13 [.090±.005].
- 5 VARNISH RESIST OVER 0.001016 [.000040] MIN TIN PER MIL-T-10727.
- 6 TIN PLATED



6	63669-2
5	63669-1
REMARKS	PART NO.

THIS DRAWING IS A CONTROLLED DOCUMENT.		DWN MICHAEL S. FEHER 9/3/92	<b>TE</b> TE Connectivity		
		CHK JEFF R. RUTH 9/4/92			
		APVD NELSON E. NEFF 9/15/92	NAME		
DIMENSIONS: INCHES		PRODUCT SPEC 108-2012		TERMINAL, TAB, 4.75 [.187] FASTON,™ MAG-MATE™	
TOLERANCES UNLESS OTHERWISE SPECIFIED:		APPLICATION SPEC 114-2046 4		SIZE A2	CAGE CODE 00779
0 PLC ± - 1 PLC ± - 2 PLC ± 0.25 [.010] 3 PLC ± - 4 PLC ± - ANGLES ± -		WEIGHT 0.000000		DRAWING NO C=63669	RESTRICTED TO -
MATERIAL BRASS		FINISH 5		SCALE 10:1	SHEET 1 OF 1
CUSTOMER DRAWING				REV D3	