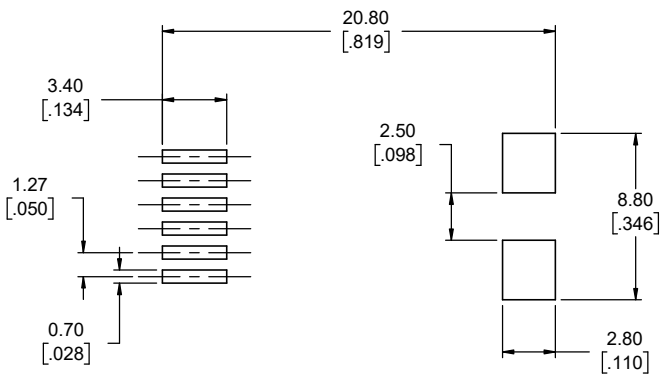
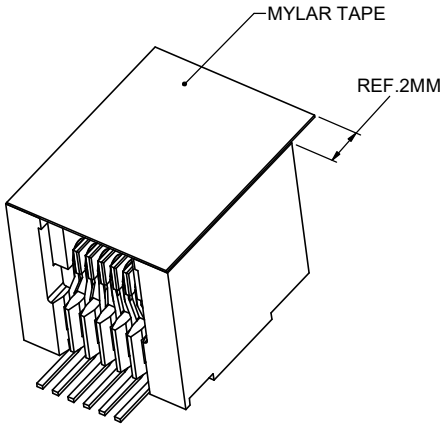
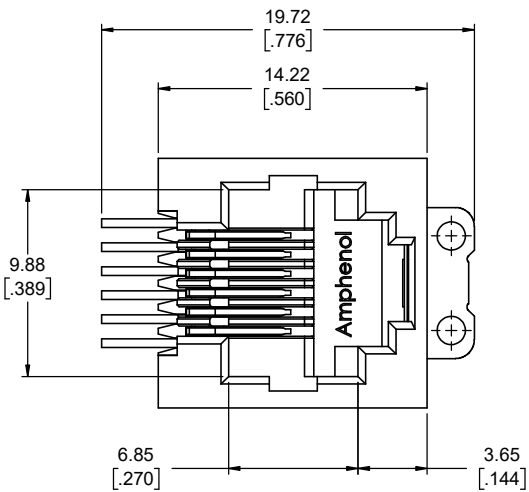
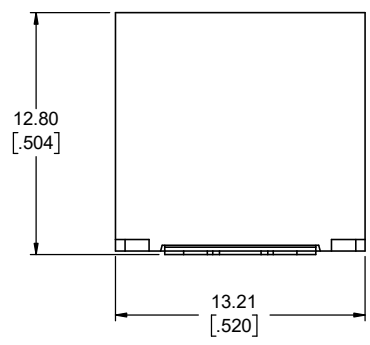
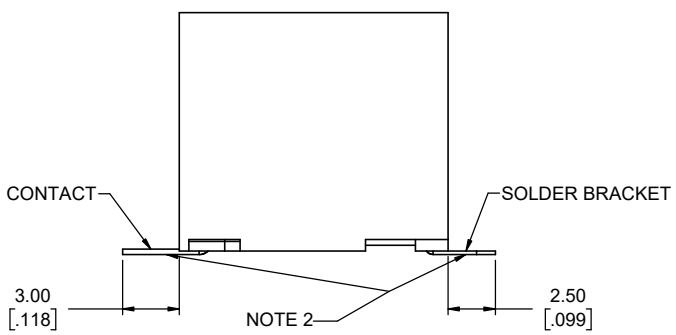


REVISIONS			
REV	DESCRIPTION, ECN, EAR NO.	DATE	APP'D
C	UPDATE THE TAPE AND PACKAGING	MAY25/22	KELVIN.T
D	ADD DIMS TO THE PACKAGING TAPE	JUN09/22	KELVIN.T



**RECOMMENDED P.C.B LAYOUT**  
(COMPONENT SIDE OF BOARD)  
TOLERANCE: ±0.05[002]

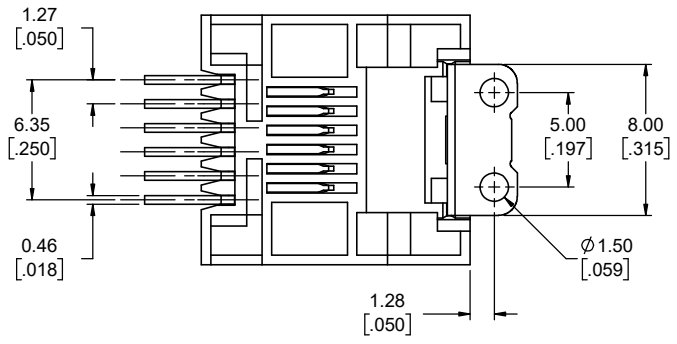


**NOTE:**

- MATERIALS:**  
HOUSING: HIGH TEMPERATURE THERMOPLASTIC, FLAMMABILITY RATING UL94 V-0, COLOUR: BLACK  
CONTACTS: PHOSPHOR BRONZE  
PLATING: SELECTIVE GOLD PLATING ON MATING SURFACES; 100u" [2.54 MICRONS] MIN. MATTE TIN ON SOLDER TAILS; 50u" [1.27 MICRONS] MIN. NICKEL UNDERPLATING OVERALL.  
SOLDER BRACKET: STAINLESS STEEL  
PLATING: MATTE TIN OVER ALL
- COPLANARITY SPECIFICATION:**  
THE MAX GAP BETWEEN ALL TERMINAL TAILS & SOLDER BRACKET IS 0.10[004] MAX.

AMPHENOL PART NUMBER: RJE23-166-0X13-T

- GOLD PLATING OPTION**
- 1= 6u"[0.15 MICRONS] GOLD PLATING
  - 2= 15u"[0.38 MICRONS] GOLD PLATING
  - 3= 30u"[0.76 MICRONS] GOLD PLATING
  - 4= 50u"[1.27 MICRONS] GOLD PLATING



UNLESS SPECIFIED OTHERWISE	DRAWN	JUSTIN.F	JUN13/14
PRIMARY UNITS MILLIMETERS	CHECKED	L.CHAN	JUN13/14
SECONDARY INCHES	M.E. APP'D		
REFERENCE IN PARENTHESES	Q.A. APP'D		
GENERAL TOLERANCES	DWG APPR.		
1 DECIMAL PLACE ±0.38	ENG. REL. NO.		
2 DECIMAL PLACES ±0.25	REF.		
3 DECIMAL PLACES ±0.13	THIRD ANGLE PROJECTION		
ANGULAR DEGREES ±1.0°	DO NOT SCALE DRAWING		

**Amphenol Canada Corp.**  
Commercial Products

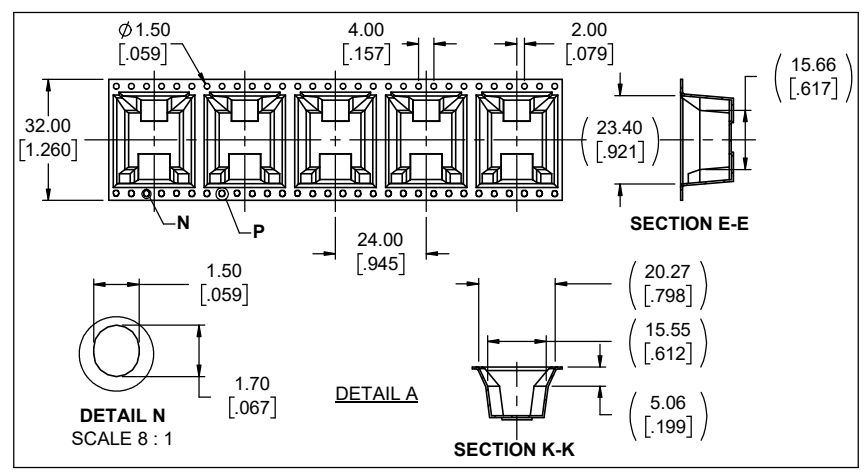
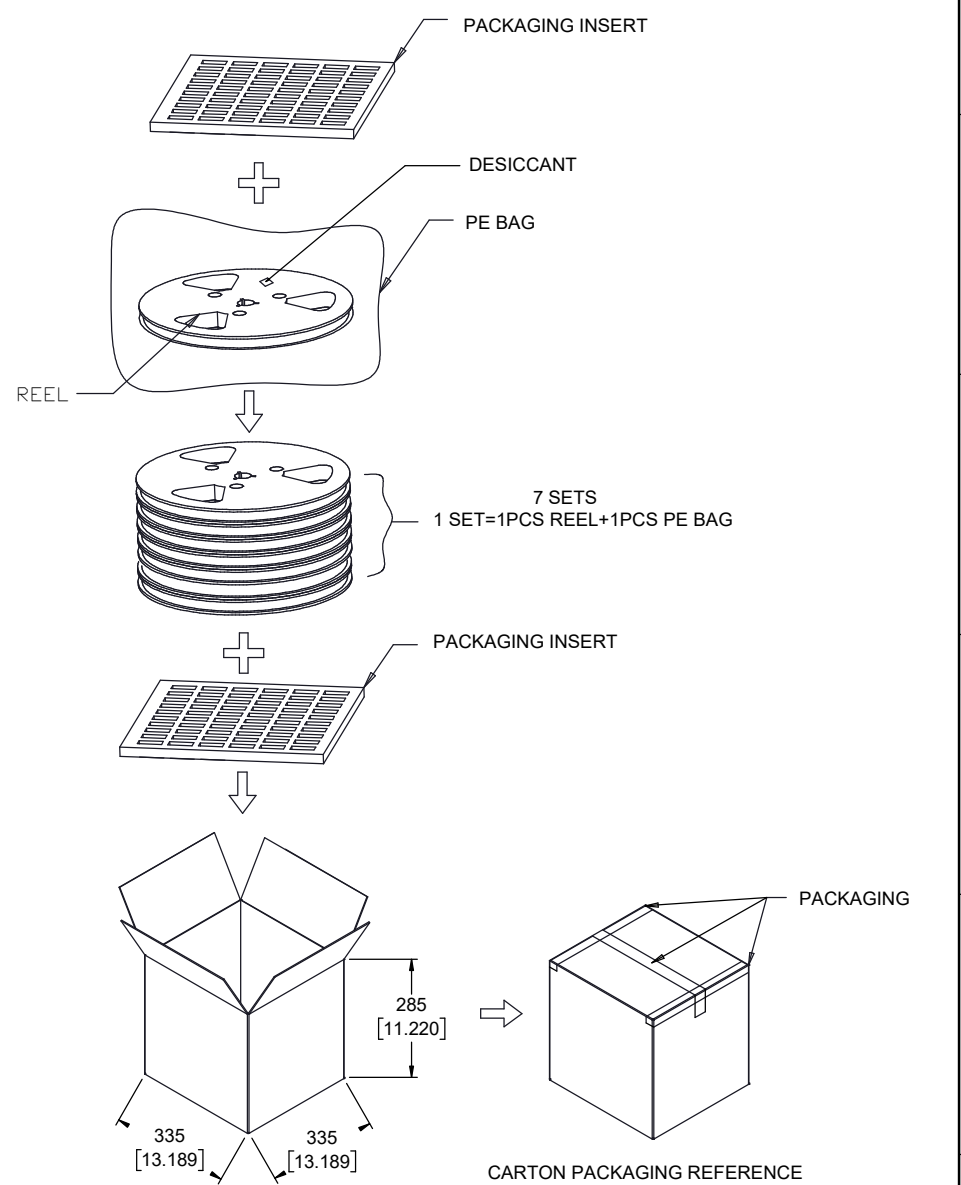
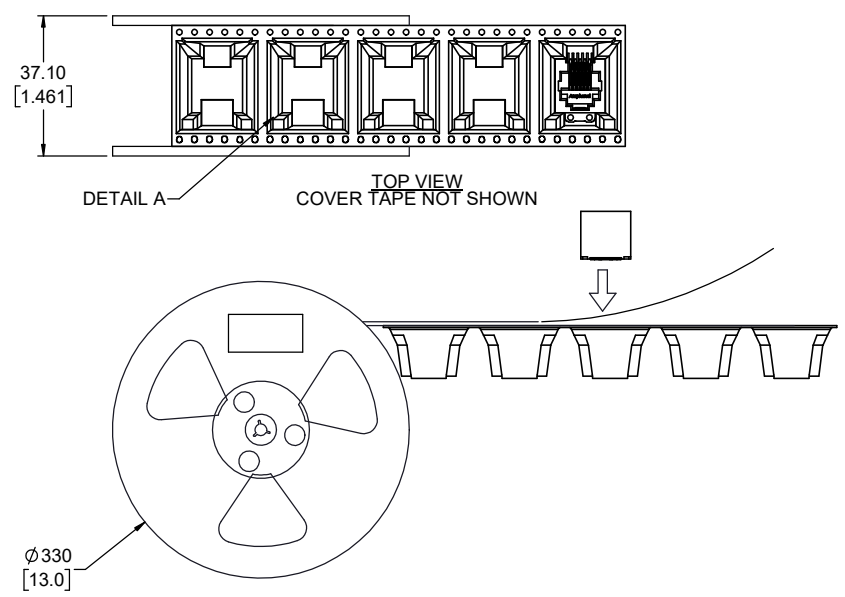
**TOP ENTRY MODULAR JACK,  
SURFACE MOUNT 6 POSITIONS, 6  
CONTACTS, WITH MYLAR TAPE,**

DWG. NO. **P-RJE23-166-0X13-T** REV **D**

CODE ID NO. 03554 DWG SIZE: X SCALE: 5:1 SHEET 1 OF 2

REVISIONS			
REV	DESCRIPTION, ECN, EAR NO.	DATE	APP'D
C	UPDATE THE TAPE AND PACKAGING	MAY25/22	KELVIN.T
D	ADD DIMS TO THE PACKAGING TAPE	JUN09/22	KELVIN.T

DIRECTION OF CONNECTORS PICK OUT FROM CARRIER →



**PACKAGING NOTES:**

- ONE REEL SHOULD HOLD 200 CONNECTORS.
- A FULLY LOADED CARTON SHOULD CONTAIN 7 SETS [1400] OF CONNECTORS.
- THE PACKAGE IS MSL 1 COMPLIANT.



THIS DOCUMENT CONTAINS PROPRIETARY INFORMATION AND SUCH INFORMATION MAY NOT BE DISCLOSED TO OTHERS FOR ANY PURPOSE OR USED FOR MANUFACTURING PURPOSES WITHOUT WRITTEN PERMISSION FROM AMPHENOL CANADA CORP.

UNLESS SPECIFIED OTHERWISE	DRAWN	JUSTIN.F	JUN13/14
PRIMARY UNITS MILLIMETERS	CHECKED	L.CHAN	JUN13/14
SECONDARY INCHES	M.E. APP'D		
REFERENCE IN PARENTHESES	Q.A. APP'D		
GENERAL TOLERANCES	DWG APPR.		
1 DECIMAL PLACE	±0.38	ENG. REL. NO.	
2 DECIMAL PLACES	±0.25	REF.	
3 DECIMAL PLACES	±0.13	THIRD ANGLE PROJECTION	
ANGULAR DEGREES	±1.0°	DO NOT SCALE DRAWING	

**Amphenol Canada Corp.**  
Commercial Products

TOP ENTRY MODULAR JACK,  
SURFACE MOUNT 6 POSITIONS, 6  
CONTACTS, WITH MYLAR TAPE,

DWG. NO. **P-RJE23-166-0X13-T** REV **D**

CODE ID NO. 03554 DWG SIZE: X SCALE: 1:1 SHEET 2 OF 2