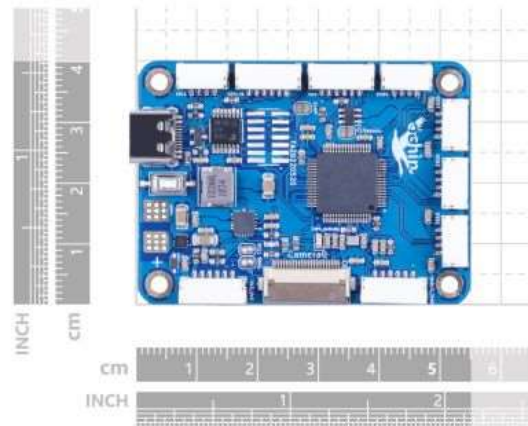
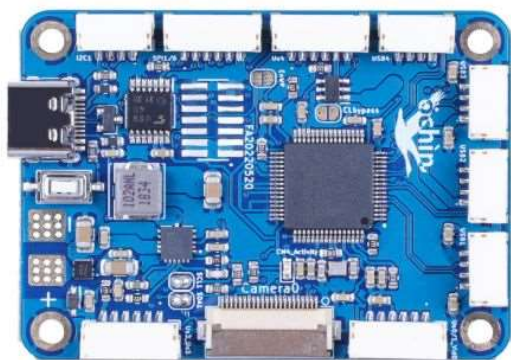


## Ochin Tiny Carrier Board for Raspberry Pi Compute Module 4

SKU 103100163



The Ochin CM4 is a tiny carrier board for the Raspberry Pi Compute Module equipped with the powerful Quad-core Cortex-A72 CPU and GPU, which features a big RAM size, the CODECs, and Graphic Accelerators. It's designed for a wide range of applications such as robotics, home automation, and IoT projects.

### Features

- **High-performance:** Broadcom BCM2711, Quad core Cortex-A72 (ARM v8) 64-bit SoC @ 1.5GHz
- **High Resolution Supported:** H.265 (HEVC) (up to 4Kp60 decode), H.264 (up to 1080p60 decode, 1080p30 encode) and OpenGL ES 3.0 graphics
- **Rich interfaces:** 1×USB 2.0 port (highspeed);MIPI CSI-2: 1×2-lane MIPI CSI camera port, 1×4-lane MIPI CSI camera port; 1×USART, 3×UART, 1×I2C port, 1×SPI port, Analog Video Output
- **Strong Compatibility:** Compatible with raspberry pi 4 modules with faster eMMC flash with up to 100 MB/s transfer rate, 4x faster than CM3+
- **Compact Design:** Same size as CM4 module, 55mm × 40mm × 4.7mm

## Specifications

### Processor:

- Broadcom BCM2711, Quad-core Cortex-A72 (ARM v8) 64-bit SoC @ 1.5GHz

### Resolution:

- H.265 (HEVC) (up to 4Kp60 decode), H.264 (up to 1080p60 decode, 1080p30 encode)
- OpenGL ES 3.0 graphics

### Interface:

- 1×USB 2.0 port (highspeed)
- MIPI CSI-2: o 1×2-lane MIPI CSI camera port, 1×4-lane MIPI CSI camera port
- 1×USART, 3×UART, 1×I2C port, 1×SPI port, Analog Video Output

### Dimensions:

- 55mm × 40mm × 4.7mm

## Applications

- Audio/video manipulation and streaming
- Neural networks
- Machine learning
- Computer vision
- Robotics
- Drones
- Home automation
- IoT projects