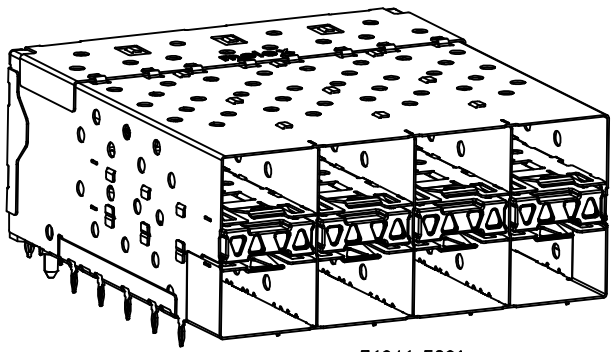


NOTES

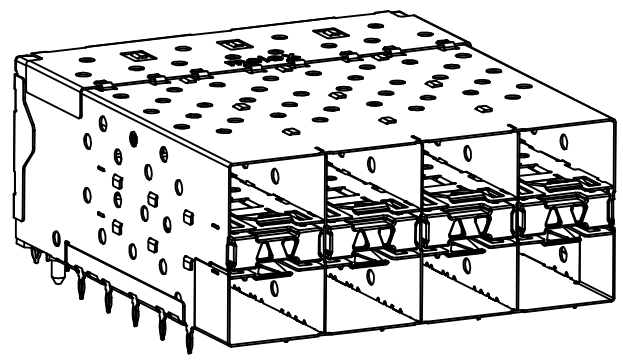
- MATERIAL:
  - CAGE: NICKEL SILVER, THICKNESS: 0.25mm
  - CONNECTOR HOUSING: GLASS FILLED LIQUID CRYSTAL POLYMER (LCP), UL 94V-0, COLOR: BLACK
  - OVERMOLD TERMINAL HOUSING: GLASS FILLED LIQUID CRYSTAL POLYMER (LCP), UL 94V-0, COLOR: BLACK
  - TERMINALS: TIN BRASS
  - LIGHTPIPE HOUSING: ZINC
  - LIGHTPIPER: POLYCARBONATE, COLOR: CLEAR
- FINISHES:
  - TERMINALS: CONTACT AREA: 0.76 MICROMETERS MINIMUM HARD GOLD OVER 1.27 MICROMETERS MINIMUM NICKEL.
  - COMPLIANT TAIL: 0.76 TO 1.52 MICROMETERS MATTE TIN OVER 0.76 MICROMETERS MINIMUM NICKEL.
  - LIGHTPIPE HOUSING: 80 MICROMETERS MINIMUM NICKEL OVER COPPER
- REFER TO PS-75310-001 PRODUCT SPEC FOR ALL ELECTRICAL, MECHANICAL AND ENVIRONMENTAL SPECIFICATIONS.
- LIGHT PIPE PAD LAYOUT IS FOR 0805 LOW-PROFILE LED PACKAGE, FOR OTHER RECOMMENDED LAYOUTS REFER TO MOLEX'S REPORT TS-75310-001.
- REFER TO PK-75450-001 FOR ALL PACKAGING SPECIFICATIONS.
- ALL EXTERIOR SURFACES TO BE CLASS "B" SURFACE EXCEPT THE UNDER SIDE OF THE CAGE (CLASS "C") WHERE THE PCB WOULD BE LOCATED AND AS OTHERWISE NOTED.
- THE SURFACES TO CONFORM TO THE MOLEX COSMETIC DOC PS-45499-002.
- REFER TO AS-76090-001 FOR HIGH SPEED ROUTING RECOMMENDATIONS.
- DATE CODE LOCATION IS SHOWN ABOVE.
  - DATE CODE FORMAT: DDDY MX A1
  - DDD = DAY OF THE YEAR
  - Y = YEAR
  - MX = MOLEX
  - A = ALPHA CHARACTER - INDICATES MANUFACTURING LINE
  - 1 = NUMERIC CHARACTER - INDICATES PRODUCTION SHIFT

| PART NUMBER | LIGHT PIPE CONFIGURATION - SEE SHEET 2 | CAGE PLATING |
|-------------|--|--------------|
| 76046-5901  | 4 LIGHT PORTS                          | NONE         |
|             | INNER 2 PORTS                          | NONE         |
|             | OUTER 2 PORTS                          | NONE         |

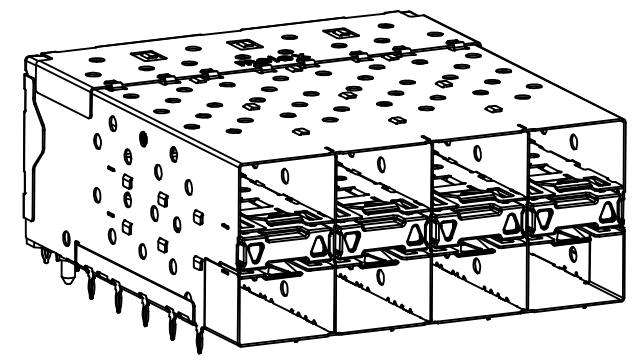
|   |                       |  |  |   |   |                        |
|---|-----------------------|--|--|---|---|------------------------|
| INITIAL RELEASE<br>EC NO: UCP2014-0581<br>DRWN:BBARKER 2013/08/06<br>CHKD:<br>APPR:SMILLER 2013/12/20 | QUALITY SYMBOLS       | GENERAL TOLERANCES (UNLESS SPECIFIED)                | DIMENSION STYLE<br><b>MM ONLY</b>      | SCALE<br><b>3:1</b>   | DESIGN UNITS<br><b>METRIC</b>   | THIRD ANGLE PROJECTION |
|   | ▽=0                   | mm INCH  | DRAWN BY DATE<br>BBARKER 2013/08/06    | TITLE   | <b>STACKED SFP+ 2X4 ASS'Y<br/>         NO GASKET/FLANGE<br/>         WITH LIGHTPIPER</b><br><b>molex</b><br>DOCUMENT NO. <b>RSD-76046-5900</b><br>SHEET NO. <b>1 OF 4</b> |                        |
|   | ▽=0                   | 4 PLACES ± --- ± ---                                 | CHECKED BY DATE<br>TIBARRA 2013/08/08  |   |   |                        |
|   | ▽=0                   | 3 PLACES ± --- ± ---                                 | APPROVED BY DATE<br>SMILLER 2013/12/20 |   |   |                        |
| ▽=0   | 2 PLACES ± 0.13 ± --- | MATERIAL NO.   |  |   |   |                        |
|   |                       | 1 PLACE ± 0.25 ± ---                                 | SIZE                                   | <b>SEE TABLE</b><br>THIS DRAWING CONTAINS INFORMATION THAT IS PROPRIETARY TO MOLEX INCORPORATED AND SHOULD NOT BE USED WITHOUT WRITTEN PERMISSION |   |                        |
|   |                       | 0 PLACE ± ±  |  |   |   |                        |
|   |                       | ANGULAR ± 5 °  |  |   |   |                        |
|   |                       | DRAFT WHERE APPLICABLE MUST REMAIN WITHIN DIMENSIONS |  |   |   |                        |



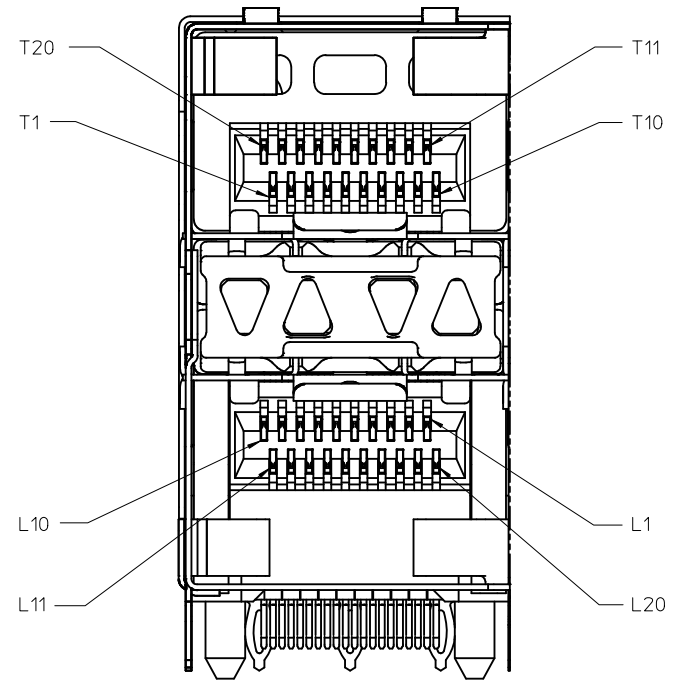
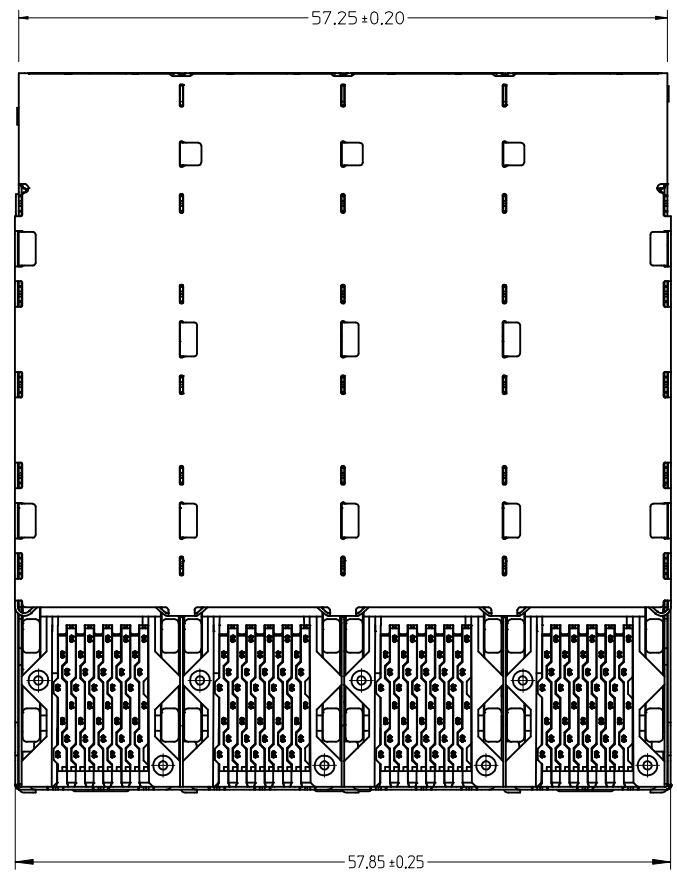
76046-5901  
WITH INNER & OUTER LIGHTPIPE PORTS



WITH INNER LIGHTPIPE PORTS

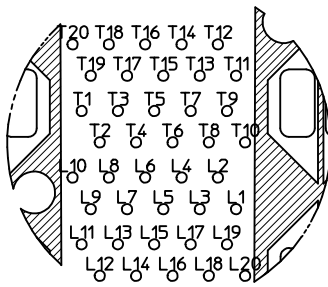


WITH OUTER LIGHTPIPE PORTS

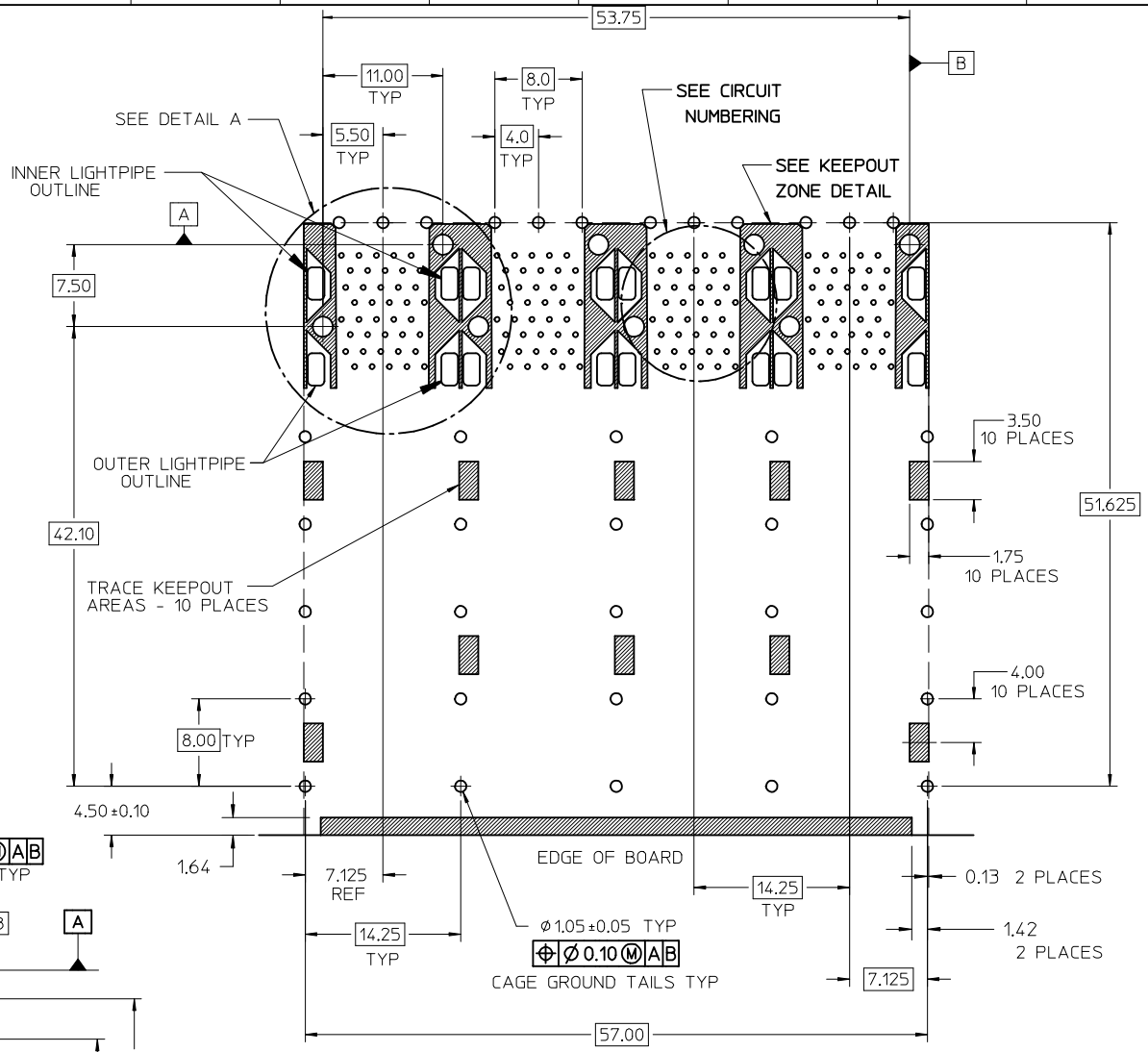


DETAIL B SCALE 6:1  
CIRCUIT NUMBERING AND LIGHTPIPE IDENTIFICATION

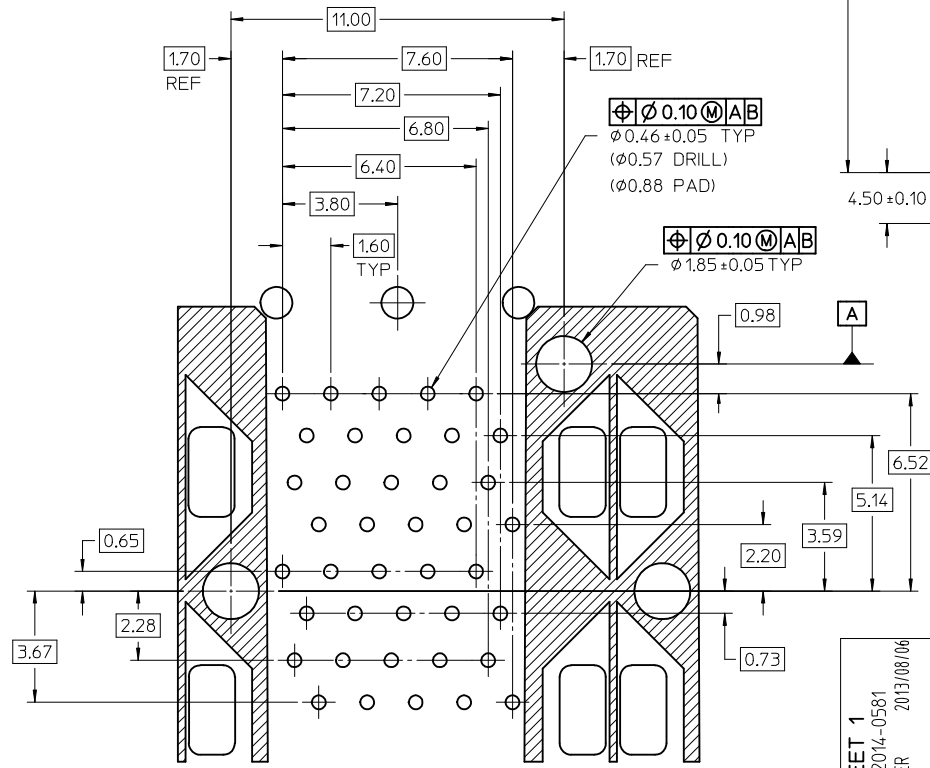
|   |  |   |  |  |  |   |                     |  |
|---|--|---|--|--|--|---|---------------------|--|
| SEE SHEET 1<br>EC NO: UCP2014-0581<br>DRWN:BBARKER 2013/08/06<br>CHKD:<br>APPR:SMILLER 2013/12/20<br>REVISIONS<br>A | QUALITY SYMBOLS<br>∇=0<br>∇=0<br>∇=0                 | GENERAL TOLERANCES (UNLESS SPECIFIED)<br>mm INCH<br>4 PLACES ± --- ± ---<br>3 PLACES ± --- ± ---<br>2 PLACES ± 0.13 ± ---<br>1 PLACE ± 0.25 ± ---<br>0 PLACE ± ±<br>ANGULAR ± 5 ° | DIMENSION STYLE<br>MM ONLY<br>DRAWN BY DATE<br>BBARKER 2013/08/06<br>CHECKED BY DATE<br>TIBARRA 2013/08/08<br>APPROVED BY DATE<br>SMILLER 2013/12/20 | SCALE 3:1<br>DESIGN UNITS METRIC<br>THIRD ANGLE PROJECTION | TITLE<br>STACKED SFP+ 2X4 ASS'Y<br>NO GASKET/FLANGE<br>WITH LIGHTPIPER<br><b>molex</b> | DOCUMENT NO.<br>RSD-76046-5900  | SHEET NO.<br>2 OF 4 |  |
|   | DRAFT WHERE APPLICABLE MUST REMAIN WITHIN DIMENSIONS |   | SEE TBL, SHT 1   | RSD-76046-5900   |  | THIS DRAWING CONTAINS INFORMATION THAT IS PROPRIETARY TO MOLEX INCORPORATED AND SHOULD NOT BE USED WITHOUT WRITTEN PERMISSION |                     |  |
|   |  |   | SIZE C   |  |  |   |                     |  |
|   |  |   |  |  |  |   |                     |  |



CIRCUIT NUMBERING  
COMPONENT SIDE OF BOARD

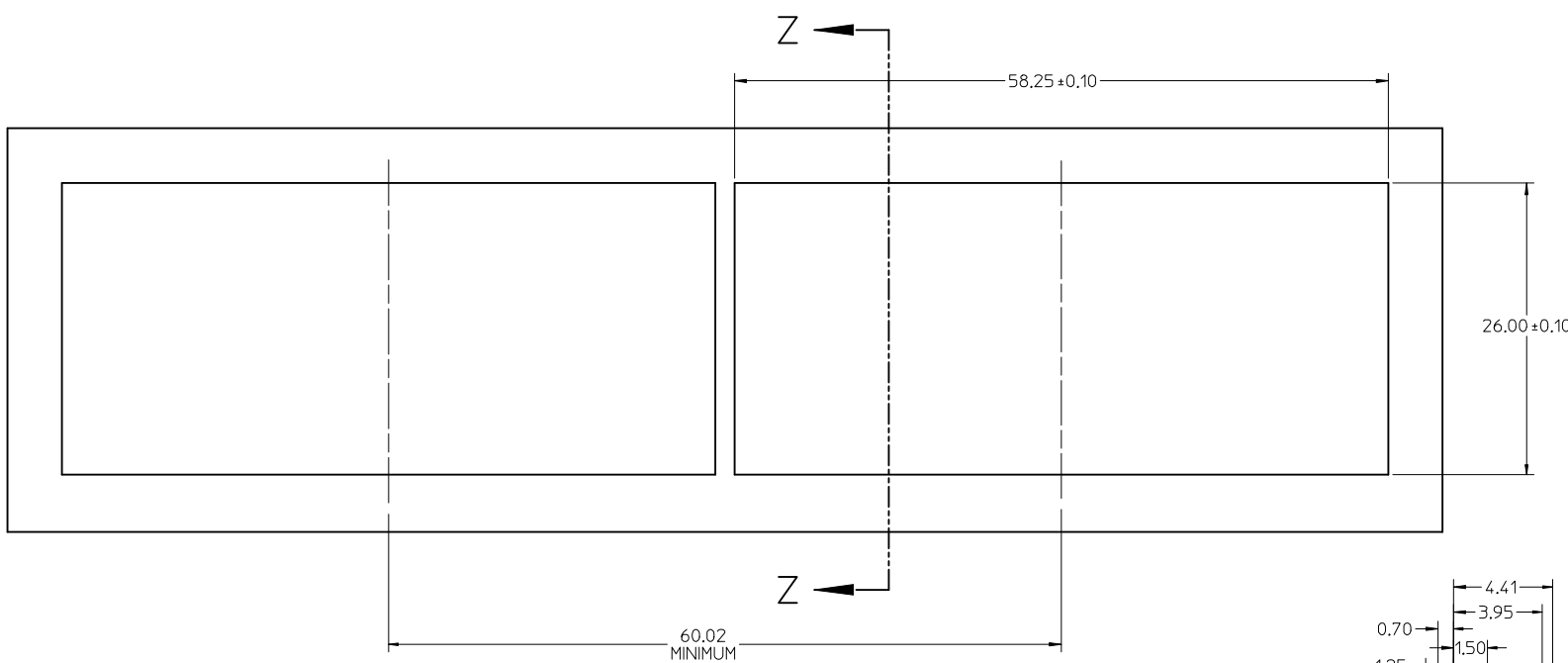


RECOMMENDED PCB LAYOUT - COMPONENT SIDE  
MINIMUM PCB THICKNESS OF 157MM  
THE ENTIRE AREA OF THE CONNECTOR FOOTPRINT  
TO BE CONSIDERED THE KEEP OUT AREA INDICATED  
BY THE DASHED LINE

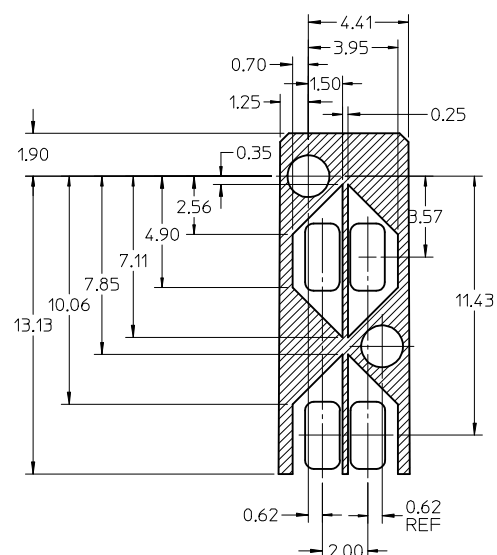


DETAIL A  
SCALE 8:1

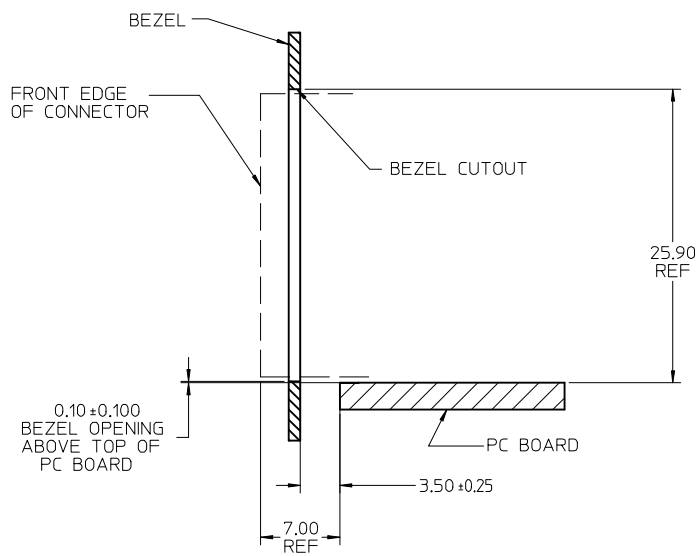
|  |                 |  |                    |   |              |                        |
|--|-----------------|--|--------------------|---|--------------|------------------------|
| SEE SHEET 1<br>EC NO: UCP2014-0581<br>DRAWN: BBARKER 2013/08/06<br>CHKD:<br>APPR: SMILLER 2013/12/20<br>REV: A | QUALITY SYMBOLS | GENERAL TOLERANCES (UNLESS SPECIFIED)                | DIMENSION STYLE    | SCALE   | DESIGN UNITS | THIRD ANGLE PROJECTION |
|  | ▽=0             | mm INCH  | MM ONLY            | 3:1   | METRIC       | ☉                      |
|  | ▽=0             | 4 PLACES ± --- ± ---                                 | DRAWN BY DATE      | TITLE   |              |                        |
|  | ▽=0             | 3 PLACES ± --- ± ---                                 | BBARKER 2013/08/06 | STACKED SFP+ 2X4 ASS'Y  |              |                        |
|  |                 | 2 PLACES ± 0.13 ± ---                                | CHECKED BY DATE    |   |              |                        |
|  |                 | 1 PLACE ± 0.25 ± ---                                 | TIBARRA 2013/08/08 |   |              |                        |
|  |                 | 0 PLACE ± ±  | APPROVED BY DATE   |   |              |                        |
|  |                 |  | SMILLER 2013/12/20 |   |              |                        |
|  |                 | ANGULAR ± 5°   | MATERIAL NO.       | DOCUMENT NO.  |              |                        |
|  |                 | DRAFT WHERE APPLICABLE MUST REMAIN WITHIN DIMENSIONS | SEE TBL, SHT 1     | RSD-76046-5900  |              |                        |
|  |                 |  | SIZE C             | THIS DRAWING CONTAINS INFORMATION THAT IS PROPRIETARY TO MOLEX INCORPORATED AND SHOULD NOT BE USED WITHOUT WRITTEN PERMISSION |              |                        |



BEZEL CUTOUT CENTER SPACING DETAIL  
BEZEL THICKNESS 0.8-2.6

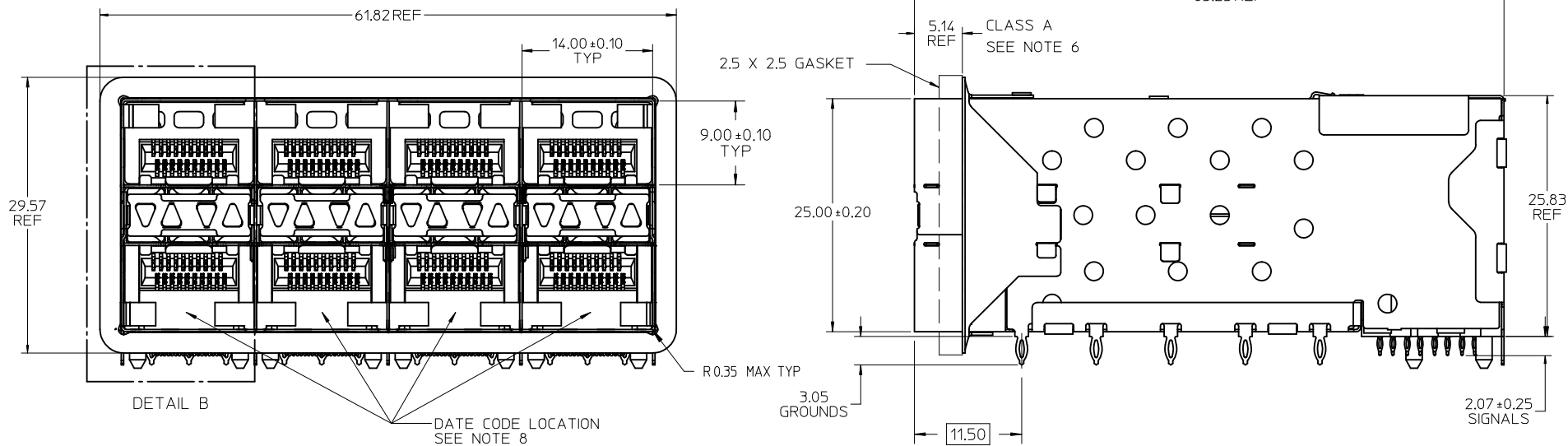


KEEP OUT ZONE DETAIL - LIGHTPIPE LOCATION AND OTHER ZONES  
SCALE 6:1



SECTION Z-Z

|   |                 |                                       |  |                     |   |                        |
|---|-----------------|---------------------------------------|--|---------------------|---|------------------------|
| SEE SHEET 1<br>EC NO: UCP2014-0581<br>DRWN:BBARKER 2013/08/06<br>CHKD:<br>APPR:SMILLER 2013/12/20<br>REV: A | QUALITY SYMBOLS | GENERAL TOLERANCES (UNLESS SPECIFIED) | DIMENSION STYLE<br><b>MM ONLY</b>                          | SCALE<br><b>3:1</b> | DESIGN UNITS<br><b>METRIC</b>   | THIRD ANGLE PROJECTION |
|   | ▽=0             | mm INCH                               | DRAWN BY<br>BBARKER  | DATE<br>2013/08/06  | TITLE<br><b>STACKED SFP+ 2X4 ASS'Y<br/>NO GASKET/FLANGE<br/>WITH LIGHTPIPES</b>   |                        |
|   | ▽=0             | 4 PLACES ± --- ± ---                  | CHECKED BY<br>TIBARRA                                      | DATE<br>2013/08/08  | DOCUMENT NO.<br><b>RSD-76046-5900</b>   |                        |
|   | ▽=0             | 3 PLACES ± --- ± ---                  | APPROVED BY<br>SMILLER                                     | DATE<br>2013/12/20  | SHEET NO.<br>4 OF 4   |                        |
|   | ▽=0             | 2 PLACES ± 0.13 ± ---                 | MATERIAL NO.<br><b>SEE TBL, SHT 1</b>                      |                     | THIS DRAWING CONTAINS INFORMATION THAT IS PROPRIETARY TO MOLEX.<br>INCORPORATED AND SHOULD NOT BE USED WITHOUT WRITTEN PERMISSION |                        |
|   |                 | 1 PLACE ± 0.25 ± ---                  | ANGULAR ± 5 °  |                     |   |                        |
|   |                 | 0 PLACE ± ±                           | DRAFT WHERE APPLICABLE<br>MUST REMAIN<br>WITHIN DIMENSIONS |                     |   |                        |



**NOTES**

**1. MATERIAL:**

- CAGE: NICKEL SILVER, THICKNESS: 0.25mm
- CONNECTOR HOUSING: GLASS FILLED LIQUID CRYSTAL POLYMER (LCP), UL 94V-0, COLOR: BLACK
- OVERMOLD TERMINAL HOUSING: GLASS FILLED LIQUID CRYSTAL POLYMER (LCP), UL 94V-0, COLOR: BLACK
- TERMINALS: TIN BRASS
- EMI GASKET: CONDUCTIVE ELASTOMER
- LIGHTPIPE HOUSING: ZINC
- LIGHTPIPES: POLYCARBONATE, COLOR: CLEAR

**2. FINISHES:**

- TERMINALS: CONTACT AREA: 0.76 MICROMETERS MINIMUM HARD GOLD OVER 1.27 MICROMETERS MINIMUM NICKEL.
- COMPLIANT TAIL - MATTE TIN/LEAD OPTION: 0.76 TO 1.52 MICROMETERS 90/10 MATTE TIN-LEAD OVER 0.76 MICROMETERS MINIMUM NICKEL.
- COMPLIANT TAIL - MATTE TIN OPTION: 0.76 TO 1.52 MICROMETERS MATTE TIN OVER 0.76 MICROMETERS MINIMUM NICKEL.
- LIGHTPIPE HOUSING: 80 MICROMETERS MINIMUM NICKEL OVER COPPER

- 3. REFER TO PS-75310-001 PRODUCT SPEC FOR ALL ELECTRICAL, MECHANICAL AND ENVIRONMENTAL SPECIFICATIONS.
- 4. LIGHT PIPE PAD LAYOUT IS FOR 0805 LOW-PROFILE LED PACKAGE, FOR OTHER RECOMMENDED LAYOUTS REFER TO MOLEX'S REPORT TS-75310-001.
- 5. REFER TO PK-75450-001 FOR ALL PACKAGING SPECIFICATIONS.
- 6. ALL EXTERIOR SURFACES TO BE CLASS 'B' SURFACE EXCEPT THE UNDER SIDE OF THE CAGE WHERE THE PCB WOULD BE LOCATED AND AS NOTED. THE SURFACES TO CONFORM TO THE MOLEX COSMETIC DOC PS-45499-002.
- 7. REFER TO AS-76090-001 FOR HIGH SPEED ROUTING RECOMMENDATIONS.
- 8. DATE CODE LOCATION IS SHOWN ABOVE.

DATE CODE FORMAT: DDDY MX A1

DDD = DAY OF THE YEAR

Y = YEAR

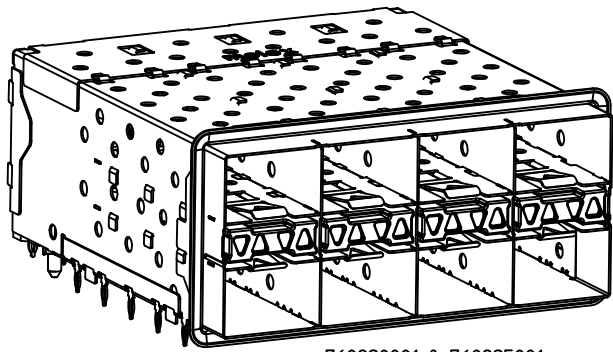
MX = MOLEX

A = ALPHA CHARACTER - INDICATES MANUFACTURING LINE

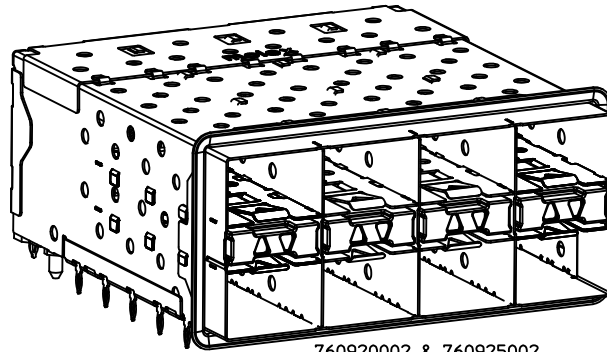
1 = NUMERIC CHARACTER - INDICATES PRODUCTION SHIFT

| PART NUMBER | DESCRIPTION   | VIEW     | COMPLIANT TAIL PLATING | CAGE PLATING |
|-------------|---------------|----------|------------------------|--------------|
| 760920001   | 4 LIGHT PORTS | SEE PG 2 | MATTE TIN / LEAD       | N/A          |
| 760920002   | INNER 2 PORTS | SEE PG 2 | MATTE TIN / LEAD       | N/A          |
| 760920003   | OUTER 2 PORTS | SEE PG 2 | MATTE TIN / LEAD       | N/A          |
| 760925001   | 4 LIGHT PORTS | SEE PG 2 | MATTE TIN              | N/A          |
| 760925002   | INNER 2 PORTS | SEE PG 2 | MATTE TIN              | N/A          |
| 760925003   | OUTER 2 PORTS | SEE PG 2 | MATTE TIN              | N/A          |

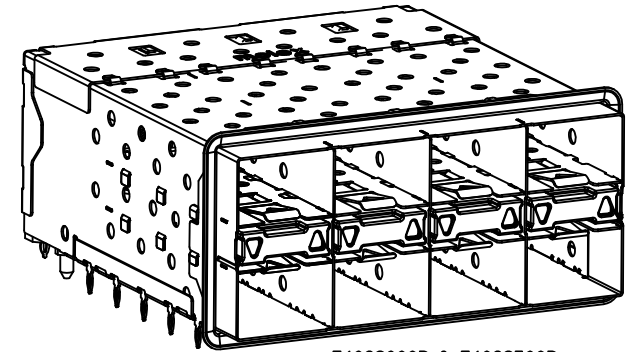
| <b>ADD NOTE 7 &amp; 8</b><br>EC NO: UCP2011-2594<br>DR: WIMOLFE 2011/02/28<br>CHK: BBARKER 2011/02/28<br>APPR: SMILLER 2011/09/20 | DESCRIPTION<br>QUALITY SYMBOLS<br>▽=0<br>▽=0<br>▽=0 | GENERAL TOLERANCES (UNLESS SPECIFIED)   |       | DIMENSION STYLE<br><b>MM ONLY</b>                |    | SCALE<br><b>3:1</b> | DESIGN UNITS<br><b>METRIC</b> | THIRD ANGLE PROJECTION |       |          |       |       |          |        |       |         |        |       |                                   |  |   |  |  |  |
|---|---|---|-------|--|----|---------------------|-------------------------------|------------------------|-------|----------|-------|-------|----------|--------|-------|---------|--------|-------|-----------------------------------|--|---|--|--|--|
|   |   | <table border="1"> <thead> <tr> <th></th> <th>mm</th> <th>INCH</th> </tr> </thead> <tbody> <tr> <td>4 PLACES</td> <td>± ---</td> <td>± ---</td> </tr> <tr> <td>3 PLACES</td> <td>± ---</td> <td>± ---</td> </tr> <tr> <td>2 PLACES</td> <td>± 0.13</td> <td>± ---</td> </tr> <tr> <td>1 PLACE</td> <td>± 0.25</td> <td>± ---</td> </tr> </tbody> </table> |       |  | mm | INCH                | 4 PLACES                      | ± ---                  | ± --- | 3 PLACES | ± --- | ± --- | 2 PLACES | ± 0.13 | ± --- | 1 PLACE | ± 0.25 | ± --- | DRAWN BY DATE<br>JLONG 01-26-2007 |  | TITLE<br><b>STACKED SFP+ 2X4 ASS'Y WITH ELASTOMERIC GASKET AND LIGHTPIPES</b> |  |  |  |
|   |   |   | mm    | INCH   |    |                     |                               |                        |       |          |       |       |          |        |       |         |        |       |                                   |  |   |  |  |  |
|   |   | 4 PLACES  | ± --- | ± ---  |    |                     |                               |                        |       |          |       |       |          |        |       |         |        |       |                                   |  |   |  |  |  |
| 3 PLACES  | ± ---   | ± ---   |       |  |    |                     |                               |                        |       |          |       |       |          |        |       |         |        |       |                                   |  |   |  |  |  |
| 2 PLACES  | ± 0.13  | ± ---   |       |  |    |                     |                               |                        |       |          |       |       |          |        |       |         |        |       |                                   |  |   |  |  |  |
| 1 PLACE   | ± 0.25  | ± ---   |       |  |    |                     |                               |                        |       |          |       |       |          |        |       |         |        |       |                                   |  |   |  |  |  |
| ANGULAR ± 5 °   |   | CHECKED BY DATE<br>MSANDBERG 01-26-2007   |       | APPROVED BY DATE<br>RNELSON 01-26-2007           |    |                     |                               |                        |       |          |       |       |          |        |       |         |        |       |                                   |  |   |  |  |  |
| DRAFT WHERE APPLICABLE MUST REMAIN WITHIN DIMENSIONS  |   | SEE TABLE   |       | MATERIAL NO. DOCUMENT NO.<br><b>SD-76092-001</b> |    |                     |                               | SHEET NO.<br>1 OF 4    |       |          |       |       |          |        |       |         |        |       |                                   |  |   |  |  |  |



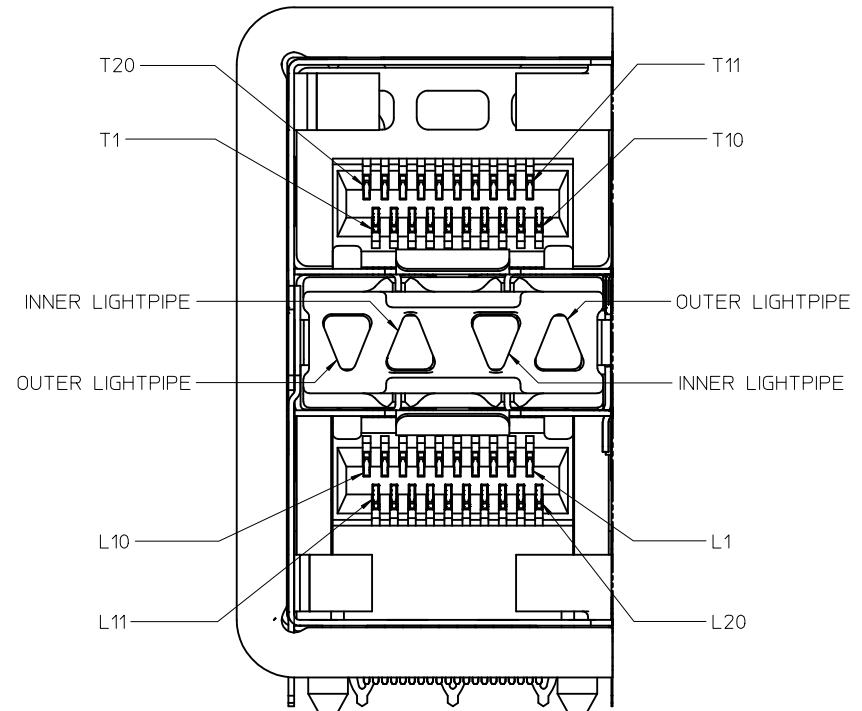
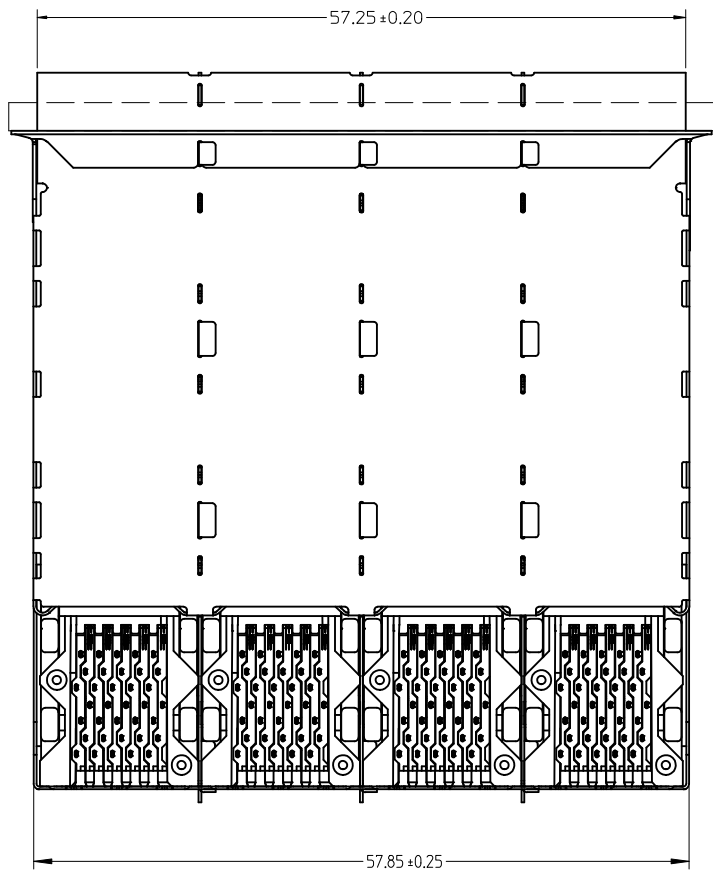
760920001 & 760925001  
WITH INNER & OUTER LIGHTPIPE PORTS



760920002 & 760925002  
WITH INNER LIGHTPIPE PORTS

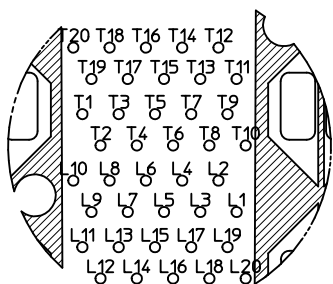


760920003 & 760925003  
WITH OUTER LIGHTPIPE PORTS

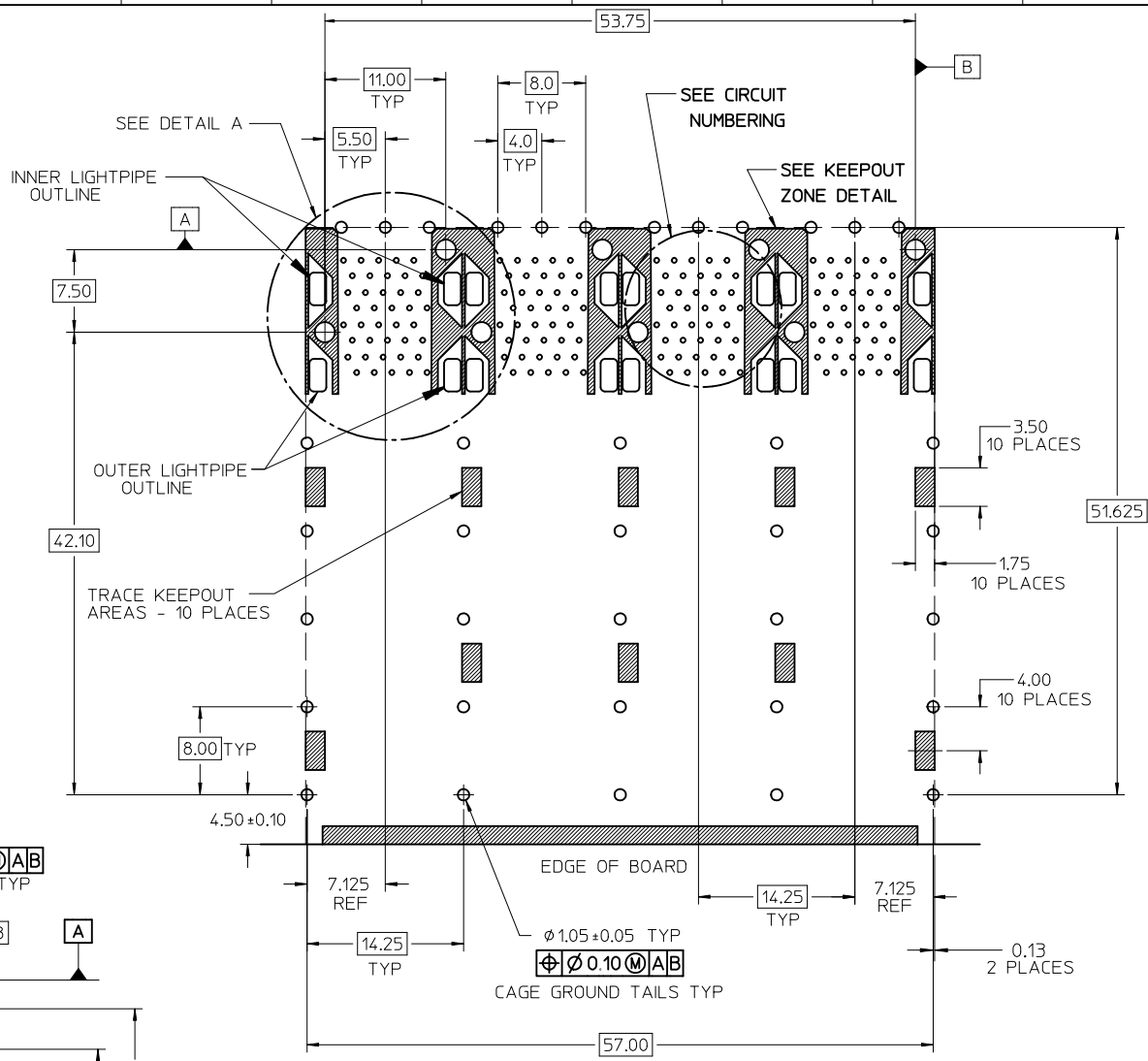


DETAIL B SCALE 6:1  
CIRCUIT NUMBERING AND LIGHTPIPE IDENTIFICATION

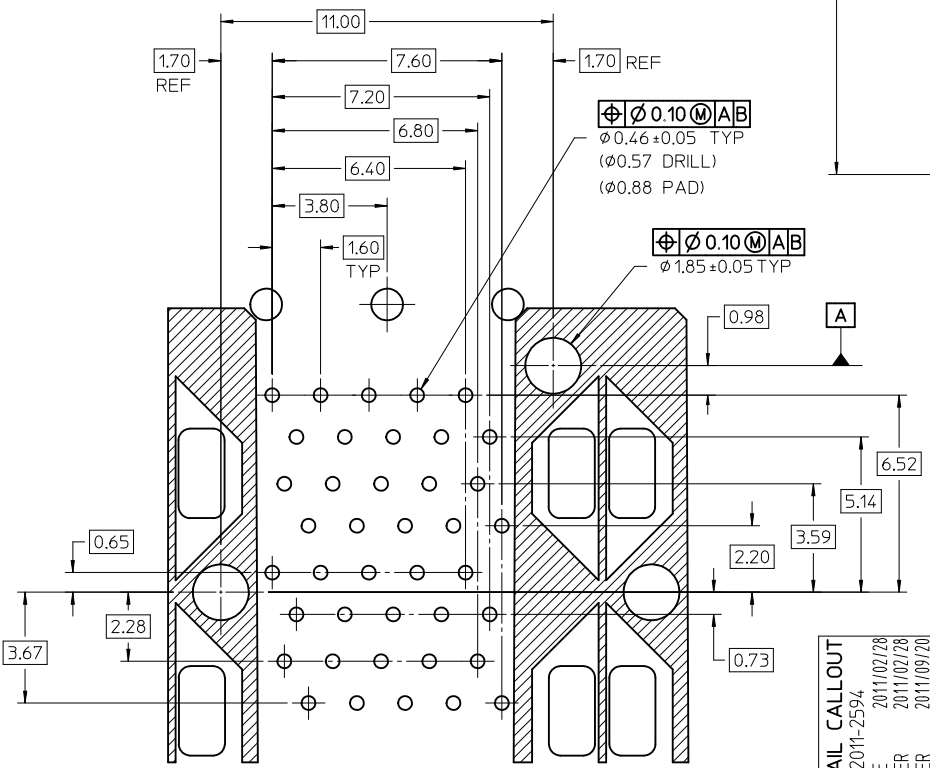
|   |                                      |                                       |                      |   |                     |  |                                     |                            |
|---|--------------------------------------|---------------------------------------|----------------------|---|---------------------|--|-------------------------------------|----------------------------|
| <b>ADD DETAIL B</b><br>EC NO: UCP2011-2594<br>DRWN:WOLFE 2011/02/28<br>CHKD:BBARKER 2011/02/28<br>APPR:SMILLER 2011/09/20 | QUALITY SYMBOLS<br>▽=0<br>▽=0<br>▽=0 | GENERAL TOLERANCES (UNLESS SPECIFIED) |                      | DIMENSION STYLE<br><b>MM ONLY</b>   | SCALE<br><b>3:1</b> | DESIGN UNITS<br><b>METRIC</b>  | THIRD ANGLE PROJECTION              |                            |
|   |                                      | 4 PLACES ± --- ± ---                  | 3 PLACES ± --- ± --- | DRAWN BY<br>JLONG   | DATE<br>01-26-2007  | <b>STACKED SFP+ 2X4 ASS'Y WITH ELASTOMERIC GASKET AND LIGHTPIPES</b> |                                     |                            |
|   |                                      | 2 PLACES ± 0.13 ± ---                 | 1 PLACE ± 0.25 ± --- | CHECKED BY<br>MSANDBERG   | DATE<br>01-26-2007  | <b>MOLEX INCORPORATED</b>  |                                     |                            |
|   |                                      | ANGULAR ± 5 °                         |                      | APPROVED BY<br>RNELSON  | DATE<br>01-26-2007  | MATERIAL NO.<br><b>SEE TABLE</b>                                     | DOCUMENT NO.<br><b>SD-76092-001</b> | SHEET NO.<br><b>2 OF 4</b> |
| DRAFT WHERE APPLICABLE MUST REMAIN WITHIN DIMENSIONS  |                                      | SIZE<br><b>C</b>                      |                      | THIS DRAWING CONTAINS INFORMATION THAT IS PROPRIETARY TO MOLEX INCORPORATED AND SHOULD NOT BE USED WITHOUT WRITTEN PERMISSION |                     |  |                                     |                            |



CIRCUIT NUMBERING  
COMPONENT SIDE OF BOARD



RECOMMENDED PCB LAYOUT - COMPONENT SIDE  
MINIMUM PCB THICKNESS OF 1.57MM  
THE ENTIRE AREA OF THE CONNECTOR FOOTPRINT  
TO BE CONSIDERED THE KEEP OUT AREA INDICATED  
BY THE DASHED LINE

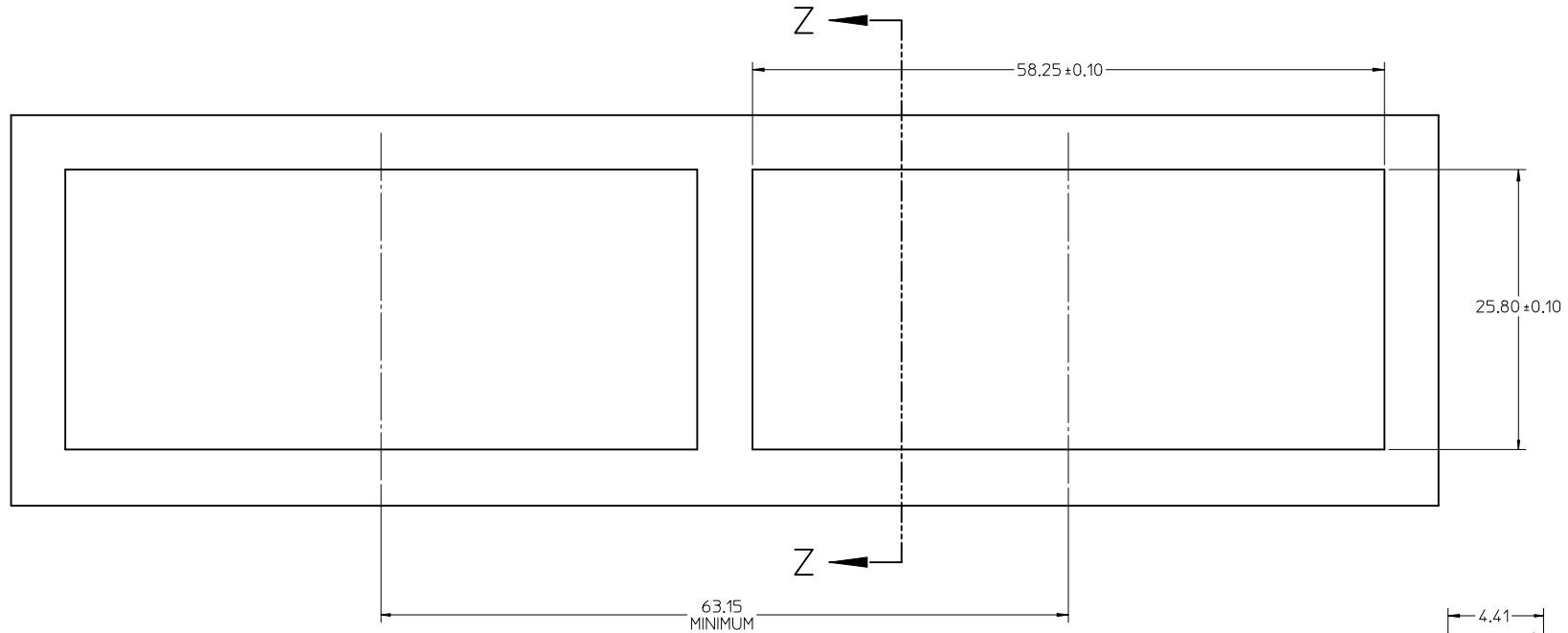


DETAIL A  
SCALE 8:1

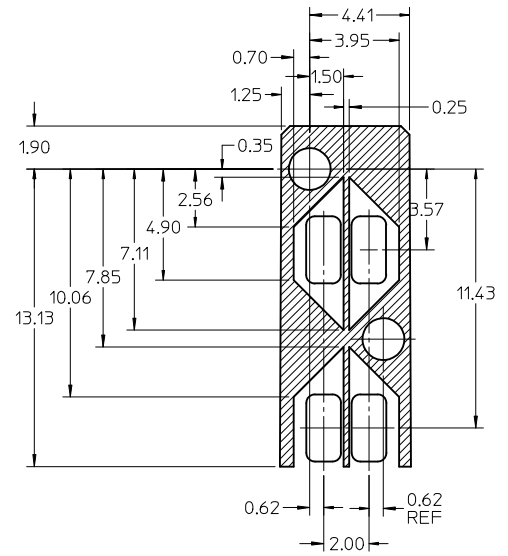
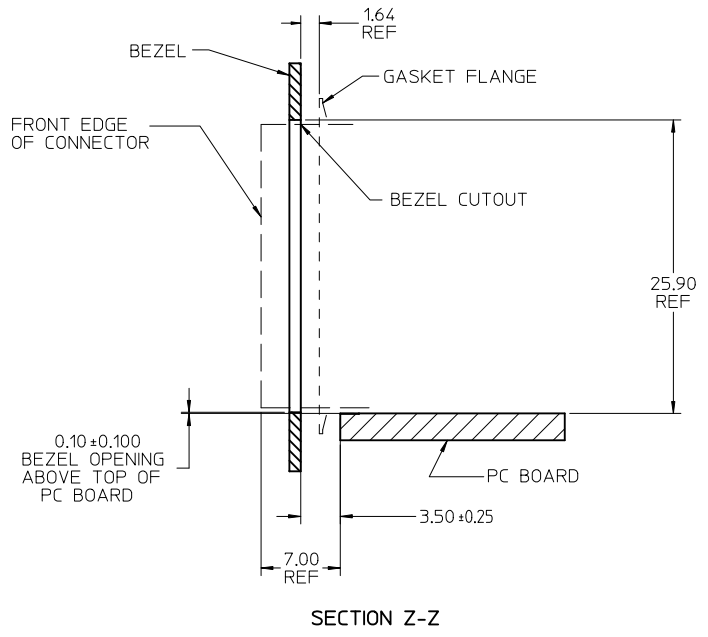
|                     |             |                        |
|---------------------|-------------|------------------------|
| CHG DETAIL CALLOUT  | 2011/02/28  | QUALITY SYMBOLS        |
| EC NO: UCP2011-2594 | 2011/02/28  | $\nabla = \varnothing$ |
| DRWN: MWOLFE        | 2011/02/28  | $\nabla = \varnothing$ |
| CHKD: BARKER        | 2011/02/28  | $\nabla = \varnothing$ |
| APPR: SMILLER       | 2011/09/20  |                        |
| REV                 | DESCRIPTION |                        |

|  |                 |              |   |                        |
|--|-----------------|--------------|---|------------------------|
| GENERAL TOLERANCES (UNLESS SPECIFIED)                | DIMENSION STYLE | SCALE        | DESIGN UNITS  | THIRD ANGLE PROJECTION |
|  | MM ONLY         | 3:1          | METRIC  |                        |
| 4 PLACES ± ---                                       | DRAWN BY        | DATE         | TITLE   |                        |
| 3 PLACES ± ---                                       | JLONG           | 01-26-2007   | STACKED SFP+ 2X4 ASS'Y WITH ELASTOMERIC GASKET AND LIGHTPIPES |                        |
| 2 PLACES ± 0.13                                      | CHECKED BY      | DATE         |   |                        |
| 1 PLACE ± 0.25                                       | MSANDBERG       | 01-26-2007   |   |                        |
| ANGULAR ± 5 °  | APPROVED BY     | DATE         |   |                        |
|  | RNELSON         | 01-26-2007   |   |                        |
| DRAFT WHERE APPLICABLE MUST REMAIN WITHIN DIMENSIONS | MATERIAL NO.    | DOCUMENT NO. |   |                        |
|  | SEE TABLE       | SD-76092-001 |   |                        |
|  | SIZE C          |              |   |                        |

|   |              |           |
|---|--------------|-----------|
| MATERIAL NO.  | DOCUMENT NO. | SHEET NO. |
| SEE TABLE   | SD-76092-001 | 3 OF 4    |
| THIS DRAWING CONTAINS INFORMATION THAT IS PROPRIETARY TO MOLEX INCORPORATED AND SHOULD NOT BE USED WITHOUT WRITTEN PERMISSION |              |           |



BEZEL CUTOUT CENTER SPACING DETAIL  
BEZEL THICKNESS 0.8-2.6



KEEP OUT ZONE DETAIL - LIGHTPIPE LOCATION AND OTHER ZONES  
SCALE 6:1

|   |                                      |   |                      |  |                      |                         |                               |   |  |
|---|--------------------------------------|---|----------------------|--|----------------------|-------------------------|-------------------------------|---|--|
| DELETE MIDDLE BEZEL DIM<br>EC NO: UCP2011-2594<br>DRAWN: WOLFE 2011/02/28<br>CHKD: BBARKER 2011/02/28<br>APPR: SMILLER 2011/09/20 | QUALITY SYMBOLS<br>∇=0<br>∇=0<br>∇=0 | GENERAL TOLERANCES (UNLESS SPECIFIED)   |                      | DIMENSION STYLE<br><b>MM ONLY</b>                    |                      | SCALE<br><b>3:1</b>     | DESIGN UNITS<br><b>METRIC</b> | THIRD ANGLE PROJECTION  |  |
|   |                                      | 4 PLACES ± --- ± ---  | 3 PLACES ± --- ± --- | 2 PLACES ± 0.13 ± ---                                | 1 PLACE ± 0.25 ± --- | DRAWN BY<br>JLONG       | DATE<br>01-26-2007            | TITLE<br><b>STACKED SFP+ 2X4 ASS'Y WITH ELASTOMERIC GASKET AND LIGHTPIPES</b> |  |
|   |                                      | ANGULAR ± 5 °   |                      | DRAFT WHERE APPLICABLE MUST REMAIN WITHIN DIMENSIONS |                      | CHECKED BY<br>MSANDBERG | DATE<br>01-26-2007            | APPROVED BY<br>RNELSON 01-26-2007   |  |
|   |                                      | SEE TABLE   |                      | MATERIAL NO.   |                      | DOCUMENT NO.            |                               | SHEET NO.   |  |
| SIZE  |                                      | THIS DRAWING CONTAINS INFORMATION THAT IS PROPRIETARY TO MOLEX INCORPORATED AND SHOULD NOT BE USED WITHOUT WRITTEN PERMISSION |                      | SD-76092-001   |                      | 4 OF 4                  |                               |   |  |