

CONSTRUCTION:

- BODY ----- ZINC ALLOY
- HOUSING ----- POLYESTER BUTYLENE TEREPHTHALATE (BLACK)
- CENTER CONTACT -- PHOSPHOR BRONZE
- DIELECTRIC ----- POLYPROPYLENE (94V0)
- MOUNTING POST --- BRASS
- SOLDER TAIL ----- COPPER OVER STEEL WIRE
- LOCK WASHER ----- PHOSPHOR BRONZE
- NUT ----- BRASS

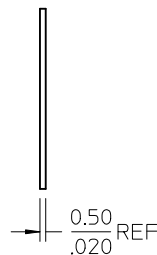
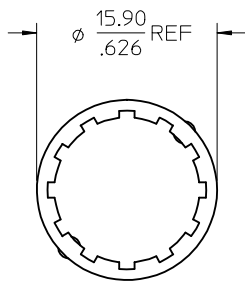
FINISH:

- BODY ----- NICKEL
- CENTER CONTACT -- GOLD
- SOLDER TAIL ----- TIN
- MOUNTING POST --- TIN
- LOCK WASHER ----- NICKEL
- NUT ----- NICKEL

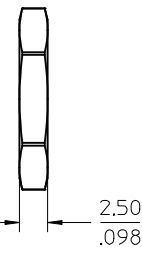
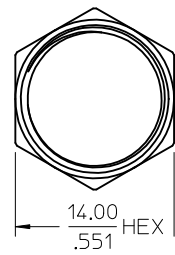
PACKAGING ----- TRAY

ENGINEERING SPEC

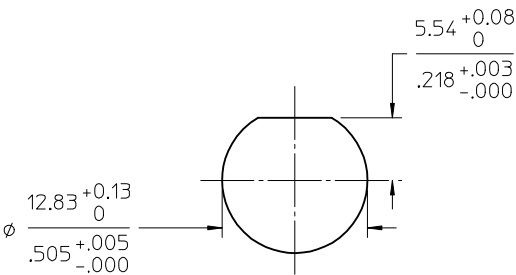
TEMPERATURE RATING: -55°C TO +85°C



LOCKWASHER



JAM NUT



RECOMMENDED MOUNTING HOLE
 MAX PANEL THICKNESS: 5.5MM
 RECOMMENDED MOUNTING TORQUE:
 5 INCH-POUNDS MAX

PART # 73131-5003

PS-73598-0061	ELEC/MECH PERFORMANCE
SPECIFICATION	DESCRIPTION

CHG: PS -61 WAS -50 PP(94V0 WAS 94V2) PER RF14-E112 EC NO: URF2014-0545 DRWN:WE102 2014/03/26 CHKD: APPR:MHUANG 2014/04/16 DESCRIPTION	QUALITY SYMBOLS	GENERAL TOLERANCES (UNLESS SPECIFIED) <table border="1"> <tr> <th></th> <th>mm</th> <th>INCH</th> </tr> <tr> <td>4 PLACES ±</td> <td>---</td> <td>---</td> </tr> <tr> <td>3 PLACES ±</td> <td>---</td> <td>---</td> </tr> <tr> <td>2 PLACES ±</td> <td>---</td> <td>---</td> </tr> <tr> <td>1 PLACE ±</td> <td>---</td> <td>---</td> </tr> </table> ANGULAR ± 2 ° DRAFT WHERE APPLICABLE MUST REMAIN WITHIN DIMENSIONS		mm	INCH	4 PLACES ±	---	---	3 PLACES ±	---	---	2 PLACES ±	---	---	1 PLACE ±	---	---	DIMENSION STYLE MM/IN DRAWN BY DATE IRIS WANG 1991/01/21 CHECKED BY DATE APPROVED BY DATE	SCALE DESIGN UNITS METRIC THIRD ANGLE PROJECTION	TITLE BNC, JACK PCB VERTICAL 50 OHM BNC-JACK MOLEX INCORPORATED
			mm	INCH																
	4 PLACES ±		---	---																
	3 PLACES ±		---	---																
2 PLACES ±	---	---																		
1 PLACE ±	---	---																		
MATERIAL NO. 731315003	SHEET NO. 1 OF 1																			
THIS DRAWING CONTAINS INFORMATION THAT IS PROPRIETARY TO MOLEX INCORPORATED AND SHOULD NOT BE USED WITHOUT WRITTEN PERMISSION																				
REV D2																				