

DESIGNED & DIMENSIONED  
IN MILLIMETERS [INCHES]

DIN7A-J-P-XX-RA-BH1-X

SERIES  
-7A: 75 OHM DIN 1.0/2.3

GENDER  
-J: JACK

TYPE  
-P: PCB

PACKAGING  
-BLANK: INDIVIDUALLY BAGGED  
-B: BULK PACKAGE (QTY=100 MAX)

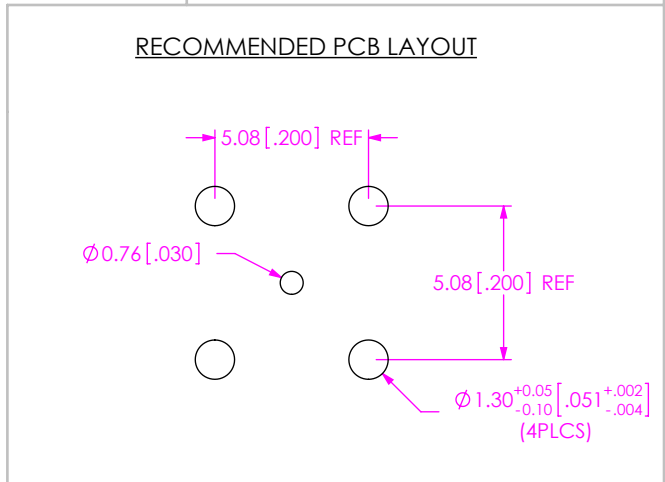
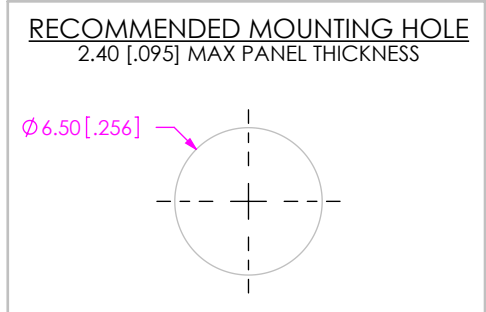
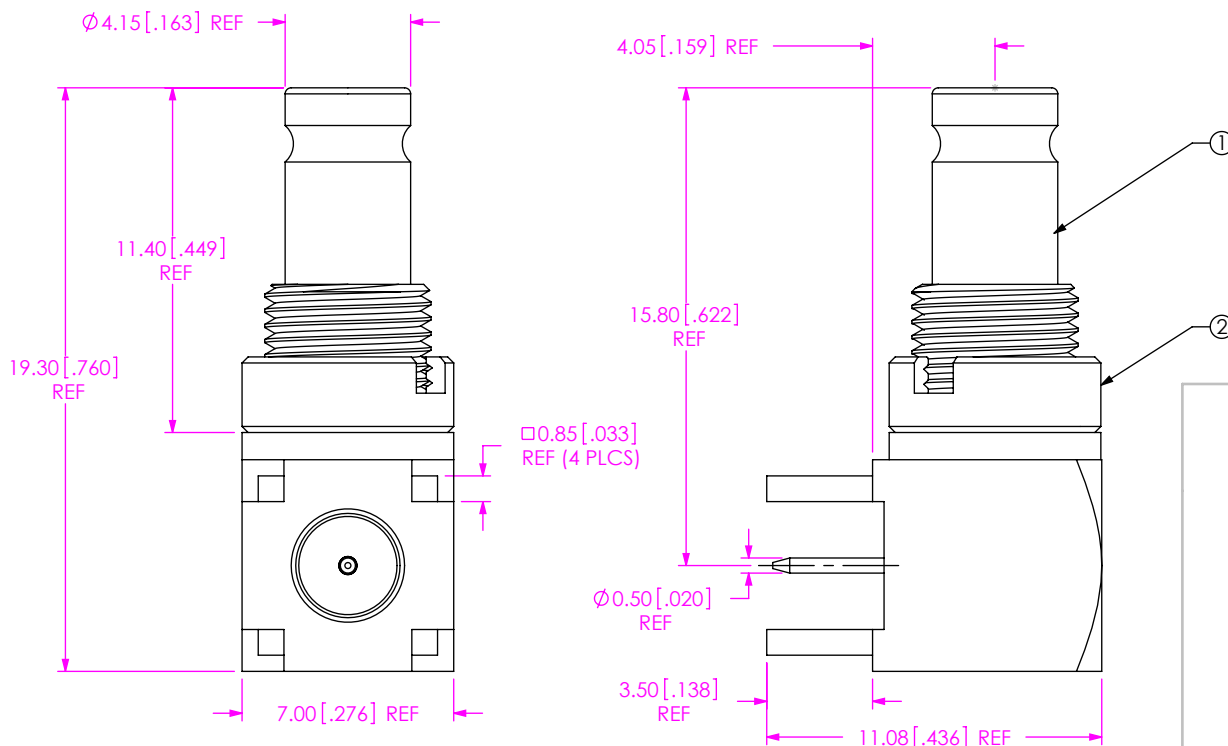
TERMINATION  
-BH1: BULKHEAD THROUGH HOLE

ORIENTATION  
-RA: RIGHT ANGLE

DO NOT  
SCALE FROM  
THIS PRINT

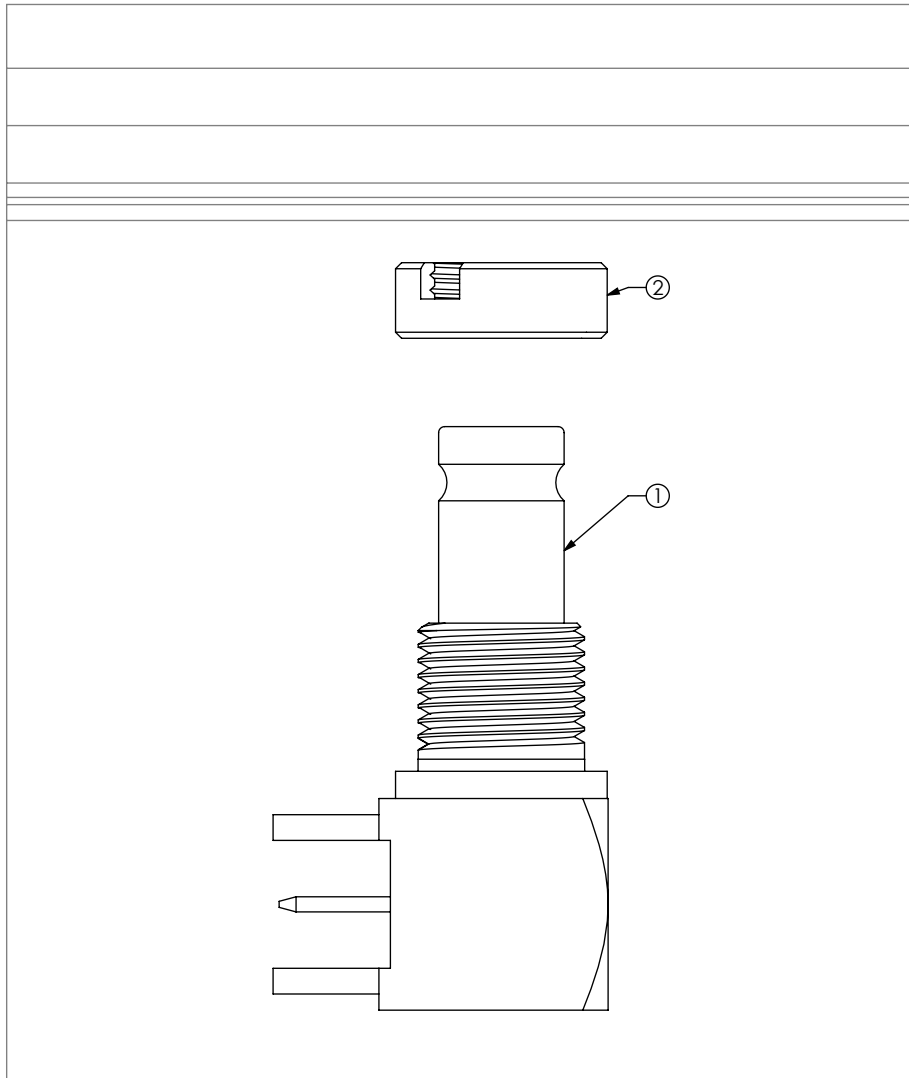
PLATING SPECIFICATION  
-HG: 30µ" GOLD CENTER CONTACT,  
10µ" GOLD OUTER CONTACT  
100µ" Ni ON BODY  
-HF: 30µ" GOLD CENTER CONTACT,  
3µ" GOLD OUTER CONTACT  
100µ" Ni ON BODY  
-GF: 10µ" GOLD CENTER CONTACT,  
3µ" GOLD OUTER CONTACT  
100µ" Ni ON BODY  
(SEE TABLE 1)

TABLE 1				
ITEM	COMPONENT	-HG	-HF	-GF
1	SUB ASSEMBLY	SUB-DIN7A-J-P-HG-RA-BH1	SUB-DIN7A-J-P-HF-RA-BH1	SUB-DIN7A-J-P-GF-RA-BH1
2	NUT	DINA-NUT-001-N		



- NOTES:
- ⊗ REPRESENTS A CRITICAL DIMENSION.
  - DELETED.
  - DELETED.
  - DELETED.
  - PRODUCT TO BE PACKAGED PER PRECISION RF SECTION OF PACKAGING MANUAL.
  - DELETED.
  - NUT TO BE PACKAGED SEPARATELY.

<p>UNLESS OTHERWISE SPECIFIED DIMENSIONS ARE IN MILLIMETERS</p> <p>TOLERANCES ARE:</p> <p>DECIMALS      ANGLES</p> <p>.X: <math>\pm 0.3 [.01]</math>      5°</p> <p>.XX: <math>\pm 0.13 [.005]</math></p> <p>.XXX: <math>\pm 0.051 [.0020]</math></p>	<p>PROPRIETARY NOTE</p> <p>THIS DOCUMENT CONTAINS INFORMATION CONFIDENTIAL AND PROPRIETARY TO SAMTEC, INC. AND SHALL NOT BE REPRODUCED OR TRANSFERRED TO OTHER DOCUMENTS OR DISCLOSED TO OTHERS OR USED FOR ANY PURPOSE OTHER THAN THAT WHICH IT WAS OBTAINED WITHOUT THE EXPRESSED WRITTEN CONSENT OF SAMTEC, INC.</p>	<p>520 PARK EAST BLVD, NEW ALBANY, IN 47150 PHONE: 812-944-6733      FAX: 812-948-5047 e-Mail: info@SAMTEC.com      code: 55322</p>



DIN7A-J-P-XX-RA-BH1 SHOWN

<p><b>PROPRIETARY NOTE</b></p> <p>THIS DOCUMENT CONTAINS CONFIDENTIAL AND PROPRIETARY INFORMATION AND ALL DESIGN, MANUFACTURING, REPRODUCTION, USE, PATENT RIGHTS AND SALES RIGHTS ARE EXPRESSLY RESERVED BY SAMTEC, INC. THIS DOCUMENT SHALL NOT BE DISCLOSED, IN WHOLE OR PART, TO ANY UNAUTHORIZED PERSON OR ENTITY NOR REPRODUCED, TRANSFERRED OR INCORPORATED IN ANY OTHER PROJECT IN ANY MANNER WITHOUT THE EXPRESS WRITTEN CONSENT OF SAMTEC, INC.</p>	 <p>520 PARK EAST BLVD., NEW ALBANY, IN 47150          PHONE: 812-944-6733 FAX: 812-948-5047          e-Mail: info@SAMTEC.com code: 55322</p>
<p>DO NOT SCALE DRAWING SHEET SCALE: 2:1          INSULATOR:          CONTACT OR TERMINAL:          SHIELD: PHOS BRONZE          PLATING:          CONTACT AREA: .000010 REF GOLD          REMAINDER: .000200 REF TIN</p>	<p>DESCRIPTION:          TRUE 75 OHM RIGHT ANGLE JACK ASSEMBLY          DWG. NO.  <b>DIN7A-J-P-XX-RA-BH1-X</b>          BY: talonz 03/19/2010 SHEET 2 OF 2</p>