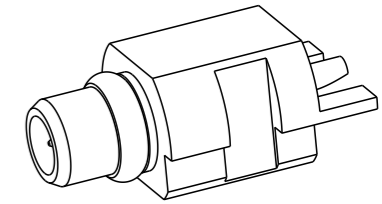
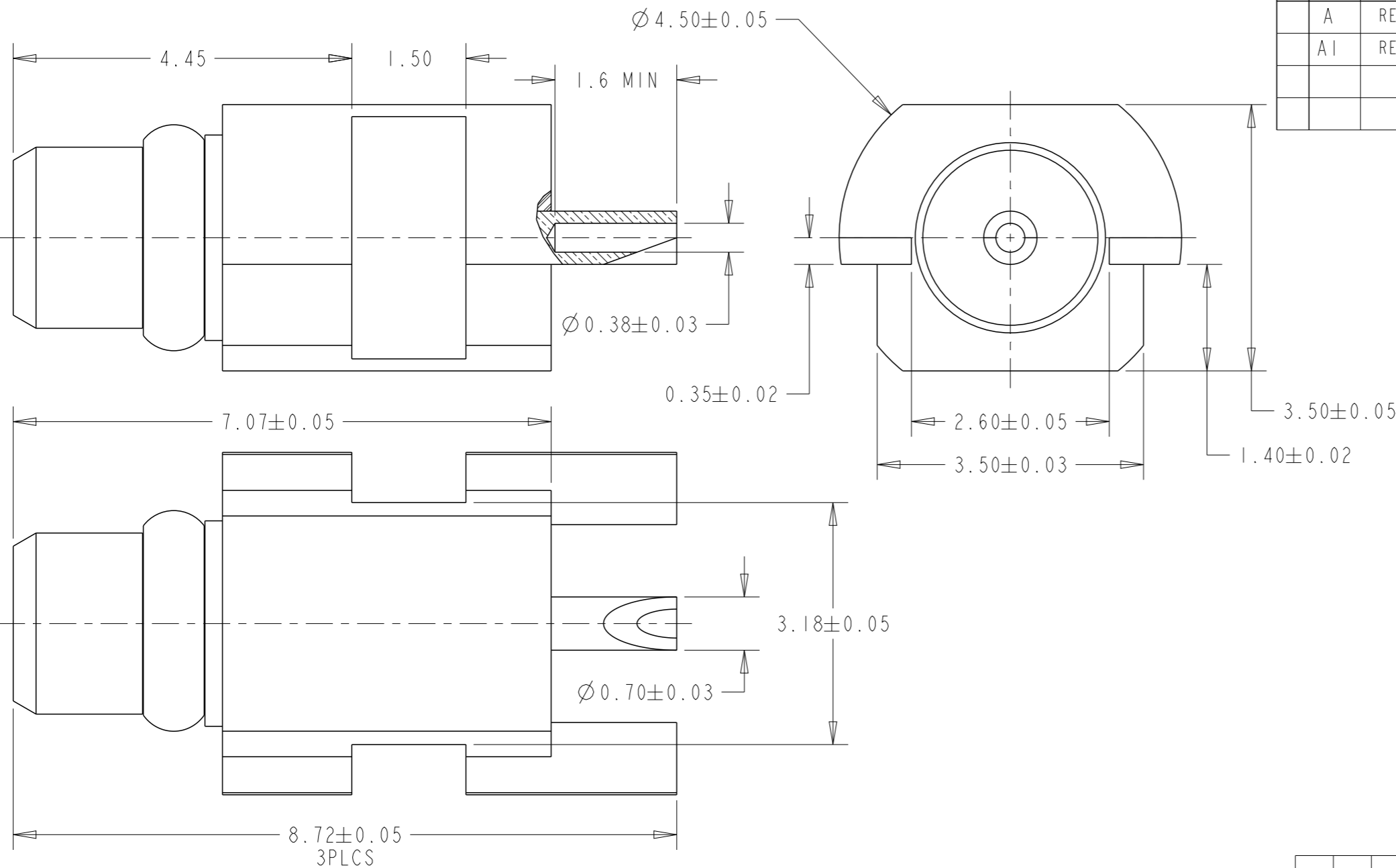


P	LTR	DESCRIPTION	DATE	DWN	APVD
	A	REVISED PER ECN-22-158649	13JUN2022	RZ	WK
	AI	REVISED PER ECR-23-166709	28FEB2023	ED	WH



QTY REQD PER ASSY	REVISION OF EACH ASSY NO(WHEN BLANK, USE DWG REVISION)	PARTS LIST
	I	Au 0.03um MIN BeCu C-RING 4
	I	/ PTFE INSULATOR 3
	I	Au 0.03um MIN BRASS CENTER CONTACT 2
	I	Au 0.03um MIN BRASS BODY 1
	-I	PLATING MATERIAL DESCRIPTION ITEM

ELECTRICAL	MECHANICAL	ENVIRONMENTAL
IMPEDANCE (OHM) 50 FREQUENCY RANGE (GHZ) DC TO 6 VOLTAGE RATING (PEAK) SEA LEVEL 170 VRMS INSULATION RESISTANCE (MIN) 1000 MOHMS CONTACT RESISTANCE (MILLIOHMS MAX) CENTER CONTACT 5.0 OUTER CONTACT 2.0 DIELECTRIC WITHSTAND VOLTAGE (MIN) 500 VRMS INSERTION LOSS 0.06*SQRT(F) dB VSWR 1.25 Max RF LEAKAGE -60dB Min	INTERFACE DIMENSION MIL-STD-348B BS 122340: 2002 FORCE TO ENGAGE AND DISENGAGE ENGAGE 15N MAX DISENGAGE 6N MIN CENTER CONTACT CAPTIVATION AXIAL(N) 10 RADIAL(N.m) N/A CABLE RETENTION AXIAL(N) N/A RADIAL(N.m) N/A MATING CYCLES 500 CYCLES MIN	TEMPERATURE RANGE -55°C TO +155°C THERMAL SHOCK MIL-STD-202, METH.107, COND.B CORROSION MIL-STD-202, METH.101, COND.B VIBRATION MIL-STD-202, METH.204, COND.B SHOCK MIL-STD-202, METH.213, COND.A MOISTURE RESISTANCE MIL-STD-202, METH.106. ROSH COMPLIANT

THIS DRAWING IS A CONTROLLED DOCUMENT.

DIMENSIONS:	TOLERANCES UNLESS OTHERWISE SPECIFIED:
mm	0 PLC ±0.5
	1 PLC ±0.13
	2 PLC ±0.013
	3 PLC ±0.0001
	4 PLC ±5
	ANGLES ±5
MATERIAL	FINISH
-	-
-	-

DWN RANDY Z 10SEP2019	TE Connectivity NAME MMCX PLUG ST FLUSH EDGE MOUNT RECEPTACLE PRODUCT SPEC - APPLICATION SPEC - WEIGHT -		
CHK ERIC D 10SEP2019			
APVD WENKE H 10SEP2019			
PRODUCT SPEC -			
SIZE A3	CAGE CODE 00779	DRAWING NO C-2409307	RESTRICTED TO -
CUSTOMER DRAWING		SCALE 15:1	SHEET 1 OF 1 REV AI