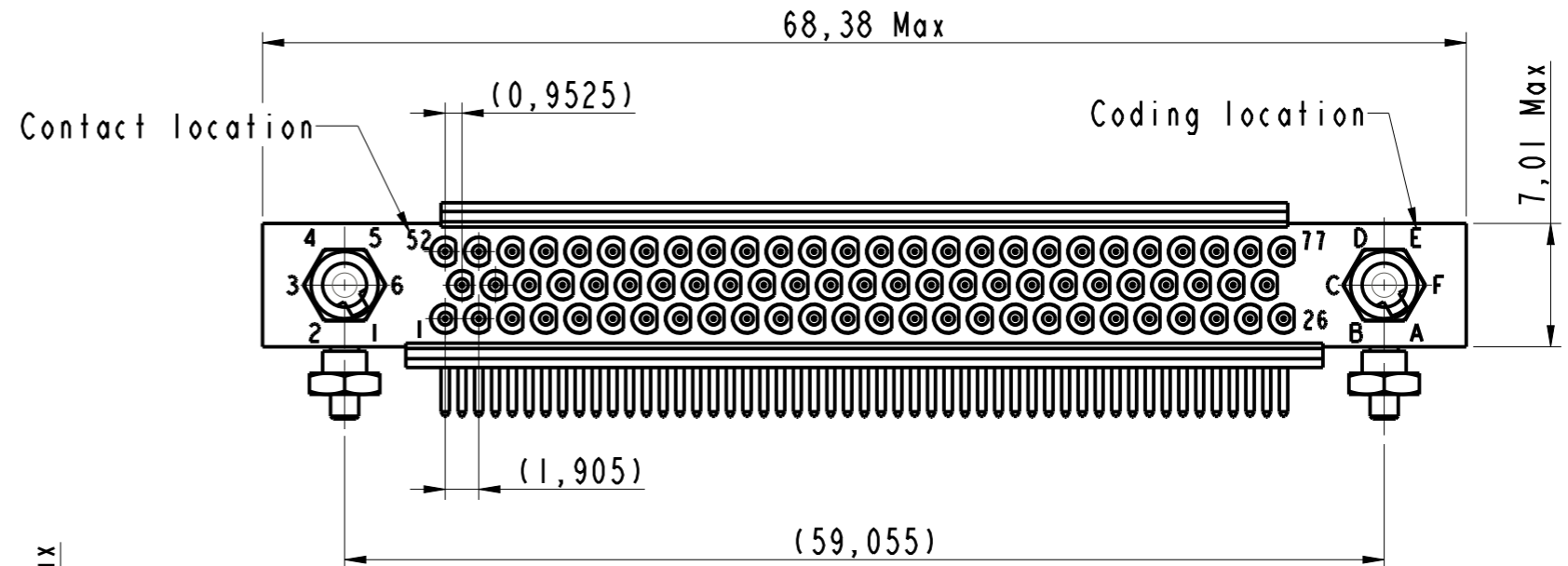
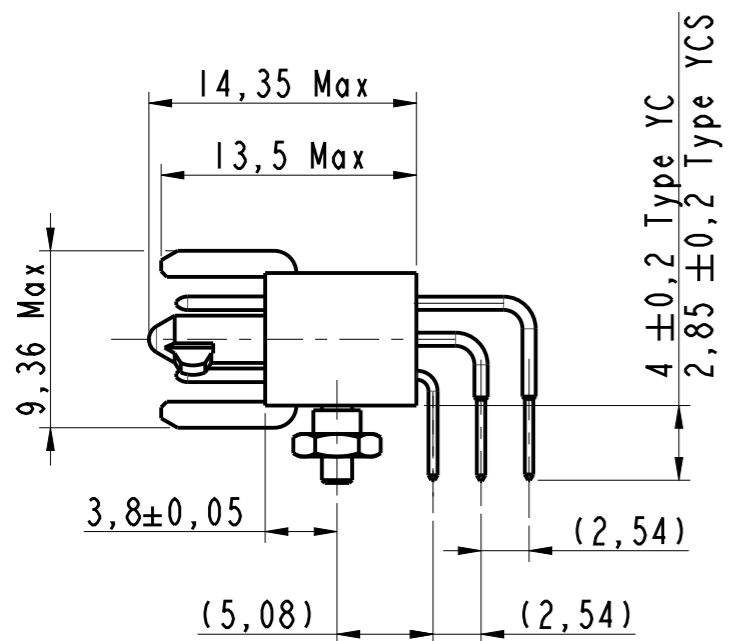
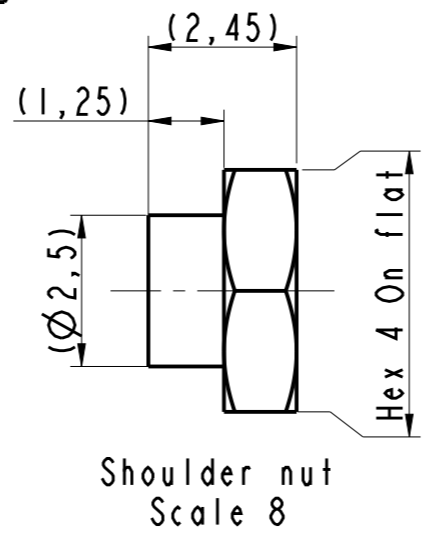
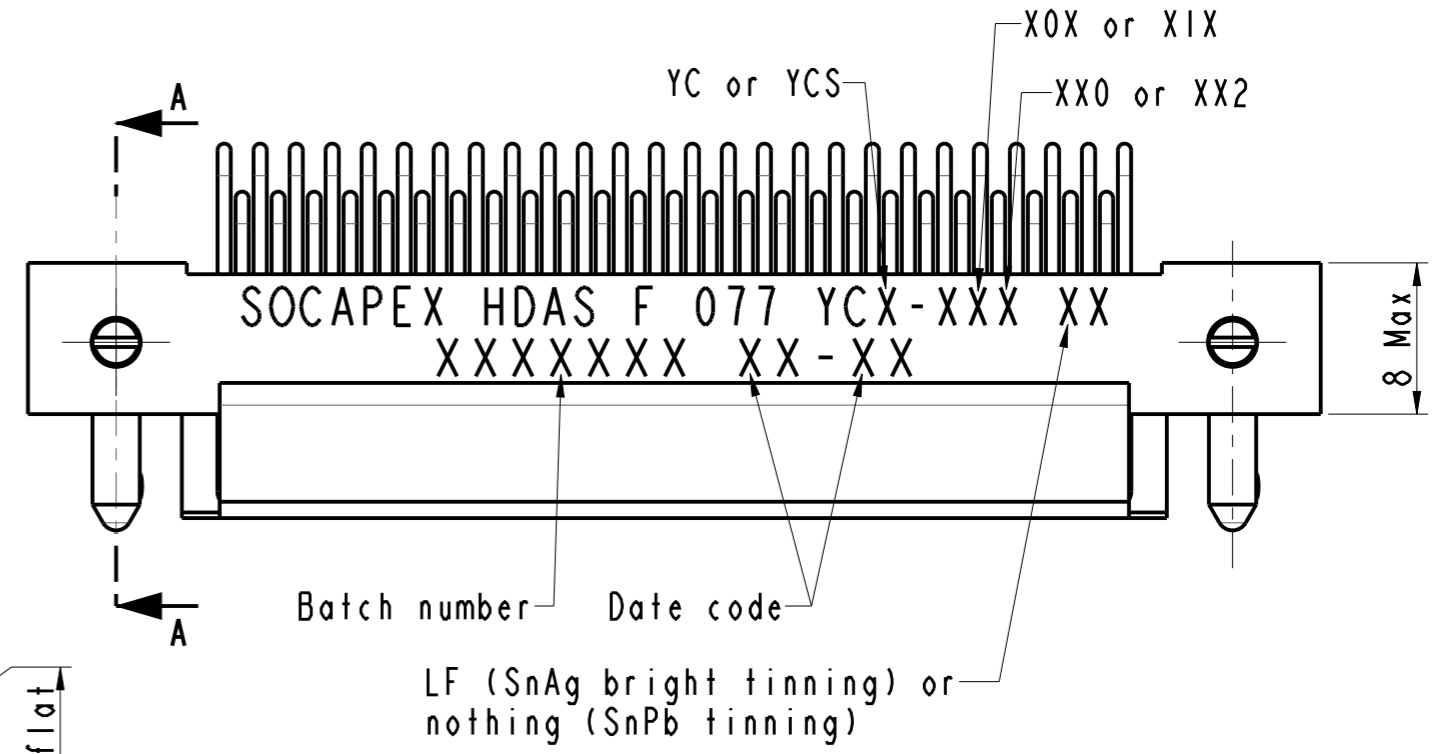
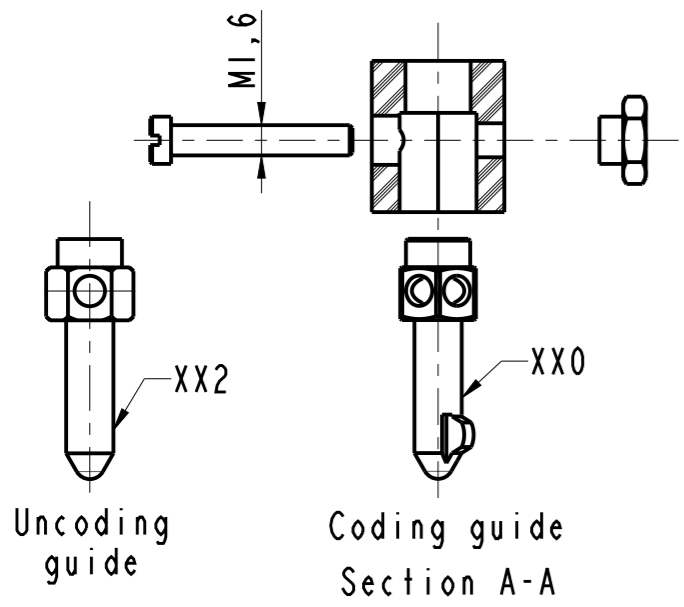
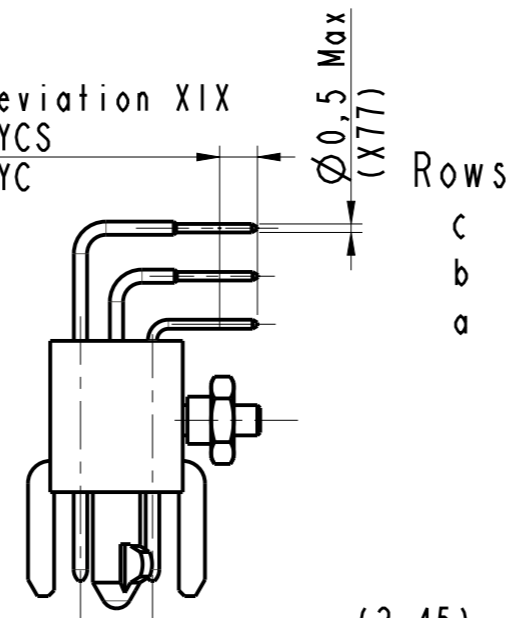


IN THE CONSTANT PURPOSE OF IMPROVING ITS PRODUCTS, Amphenol Socapex RESERVES THE RIGHT TO MODIFY ANY DIMENSION OR CHARACTERISTICS.  
FM.NPD.0036.THYZE.PUNE rev C



Tinning: deviation XIX  
2 Min For YCS  
3 Min for YC

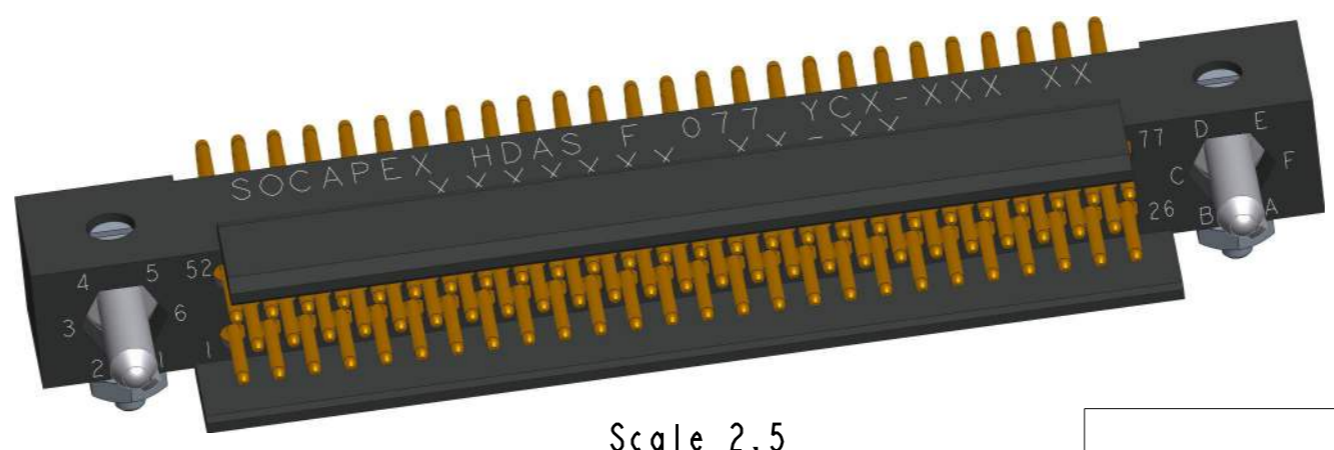
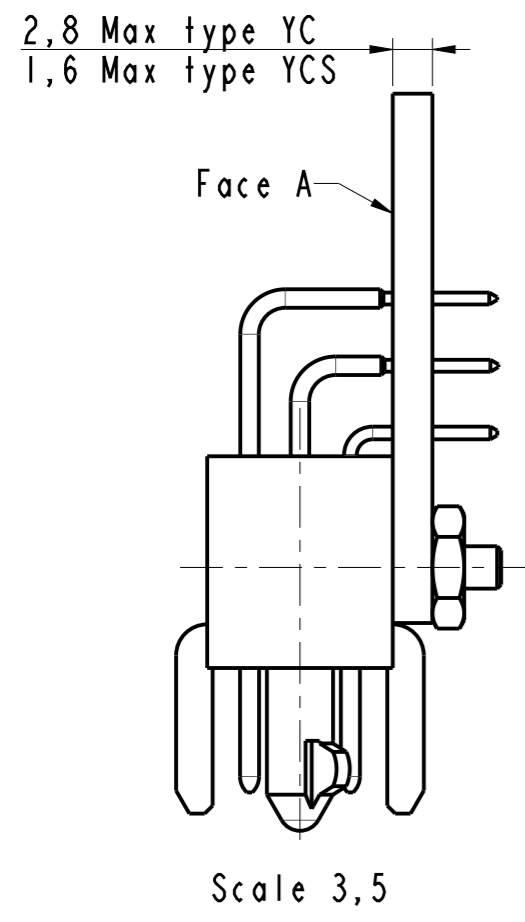
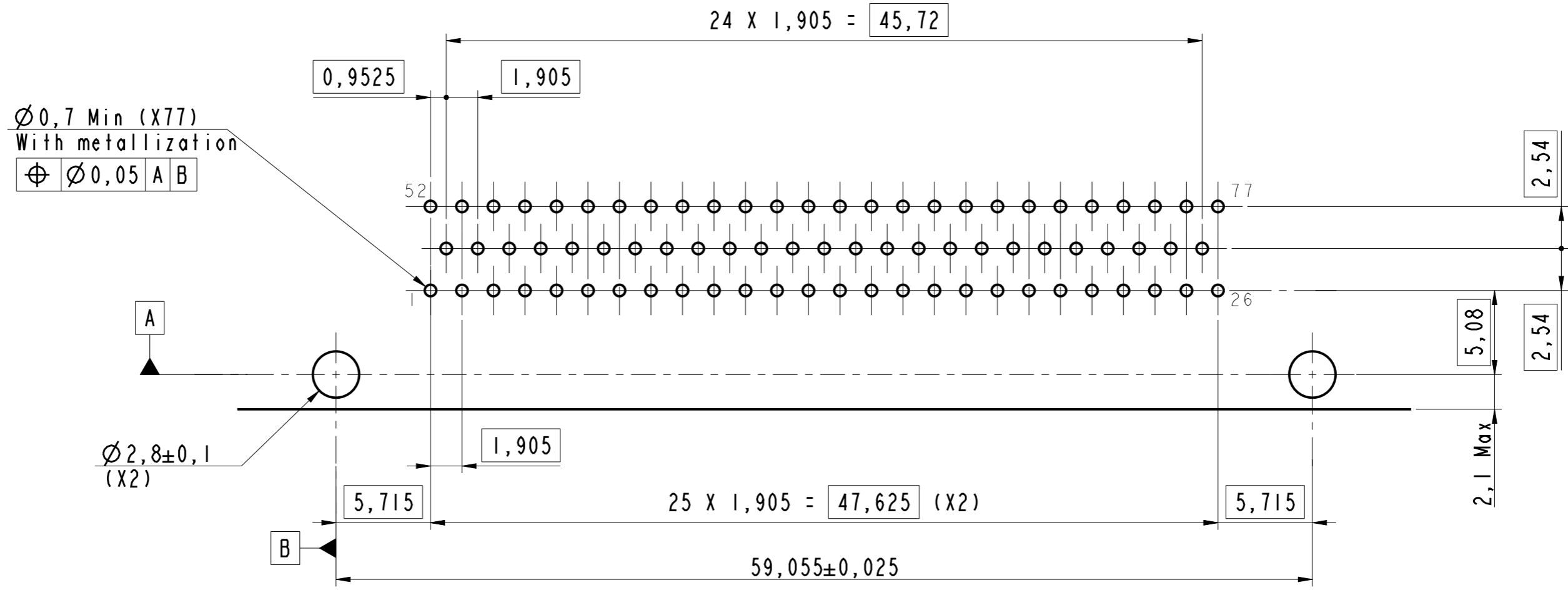


- Notes:
- Part: HDAS F 077 YCX-XXX XX
  - External dimensions for a male plug with 77 signal contacts type YCX
  - Connector delivered with fittings not assembled, coupling torque : 0,15 Nm
  - Standard OXX : Nickel plated over brass fittings.  
Deviation IXX : Passivated stainless steel fittings.
  - Standard XOX : Contacts gold plated (RoHS)  
Deviation XIX : Contacts tail Hot dip tinned SnPb (non RoHS) or SnAg (RoHS)

# HDAS F 077 YCX-XXX XX

DRAWN BY : S Satpute		UPDATED BY : S Satpute		LAST APPROVED BY : T Carrier	
ALL DIMENSIONS ARE IN MM	AMPHENOL SOCAPEX			ORIGINAL DRAWING DATE : 03/09/2019	CONFIGURATION DATA ARE AVAILABLE IN PDM
				SCALE : 2,5	REV : D
B.P. 29 74311 THYZE CEDEX				169-PLC-1324-00	

# PCB LAYOUT FACE A



## HDAS F 077 YCX-XXX XX

DRAWN BY : S Satpute		UPDATED BY : S Satpute		LAST APPROVED BY : T Carrier	
ALL DIMENSIONS ARE IN MM		AMPHENOL SOCAPEX		ORIGINAL DRAWING DATE : 03/09/2019	CONFIGURATION DATA ARE AVAILABLE IN PDM
SCALE : 3,5				REV : D	PAGE : 2/2
		B.P. 29 74311 THYEZ CEDEX		169-PLC-1324-00	

IN THE CONSTANT PURPOSE OF IMPROVING ITS PRODUCTS, Amphenol Socapex RESERVES THE RIGHT TO MODIFY ANY DIMENSION OR CHARACTERISTICS. FM.NPD.0036.THYEZ.PUNE rev C