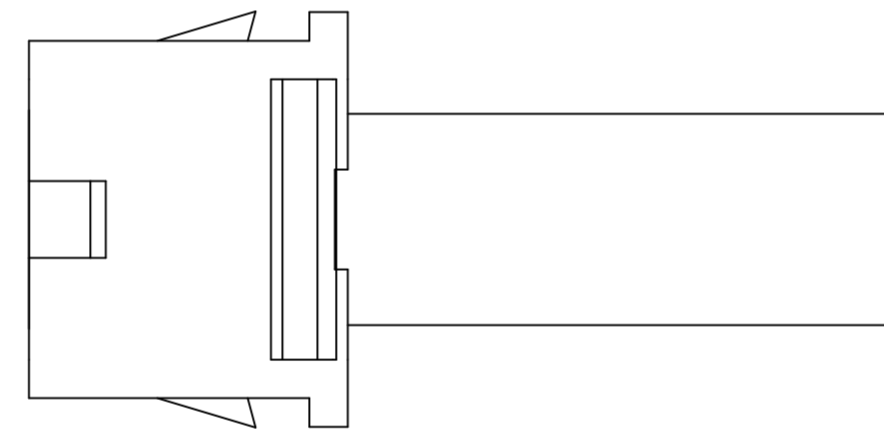
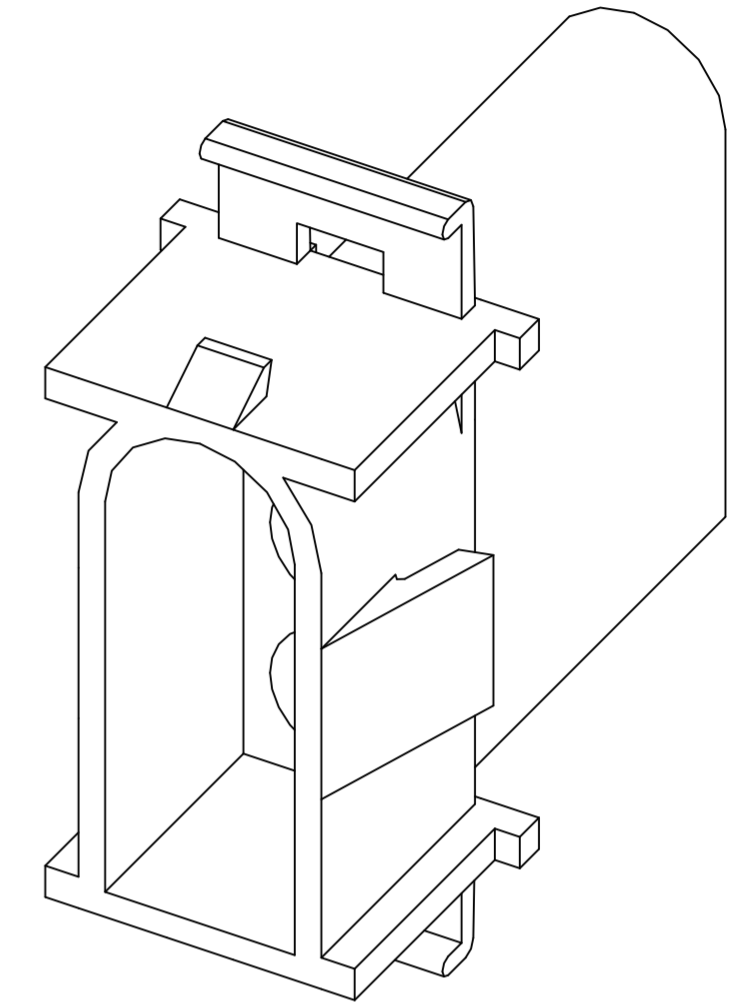
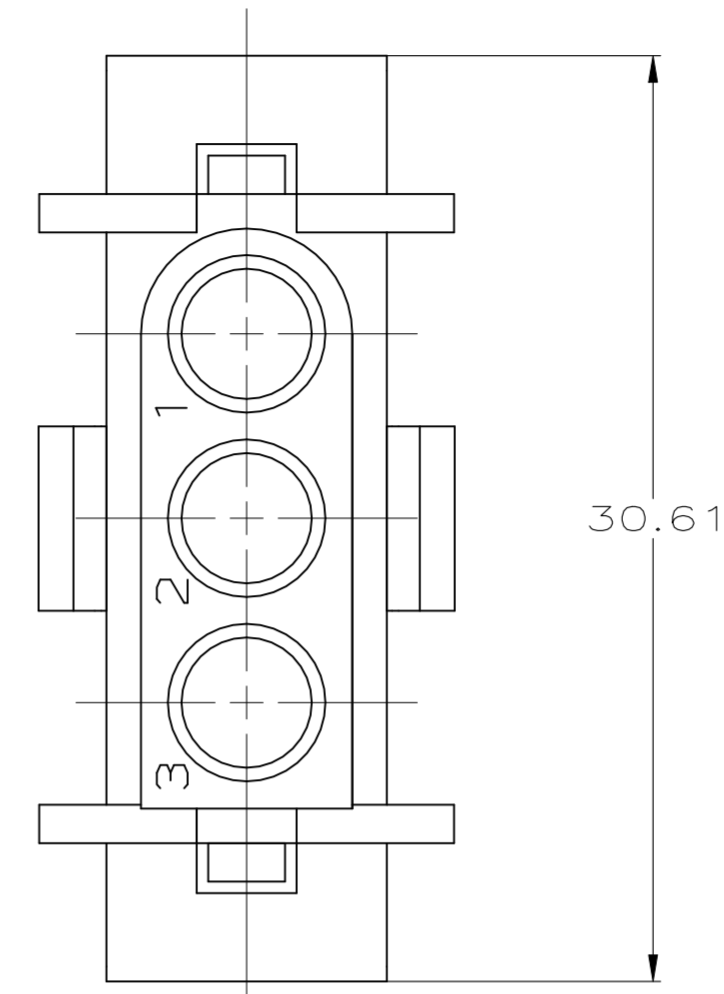
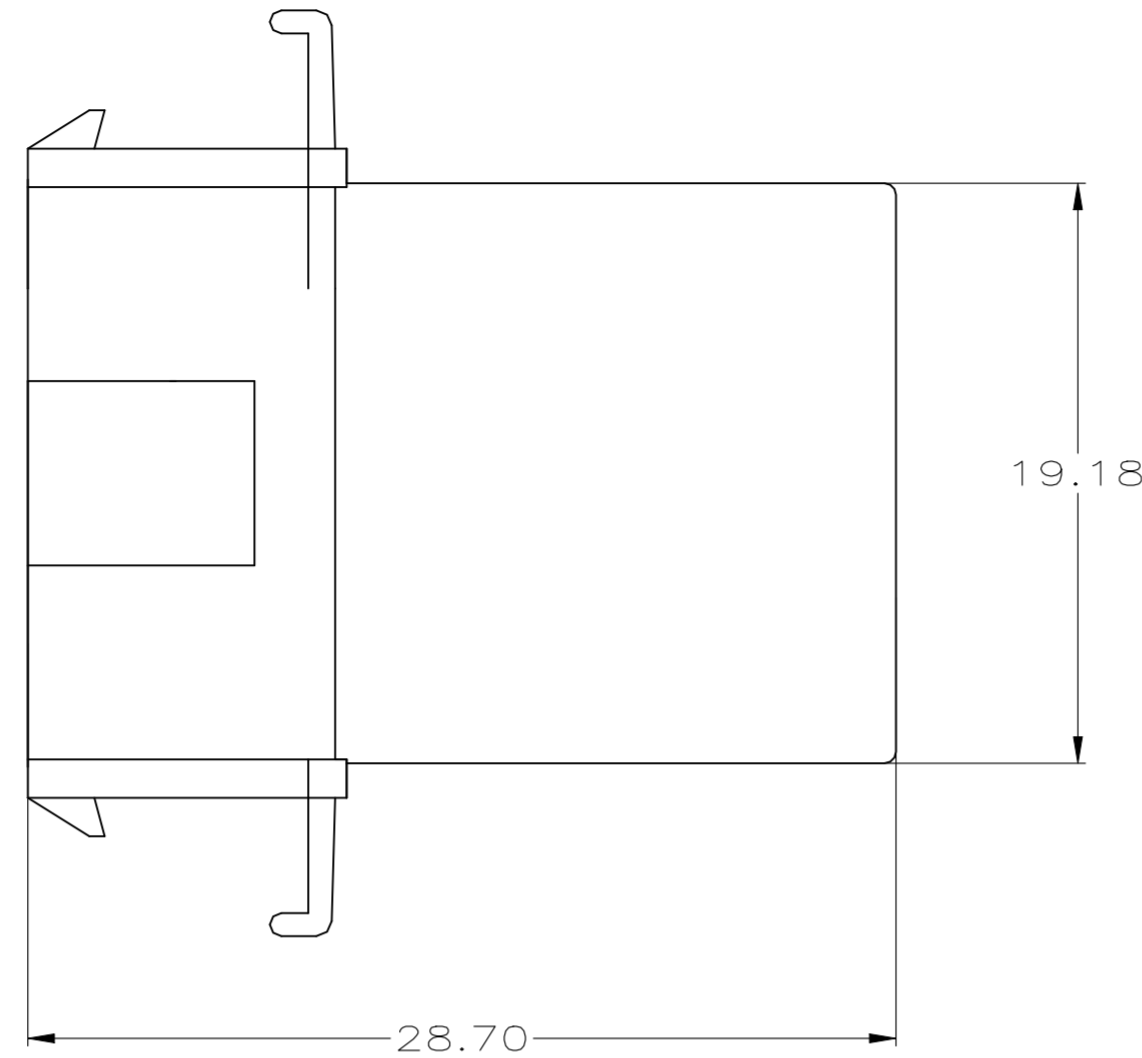
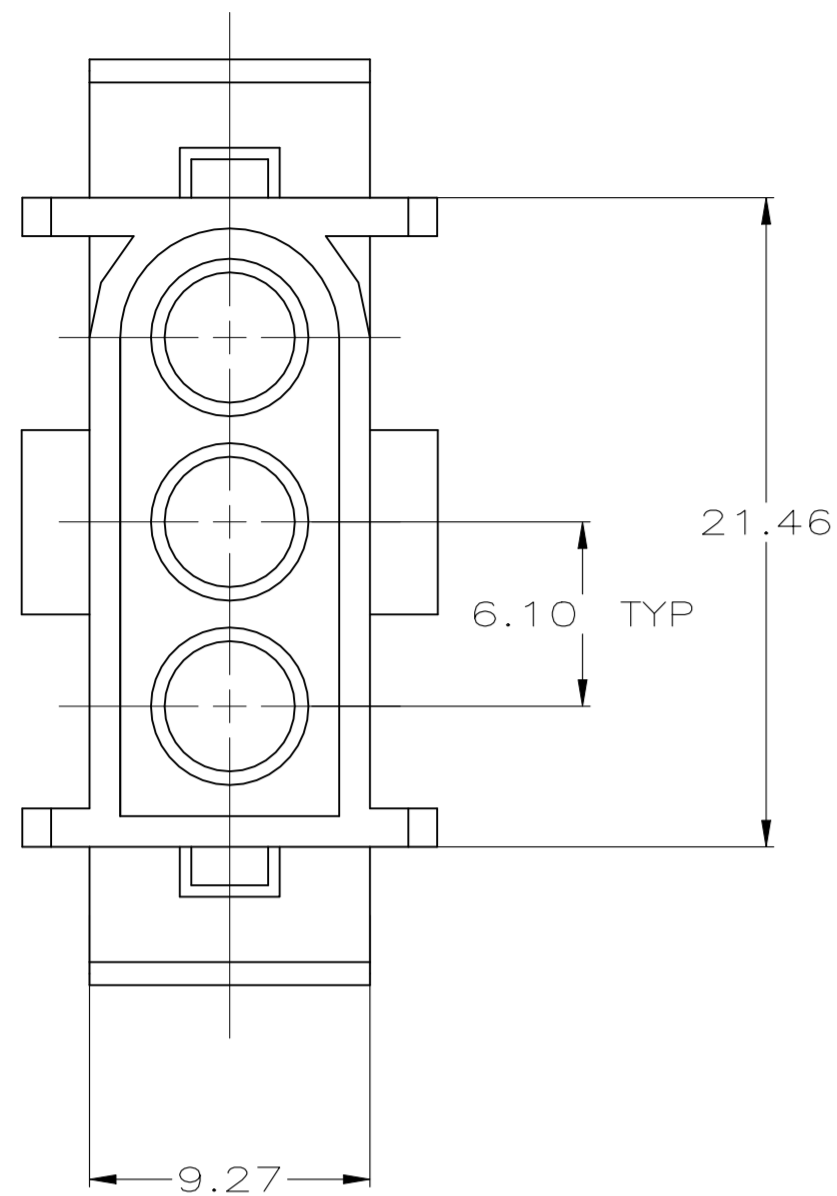
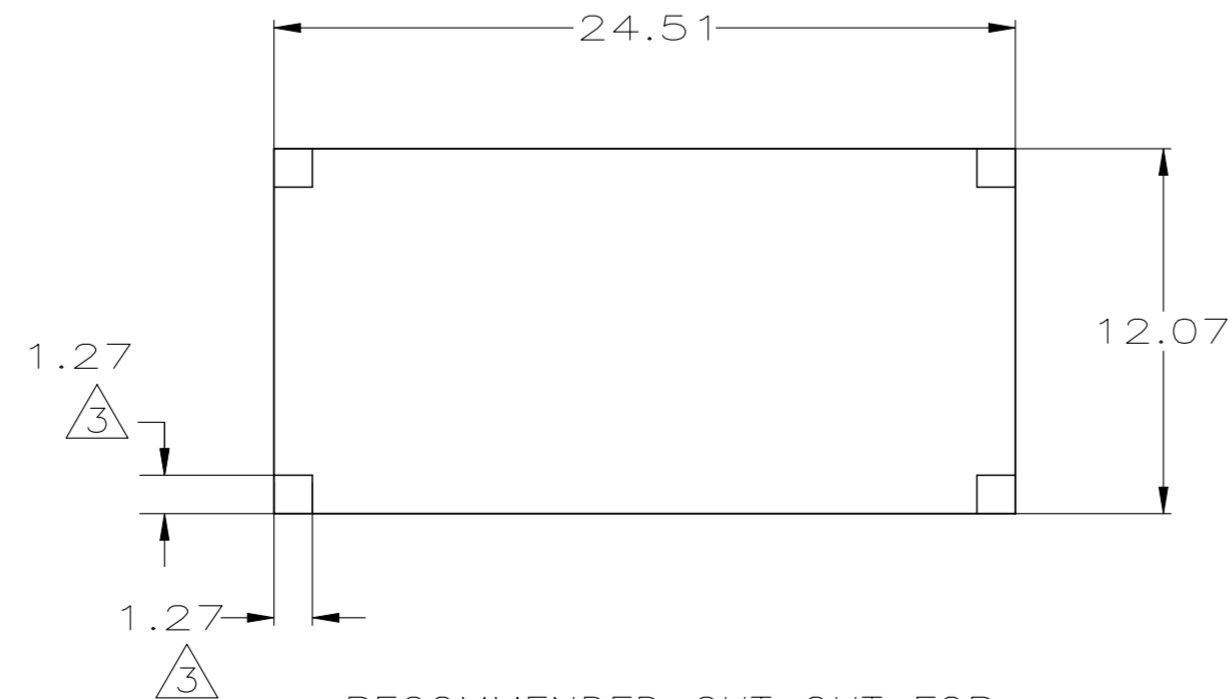


REVISIONS					
P	LTR	DESCRIPTION	DATE	DWN	APVD
F1		REVISED PER ECN-23-205457	28MAR2023	WLS	VS



- 1. TO BE USED WITH .140 SERIES PINS.
- 2. TO BE USED WITH PLUG 350346.
- 3. 1.27 x 1.27 TABS IN CORNERS OF CUT-OUT ARE OPTIONAL TO REDUCE HOUSING FLOAT IN PANEL.



RECOMMENDED CUT OUT FOR 0.76 - 1.65 THICK PANEL

# METRIC

3.56	.140	21.46	.845		
1.65	.065	19.18	.755		
1.27	.050	12.07	.475	30.61	1.205
0.76	.030	9.27	.365	28.70	1.130
0.13	.005	6.10	.240	24.51	.965
MM	IN	MM	IN	MM	IN

CONVERSION TABLE

THIS DRAWING IS A CONTROLLED DOCUMENT.		DWN J. HUFFMAN 8-14-95	NATURAL	NYLON, UL94-V2	1-350347-0
DIMENSIONS: mm		CHK R. SWING 8-14-95	COLOR	MATERIAL	PART NUMBER
TOLERANCES UNLESS OTHERWISE SPECIFIED: 0 PLC ± - 1 PLC ± - 2 PLC ± 0.13 3 PLC ± - 4 PLC ± - ANGLES ± 0°30'		APVD C. MARTIN 8-15-95			
MATERIAL SEE TABLE		FINISH -	NAME CAP, 3 CIRCUIT, .140 MATE-N-LOK TM		
WEIGHT -		SIZE A2	CAGE CODE 00779	DRAWING NO C=350347	RESTRICTED TO -
CUSTOMER DRAWING			SCALE 4:1	SHEET 1 of 1	REV F1