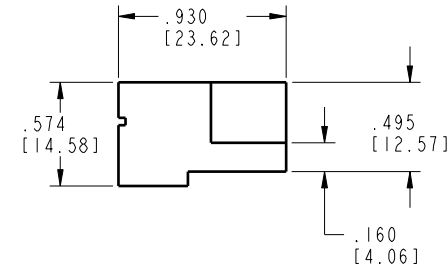
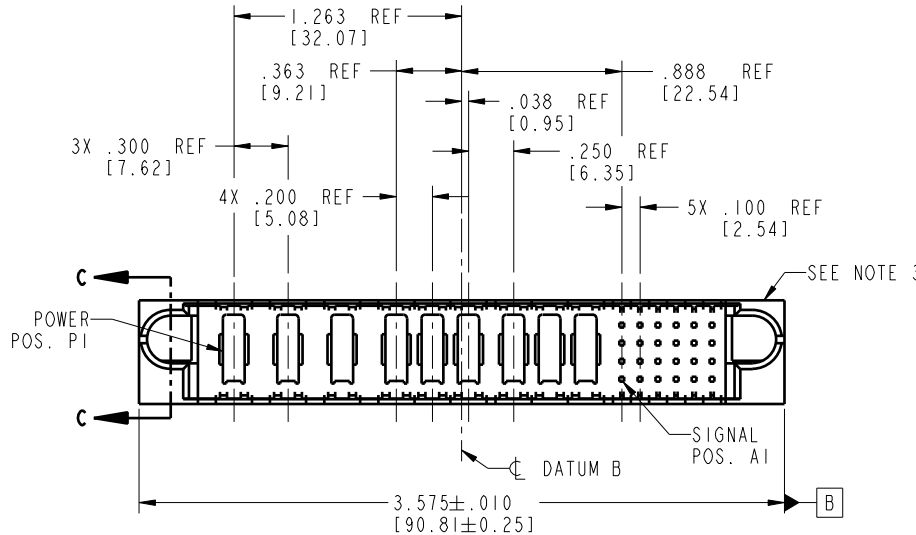
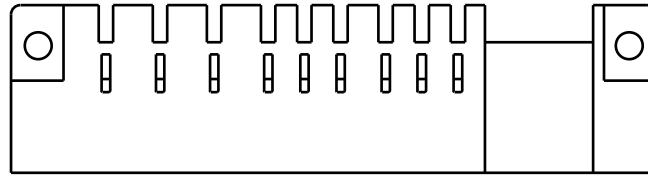


Tous droits strictement réservés. Reproduction ou communication o des liers interdite sous quelque forme que ce soit sans autorisation écrite du propriétaire. Propriété de c FCI. Droits de reproduction FCI.

All rights strictly reserved. Reproduction or issue to third parties in any form without is not permitted without written authority from the proprietor. Property of FCI. Copyright FCI.

PRODUCT NO.	ROWS	POWER									SIGNAL							
		E1	P1	P2	P3	P4	P5	P6	P7	P8	P9	1	2	3	4	5	6	E2
51939-141LF	0 A		X	X	X	X	X	X	X	X	X	X	X	X	X	X	X	X



CODE	DIM "M" MATING LENGTH	CONTACT TYPE
X	OMITTED	OMITTED

mat'l code SEE NOTE 2				tolerances unless otherwise specified		CUSTOMER		FCI www.fciconnect.com	
lir	ecn no.	dr	date	linear	projection	COPY			
A	V04-1038	TAB	10/20/04	.XX±.01/0.X±0.3		title 9P + 24S			
B	DG06-0013	RYAN	01/12/06	.XXX±.005/0.XX±0.13		RIGHT ANGLE HEADER, NO CONTACTS			
				.XXX±.002/0.XXX±0.051		INCH/MM		product family PwrBlade code	
				angles 0°±2°		scale 1:1		size 213	
				dr T. BRUNGARD 10/20/04				dwg no 51939-141	
				engr M. GRAY 10/20/04				sheet 1 of 3	
				chr M. GRAY 10/20/04					
				opod M. GRAY 10/20/04					
sheet index	revision	B	B	B					
	sheet	1	2	3					

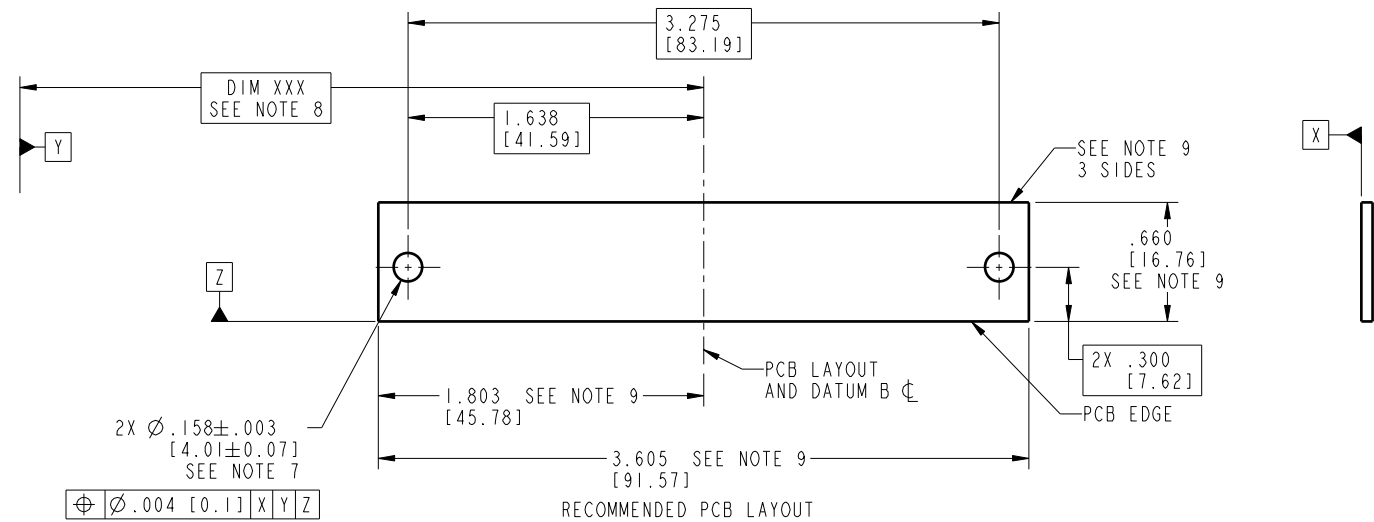
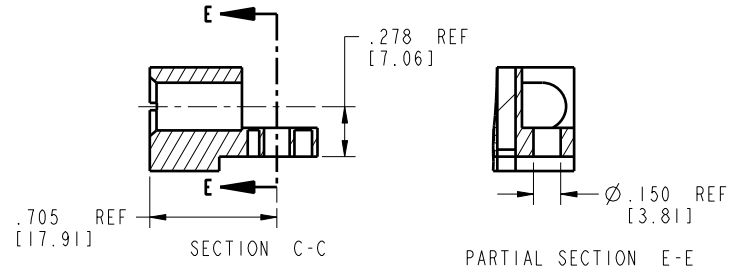
code code 22526

Pro/E

Tous droits strictement réservés. Reproduction ou communication à des tiers interdite sans quelque forme que ce soit sans autorisation écrite du propriétaire. Propriété de c FCI. Droits de reproduction FCI.

All rights strictly reserved. Reproduction or issue to third parties in any form whatsoever is not permitted without written authority from the proprietor. Property of FCI. Copyright FCI.

PRODUCT NUMBER
51939-141LF



⊕ Ø.004 [0.1] X Y Z

mat'l code SEE NOTE 2				tolerances unless otherwise specified		CUSTOMER		 www.fciconnect.com			
lir	ecn no.	dr	date	linear	.XX±.01/0.X±0.3	projection		title 9P + 24S			
B					.XXX±.005/0.XX±0.13			RIGHT ANGLE HEADER, NO CONTACTS			
					.XXX±.002/0.XXX±0.051			product family PwrBlade		code 213	
					angles 0°±2°			INCH/MM		size A	dwg no 51939-141
					dr T. BRUNGARD 10/20/04			scale 1:1		sheet 2 of 3	
				engr M. GRAY 10/20/04							
				chr M. GRAY 10/20/04							
				appd M. GRAY 10/20/04							
sheet index	revision sheet										

code code 22526

Pro/E

Tous droits strictement réservés. Reproduction ou communication à des tiers interdite sans quelque forme que ce soit sans autorisation écrite du propriétaire. Propriété de c FCI. Droits de reproduction FCI.



All rights strictly reserved. Reproduction or issue to third parties in any form whatsoever is not permitted without written authority from the proprietor. Property of FCI. Copyright FCI.

1 | 2

3 |

4

PRODUCT NUMBER
51939-141LF

NOTES:

1. DIMENSIONS AND TOLERANCES ARE IN ACCORDANCE WITH ASME Y14.5M, 1994 UNLESS OTHERWISE SPECIFIED.

CONNECTOR NOTES:

- 2. HOUSING MATERIAL: UL 94 V-0 GLASS FILLED HIGH-TEMP THERMOPLASTIC
POWER CONTACT MATERIAL: COPPER ALLOY
SIGNAL PIN MATERIAL: COPPER ALLOY
- 3. MANUFACTURER'S NAME, P/N, AND DATE CODE TO APPEAR ON THIS SURFACE.
- 4. PRODUCT SPECIFICATION GS-12-149.
APPLICATION SPECIFICATION BUS-20-067.
- 5. PACKAGED IN TRAYS.

PCB NOTES:

- 6. ALL HOLE DIAMETERS ARE FINISHED HOLE SIZE.
- 7. MOUNTING HOLES, WHERE APPLICABLE, ARE UNPLATED.
- 8. "DIM XXX" TO BE DETERMINED BY THE CUSTOMER.
- 9. CONNECTOR KEEP-OUT ZONE.

mat'l code				SEE NOTE 2		tolerances unless otherwise specified		CUSTOMER		 www.fciconnect.com	
lir	ecr no.	dr	date	linear	.XX±.01/0.X±0.3		projection	COPY		title	
B					.XXX±.005/0.XX±0.13					9P + 24S	
				angles	.XXX±.002/0.XXX±0.051		INCH/MM scale 1:1	product family		RIGHT ANGLE HEADER, NO CONTACTS	
				dr	0° ± 2°			PwrBlade		code	
				eng	T. BRUNGARD 10/20/04			size		213	
				chr	M. GRAY 10/20/04			dwg no		sheet	
				opod	M. GRAY 10/20/04			A		3 of 3	
sheet index	revision sheet										

A

A

B

B

1 | 2

Pro/E

3 |

code code 22526

4