

4

3

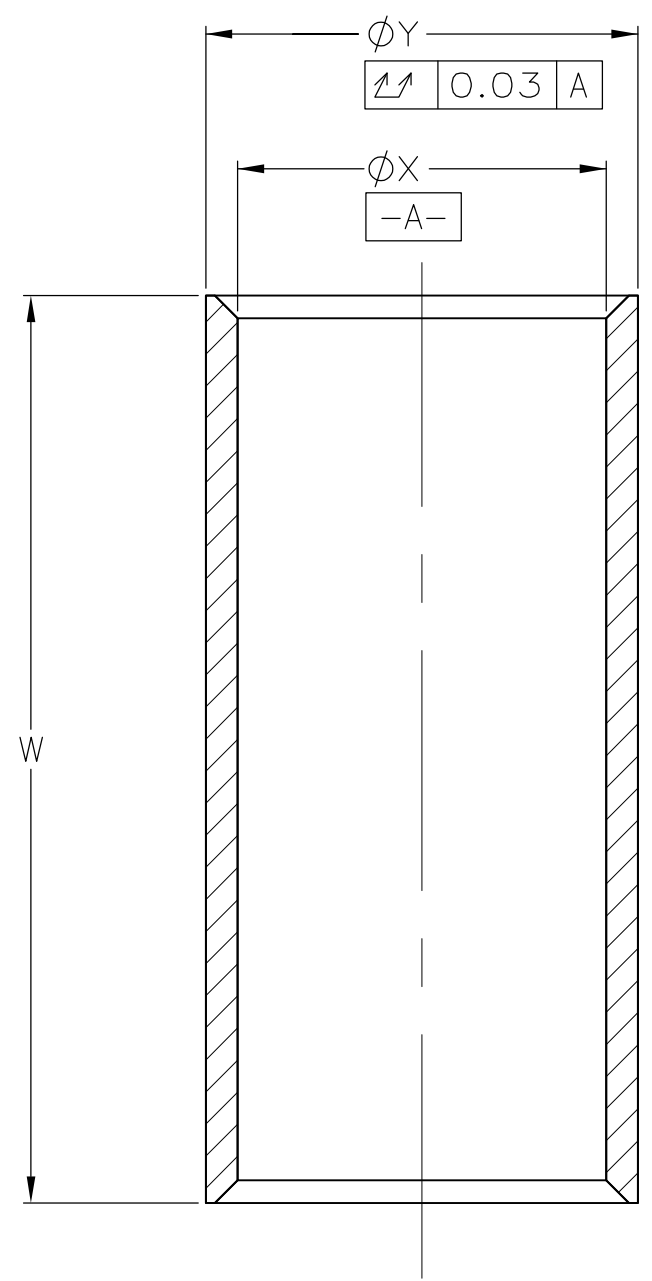
2

1

THIS DRAWING IS UNPUBLISHED. RELEASED FOR PUBLICATION
 © COPYRIGHT - TE Connectivity ALL RIGHTS RESERVED.

REVISIONS				
P	LTR	DESCRIPTION	DATE	APVD
D1		REVISED PER ECR-17-009545	08AUG2017	AS RS

D
C
B
A



	6.1±0.08	5.2±0.08	8.0±0.08	1-148260-3
	6.2±0.08	5.3±0.08	8.0±0.08	1-148260-1
	3.81±0.08	3.25±0.08	12.0±0.08	148260-9
	6.1±0.08	5.45±0.08	8.0±0.08	148260-7
OBSOLETE	4.57±0.08	3.63±0.08	8.0±0.08	148260-5
	3.81±0.08	3.25±0.08	8.0±0.08	148260-3
	Ø Y	Ø X	W	PART NUMBER

THIS DRAWING IS A CONTROLLED DOCUMENT.		DWN M. OBRINE 12AUG98	STE TE Connectivity		
DIMENSIONS: mm		CHK K. WEIDNER 12AUG98			
TOLERANCES UNLESS OTHERWISE SPECIFIED:		APVD K. WEIDNER 12AUG98	NAME FERRULE, COAX		
		PRODUCT SPEC -	-		
0 PLC ± - 1 PLC ± - 2 PLC ± - 3 PLC ± - 4 PLC ± - ANGLES ± -		APPLICATION SPEC -	SIZE A3	CAGE CODE 00779	DRAWING NO C-148260
MATERIAL COPPER ALLOY	FINISH TIN PLATE PER MIL-T-10727	WEIGHT 0.000000	RESTRICTED TO -		
CUSTOMER DRAWING			SCALE 15:1	SHEET 1 OF 1	REV D1