

RH-GM.B

Bent tubular handles

Aluminium and stainless steel



HANDLE SHANKS

Aluminium, epoxy resin coating, black colour.
Threaded blind holes.

TUBE

AISI 304 stainless steel, ground surface.

END CAPS

Polyamide based (PA) technopolymer, black colour.

DESIGN

The slightly bent shape of the tube provides RH-GM.B handle a modern and refined design in perfect harmony with the latest trends in industrial design.

SPECIAL EXECUTIONS ON REQUEST

Different lengths.



RH-TL.GM

Bent tubular handles

Aluminium and stainless steel



HANDLE SHANKS

Extruded aluminium, anodised in natural colour, semi-glossy finish.
Threaded blind holes.

TUBE

AISI 304 stainless steel, ground surface.

END CAPS

Stainless steel.

DESIGN

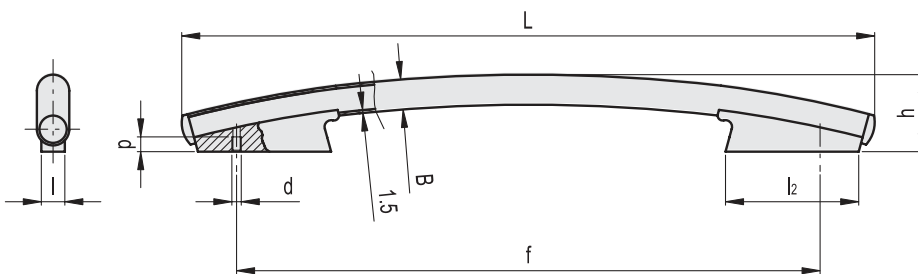
The slightly bent shape of the tube provides RH-TL.GM handle a modern and refined design in perfect harmony with the latest trends in industrial design.

SPECIAL EXECUTIONS ON REQUEST

Different lengths.



Conversion Table	
1 mm = 0.039 inch	
L	
mm	inch
613	24.13
713	28.07



Code	f	d	p	L	B	h	l	l ₂	⚖
RHGM-30.B500.33	500	M8	15	613	30	73	22	112	976
RHGM-30.B600.33	600	M8	15	713	30	80	22	136	1109



Code	f	d	p	L	B	h	l	l ₂	⚖
RHTL.GM-30.500.37	500	M8	15	613	30	73	22	112	984
RHTL.GM-30.600.37	600	M8	15	713	30	80	22	136	1169

- 1
- 2
- 3
- 4
- 5
- 6
- 7
- 8
- 9
- 10
- 11
- 12
- 13
- 14
- 15
- 16
- 17
- 18

Lift & Pull handles