

# Customer Information Sheet

DRAWING No.: M80-458XX98 SHT 2 OF 2

IF IN DOUBT - ASK

©

NOT TO SCALE

THIRD ANGLE PROJECTION

ALL DIMENSIONS IN mm

## SPECIFICATION:

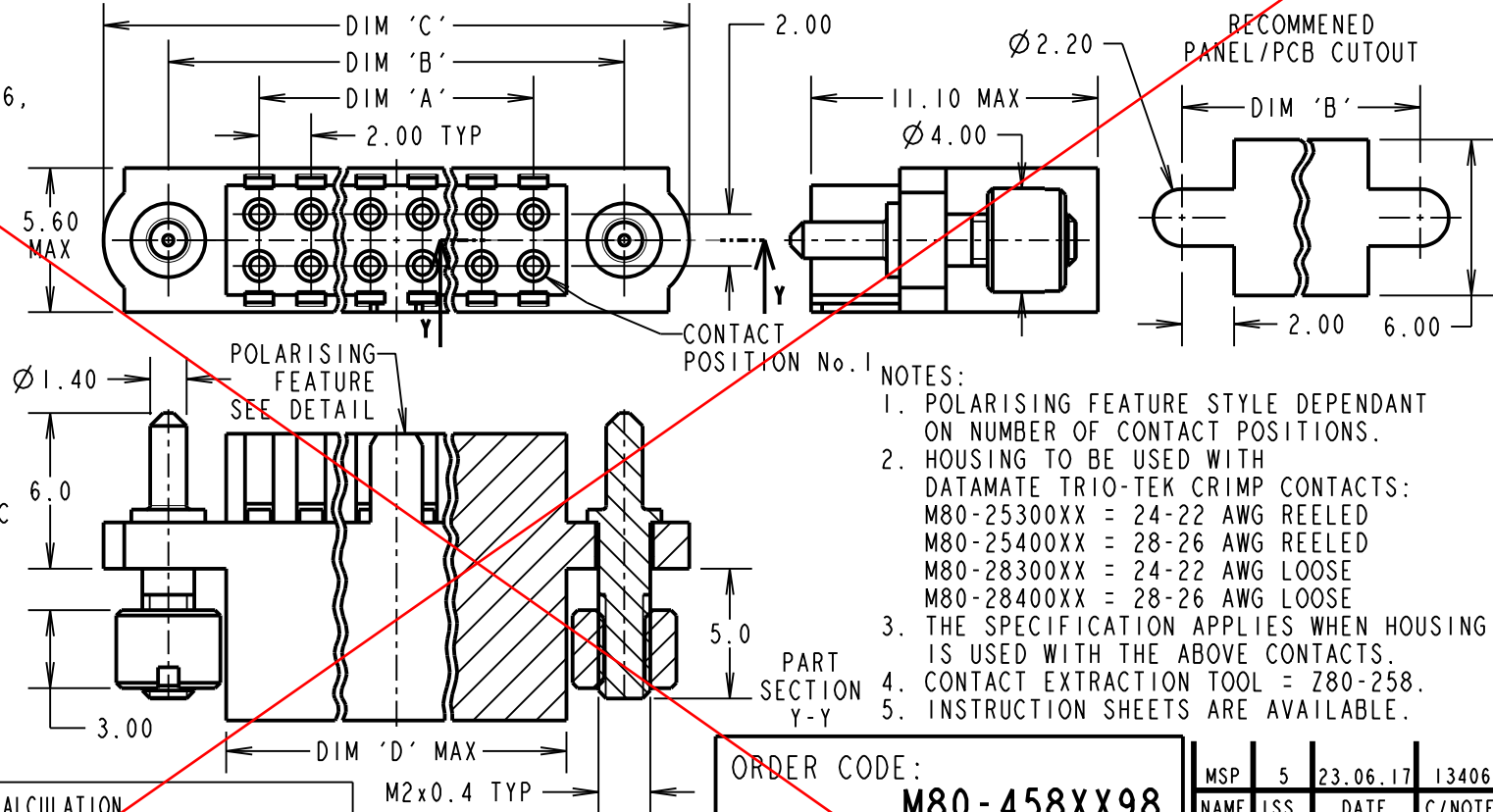
**MATERIAL:**  
 HOUSING = GLASS-FILLED POLYAMIDE 46,  
 UL94V-0, BLACK  
 GUIDE, NUT = STAINLESS STEEL

**ELECTRICAL:**  
 CURRENT RATING AT 25°C = 3.0A MAX  
 CURRENT RATING AT 85°C = 2.2A MAX  
 WORKING VOLTAGE = 800V AC/DC  
 VOLTAGE PROOF = 1200V AC/DC  
 CONTACT RESISTANCE = 25mΩ MAX  
 INSULATION RESISTANCE = 100MΩ MIN

**MECHANICAL:**  
 DURABILITY = 400 OPERATIONS  
 INSERTION FORCE = 2.0N MAX  
 WITHDRAWAL FORCE = 0.2N MIN

**ENVIRONMENTAL:**  
 TEMPERATURE RANGE = -55°C TO +125°C

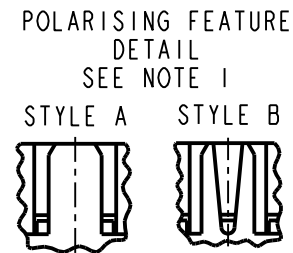
**PACKING:**  
 BAG  
 FOR COMPLETE SPECIFICATION,  
 SEE COMPONENT SPECIFICATION  
 C040XX (LATEST ISSUE)



- NOTES:
1. POLARISING FEATURE STYLE DEPENDANT ON NUMBER OF CONTACT POSITIONS.
  2. HOUSING TO BE USED WITH DATAMATE TRIO-TEK CRIMP CONTACTS:  
 M80-25300XX = 24-22 AWG REELED  
 M80-25400XX = 28-26 AWG REELED  
 M80-28300XX = 24-22 AWG LOOSE  
 M80-28400XX = 28-26 AWG LOOSE
  3. THE SPECIFICATION APPLIES WHEN HOUSING IS USED WITH THE ABOVE CONTACTS.
  4. CONTACT EXTRACTION TOOL = Z80-258.
  5. INSTRUCTION SHEETS ARE AVAILABLE.

**OBSOLETE**

DIMENSION	CALCULATION
DIM 'A'	TOTAL No. OF CONTACT POSITIONS - 2
DIM 'B'	TOTAL No. OF CONTACT POSITIONS + 5
DIM 'C'	TOTAL No. OF CONTACT POSITIONS + 10
DIM 'D'	TOTAL No. OF CONTACT POSITIONS + 0.59
EXAMPLE: CONNECTOR WITH 20 CONTACT POSITIONS, M80-4582098	
DIM 'A' = 18.00mm, DIM 'B' = 25.00mm, DIM 'C' = 30.00mm	



ORDER CODE:  
**M80-458XX98**

TOTAL No. OF CONTACT POSITIONS:  
 04, 06, 08, 10, 12, 14, 20,  
 26, 28, 34, 42, 50

PLEASE CONTACT  
 datamate@harwin.com  
 FOR CURRENT AVAILABILITY

MSP	5	23.06.17	13406
NAME	ISS.	DATE	C/NOTE
APPROVED: M.PERREN			
CHECKED: M.PLESTED			
DRAWN: B. M. KENT			
CUSTOMER REF.:			
ASSEMBLY DRG:			



www.harwin.com  
 technical@harwin.com

THIS DRAWING AND ANY INFORMATION OR DESCRIPTIVE MATTER SET OUT HEREON ARE CONFIDENTIAL AND COPYRIGHT PROPERTY OF THE HARWIN GROUP AND MUST NOT BE DISCLOSED, LOANED, COPIED OR USED FOR MANUFACTURING, TENDERING OR FOR ANY OTHER PURPOSE WITHOUT THEIR WRITTEN PERMISSION.

**TOLERANCES**  
 X. = ±1mm  
 X.X = ±0.50mm  
 X.XX = ±0.10mm  
 X.XXX = ±0.01mm  
 ANGLES = ±5°  
 UNLESS STATED

**MATERIAL:**  
 SEE ABOVE

**FINISH:**

**S/AREA:** mm<sup>2</sup>

**TITLE:** DATAMATE TRIO-TEK FEMALE CRIMP HOUSING WITH GUIDE AND BOARD MOUNT

**DRAWING NUMBER:**  
**M80-458XX98**

SHT 2 OF 2