



P-DUKE POWER

LCD20W Series

DC-DC Converter
Up to 20 Watts

3
YEARS
WARRANTY

ROHS
COMPLIANT

REACH
COMPLIANT



Automation



Datacom



IPC



Industry



Measurement



Telecom



Automobile



Boat



Charger



Medical



PV



Railway

UL US CB CE

1600
VDC
Isolation
Voltage

4 : 1
Wide
Input
Range

6
sided
Shielding

Internal
EN55032
Class
Filter **A**

LOW
Standby
Power

NO
Min. Load
Required

REMOTE
ON
OFF

OCP

OVP

SCP

UVP

PART NUMBER STRUCTURE

LCD20	48	S	05	W	V	-	M3	A	HC
Series Name	Input Voltage (VDC)	Output Quantity	Output Voltage (VDC)	Input Range	-10% ~ +20% Vout Adjustability		Operating Temp. Options	Remote ON/OFF & Trim Options	Assembly Options
	24:9~36 48:18~75	S:Single D:Dual	3P3:3.3 05:5 12:12 15:15 24:24 12:±12 15:±15 24:±24	4:1	□: None V: -10~+20% (Only for 5Vout)		□: Standard -40~+101°C With derating M3: M3 Version -55~+101°C With derating	□: Negative logic A: Positive logic B: Without Ctrl pin C: Negative logic without Trim pin D: Without Ctrl & Trim pin E: Positive logic without Trim pin	□: None HC: Heat-sink with Clamp

TECHNICAL SPECIFICATION All specifications are typical at nominal input, full load and 25°C unless otherwise noted

Model Number	Input Range	Output Voltage	Output Current @ Full Load	Input Current @ No Load	Efficiency	Maximum Capacitor Load
	VDC	VDC	mA	mA	%	μF
LCD20-24S3P3W	9 ~ 36	3.3	4500	10	89	7000
LCD20-24S05W	9 ~ 36	5	4000	10	89	5000
LCD20-24S05WV	9 ~ 36	5	4000	10	88	5000
LCD20-24S12W	9 ~ 36	12	1670	6	89	850
LCD20-24S15W	9 ~ 36	15	1330	6	89	700
LCD20-24S24W	9 ~ 36	24	833	10	91	220
LCD20-24D12W	9 ~ 36	±12	±833	6	89	±500
LCD20-24D15W	9 ~ 36	±15	±667	6	90	±350
LCD20-24D24W	9 ~ 36	±24	±417	12	91	±100
LCD20-48S3P3W	18 ~ 75	3.3	4500	10	90	7000
LCD20-48S05W	18 ~ 75	5	4000	10	90	5000
LCD20-48S05WV	18 ~ 75	5	4000	10	89	5000
LCD20-48S12W	18 ~ 75	12	1670	4	89	850
LCD20-48S15W	18 ~ 75	15	1330	4	90	700
LCD20-48S24W	18 ~ 75	24	833	8	91	220
LCD20-48D12W	18 ~ 75	±12	±833	4	89	±500
LCD20-48D15W	18 ~ 75	±15	±667	4	90	±350
LCD20-48D24W	18 ~ 75	±24	±417	10	91	±100

INPUT SPECIFICATIONS						
Parameter	Conditions		Min.	Typ.	Max.	Unit
Operating input voltage range		24Vin(nom) 48Vin(nom)	9 18	24 48	36 75	VDC
Start up voltage		24Vin(nom) 48Vin(nom)			9 18	VDC
Shutdown voltage		24Vin(nom) 48Vin(nom)	7.5 15.5	8 16	8.8 17.5	VDC
Start up time	Constant resistive load	Power up Remote ON/OFF			30 30	ms
Input surge voltage	1 second, max.	24Vin(nom) 48Vin(nom)			50 100	VDC
Input filter					Pi type	
Remote ON/OFF	Referred to -Vin pin	Positive logic DC-DC ON (Option) DC-DC OFF Negative logic DC-DC ON (Standard) DC-DC OFF Input current of Ctrl pin Remote off input current	-0.5	2.0	Open or 3 ~ 15VDC Short or 0 ~ 1.2VDC Short or 0 ~ 1.2VDC Open or 3 ~ 15VDC 1.0	mA mA

OUTPUT SPECIFICATIONS

Parameter	Conditions		Min.	Typ.	Max.	Unit
Voltage accuracy			-1.0		+1.0	%
Line regulation	Low Line to High Line at Full Load	Single Dual	-0.2 -0.5		+0.2 +0.5	%
Load regulation	No Load to Full Load	Single Dual	-0.2 -1.0		+0.2 +1.0	%
	10% Load to 90% Load	Single Dual	-0.1 -0.8		+0.1 +0.8	
Cross regulation	Asymmetrical load 25%/100% FL	Dual	-5.0		+5.0	%
Voltage adjustability	Single output	<input type="checkbox"/> <input type="checkbox"/> S05WV 24Vout Others	-10 -10 -10		+20 +20 +10	%
Ripple and noise	Measured by 20MHz bandwidth					
	With a 1 μ F M/C X7R and a 10 μ F T/C	Single 3.3Vout, 5Vout 12Vout, 15Vout		75 75		mVp-p
	With 2 pcs of 6.8 μ F/50V X7R MLCC	24Vout		75		
	With a 1 μ F M/C X7R and a 10 μ F T/C for each output	Dual 12Vout, 15Vout		100		
	With a 4.7 μ F/50V X7R MLCC for each output	24Vout		100		
Temperature coefficient			-0.02		+0.02	%/°C
Transient response recovery time	25% load step change			250		μ s
Over voltage protection		3.3Vout 5Vout 12Vout 15Vout 24Vout <input type="checkbox"/> <input type="checkbox"/> S05WV	3.7 5.6 13.5 16.8 29.1 6.3		5.4 7.0 19.6 20.5 32.5 7.4	VDC
Over load protection	% of lout rated; Hiccup mode			150		%
Short circuit protection						Continuous, automatic recovery

GENERAL SPECIFICATIONS

Parameter	Conditions		Min.	Typ.	Max.	Unit
Isolation voltage	1 minute	Input to Output Input(Output) to Case	1600 1000			VDC
Isolation resistance	500VDC		1			G Ω
Isolation capacitance					1500	pF
Switching frequency		3.3Vout, 5Vout Others	248 297	275 330	303 363	kHz
Safety approvals	IEC /EN /UL 62368-1					UL:E193009 CB:UL(Demko)
Case material						Nickel-coated copper
Base material						FR4 PCB
Potting material						Silicone (UL94 V-0)
Weight						15g (0.53oz)
MTBF	MIL-HDBK-217F, Full load					1.469 x 10 ⁶ hrs

ENVIRONMENTAL SPECIFICATIONS

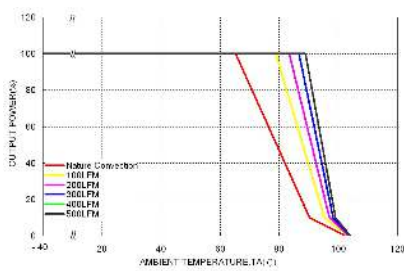
Parameter	Conditions		Min.	Typ.	Max.	Unit
Operating ambient temperature	Standard M3 Version	With derating	-40		+101	°C
		With derating	-55		+101	
Maximum case temperature					105	°C
Storage temperature range			-55		+125	°C
Thermal impedance		Without heat-sink		17.6		°C/W
		With heat-sink		14.8		
Thermal shock						MIL-STD-810F
Vibration						MIL-STD-810F
Relative humidity						5% to 95% RH

EMC SPECIFICATIONS

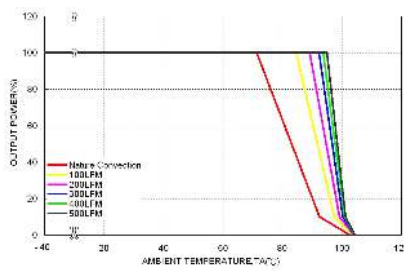
Parameter	Conditions		Level
EMI	EN55032	Without external components	Class A
		With external components	Class B
EMS	EN55024		
ESD	EN61000-4-2	Air ± 8kV and Contact ± 6kV	Perf. Criteria A
Radiated immunity	EN61000-4-3	10 V/m	Perf. Criteria A
Fast transient	EN61000-4-4	± 2kV	Perf. Criteria A
		An external input filter capacitor (Nippon chemi-con KY series, 220µF/100V)	
Surge	EN61000-4-5	± 2kV	Perf. Criteria A
		An external input filter capacitor (Nippon chemi-con KY series, 220µF/100V)	
Conducted immunity	EN61000-4-6	10 Vr.m.s	Perf. Criteria A
Power frequency magnetic field	EN61000-4-8	100A/m continuous; 1000A/m 1 second	Perf. Criteria A

CAUTION: This power module is not internally fused. An input line fuse must always be used.

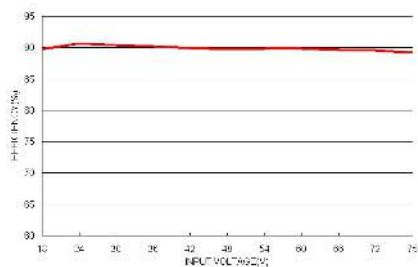
CHARACTERISTIC CURVE



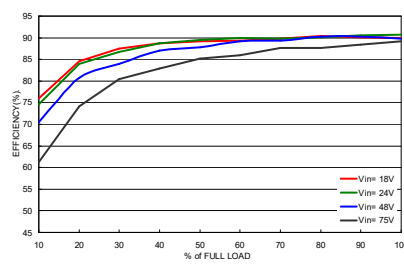
LCD20-48S05W Derating Curve



LCD20-48S05W Derating Curve With Heat-sink



LCD20-48S05W Efficiency vs. Input Voltage



LCD20-48S05W Efficiency vs. Output Load

FUSE CONSIDERATION

This power module is not internally fused. An input line fuse must always be used.

This encapsulated power module can be used in a wide variety of applications, ranging from simple stand-alone operation to an integrated part of sophisticated power architecture.

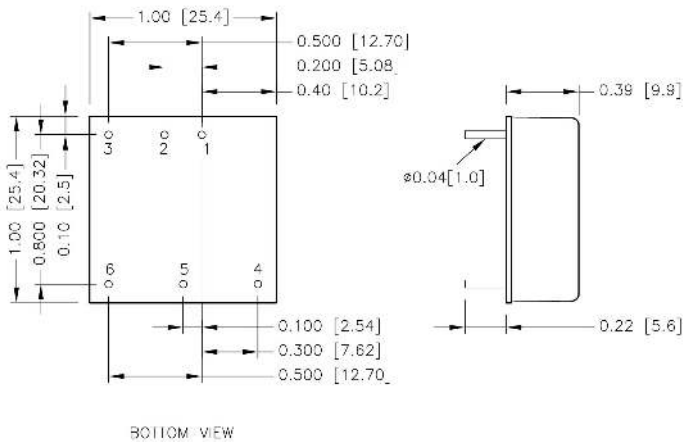
To maximum flexibility, internal fusing is not included; however, to achieve maximum safety and system protection, always use an input line fuse.

The input line fuse suggest as below :

Model	Fuse Rating (A)	Fuse Type
LCD20-24S□□W、LCD20-24D□□W	4	Slow-Blow
LCD20-48S□□W、LCD20-48D□□W	2	Slow-Blow

The table based on the information provided in this data sheet on inrush energy and maximum DC input current at low Vin.

MECHANICAL DRAWING



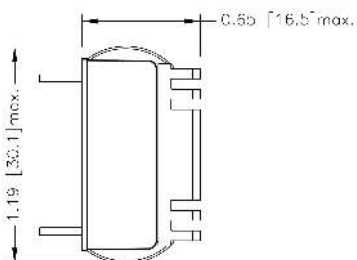
PIN CONNECTION

PIN	SINGLE	DUAL
1	+Vin	+Vin
2	-Vin	-Vin
3	Ctrl	Ctrl
4	+Vout	+Vout
5	Trim	Common
6	-Vout	-Vout

- All dimensions in inch [mm]
- Tolerance : $x.xx \pm 0.02$ [$x.x \pm 0.5$]
 $x.xxx \pm 0.01$ [$x.xx \pm 0.25$]
- Pin pitch tolerance ± 0.01 [0.25]
- Pin dimension tolerance ± 0.004 [0.10]

HEAT-SINK OPTIONS

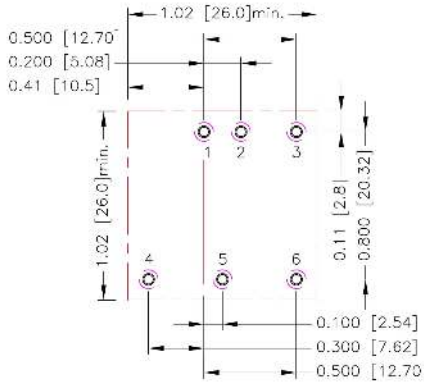
-HC (Heat-sink with clamps)



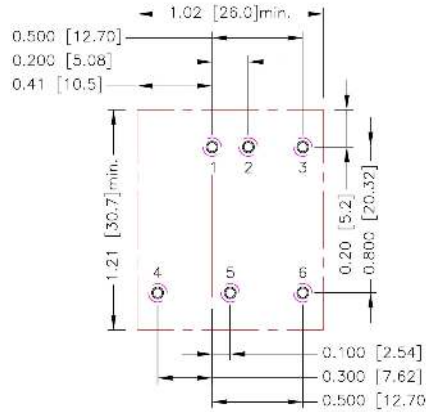
* All dimensions in inch [mm]

RECOMMENDED PAD LAYOUT

Standard



-HC

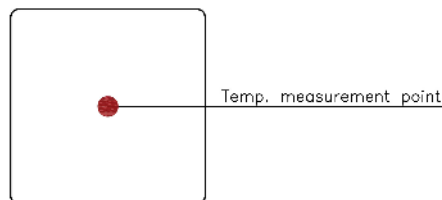


All dimensions in inch[mm]
 Pad size(lead free recommended)
 Through hole 1.2.3.4.5.6: $\Phi 0.051[1.30]$
 Top view pad 1.2.3.4.5.6: $\Phi 0.064[1.63]$
 Bottom view pad 1.2.3.4.5.6: $\Phi 0.102[2.60]$

THERMAL CONSIDERATIONS

The power module operates in a variety of thermal environments. However, sufficient cooling should be provided to help ensure reliable operation of the unit. Heat is removed by conduction, convection, and radiation to the surrounding Environment. Proper cooling can be verified by measuring the point as the figure below. The temperature at this location should not exceed "Maximum case temperature". When Operating, adequate cooling must be provided to maintain the test point temperature at or below "Maximum case temperature". You can limit this Temperature to a lower value for extremely high reliability.

- Thermal test condition with vertical direction by natural convection (20LFM).



TOP VIEW

OUTPUT VOLTAGE ADJUSTMENT

Output voltage set point adjustment allows the user to increase or decrease the output voltage set point of the module. This is accomplished by connecting an external resistor between the Trim pin and either the +Output or -Output pins. With an external resistor between the Trim and -Output pin, the output voltage set point increases. With an external resistor between the Trim and +Output pin, the output voltage set point decreases. The external Trim resistor needs to be at least 1/16W of rated power.

Trim Up Equation

$$R_U = \left[\frac{G \times L}{(V_{o,up} - L - K)} - H \right] \Omega$$

Trim Down Equation

$$R_D = \left[\frac{(V_{o,down} - L) \times G}{(V_o - V_{o,down})} - H \right] \Omega$$

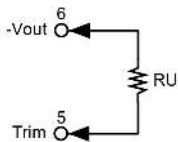
Trim constants

Module	G	H	K	L
LCD20-□□S3P3W	5110	2050	0.8	2.5
LCD20-□□S05W	5110	2050	2.5	2.5
LCD20-□□S05WV	5110	2050	2.5	2.5
LCD20-□□S12W	10000	5110	9.5	2.5
LCD20-□□S15W	10000	5110	12.5	2.5
LCD20-□□S24W	56000	13000	21.5	2.5

EXTERNAL OUTPUT TRIMMING

Output can be externally trimmed by using the method shown below.

Trim-up



□□S3P3W

ΔV (%)	1	2	3	4	5	6	7	8	9	10
Vout (V)	3.333	3.366	3.399	3.432	3.465	3.498	3.531	3.564	3.597	3.630
RU (kΩ)	385.071	191.511	126.990	94.730	75.374	62.470	53.253	46.340	40.963	36.662

□□S05W

ΔV (%)	1	2	3	4	5	6	7	8	9	10
Vout (V)	5.050	5.100	5.150	5.200	5.250	5.300	5.350	5.400	5.450	5.500
RU (kΩ)	253.450	125.700	83.117	61.825	49.050	40.533	34.450	29.888	26.339	23.500

□□S05WV

ΔV (%)	1	2	3	4	5	6	7	8	9	10
Vout (V)	5.050	5.100	5.150	5.200	5.250	5.300	5.350	5.400	5.450	5.500
RU (kΩ)	253.450	125.700	83.117	61.825	49.050	40.533	34.450	29.888	26.339	23.500

ΔV (%)	11	12	13	14	15	16	17	18	19	20
Vout (V)	5.550	5.600	5.650	5.700	5.750	5.800	5.850	5.900	5.950	6.000
RU (kΩ)	21.177	19.242	17.604	16.200	14.983	13.919	12.979	12.144	11.397	10.725

□□S12W

ΔV (%)	1	2	3	4	5	6	7	8	9	10
Vout (V)	12.120	12.240	12.360	12.480	12.600	12.720	12.840	12.960	13.080	13.200
RU (kΩ)	203.223	99.057	64.334	46.973	36.557	29.612	24.652	20.932	18.038	15.723

□□S15W

ΔV (%)	1	2	3	4	5	6	7	8	9	10
Vout (V)	15.150	15.300	15.450	15.600	15.750	15.900	16.050	16.200	16.350	16.500
RU (kΩ)	161.557	78.223	50.446	36.557	28.223	22.668	18.700	15.723	13.409	11.557

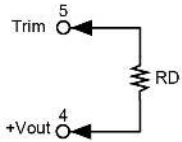
□□S24W

ΔV (%)	1	2	3	4	5	6	7	8	9	10
Vout (V)	24.240	24.480	24.720	24.960	25.200	25.440	25.680	25.920	26.160	26.400
RU (kΩ)	570.333	278.667	181.444	132.833	103.667	84.222	70.333	59.917	51.815	45.333

ΔV (%)	11	12	13	14	15	16	17	18	19	20
Vout (V)	26.640	26.880	27.120	27.360	27.600	27.840	28.080	28.320	28.560	28.800
RU (kΩ)	40.030	35.611	31.872	28.667	25.889	23.458	21.314	19.407	17.702	16.167

OUTPUT VOLTAGE ADJUSTMENT(CONTINUED)

Trim-down



□□S3P3W

ΔV (%)	1	2	3	4	5	6	7	8	9	10
Vout (V)	3.267	3.234	3.201	3.168	3.135	3.102	3.069	3.036	3.003	2.970
RD (k Ω)	116.719	54.779	34.133	23.810	17.616	13.486	10.537	8.325	6.604	5.228

□□S05W

ΔV (%)	1	2	3	4	5	6	7	8	9	10
Vout (V)	4.950	4.900	4.850	4.800	4.750	4.700	4.650	4.600	4.550	4.500
RD (k Ω)	248.340	120.590	78.007	56.715	43.940	35.423	29.340	24.778	21.229	18.390

□□S05WV

ΔV (%)	1	2	3	4	5	6	7	8	9	10
Vout (V)	4.950	4.900	4.850	4.800	4.750	4.700	4.650	4.600	4.550	4.500
RD (k Ω)	248.340	120.590	78.007	56.715	43.940	35.423	29.340	24.778	21.229	18.390

□□S12W

ΔV (%)	1	2	3	4	5	6	7	8	9	10
Vout (V)	11.880	11.760	11.640	11.520	11.400	11.280	11.160	11.040	10.920	10.800
RD (k Ω)	776.557	380.723	248.779	182.807	143.223	116.834	97.985	83.848	72.853	64.057

□□S15W

ΔV (%)	1	2	3	4	5	6	7	8	9	10
Vout (V)	14.850	14.700	14.550	14.400	14.250	14.100	13.950	13.800	13.650	13.500
RD (k Ω)	818.223	401.557	262.668	193.223	151.557	123.779	103.938	89.057	77.483	68.223

□□S24W

ΔV (%)	1	2	3	4	5	6	7	8	9	10
Vout (V)	23.760	23.520	23.280	23.040	22.800	22.560	22.320	22.080	21.840	21.600
RD (k Ω)	4947.667	2439.333	1603.222	1185.167	934.333	767.111	647.667	558.083	488.407	432.667